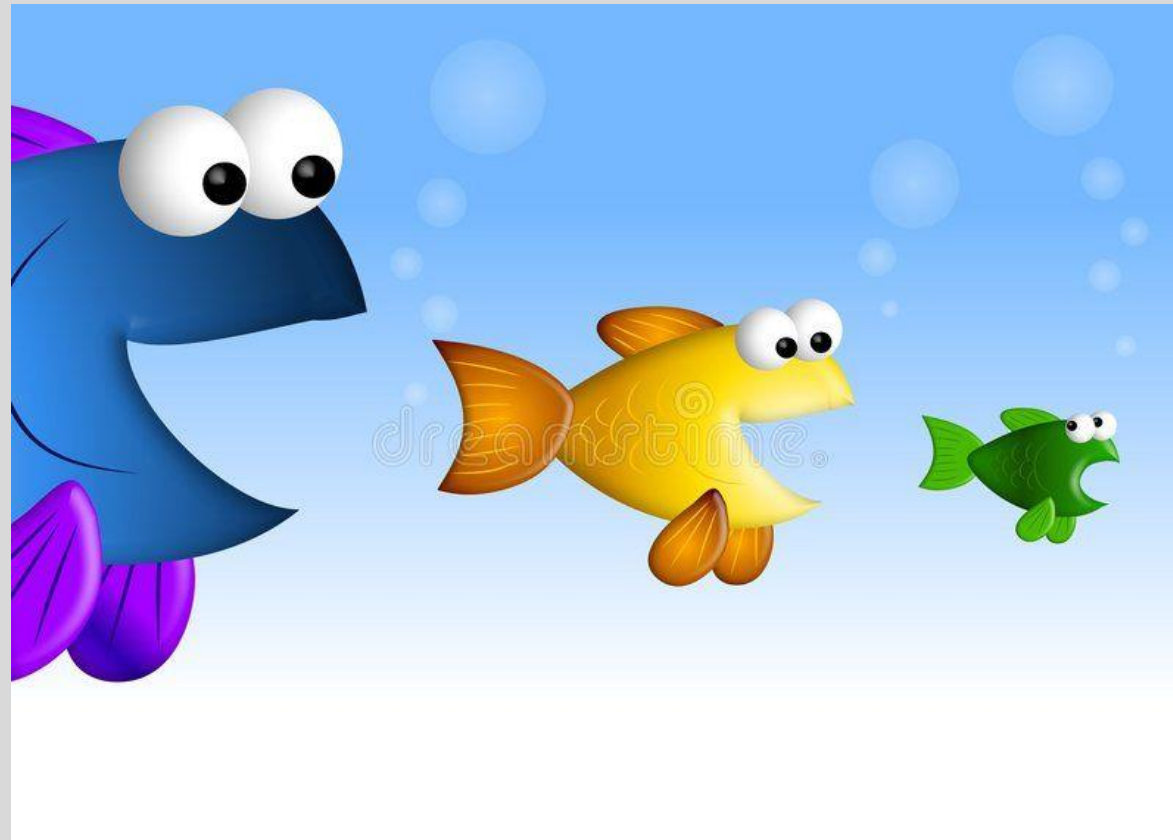


THE FACTOR OF SIZE



THE LARGEST MEMBER-STATES

(population over 20 million)

EU TOTAL POPULATION: 446.8 million

MEMBER-STATE	POPULATION (millions)	% TOTAL EU POPULATION
GERMANY	84.4	18.8
FRANCE	68.1	15.1
ITALY	58.9	13.1
SPAIN	48.1	10.7
POLAND	36.7	8.2
TOTAL	296.2	65.9

Source: Eurostat figures for 1 Jan 2023

THE MEDIUM-SIZED STATES

(population of 10-20 million)

MEMBER-STATE	POPULATION (millions)	% TOTAL EU POPULATION
ROMANIA	19.0	4.2
NETHERLANDS	17.8	4.0
BELGIUM	11.7	2.6
CZECH REPUBLIC	10.8	2.4
SWEDEN	10.5	2.3
PORTUGAL	10.5	2.3
GREECE	10.4	2.1
TOTAL	90.7	19.9

Source: Eurostat figures for 1 Jan 2023

THE SMALL MEMBER-STATES

(population below 10 and above 5 million)

MEMBER-STATE	POPULATION (millions)	% TOTAL EU POPULATION
HUNGARY	9.6	2.1
AUSTRIA	9.1	2.0
BULGARIA	6.4	1.4
DENMARK	5.9	1.3
FINLAND	5.6	1.2
SLOVAKIA	5.4	1.2
IRELAND	5.2	1.2
TOTAL	47.2	10.4

Source: Eurostat figures for 1 Jan 2023

VERY SMALL MEMBER-STATES

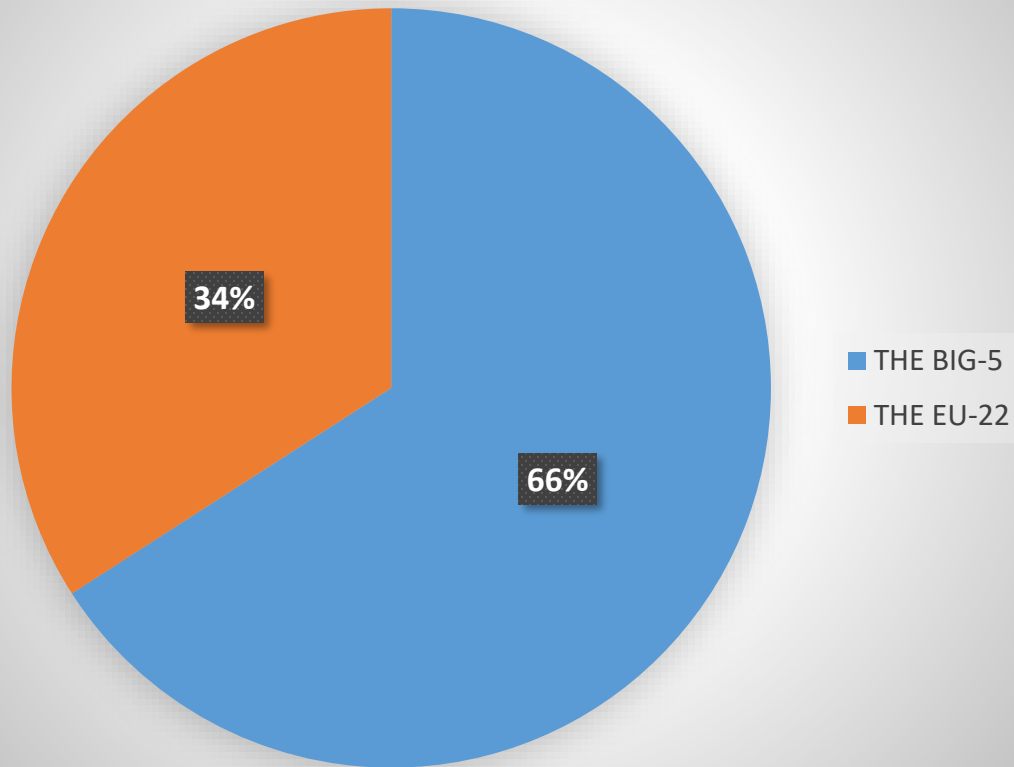
(population below 4 million)

MEMBER-STATE	POPULATION (millions)	% TOTAL EU POPULATION
CROATIA	3.8	0.8
LITHUANIA	2.9	0.6
SLOVENIA	2.1	0.5
LATVIA	1.9	0.4
ESTONIA	1.4	0.3
CYPRUS	0.9	0.2
LUXEMBOURG	0.7	0.2
MALTA	0.5	0.1
TOTAL	14.2	3.1

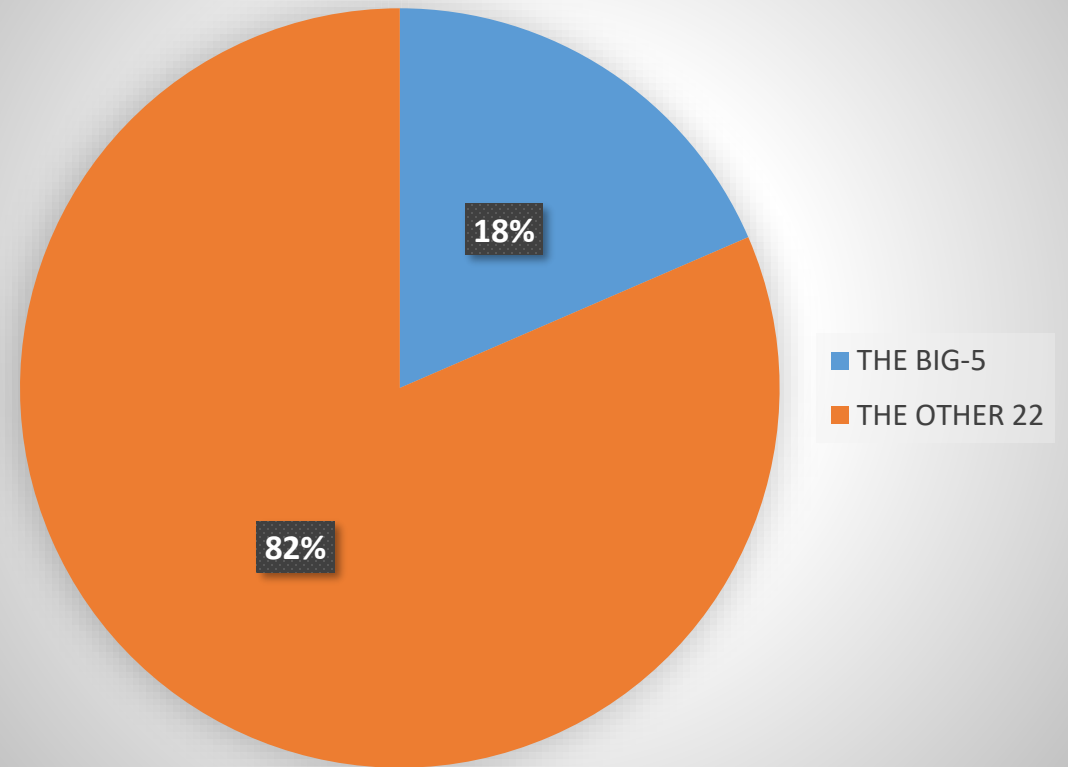
Source: Eurostat data for 1 Jan 2023

THE BIG-5 OUTNUMBERED

% OF EU POPULATION



% OF MEMBER-STATES



VOTING IN THE COUNCIL OF THE EU

- Unanimity
- Simple majority (14 states)
- Qualified majority: 55% of member-states representing at least 65% of the EU population

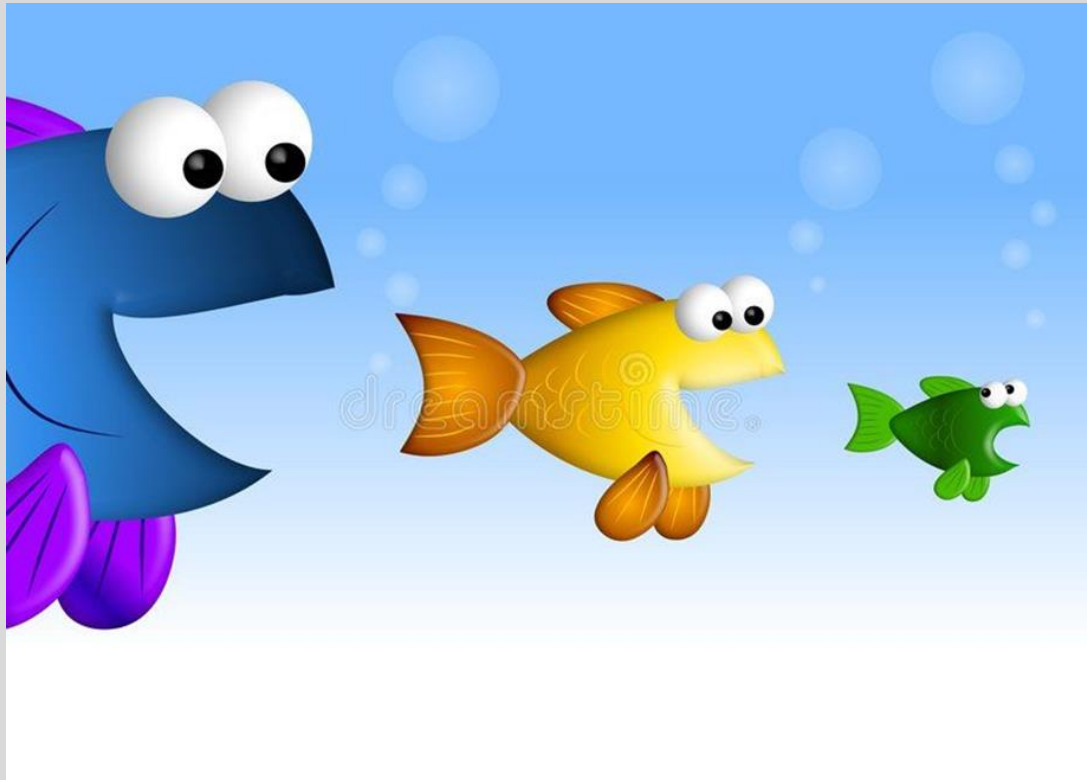
QUALIFIED MAJORITY VOTING

55% member-states = 15 states

15 smallest member-states = simple majority of states but 13.6% total population

Germany + France = 33.9% means to have a qualified majority without *both*, need almost all the other member-states

HOW MIGHT SIZE AFFECT EU POLICY?



- Affects expectations of influence – bigger states expect to play a role and to be listened to
- Bigger states more likely to have a role on global stage which doesn't depend on EU
- When bigger states disagree, have more impact
- Size may make states more sensitive about **sovereignty**