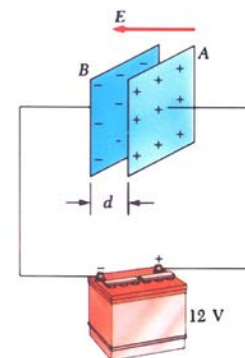
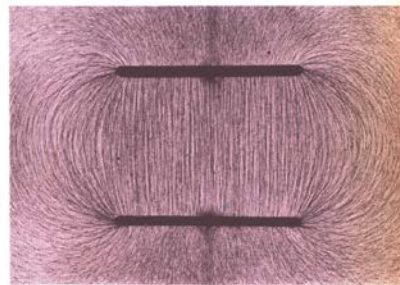
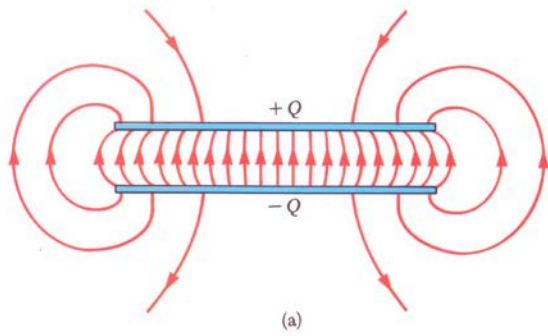
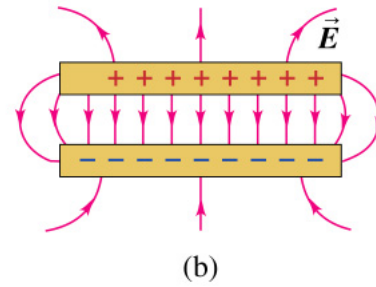
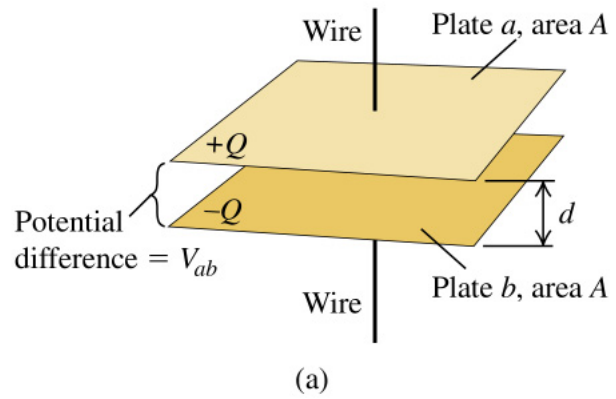
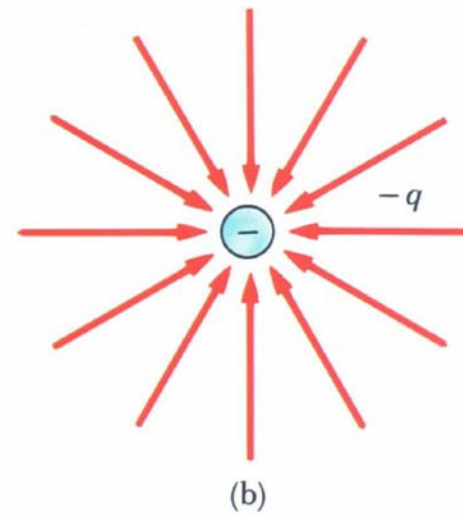
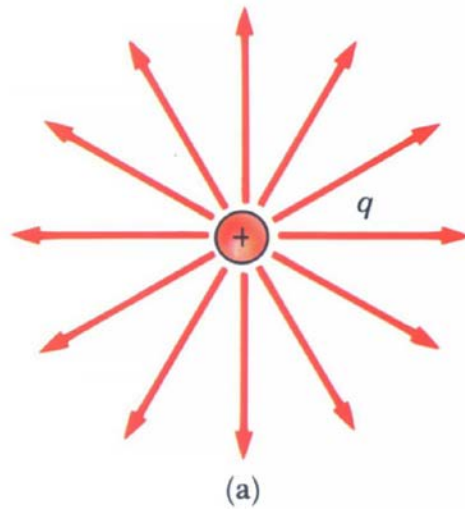


Επίπεδος Πυκνωτής

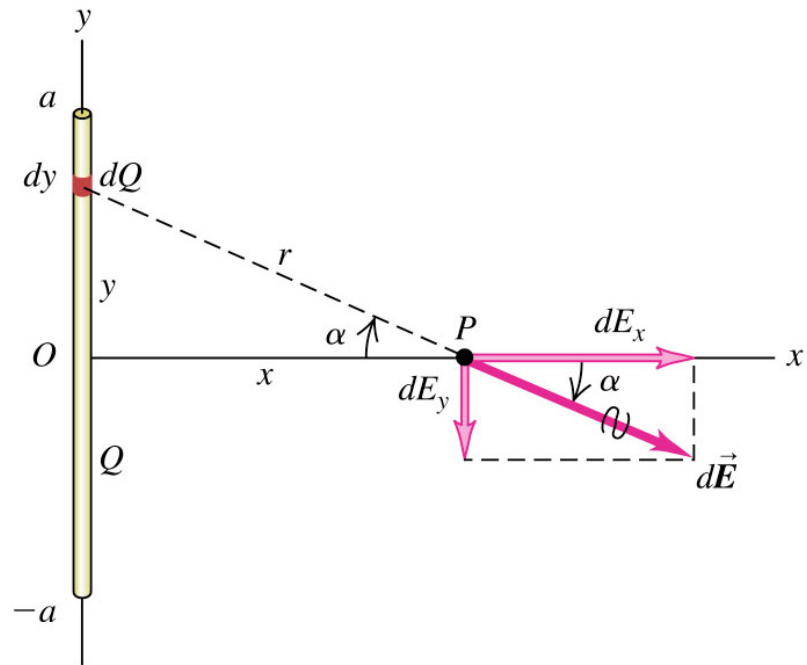
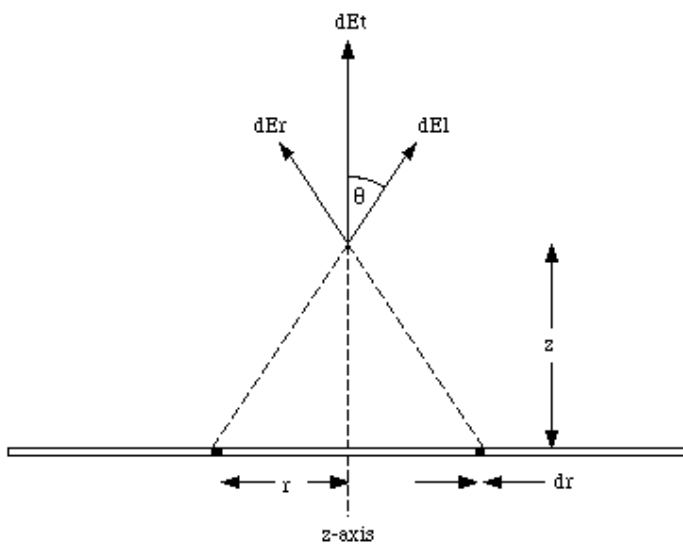




Δυναμικές γραμμές



Υπολογισμός Έντασης Ηλεκτρικού Πεδίου.

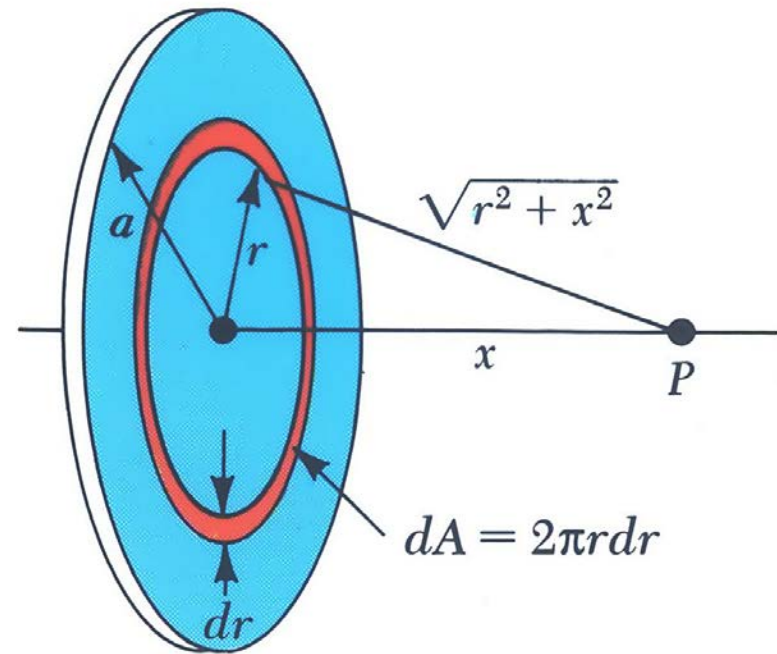
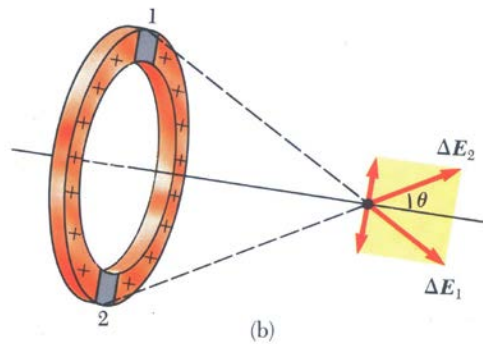
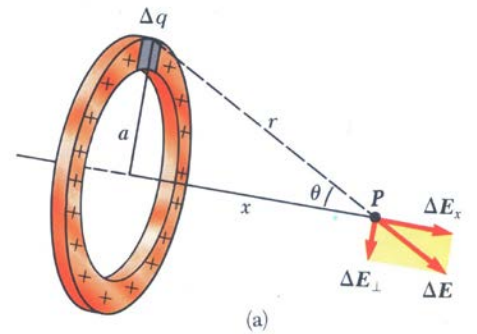


$$d\vec{E} = \frac{1}{4\pi\epsilon_0} \frac{dq}{r^2} \hat{r} = \frac{1}{4\pi\epsilon_0} \frac{\lambda dx}{r^2} \hat{r}$$

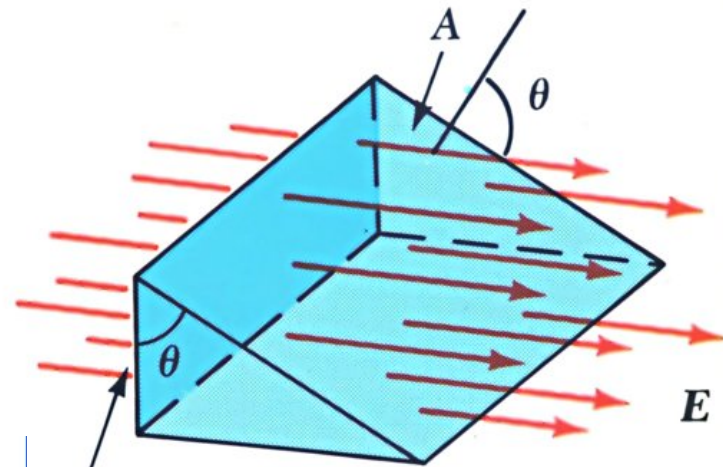
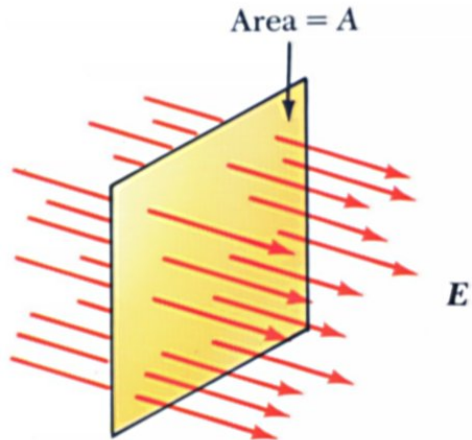
$$dE_x = dE \cos \theta = \frac{1}{4\pi\epsilon_0} \frac{\lambda dx}{(x^2 + a^2)} \frac{x}{(x^2 + a^2)^{1/2}}$$

$$E_x = \frac{1}{4\pi\epsilon_0} \int \frac{\lambda x dx}{(x^2 + a^2)^{3/2}} = \frac{1}{4\pi\epsilon_0} \int_{-l}^{+l} \frac{\lambda x dx}{(x^2 + a^2)^{3/2}}$$

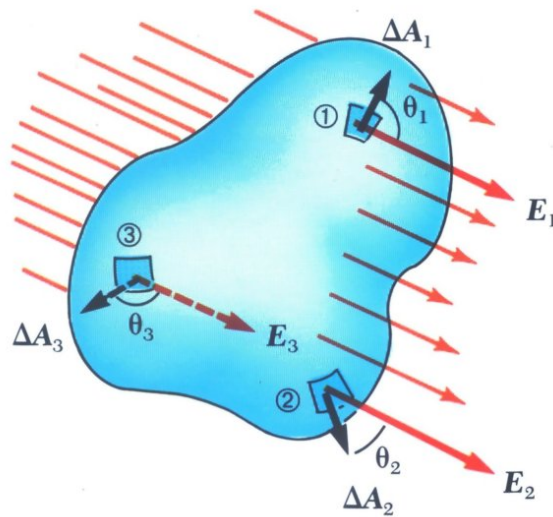
Υπολογισμός Έντασης, Δακτυλίδι δίσκος



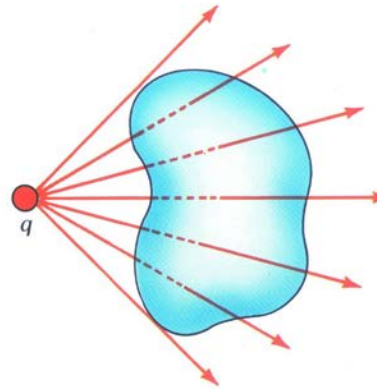
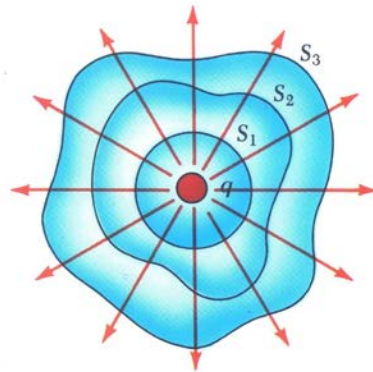
Ηλεκτρική Ροή



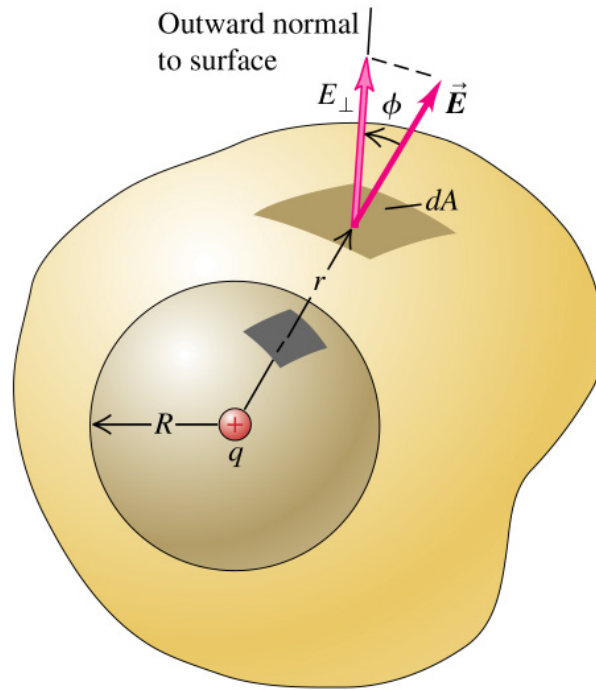
$$A' = A \cos \theta$$



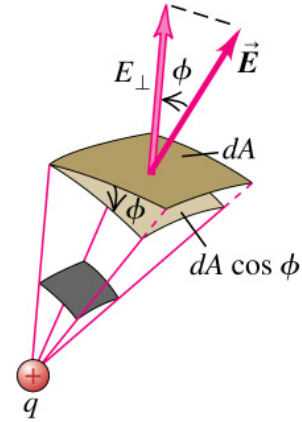
Κλειστή επιφάνεια



Επιφάνεια Gauss



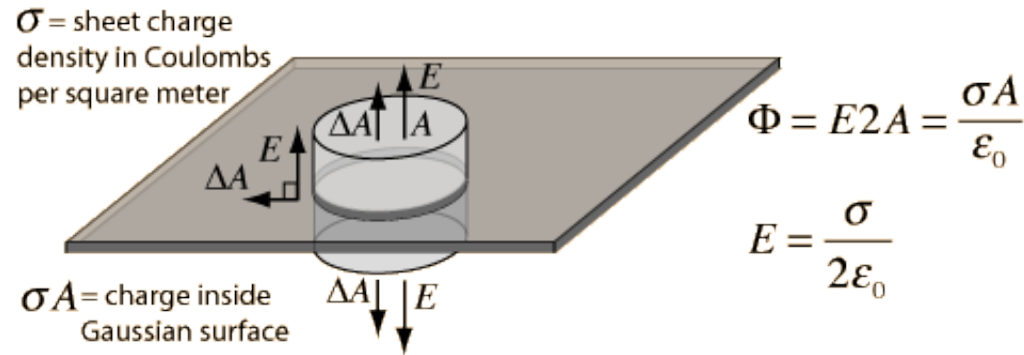
(a)



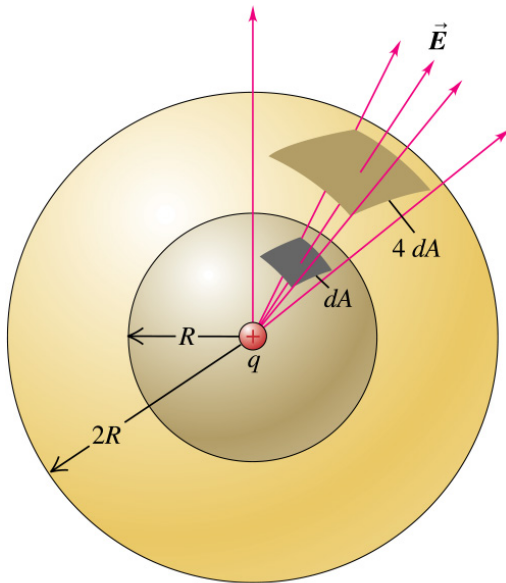
(b)

Υπολογισμοί με επιφάνεια Gauss

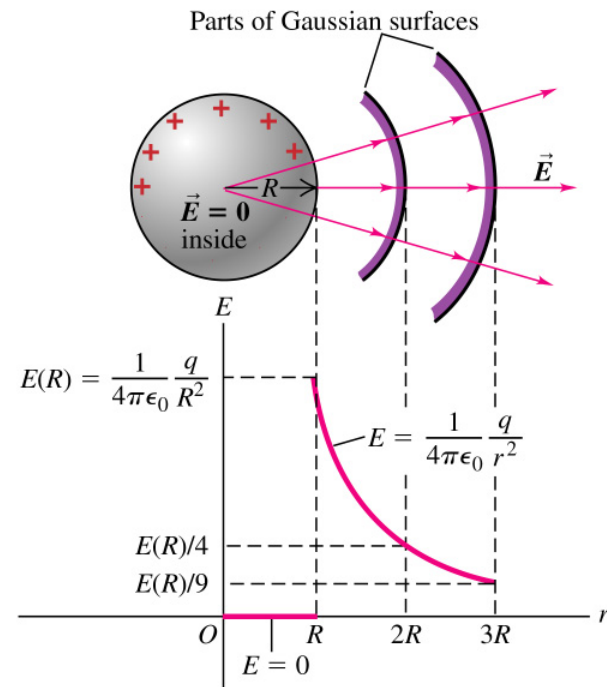
Επιφανειακή κατανομή



Σφαιρική κατανομή

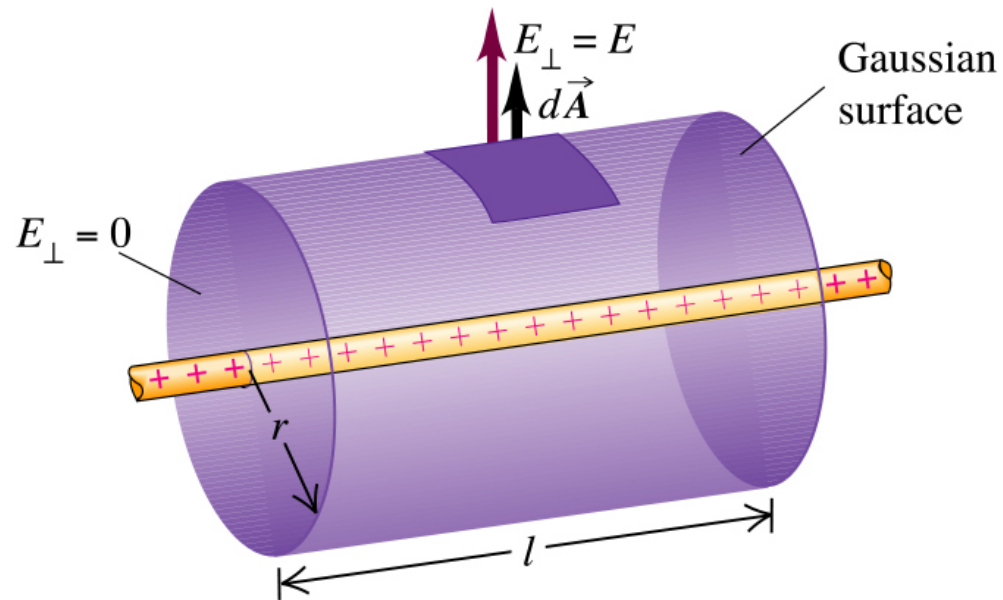


Copyright © 2004 Pearson Education, Inc., publishing as Addison Wesley.

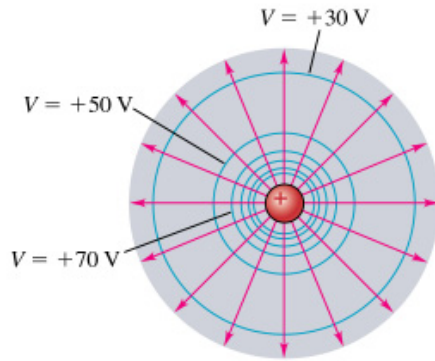


Copyright © 2004 Pearson Education, Inc., publishing as Addison Wesley.

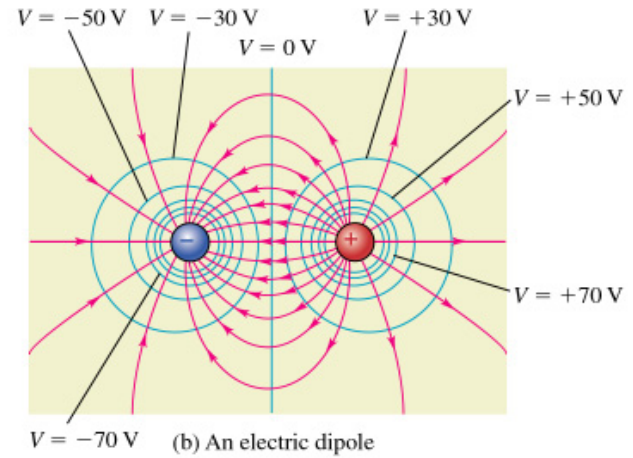
Γραμμική κατανομή



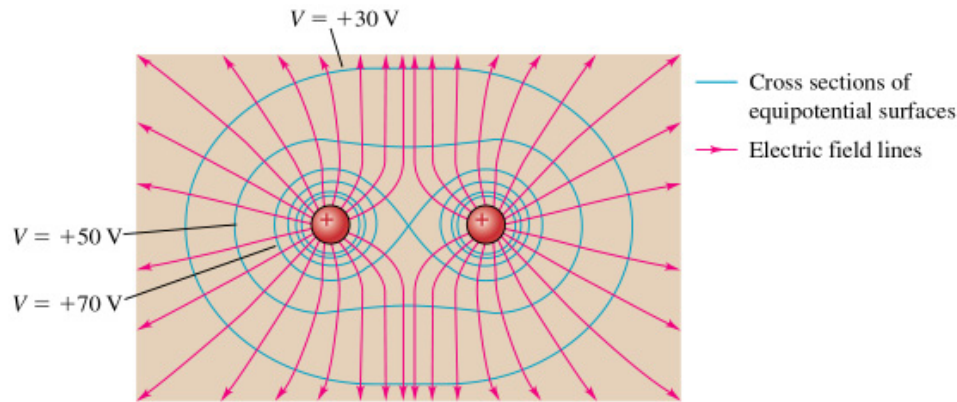
Ισοδυναμικές Γραμμές



(a) A single positive charge

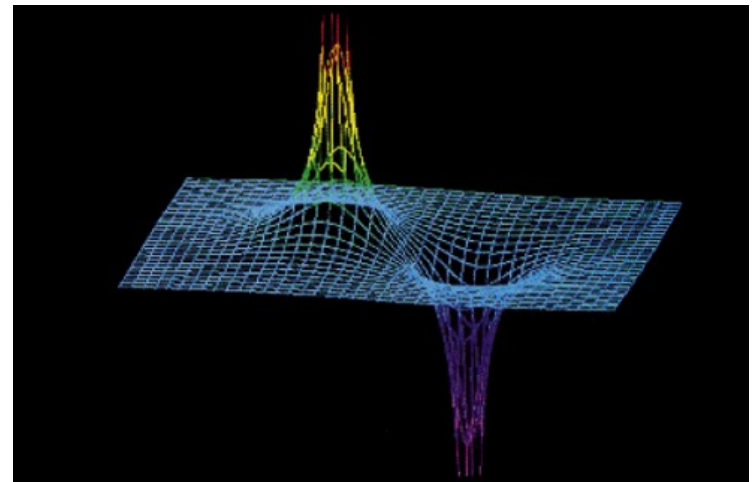
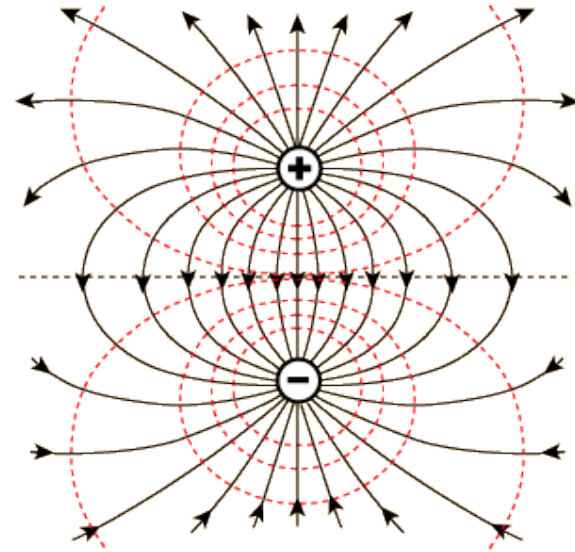
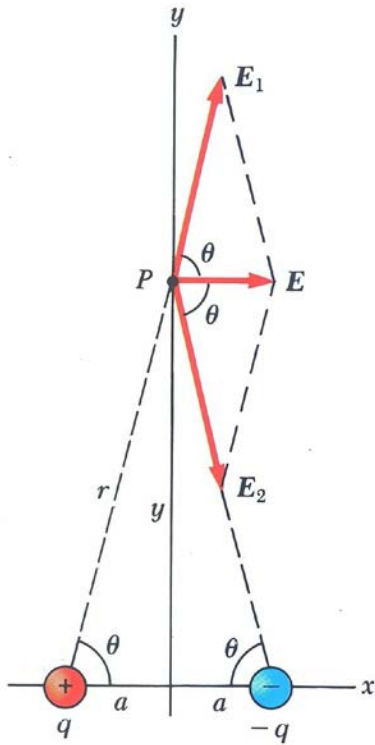


(b) An electric dipole



(c) Two equal positive charges

Ηλεκτρικό Δίπολο



Δυναμική Ενέργεια Ηλ. Πεδίου.

