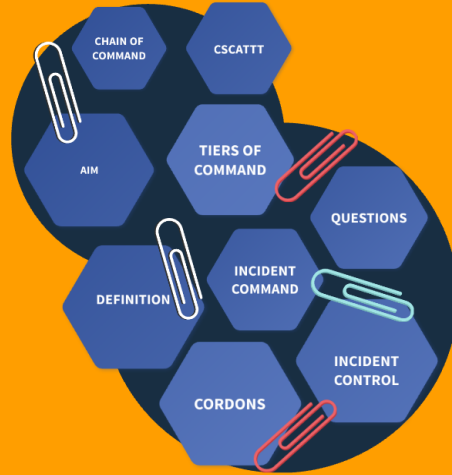


### Command - Control in Medical Response



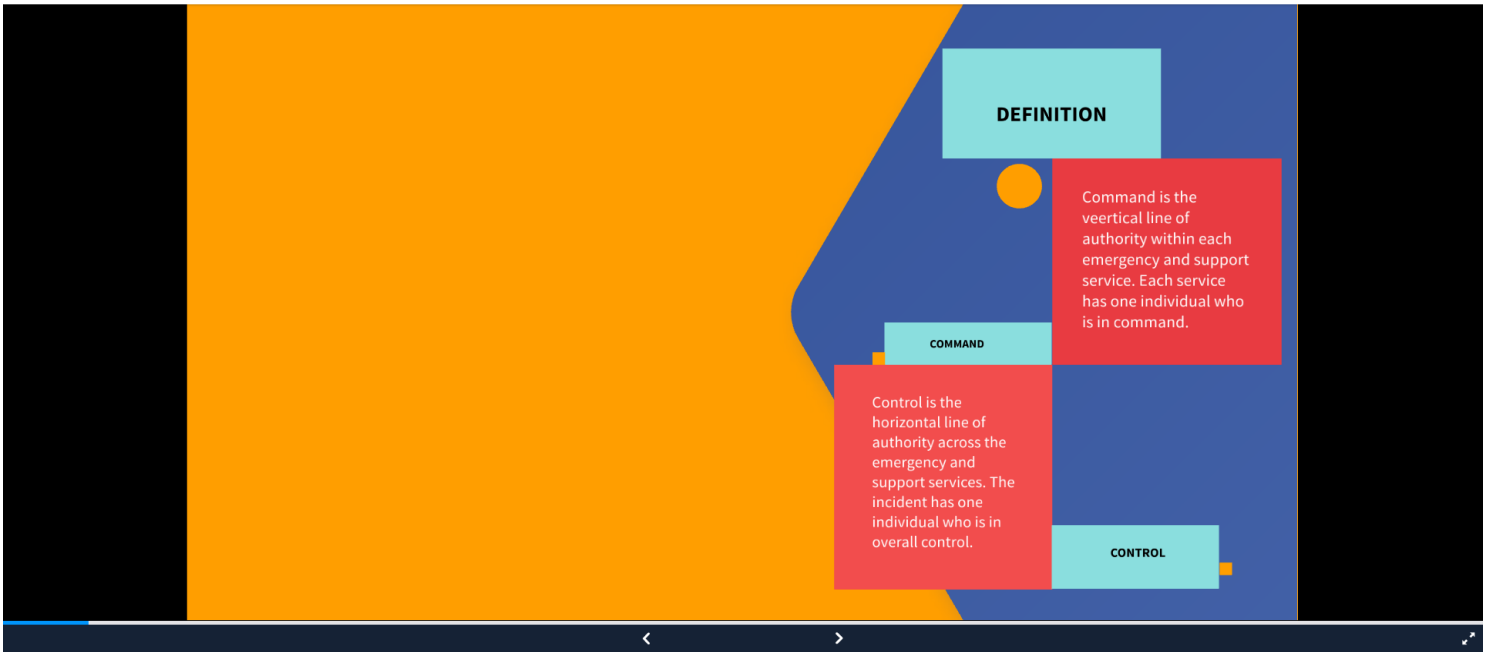
Athanasios Kalogeropoulos  
MD, MPH, MHA, PHEC, PhDc  
Orthopedic Surgery- Traumatology  
Bern, Switzerland, 23.11.2020

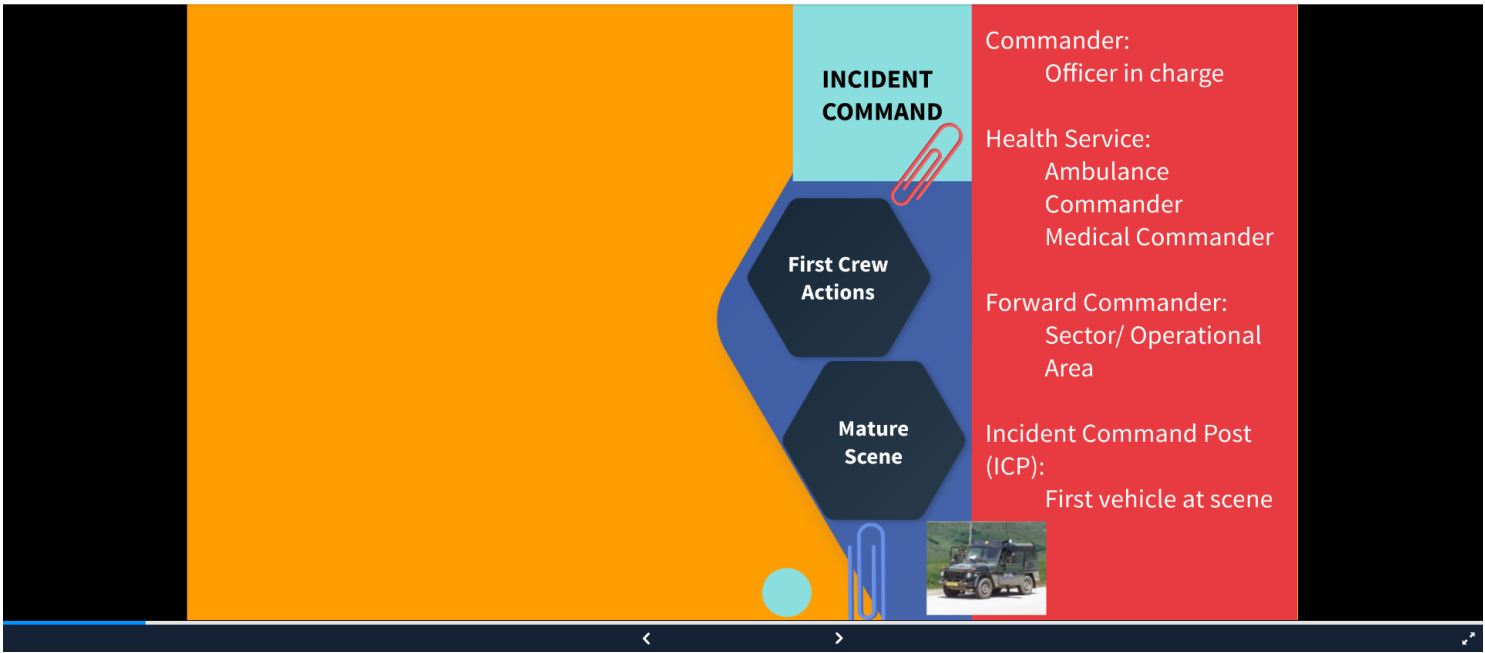


## Aim

- How are command & control defined?
- Who has overall control at the incident?
- What is the purpose of the cordons at the incident?
- What are the tiers of command at the incident?







First Crew Actions

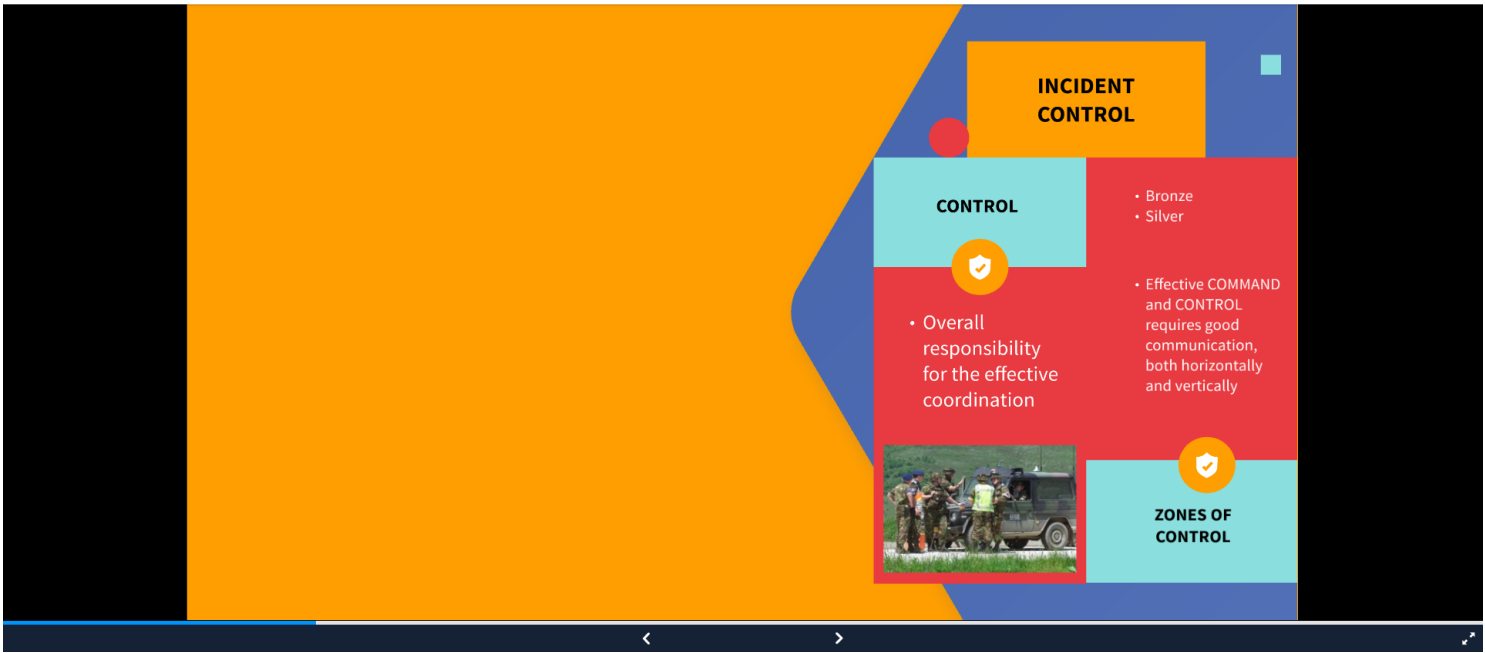
- Attendant
  - Command: acting ambulance commander
  - Safety: 1-2-3, Steps 1-2-3
  - Communications: "METHANE"
  - Assessment
  - METHANE 2
  - CCP
  - Parking
  - Circuit
- Assistant
  - Stay with vehicle
  - Blue lights

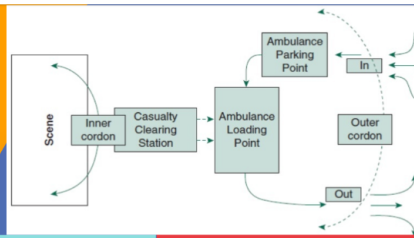


MATURE  
SCENE

- Pre-designated incident commander now at scene.
- Command vehicle now at scene, located close to other services' command vehicles
- All other ambulances have extinguished beacons





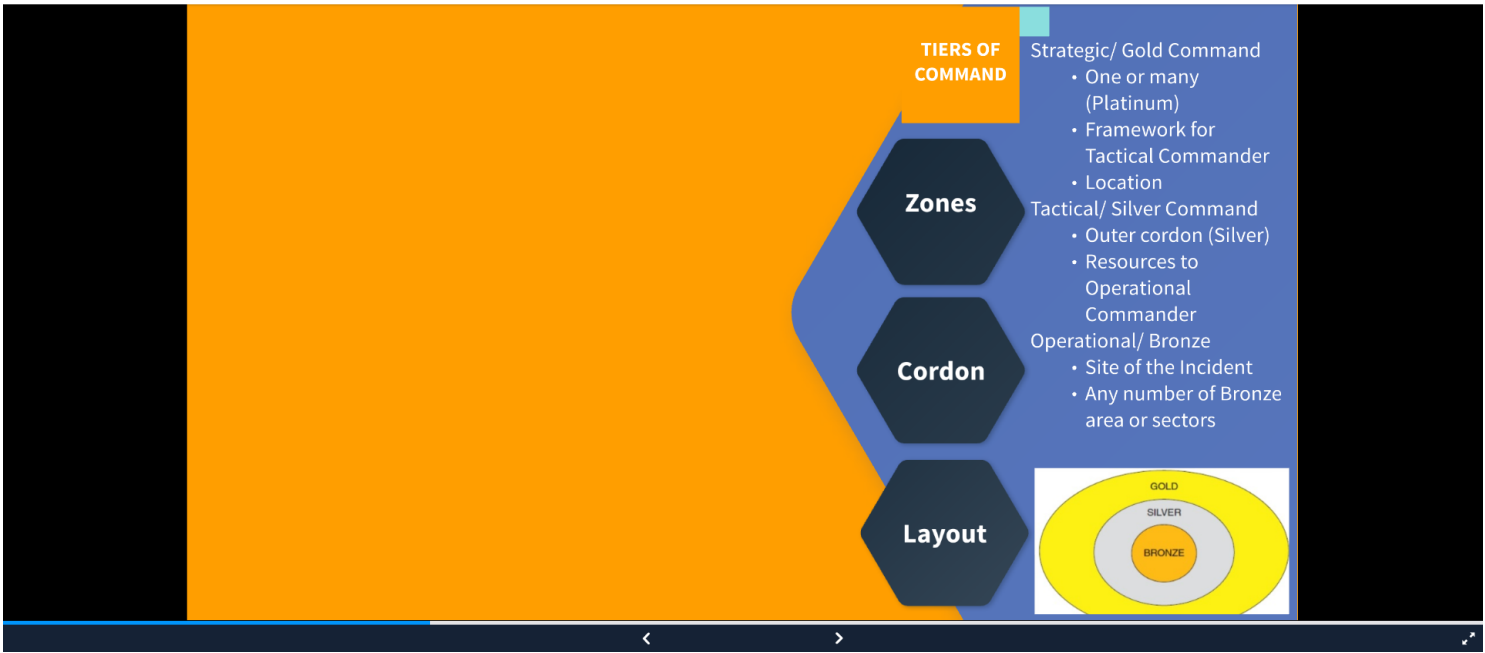


### CORDONS

- Support the movement of emergency services to and from the incident
- Inner Cordon (Scene): Not always . Marked when hazards. Logbook
- Outer Cordon (Incident): Extent and location. Means of cordon. Logbook







**CHAIN OF COMMAND**

**Organization Silver Area**

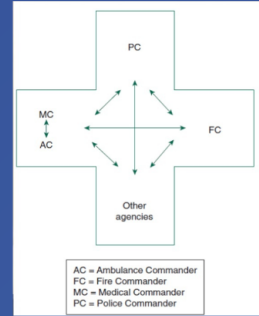
**Organization Bronze Area**

Each service Vertical chain of command at the scene.

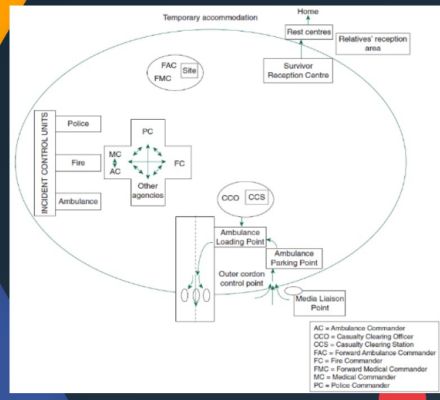
No repeatedly changes of command. It will interrupt the continuity of management.

Interactions of Silver Commander vertically and horizontally.

Health Service commanders are managers and must not be involved directly in the rescue process or the treatment of the injured.



### Organization Silver Area



**COMMAND  
&  
CONTROL****Responsibilities**

- Delegate key tasks to other medical personnel.
- Determine the need for support from voluntary agencies in an ambulance aid role and to oversee treatment provided by these personnel.
- Establish specialist medical equipment needs and liaise with the Bronze Commander to ensure supply.
- Briefing and Debriefing of clinical staff arriving on -scene.
- Can follow prepared action card.

**SAFETY**

Responsibilities

- Ensure the safety of medical service responders.



COMMUNICATION

### Responsibilities

- Liaise with the HC, PC, FC.
- Ensure radio communications are provided to appropriate health personnel.
- Confirm access and egress routes for Health Service vehicles with the Police.
- Liaise with the Police regarding media briefings.
- Establish and maintain a flow of information to receiving hospitals.



ASSESSMENT

Responsibilities

- Carry out a scene assessment.
- Determine the need for medical and nursing personnel at the scene.



## TRIAGE

### Responsibilities

- Oversee triage and treatment provided by medical personnel.
- Ensure effective secondary triage is established.
- Determine the use of T4 category.



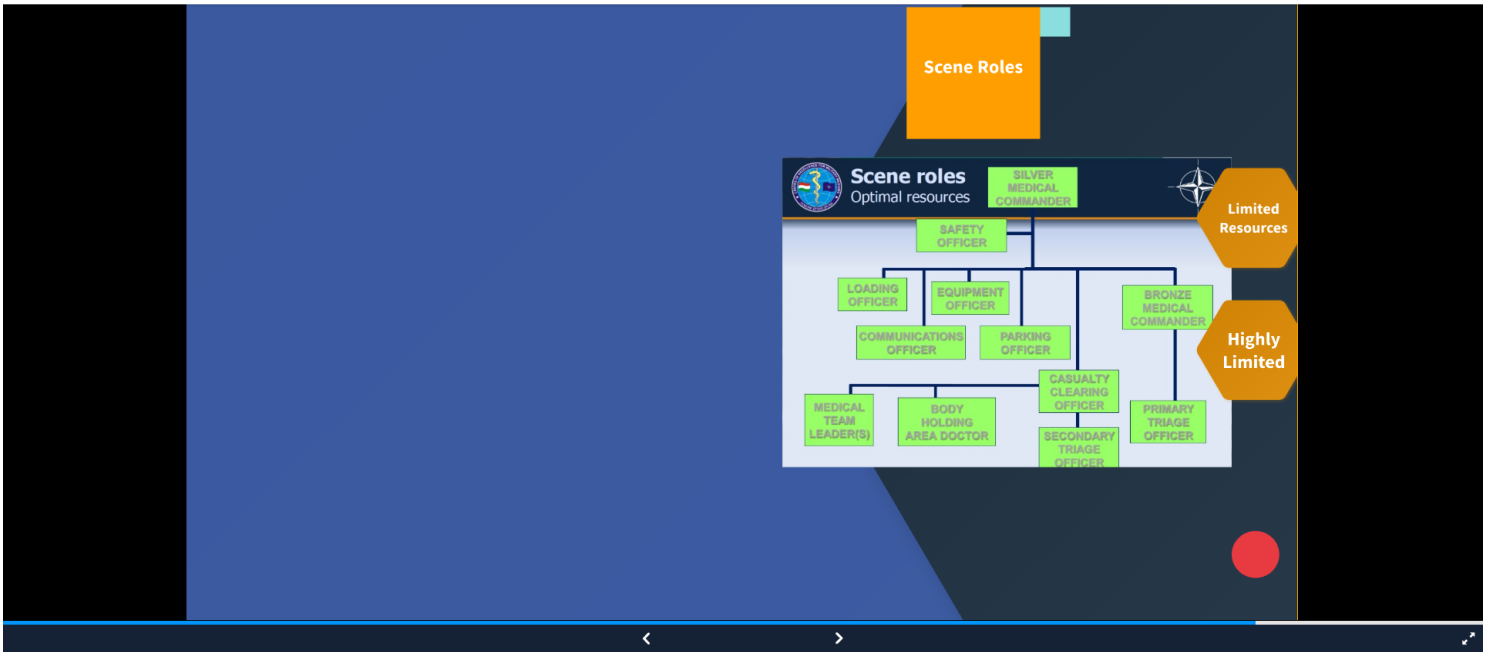


**TRANSPORT**

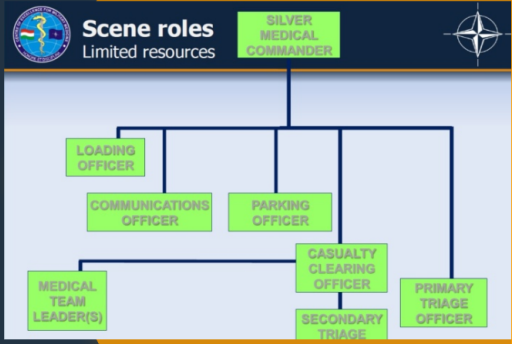
Responsibilities

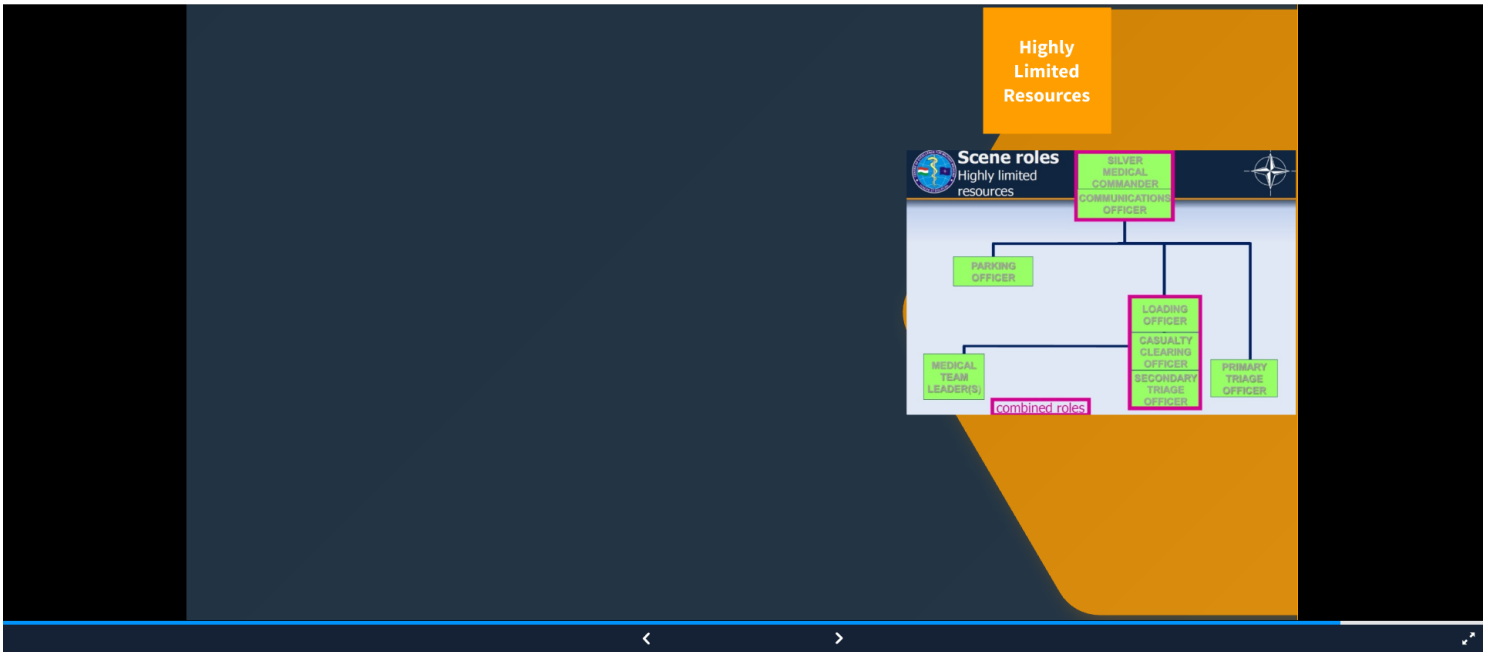
- Determine which hospitals will receive casualties in liaison with the HC.
- Organize the most suitable transport for casualties.
- Arrange for replenishment of equipment.





Limited Resources





QUESTIONS



athanasios.kalogeropoulos@gmail.com

