

SFS: Superior Frontal sulcus

PreCS: PreCentral sulcus;

CS: Central sulcus (of Rolando);

IFS: Inferior Frontal sulcus

IPS: IntraParietal sulcus

SFS PreCS CS PostCS IPS

ISJ: Intermediary sulcus of Jensen

LSasc: Ascending ramus

IFS

LSpost

SOS

ISJ

LSasc

LS

IRP

IOS

LShor: Ascending Horizontal ramus

LShor

ASyP

STS

IOS: Inferior Occipital sulcus

LSasc: Ascending ramus

ITS

LSpost: Posterior ramus

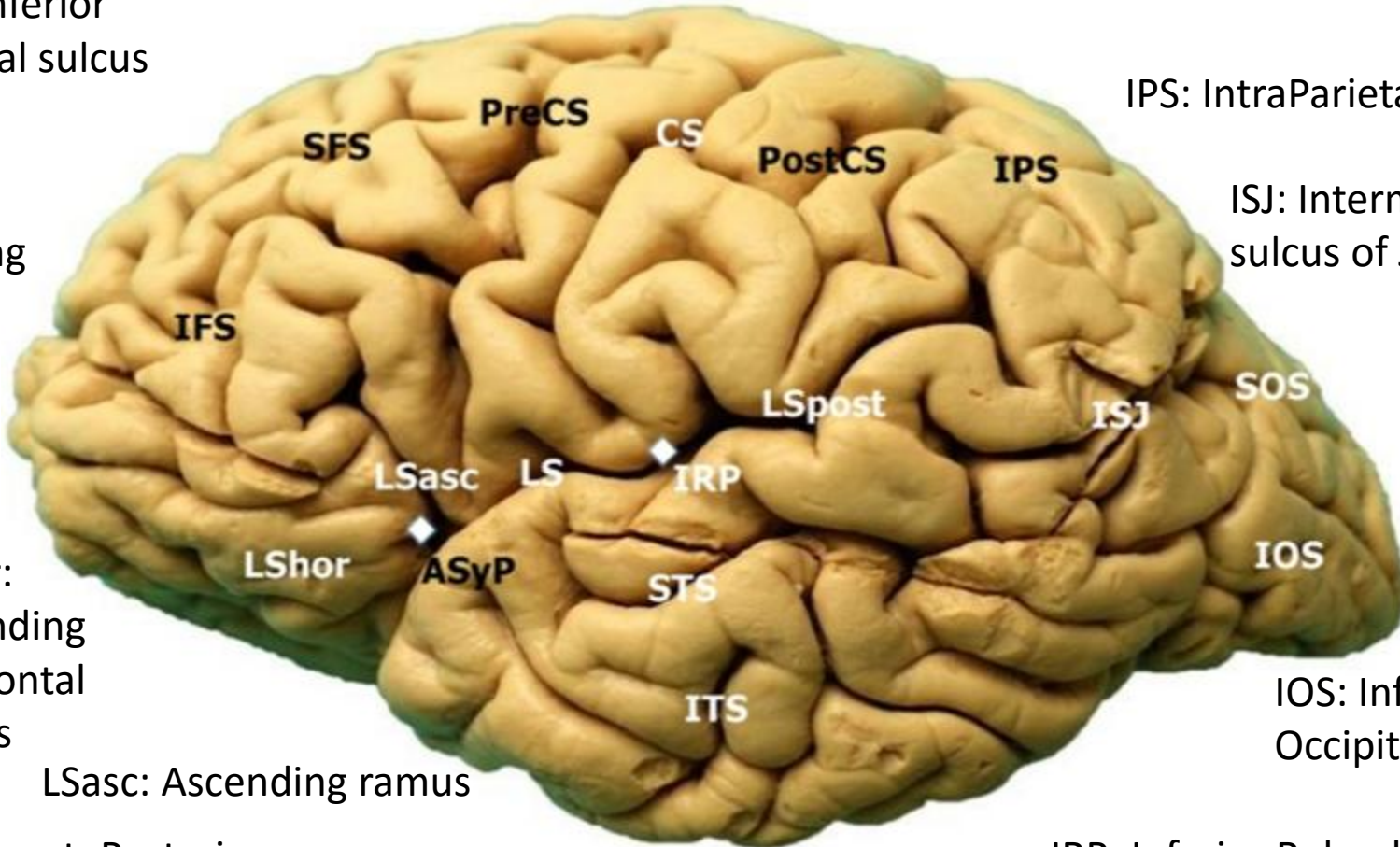
LS: Lateral sulcus (of Sylvius)

IRP: Inferior Rolandic Point

ASyP: anterior sylvian point

STS: Superior Temporal sulcus;

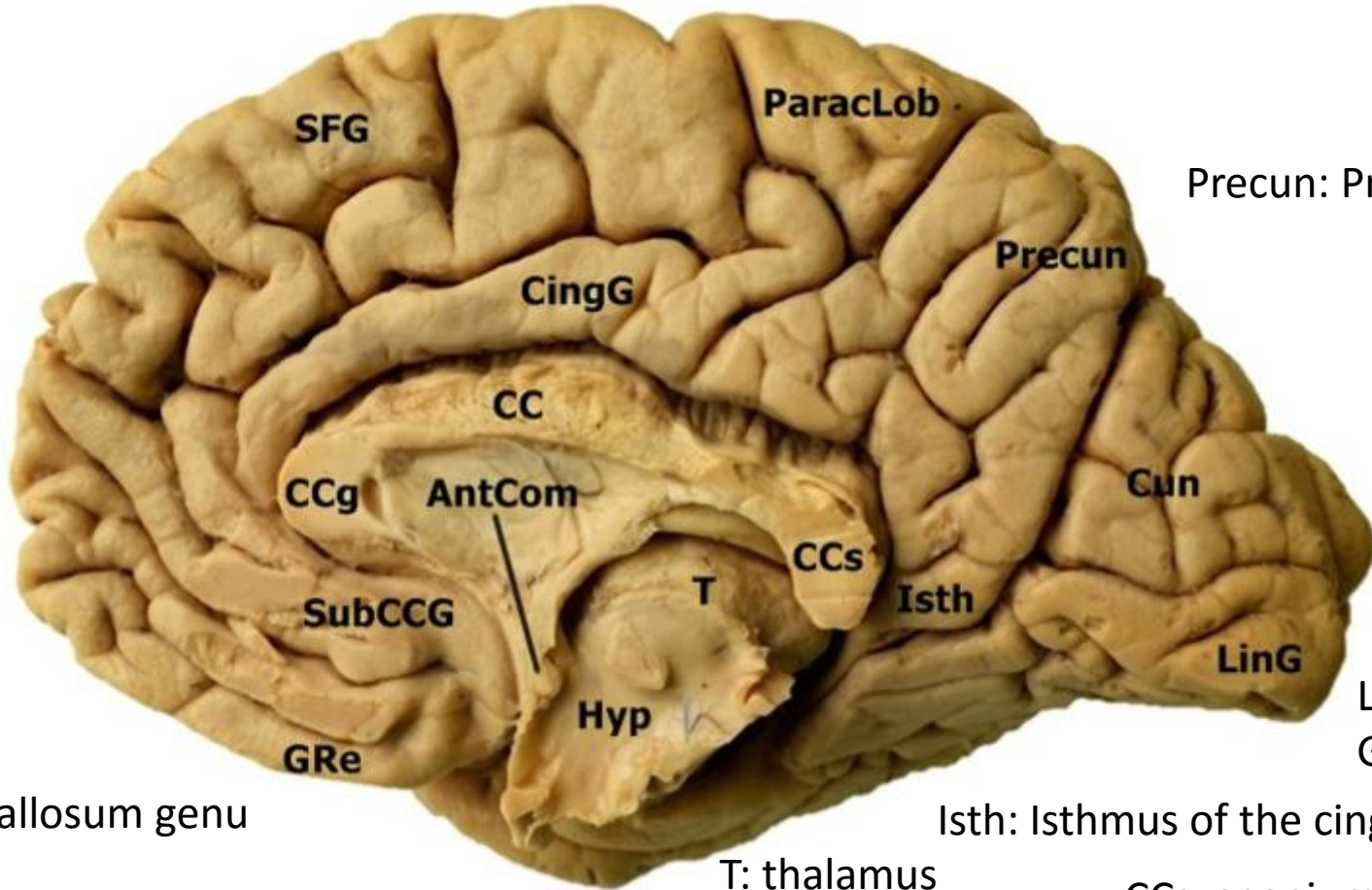
ITS: Inferior Temporal sulcus



SFG: Superior Frontal gyrus

ParacLob: Paracentral lobule

CC:
Corpus
callosum



Precun: Precuneus

Cun: Cuneus

LinG: Lingual
Gyrus

Isth: Isthmus of the cingulate gyrus

CCs: splenium

T: thalamus

Hyp: hypothalamus

AntCom: Anterior commissure

CCg:
Corpus callosum genu

SubCCG:
Subcallosal gyrus

GRe: Gyrus Rectus (or Straight Gyrus)

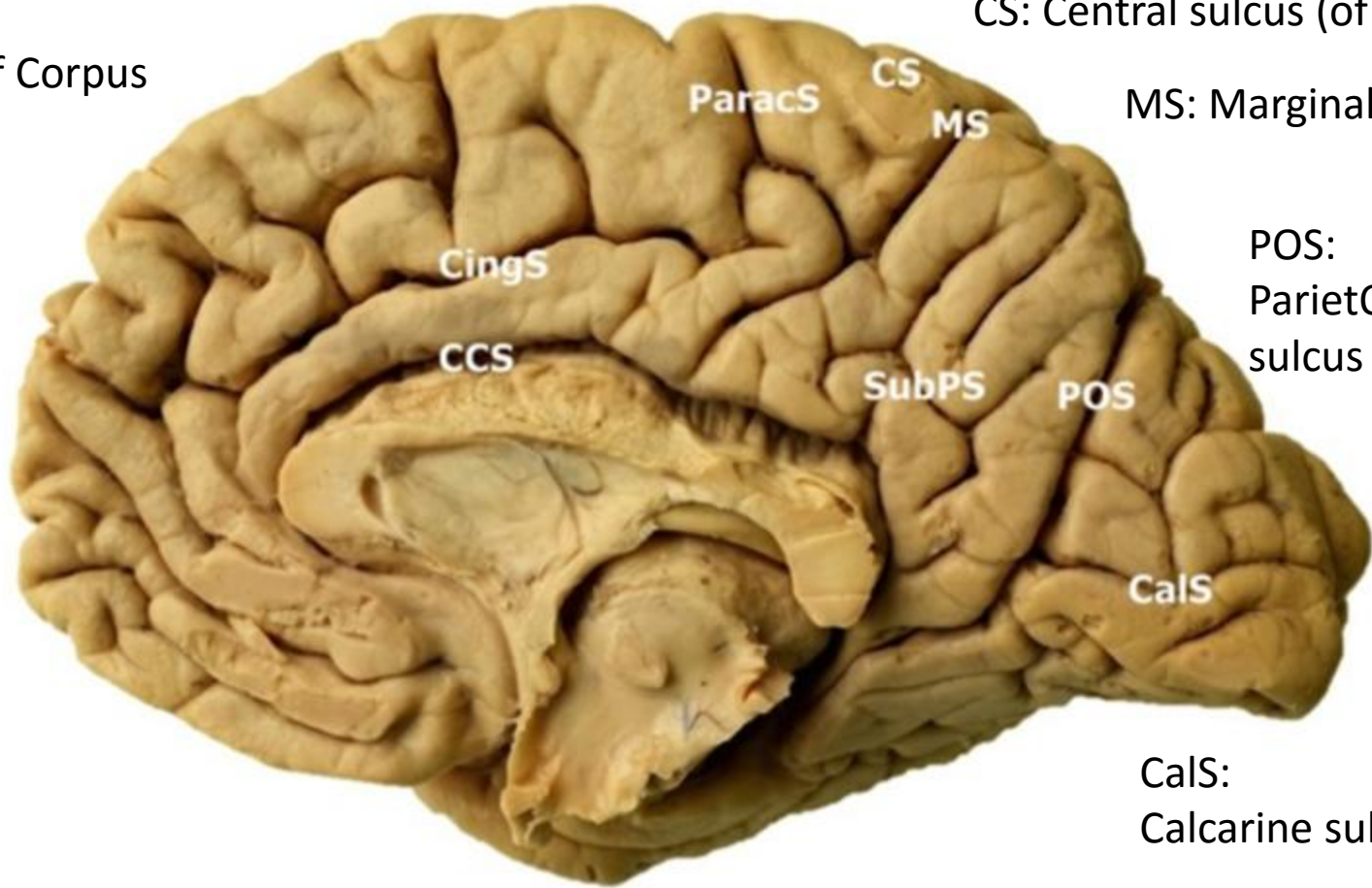
CingS: Cingulate sulcus

ParacS: Paracentral sulcus

CS: Central sulcus (of Rolando)

CCS: Sulcus of Corpus Callosum

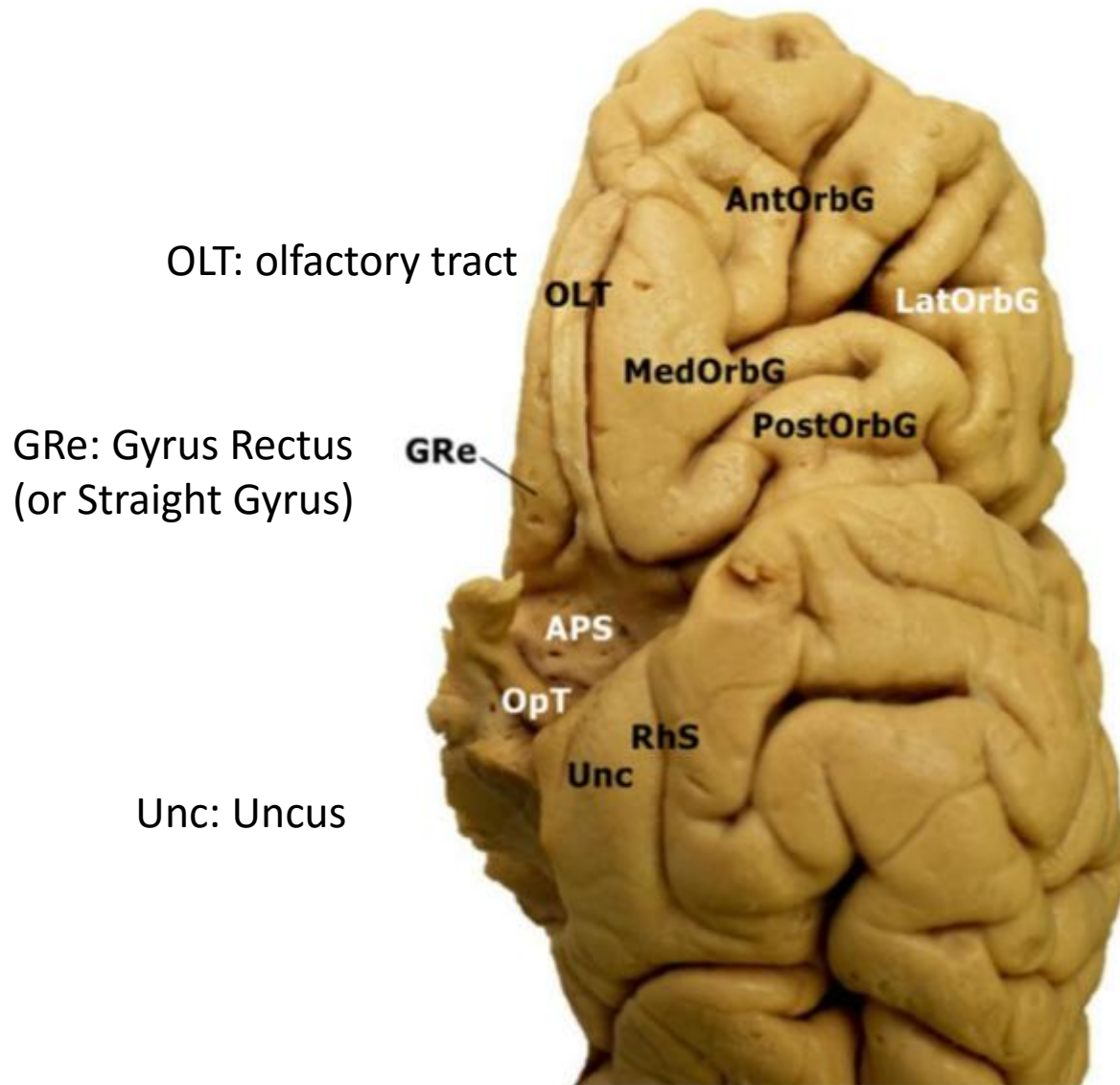
MS: Marginal sulcus



POS:
ParietOccipital
sulcus

CalS

CalS:
Calcarine sulcus

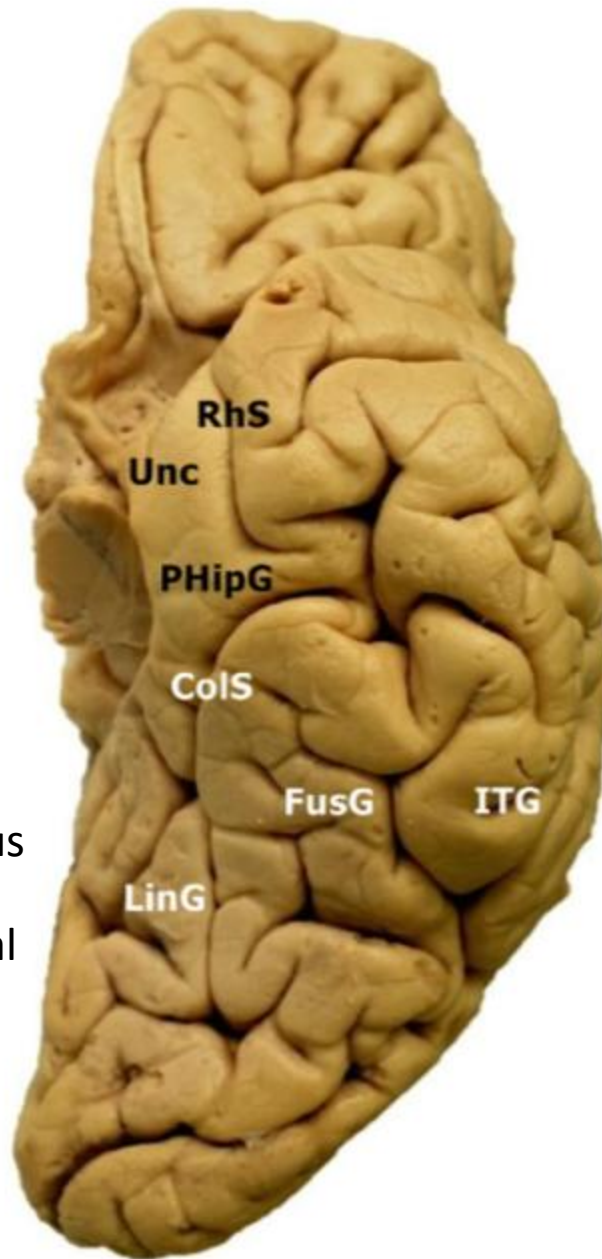


PHipG:
ParaHippocampal gyrus

Unc: Uncus

ColS: collateral sulcus

LinG: Lingual
Gyrus



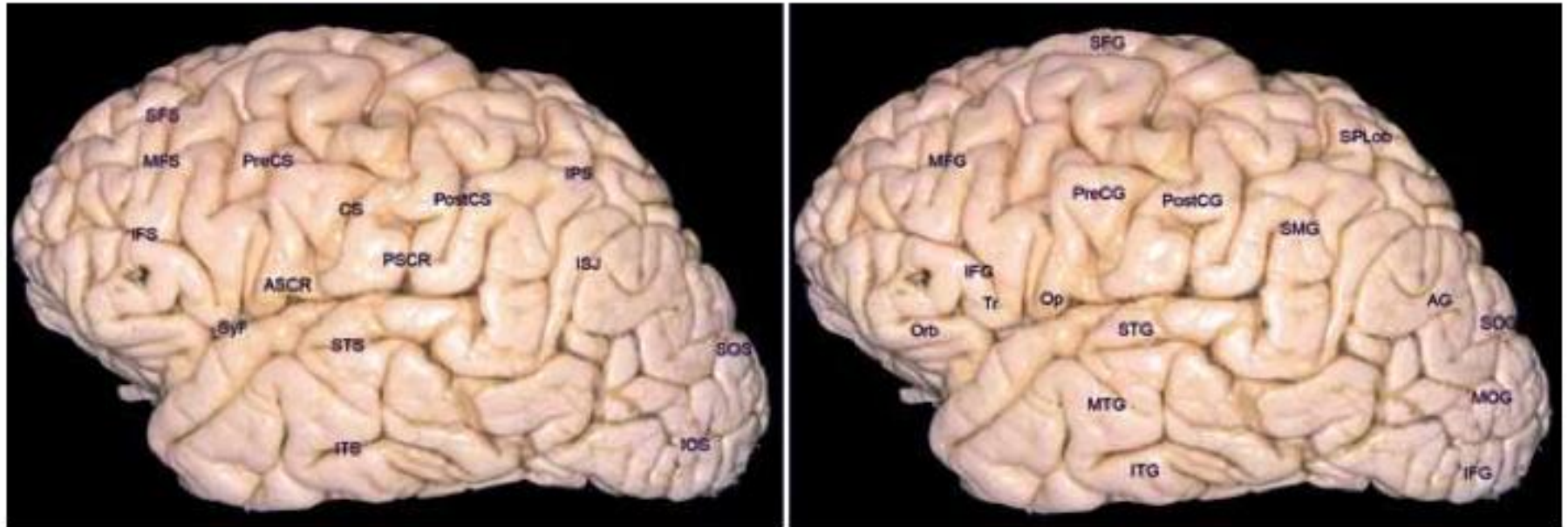
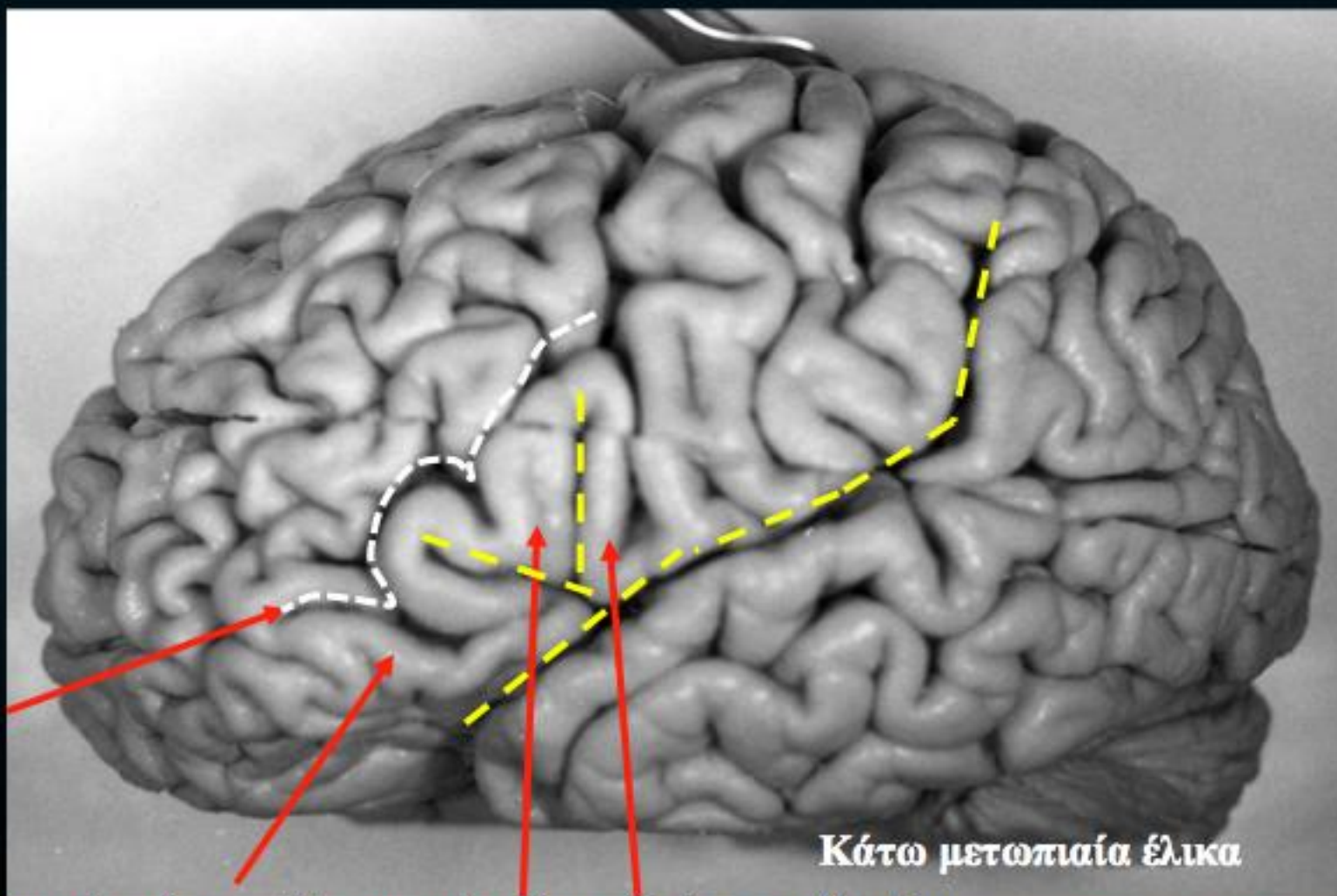


FIG. 3. The main sulci (left) and gyri (right) of the superolateral surface of the brain. AG = angular gyrus; ASCR = anterior subcentral ramus of sylvian fissure; CS = central sulcus; IFG = inferior frontal gyrus; IFS = inferior frontal sulcus; IOS = inferior occipital sulcus; IPS = intraparietal sulcus; ISJ = intermediary sulcus of Jensen; ITG = inferior temporal gyrus; ITS = inferior temporal sulcus; MFG = middle frontal gyrus; MFS = middle frontal sulcus; MOG = middle occipital gyrus; MTG = middle temporal gyrus; Op = opercular part of inferior frontal gyrus; Orb = orbital part of inferior frontal gyrus; PostCG = postcentral gyrus; PostCS = postcentral sulcus; PreCG = precentral gyrus; PreCS = precentral sulcus; PSCR = posterior subcentral ramus of sylvian fissure; SFG = superior frontal gyrus; SFS = superior frontal sulcus; SMG = supramarginal gyrus; SOG = superior occipital gyrus; SOS = superior occipital sulcus; SPLob = superior parietal lobe; STG = superior temporal gyrus; STS = superior temporal sulcus; SyF = sylvian fissure; Tr = triangular part of inferior frontal gyrus.



**Κάτω
μετωπιαία
αύλακα**

Κάτω μετωπιαία έλικα

Κογχική μοίρα

Τριγωνική μοίρα

Καλυπτρική μοίρα

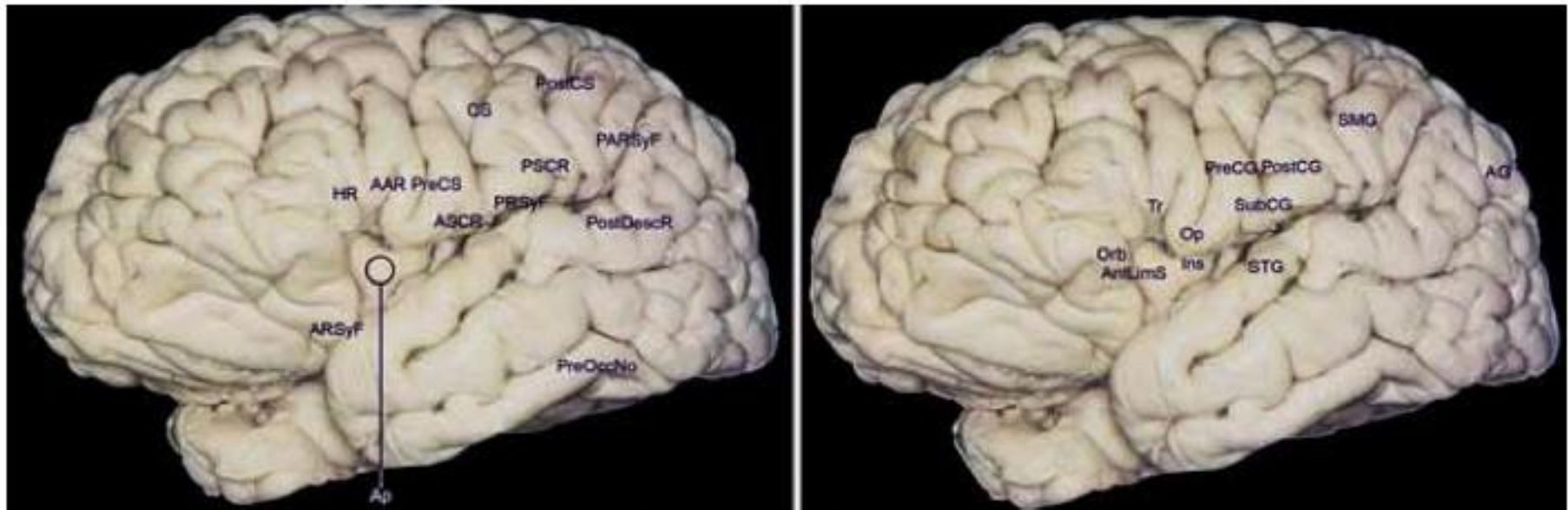


FIG. 6. Sulci (left) and gyri (right) of the frontoorbital, frontoparietal, and temporal operculi. AAR = anterior ascending ramus of the sylvian fissure; AG = angular gyrus; AntLimS = anterior limiting sulcus of the insula; Ap = insular apex; ARSyF = anterior ramus of sylvian fissure; ASCR = anterior subcentral ramus of sylvian fissure; CS = central sulcus; HR = horizontal ramus of sylvian fissure; Ins = insula; Op = opercular part of inferior frontal gyrus; Orb = orbital part of inferior frontal gyrus; PARSyF = posterior ramus of sylvian fissure; PostCG = postcentral gyrus; PostCS = postcentral sulcus; PostDescR = posterior descending ramus of sylvian fissure; PreCG = precentral gyrus; PreCS = precentral sulcus; PreOccNo = preoccipital notch; PRSyF = posterior ramus of sylvian fissure; PSCR = posterior subcentral ramus of sylvian fissure; SMG = supramarginal gyrus; STG = superior temporal gyrus; SubCG = subcentral gyrus; Tr = triangular part of inferior frontal gyrus.

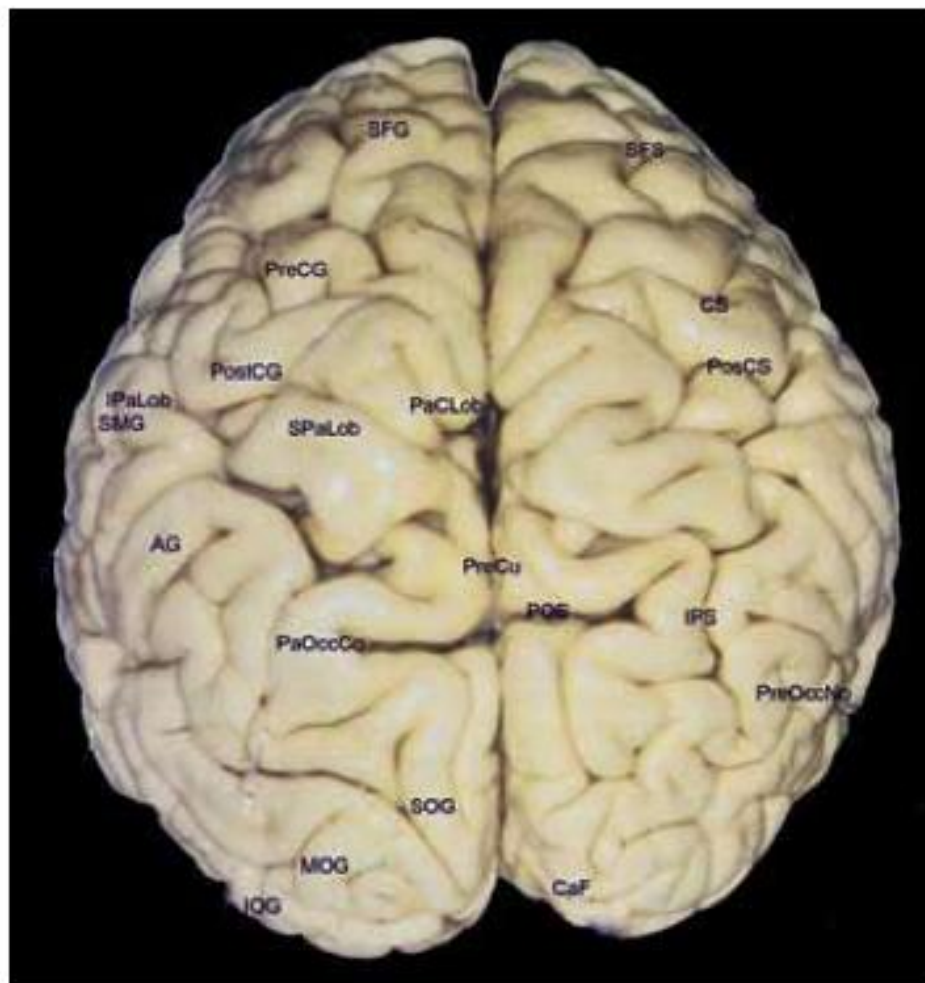


FIG. 9. Superior view of the cerebral hemispheres. AG = angular gyrus; CaF = calcarine fissure; CS = central sulcus; IOG = inferior occipital gyrus; IPaLob = inferior parietal lobule; IPS = intraparietal sulcus; MOG = middle occipital gyrus; PaCLob = paracentral lobule; PaOccCo = parietooccipital arch; POS = parietooccipital sulcus; PosCS = postcentral sulcus; PostCG = postcentral gyrus; PreCG = precentral gyrus; PreCu = precuneus; PreOccNo = preoccipital notch; SFG = superior frontal gyrus; SFS = superior frontal sulcus; SMG = supramarginal gyrus; SOG = superior occipital gyrus; SPaLob = superior parietal lobe.

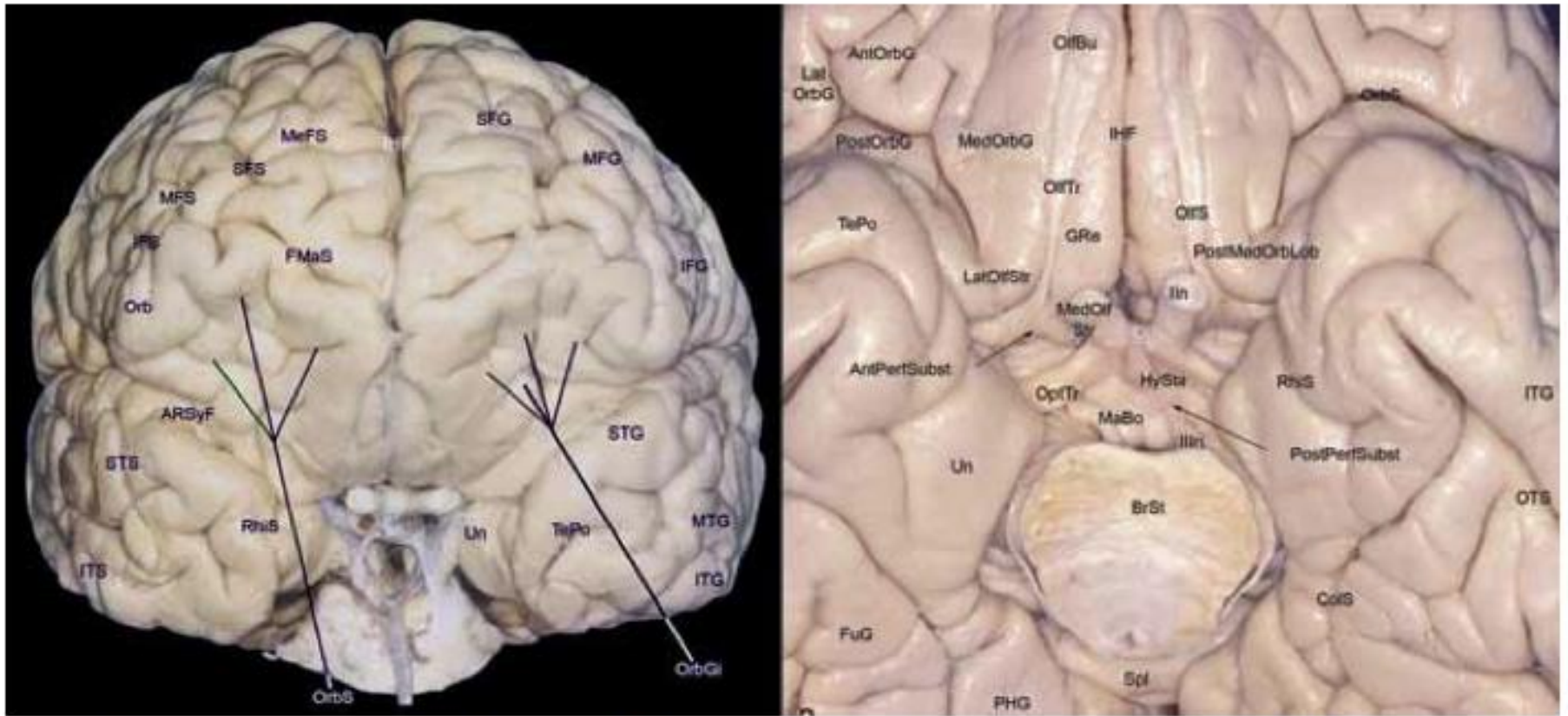
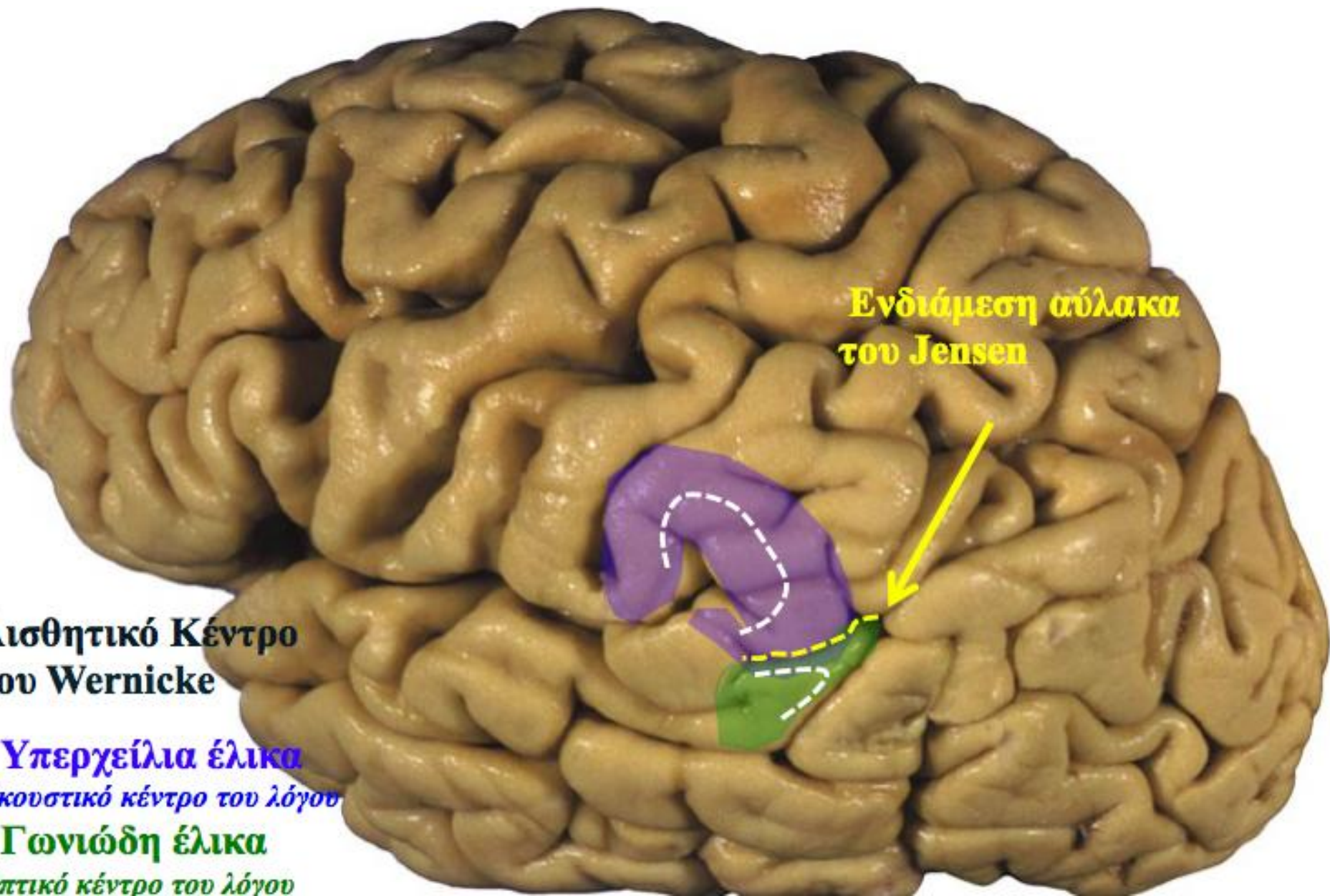
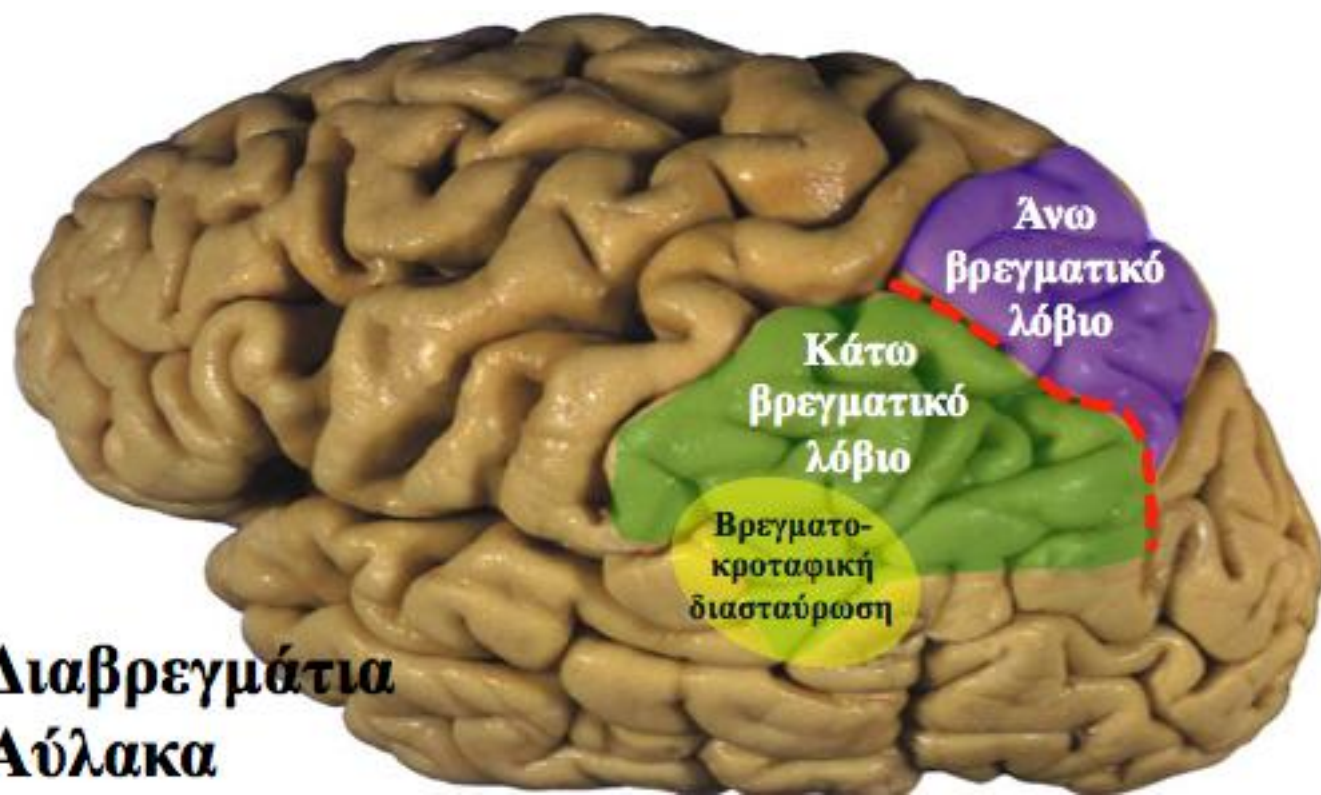


FIG. 7. Anterior view of cerebral hemispheres (**left**) and view of the basal frontotemporal surface (**right**). AntOrbG = anterior orbital gyrus; AntPerfSubst = anterior perforated substance; ARSyF = anterior ramus of sylvian fissure; BrSt = brainstem (pons); ColS = collateral sulcus; FMaS = frontomarginal sulcus; FuG = fusiform gyrus; GRe = gyrus rectus; HySta = hypophyseal stalk; IFG = inferior frontal gyrus; IFS = inferior frontal sulcus; IHF = interhemispheric fissure; Ist = isthmus of cingulate gyrus; ITG = inferior temporal gyrus; ITS = inferior temporal sulcus; LatOlfStr = lateral olfactory striae; LatOrbG = lateral orbital gyrus; MaBo = mamillary body; MedOlfStr = medial olfactory striae; MedOrbG = medial orbital gyrus; MeFS = medial frontal sulcus; MFG = middle frontal gyrus; MFS = middle frontal sulcus; MTG = middle temporal gyrus; OlfBu = olfactory bulb; OlfS = olfactory sulcus; OlfTr = olfactory tract; OptTr = optic tract; Orb = orbital part of inferior frontal gyrus; OrbGi = orbital gyri; OrbS = orbital sulcus; OTS = occipitotemporal sulcus; PHG = parahippocampal gyri; PostMedOrbLob = posteromedial orbital lobule; PostOrbG = posterior orbital gyrus; PostPerfSubst = posterior perforated substance; RhiS = rhinal sulcus; SFG = superior frontal gyrus; SFS = superior frontal sulcus; Spl = splenium of corpus callosum; STG = superior temporal gyrus; STS = superior temporal sulcus; TePo = temporal pole; Un = uncus; IIn = optical nerve; IIIn = oculomotor nerve.





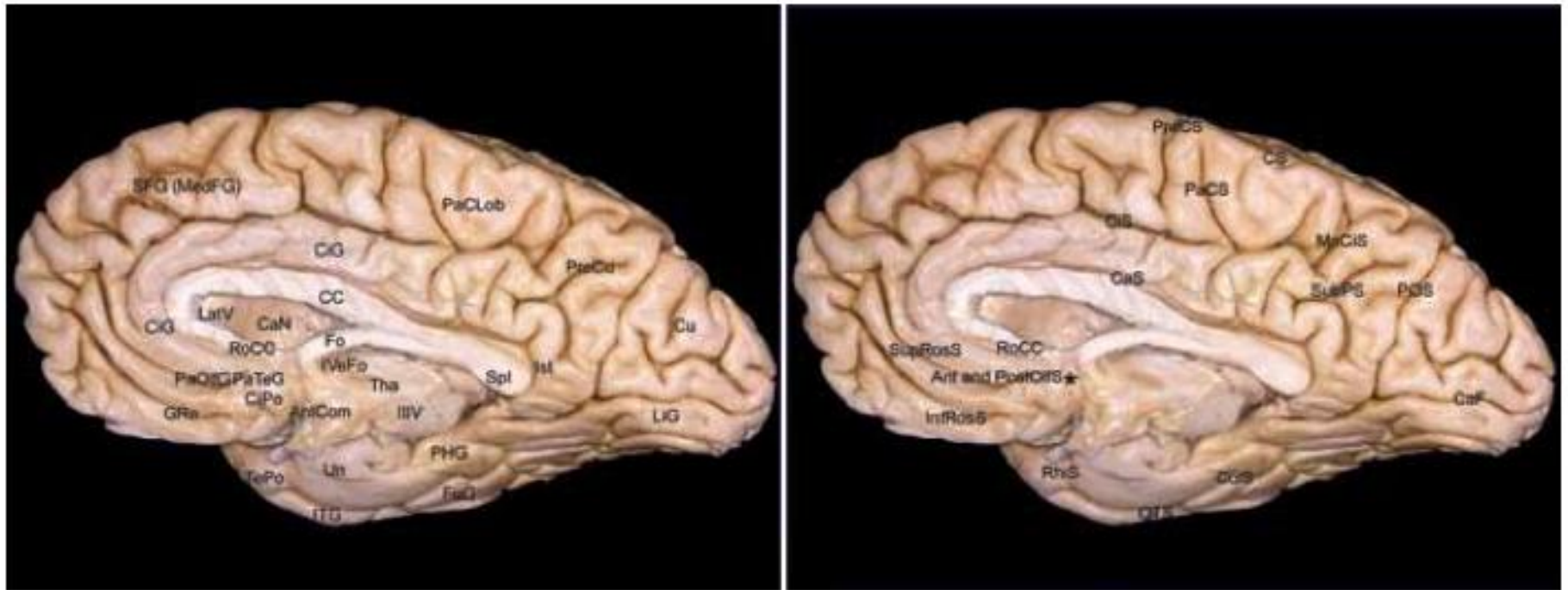
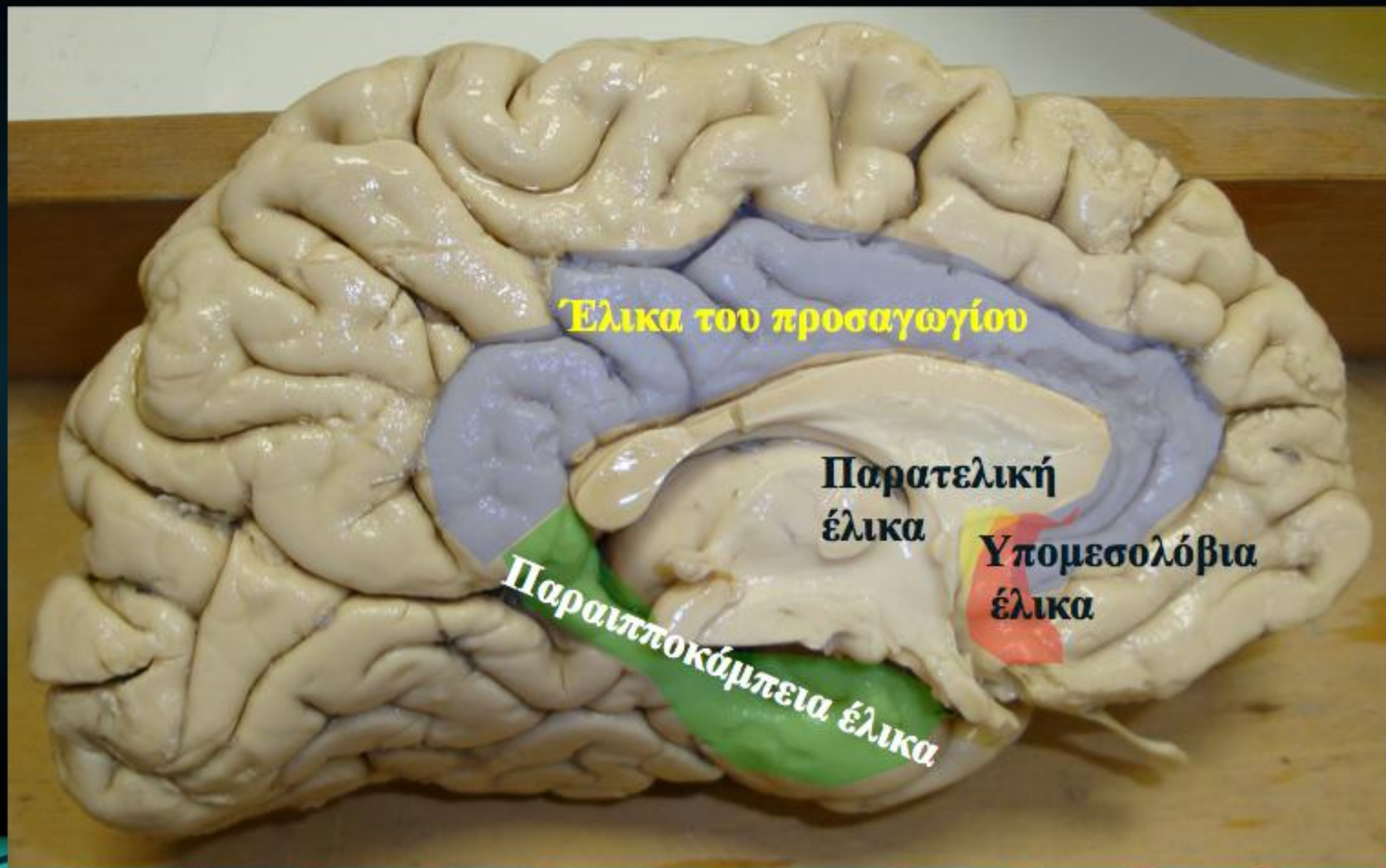


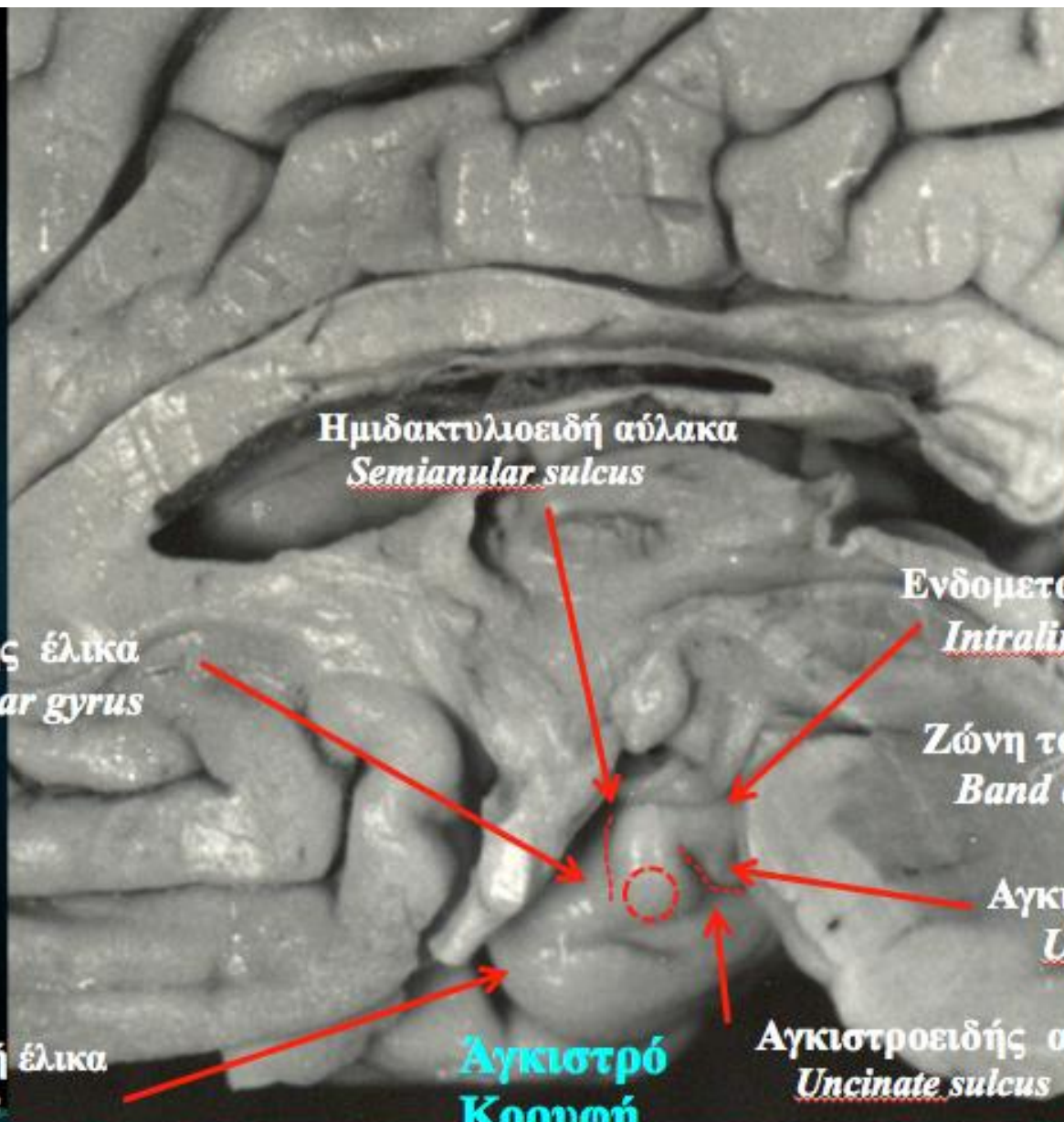
FIG. 4. The main sulci (left) and gyri (right) of the medial and basal temporooccipital surfaces. AntCom = anterior commissure; Ant and PostOlfS = anterior and posterior paraolfactory sulcus; CaF = calcarine fissure; CaN = caudate nucleus; CaS = callosal sulcus; CC = corpus callosum; CiG = cingulate gyrus; CiPo = cingulate pole; CiS = cingulate sulcus; CoLS = collateral sulcus; CS = central sulcus; Cu = cuneus; Fo = fornix; FuG = fusiform gyrus; GRe = gyrus rectus; IIIV = third ventricle; InfRosS = inferior rostral sulcus; Ist = isthmus of cingulate gyrus; ITG = inferior temporal gyrus; IVEFo = interventricular foramen of Monro; LatV = lateral ventricle; LiG = lingual gyrus; MaCiS = marginal ramus of the cingulate sulcus; MedFG = medial frontal gyrus; OTS = occipitotemporal sulcus; PaCLob = paracentral lobule; PaCS = paracentral sulcus; PaOlfG = paraolfactory gyri; PaTeG = paraterminal gyrus; PHG = parahippocampal gyri; POS = parietooccipital sulcus; PreCS = precentral sulcus; PreCu = precuneus; RhiS = rhinal sulcus; RoCC = rostrum of the corpus callosum; SFG = superior frontal gyrus; Spl = splenium of corpus callosum; SubPS = subparietal sulcus; SupRosS = superior rostral sulcus; TePo = temporal pole; Tha = thalamus; Un = uncus.

Μετ αιχμακός Λοβός



**Πρόσθιο
Τμήμα**

**Οπίσθιο
Τμήμα**



Ημιδακτυλοειδή αύλακα
Semianular sulcus

Μηνοειδής έλικα
Semilunar gyrus

Ενδομεταιχμιακή έλικα
Intralimbic gyrus

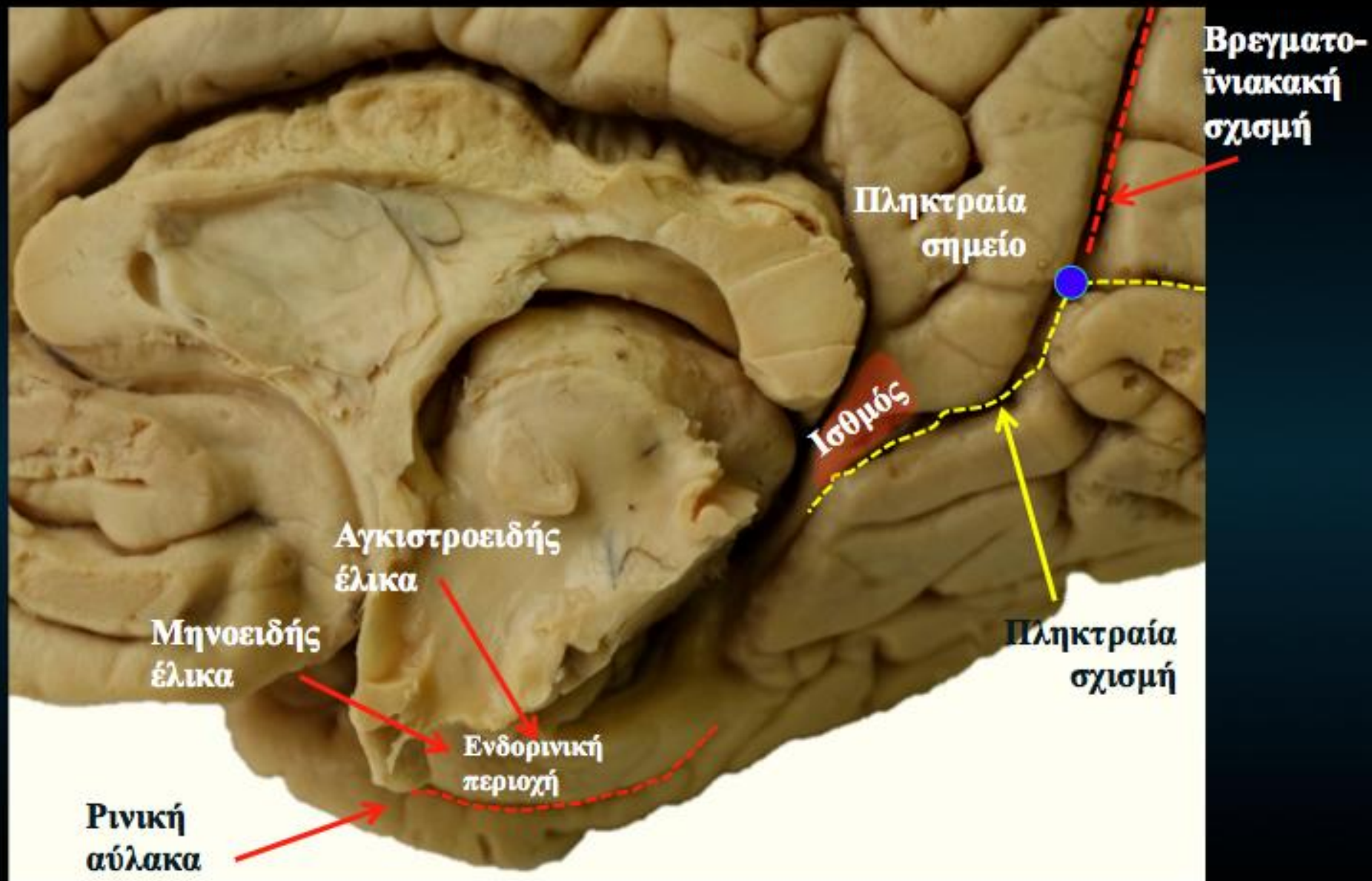
Ζώνη του Giacomini
Band of Giacomini

Αγκιστροειδής έλικα
Uncinate gyrus

Περιβάλλοντική έλικα
Ambient gyrus

**Αγκιστρό
Κορυφή**

Αγκιστροειδής αύλακα
Uncinate sulcus



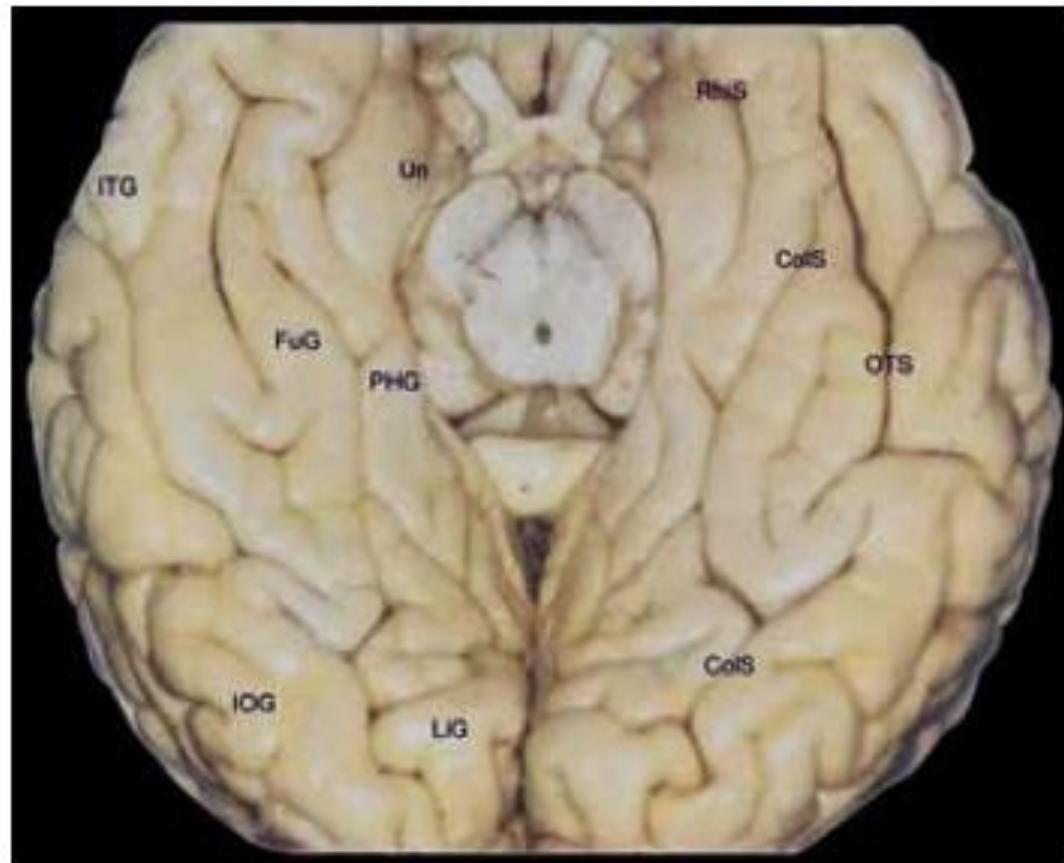
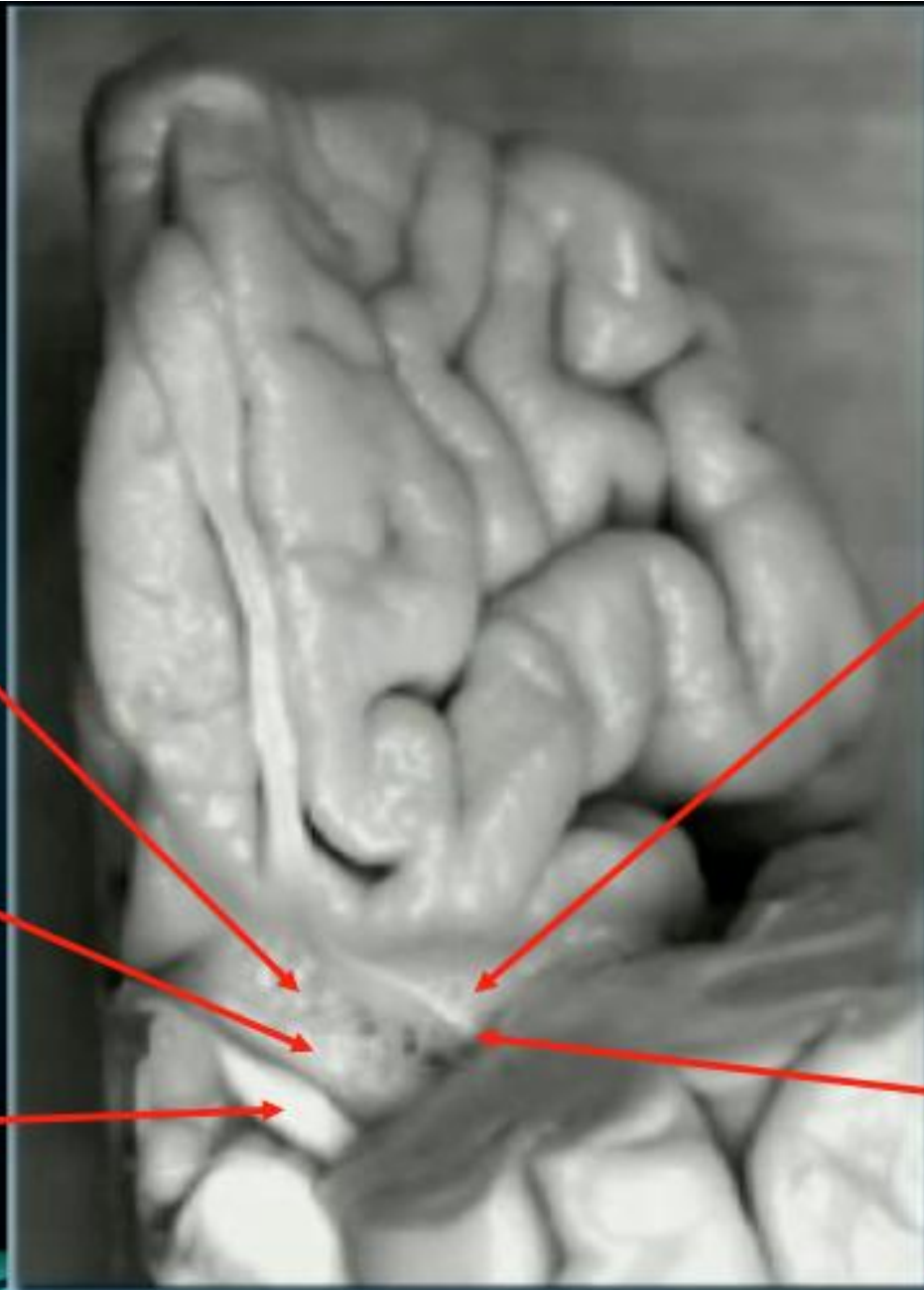


FIG. 10. The basal temporooccipital surface. ColS = collateral sulcus; FuG = fusiform gyrus; IOG = inferior occipital gyrus; ITG = inferior temporal gyrus; LiG = lingual gyrus; OTS = occipitotemporal sulcus; PHG = parahippocampal gyri; RhiS = rhinal sulcus; Un = uncus.

**Πρόσθια
Διατριτή
Ουσία**

**Διαγώνια
Ζώνη του
Broca**

**Οπτική
ταινία**



**Οσφρητικό
φλοίο**

**Οσφρητική
ταινία**

Πρόσθιο τμήμα

Περιβάλλοντική έλικα
Ambient gyrus

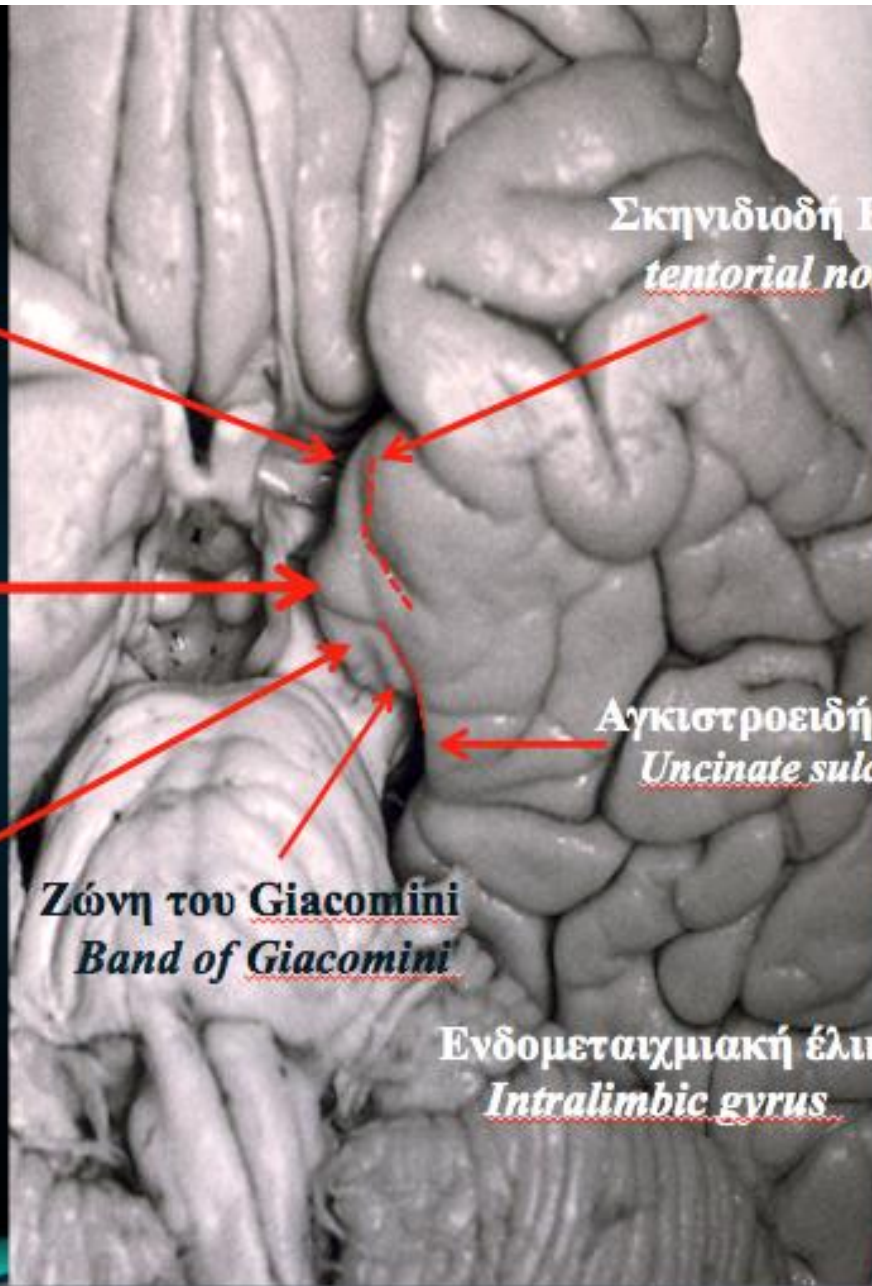
Ημιδακτυλοειδή αύλακα
Semianular sulcus

Μηνοειδής έλικα
Semilunar gyrus

Αγκιστρό
Κορυφή

Οπίσθιο τμήμα

Αγκιστροειδής έλικα
Uncinate gyrus



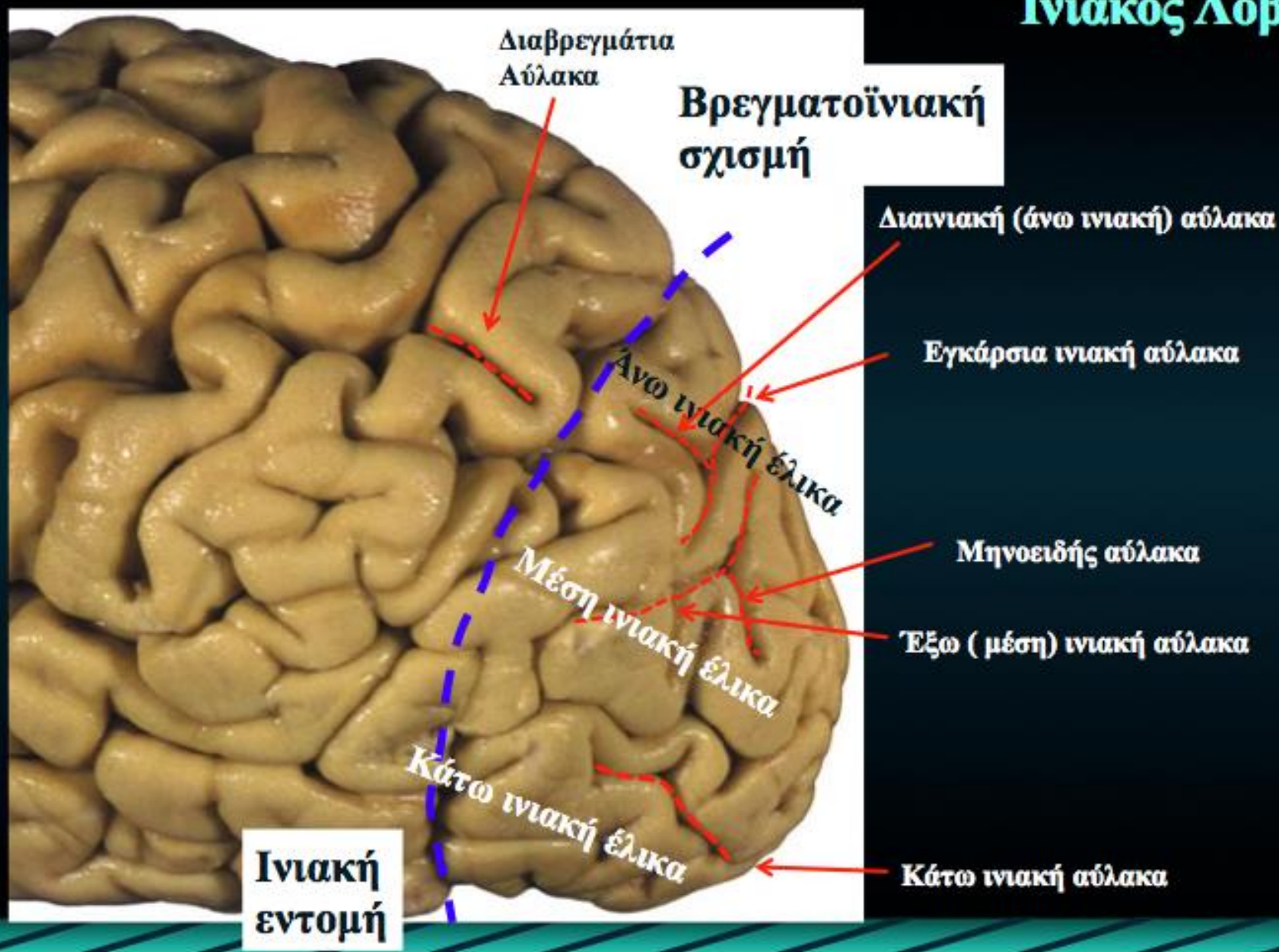
Σκηνοειδή Εντομή
tentorial notch

Αγκιστροειδής αύλακα
Uncinate sulcus

Ζώνη του *Giacomini*
Band of Giacomini

Ενδομεταιχμιακή έλικα
Intralimbic gyrus

Ινιακός Λοβός





*Εγκάρσιες
κροταφικές έλικες*

του Heschl

Μέση

Οπίσθια

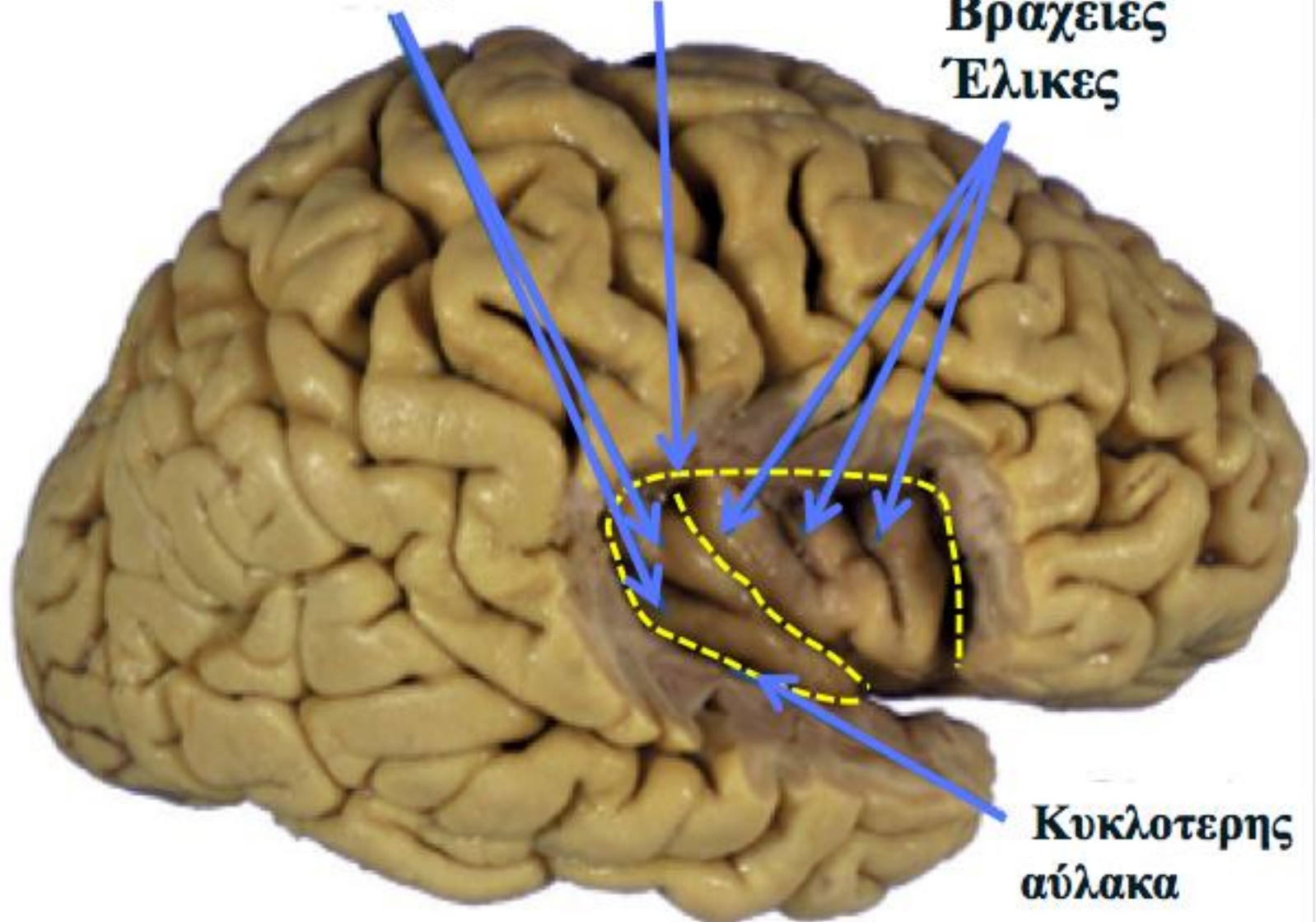
*Πολικό επίπεδο
Planum polare*

*Κροταφικό επίπεδο
Planum temporale*

**Μακριές
Έλικες**

**Κεντρική
αύλακα**

**Βραχειές
Έλικες**



**Κυκλοτερής
αύλακα**