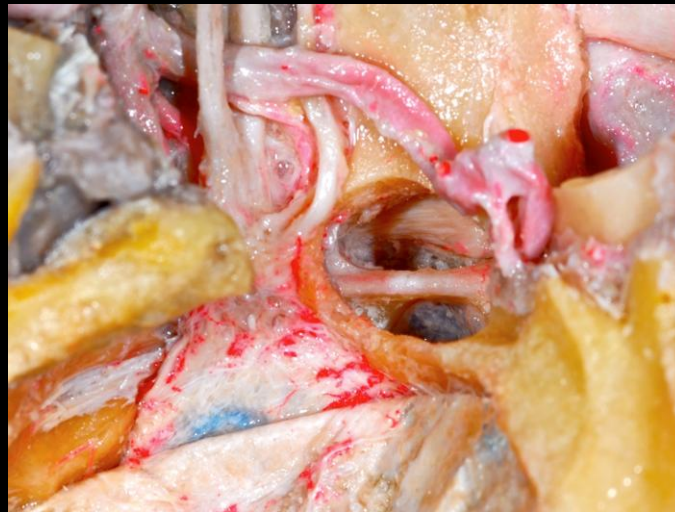


# ΑΝΑΤΟΜΙΚΑ ΠΑΡΑΣΚΕΥΑΣΜΑΤΑ ΕΡΓΑΣΤΗΡΙΑΚΗ ΕΜΠΕΙΡΙΑ



*Σπυρίδων Αρ. Λαφαζάνος MD, PhD  
Αρχίατρος-Νευροχειρουργός  
Επιμελητής Νευροχειρουργικής Κλινικής 401 ΓΣΝΑ  
Διευθυντής Νευροχειρουργικής Κλινικής Νοσοκομείου Metropolitan*

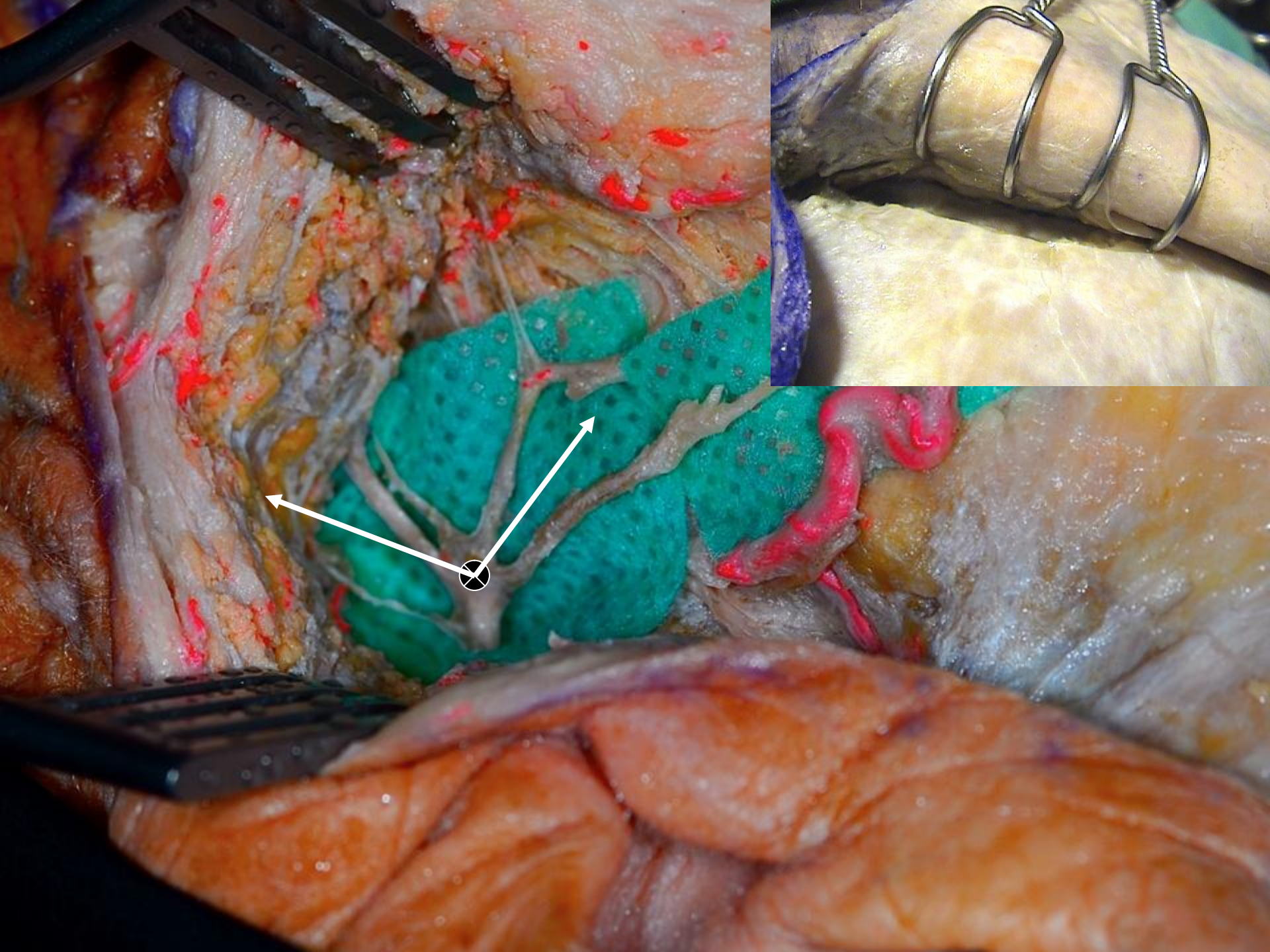
*I profess both to learn and to teach anatomy, not from books but from dissections, not from the position of philosophers but from the fabric of nature.*

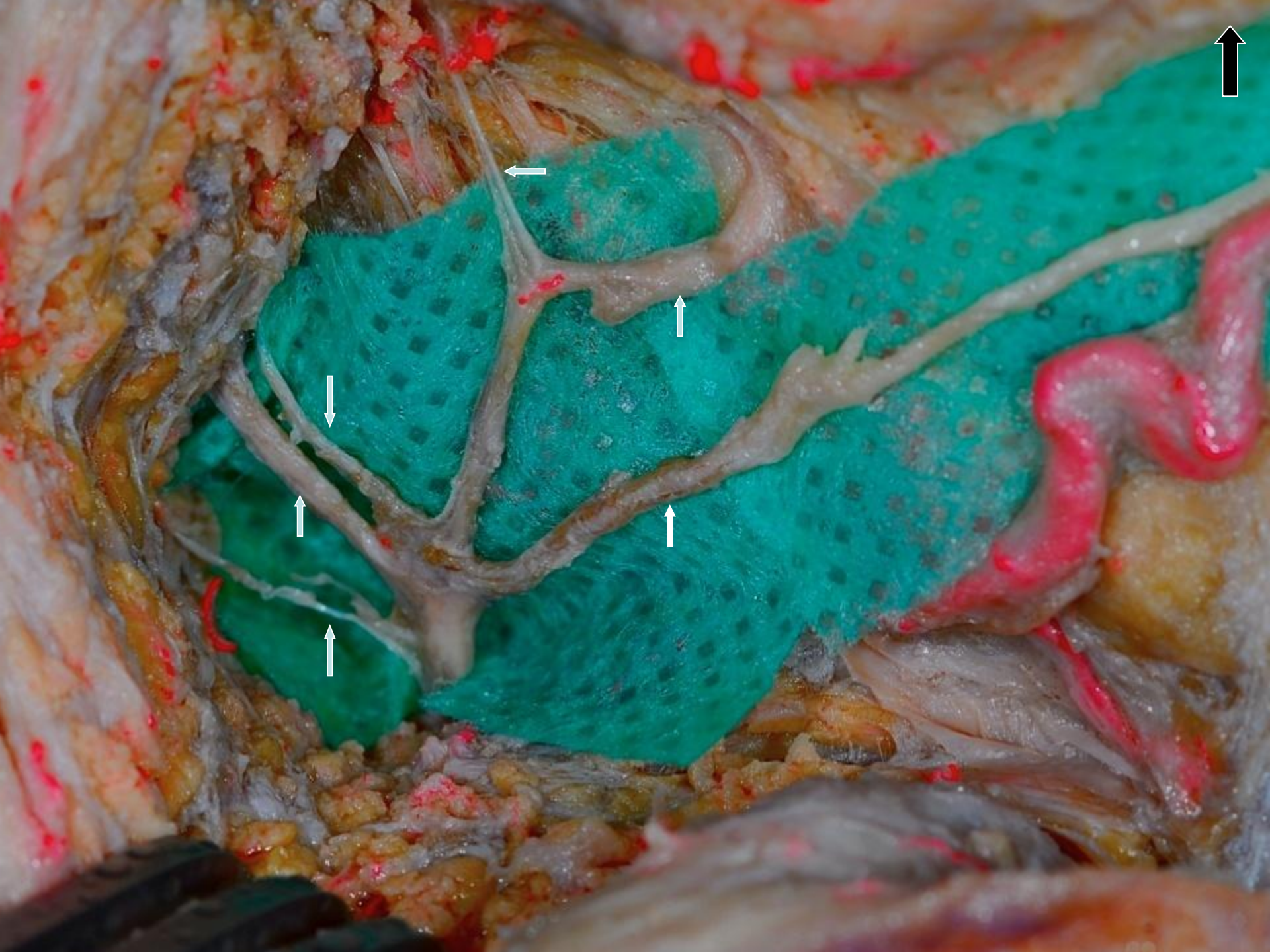
*William Harvey(1578-1657)*

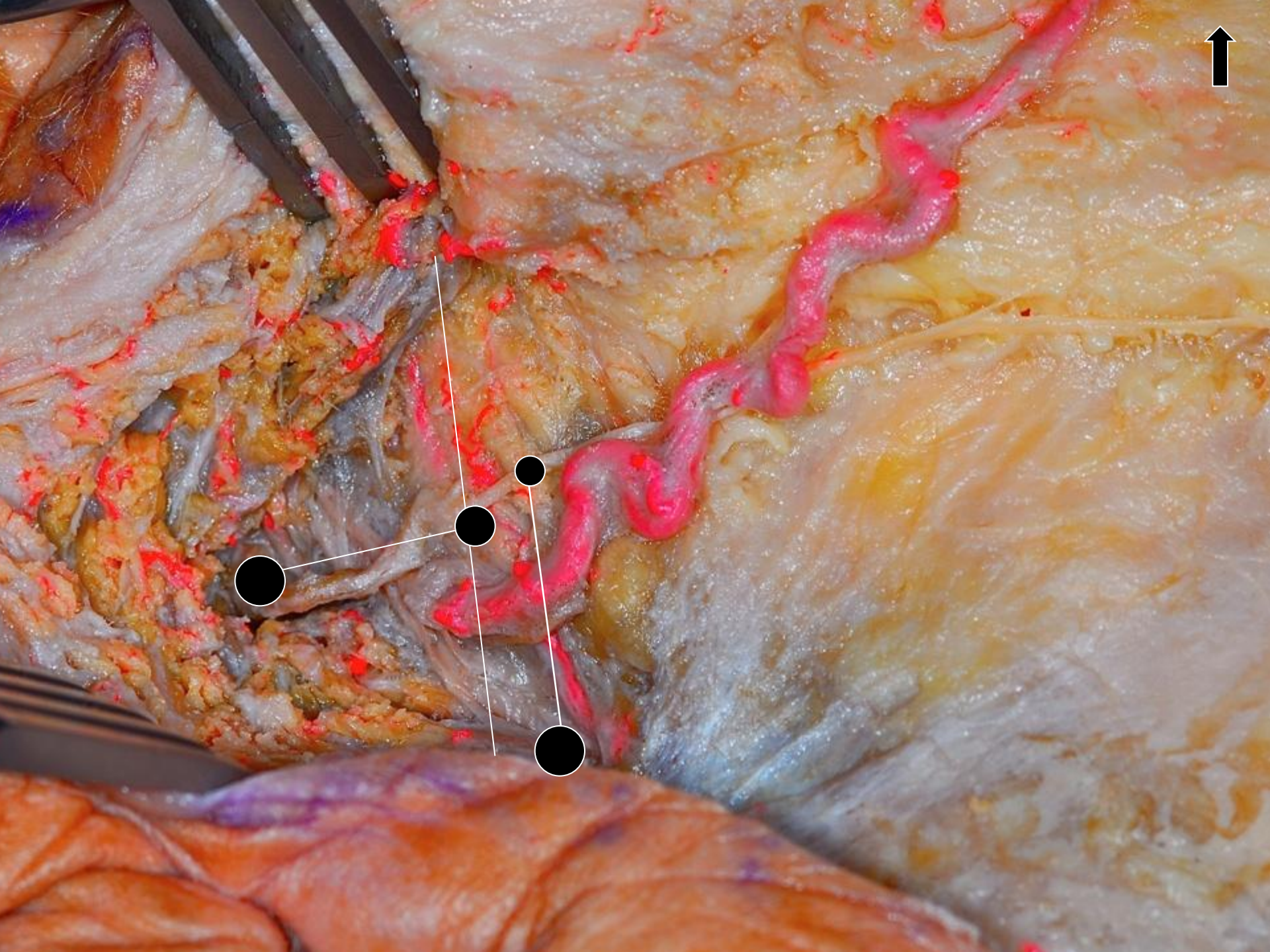
# ΕΣΩ ΚΑΡΩΤΙΔΑ ΑΡΤΗΡΙΑ



ΠΡΟΣΩΠΙΚΟ ΝΕΥΡΟ

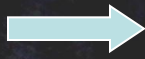
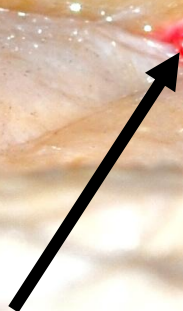
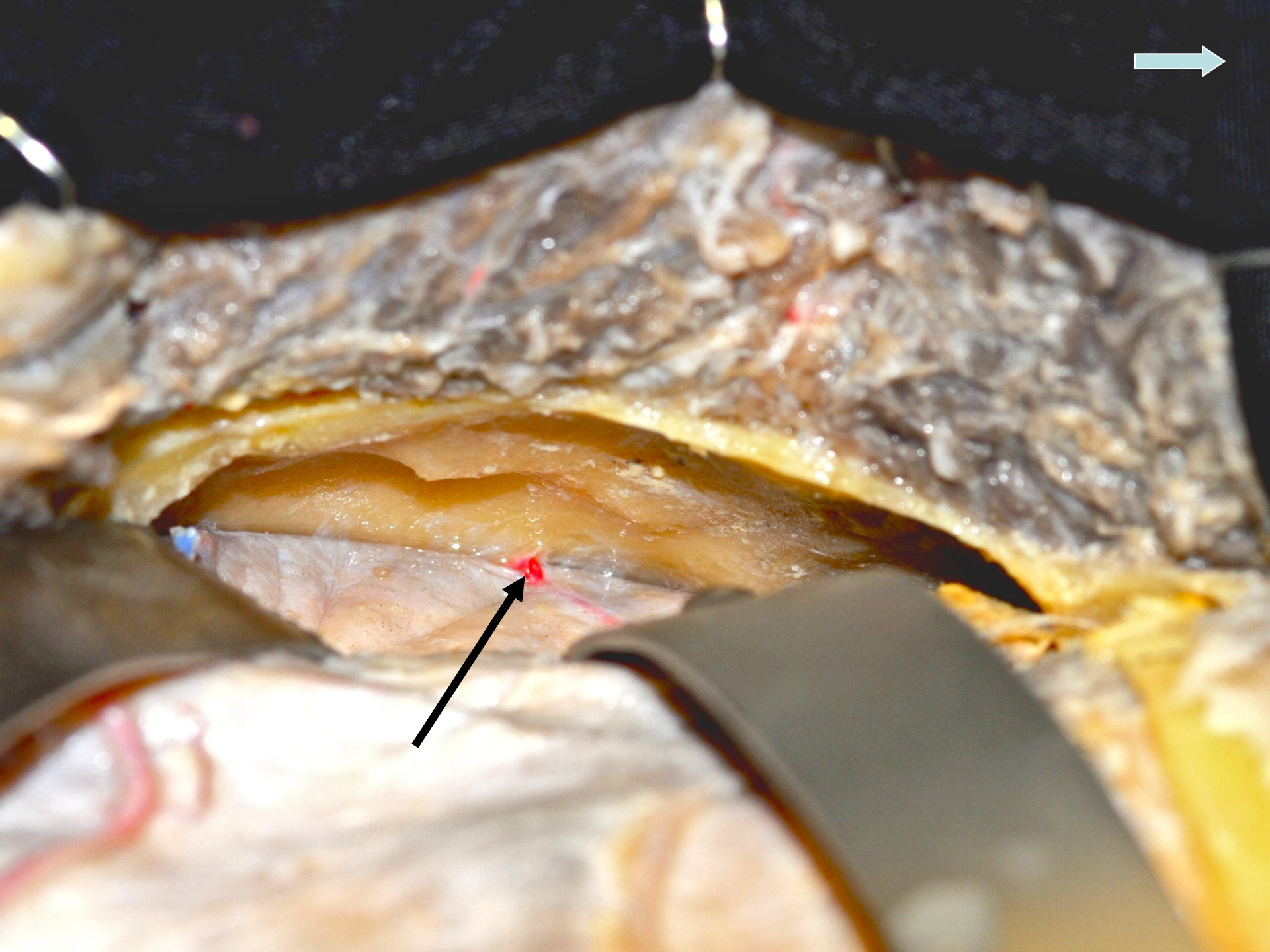




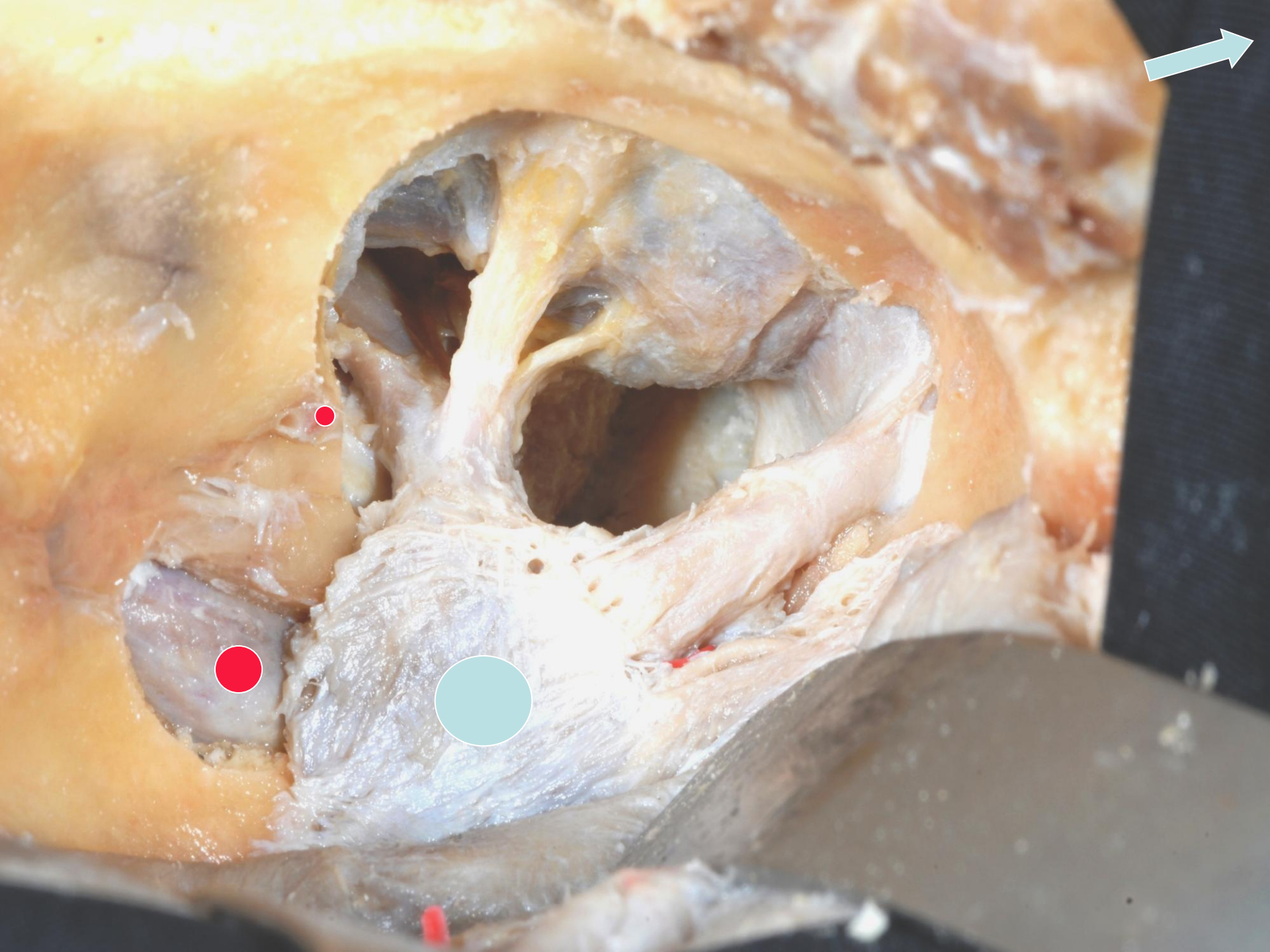




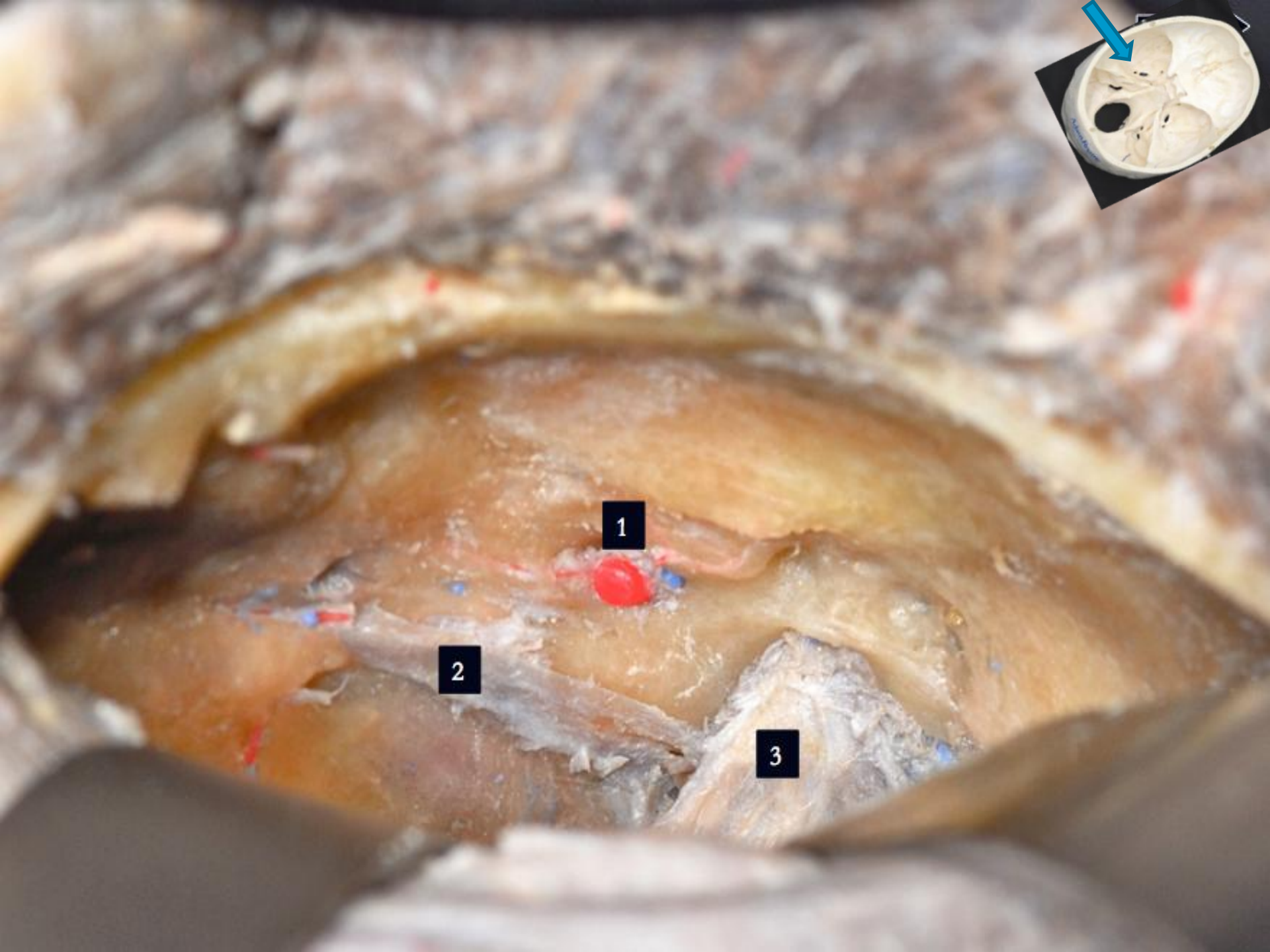
# ΜΕΣΟΣ ΚΡΑΝΙΑΚΟΣ ΒΟΘΡΟΣ

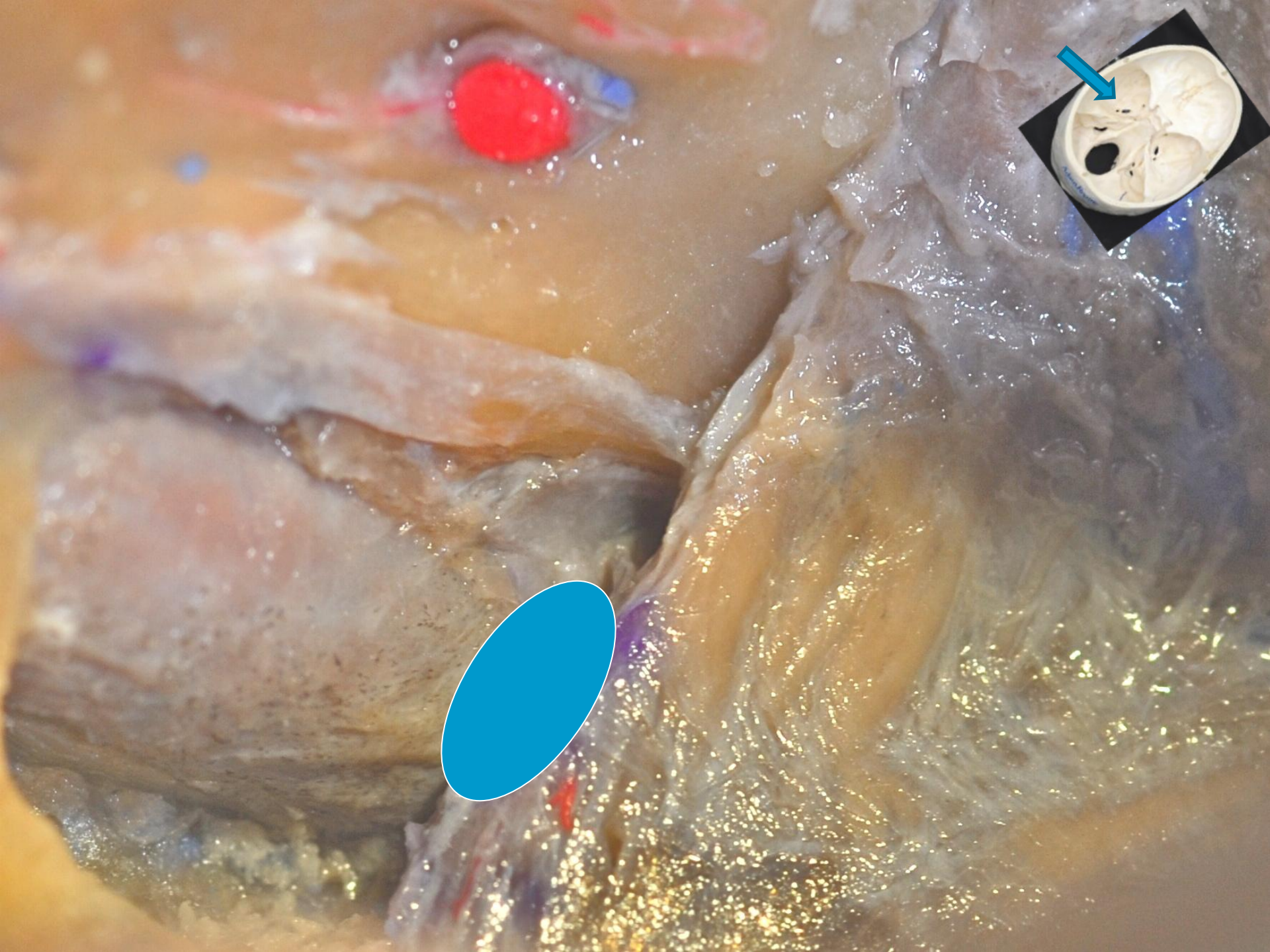








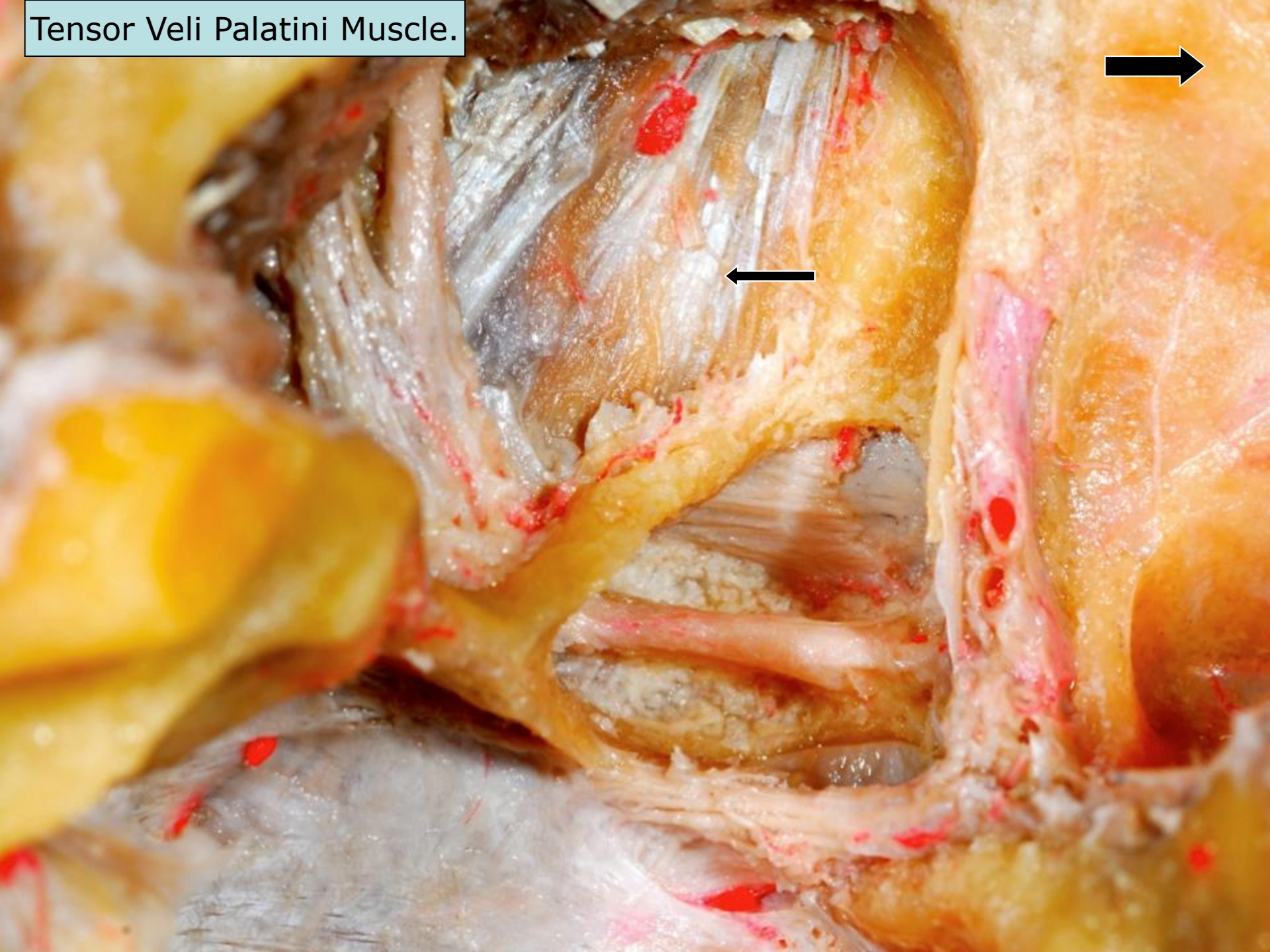


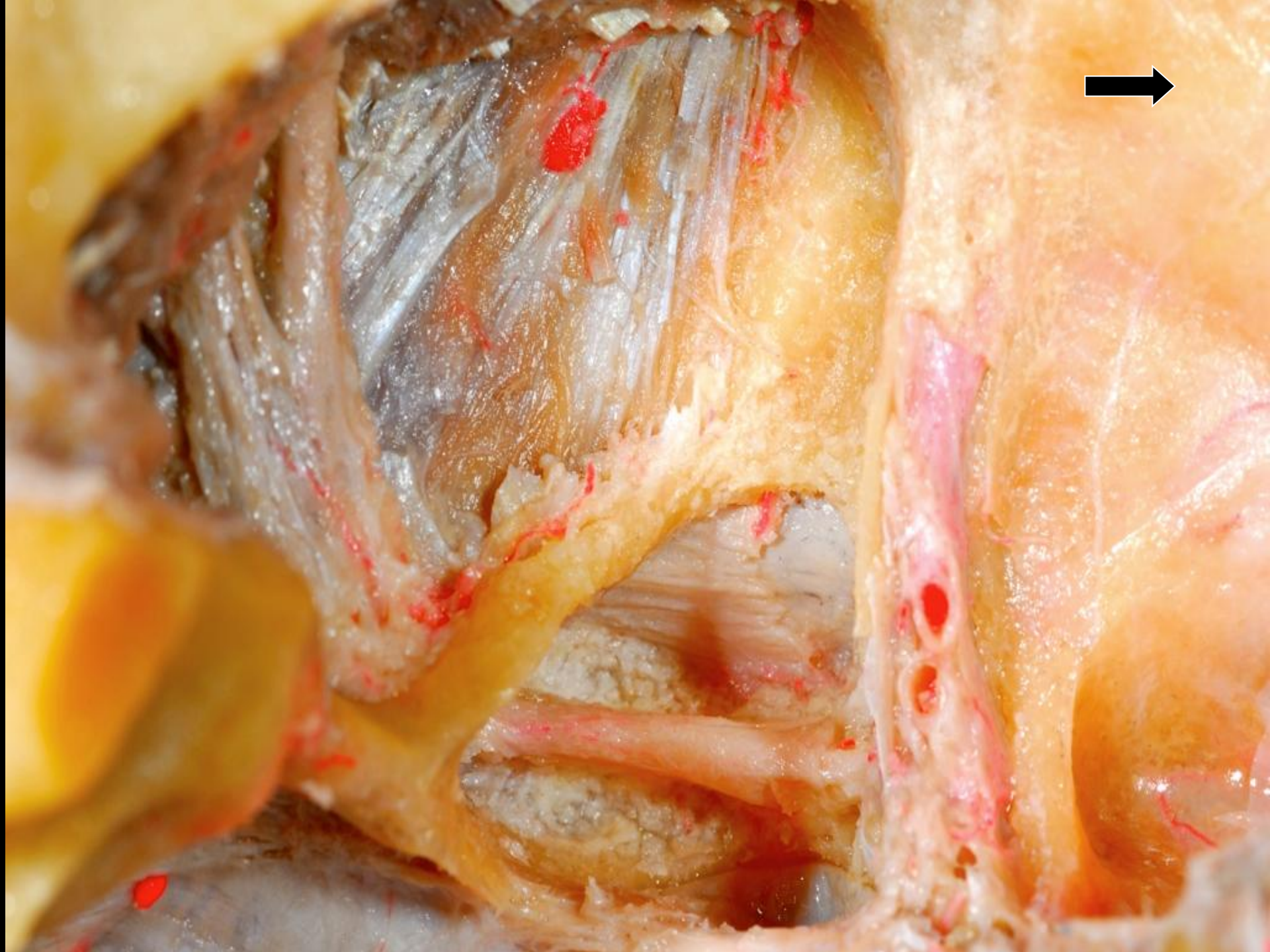


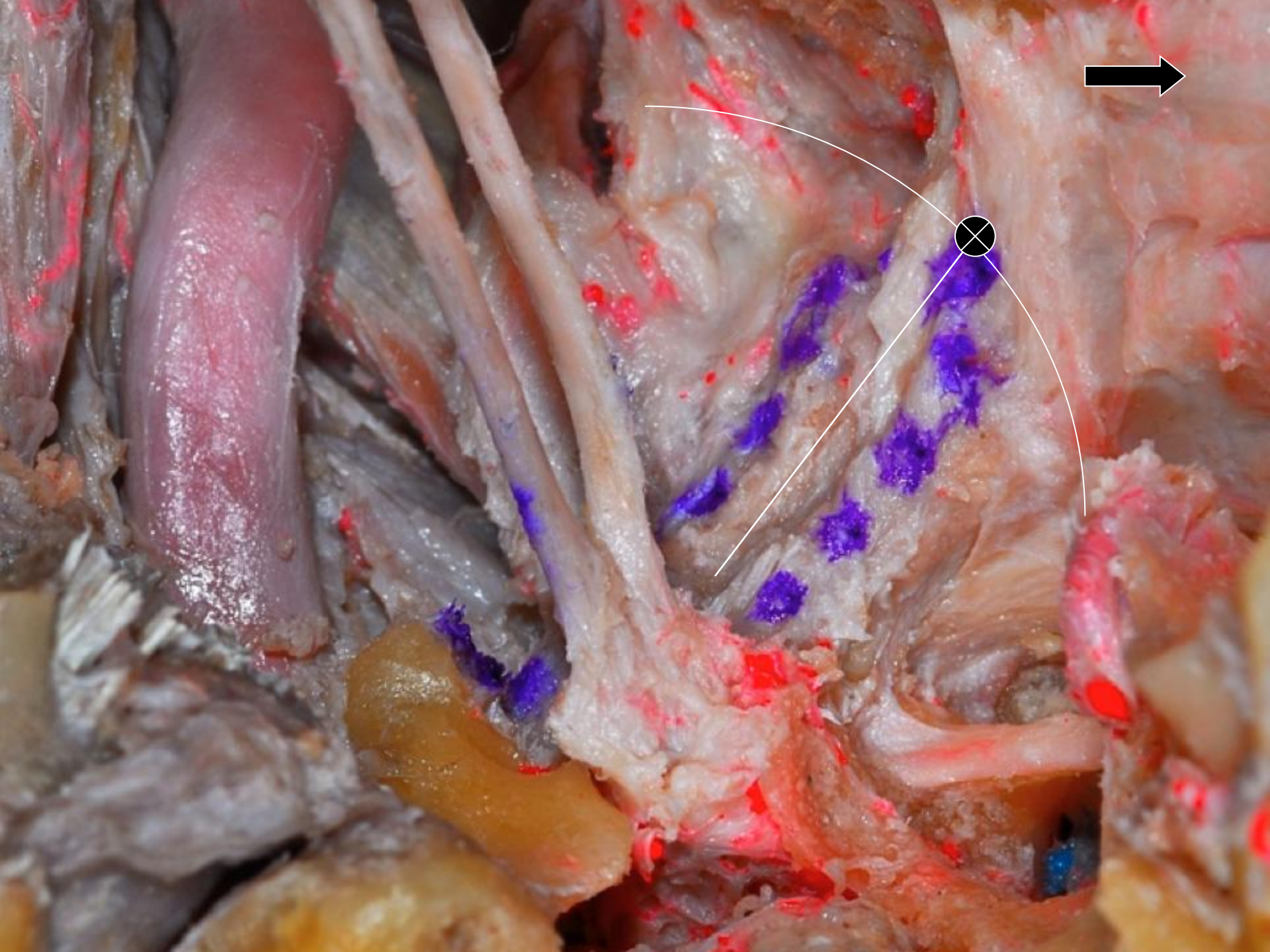




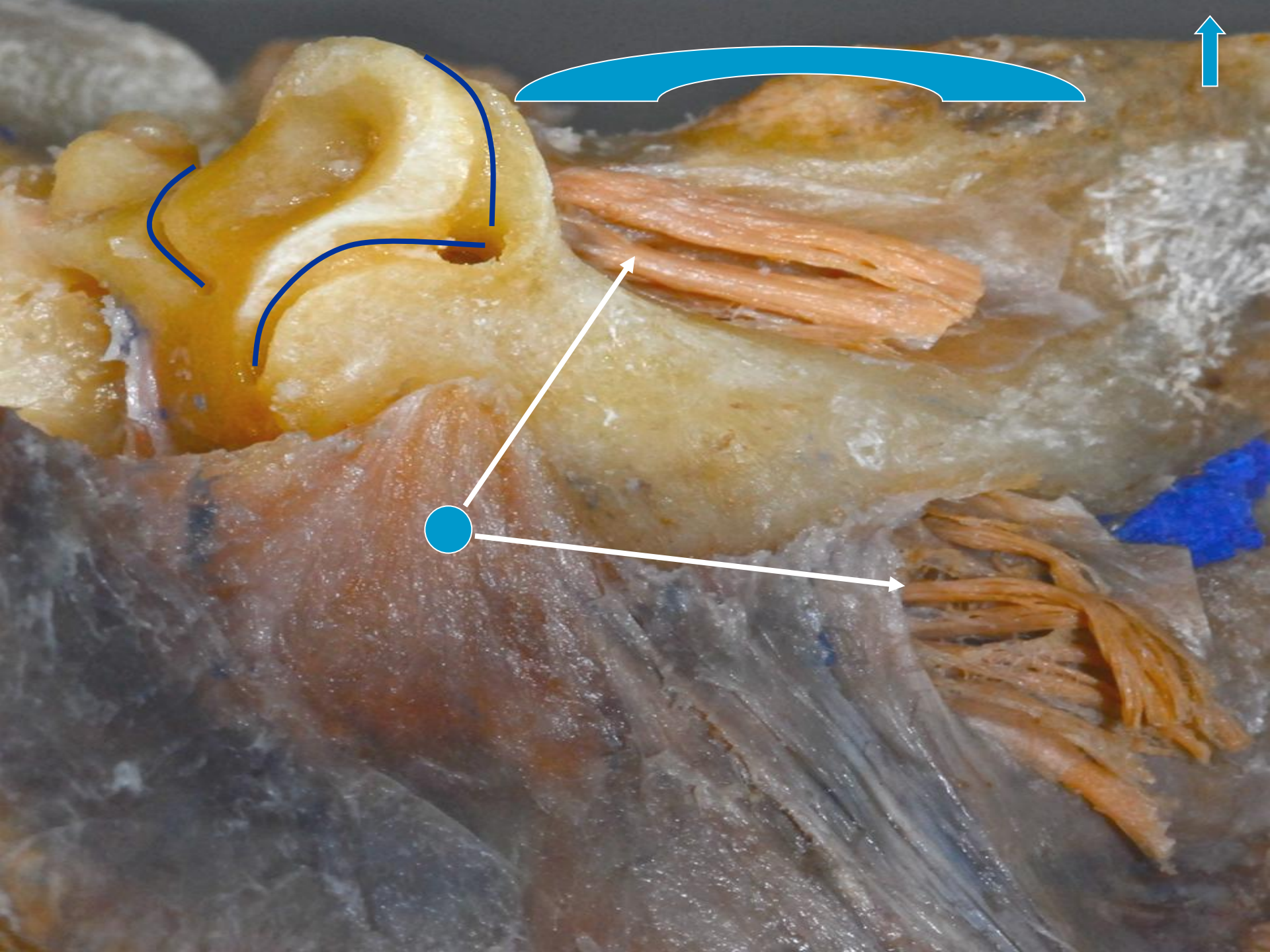
Tensor Veli Palatini Muscle.

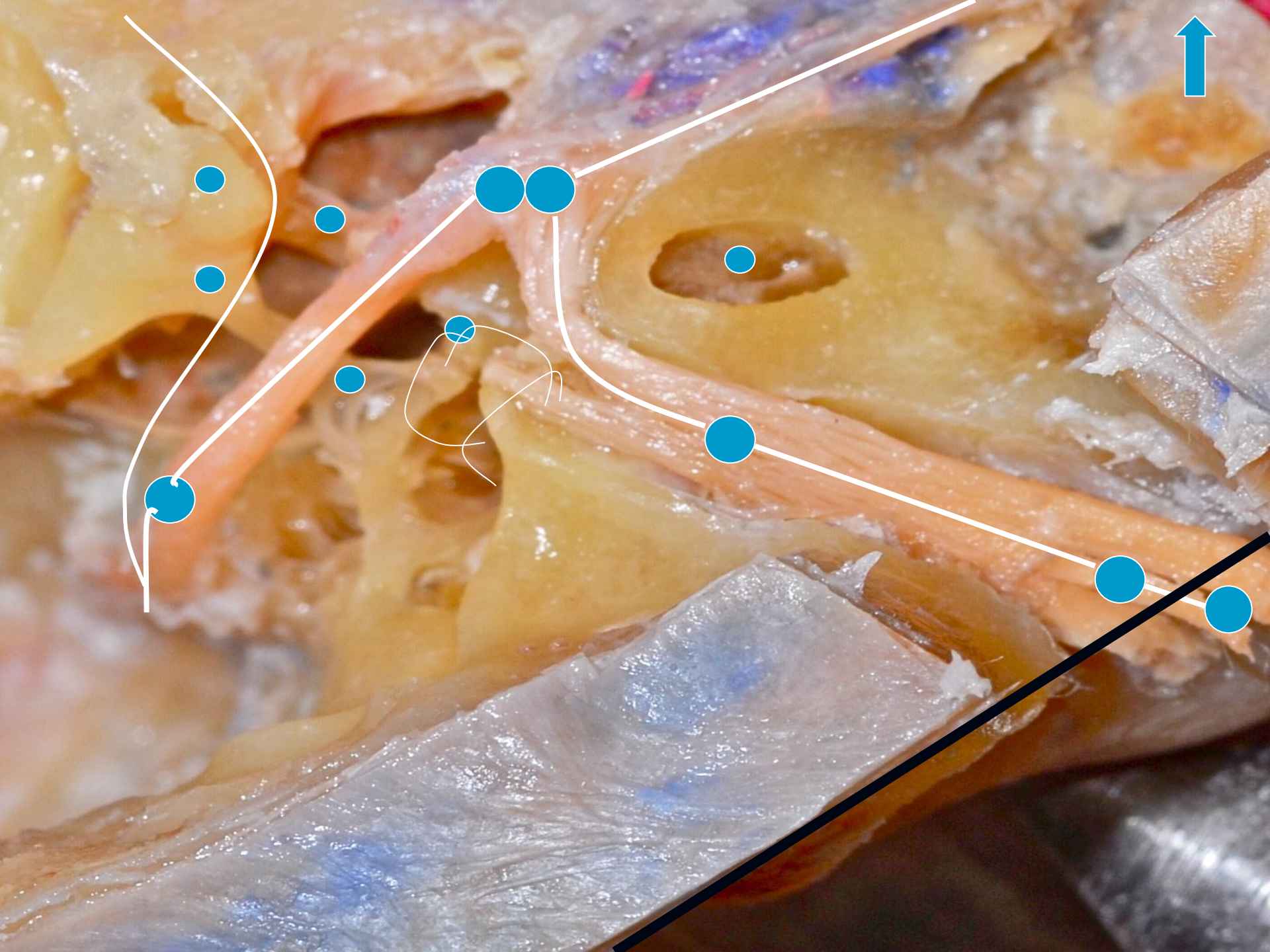




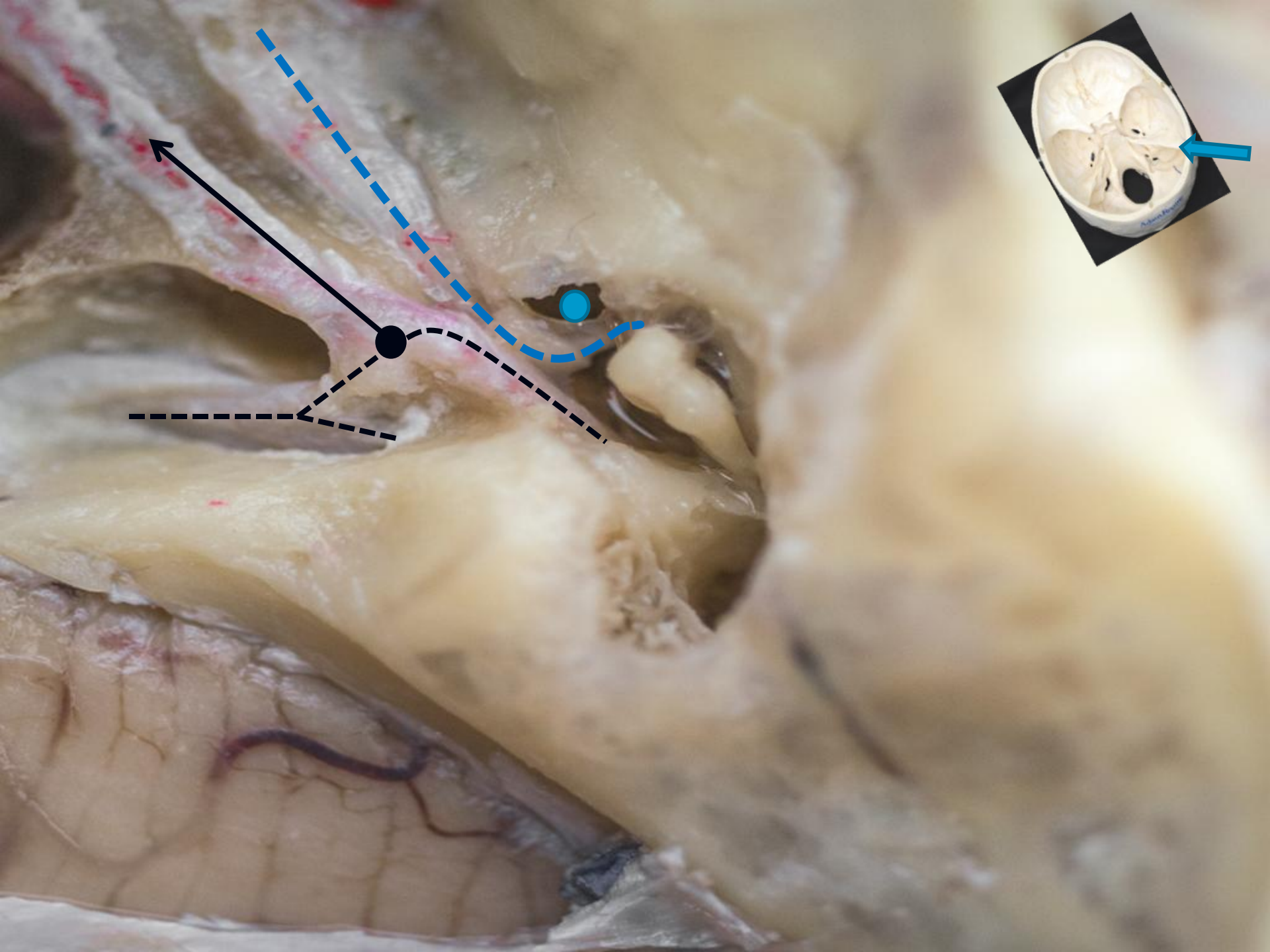


ΛΙΘΟΕΙΔΕΣ ΟΣΤΟ



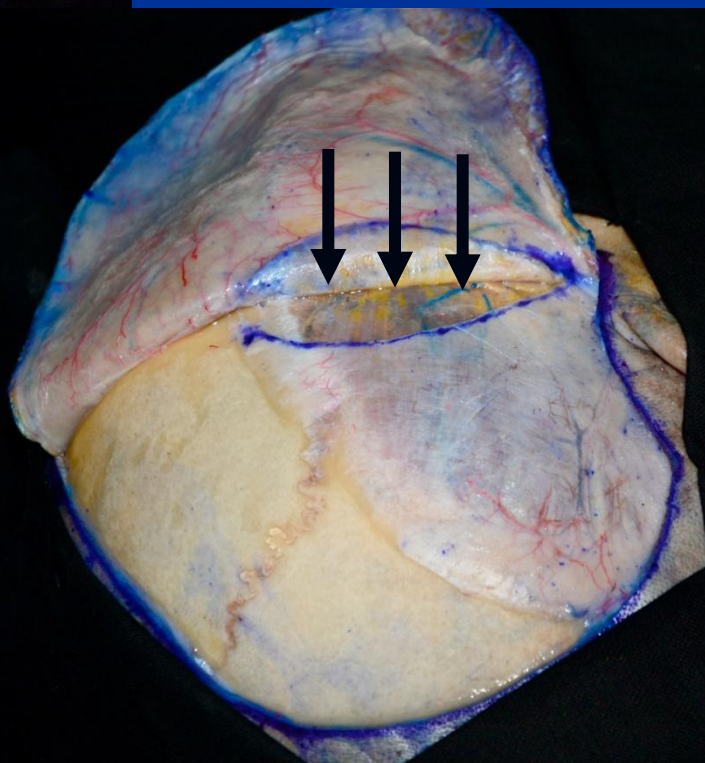
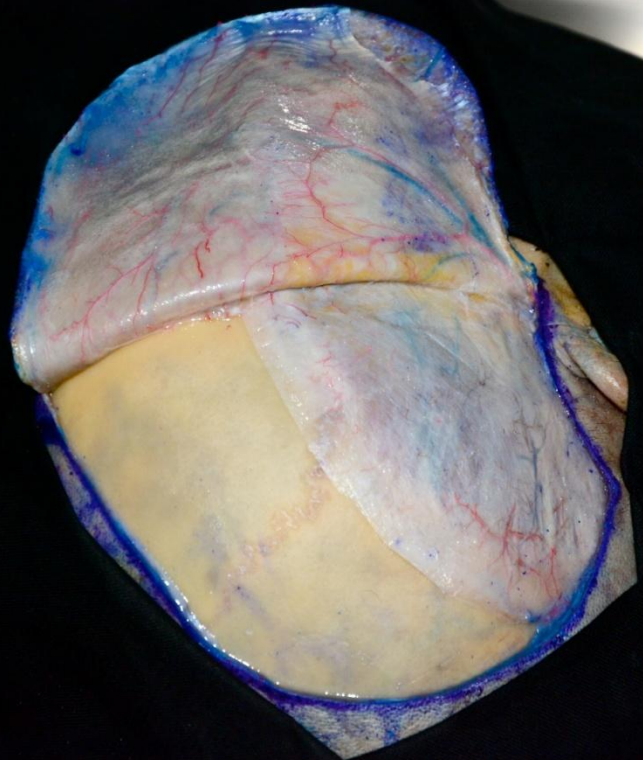


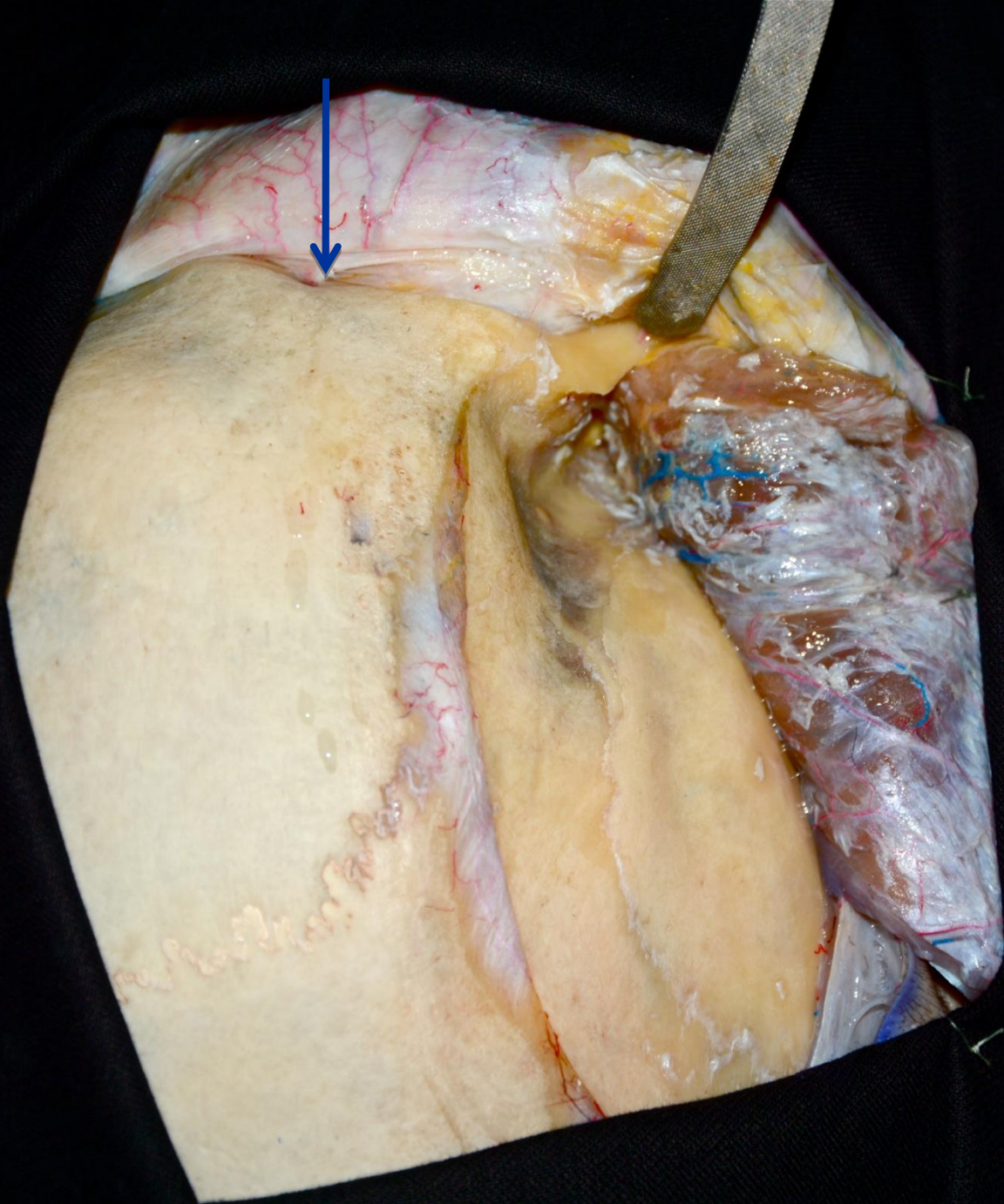






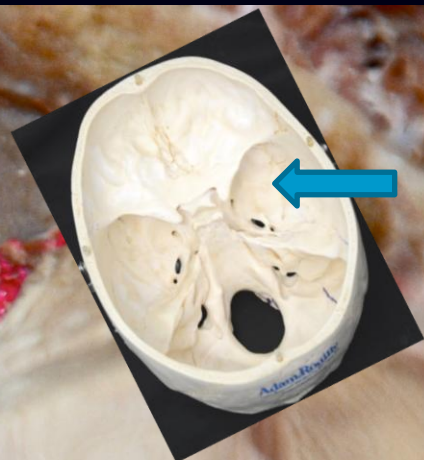
# ΣΗΡΑΓΓΩΔΗΣ ΚΟΛΠΟΣ



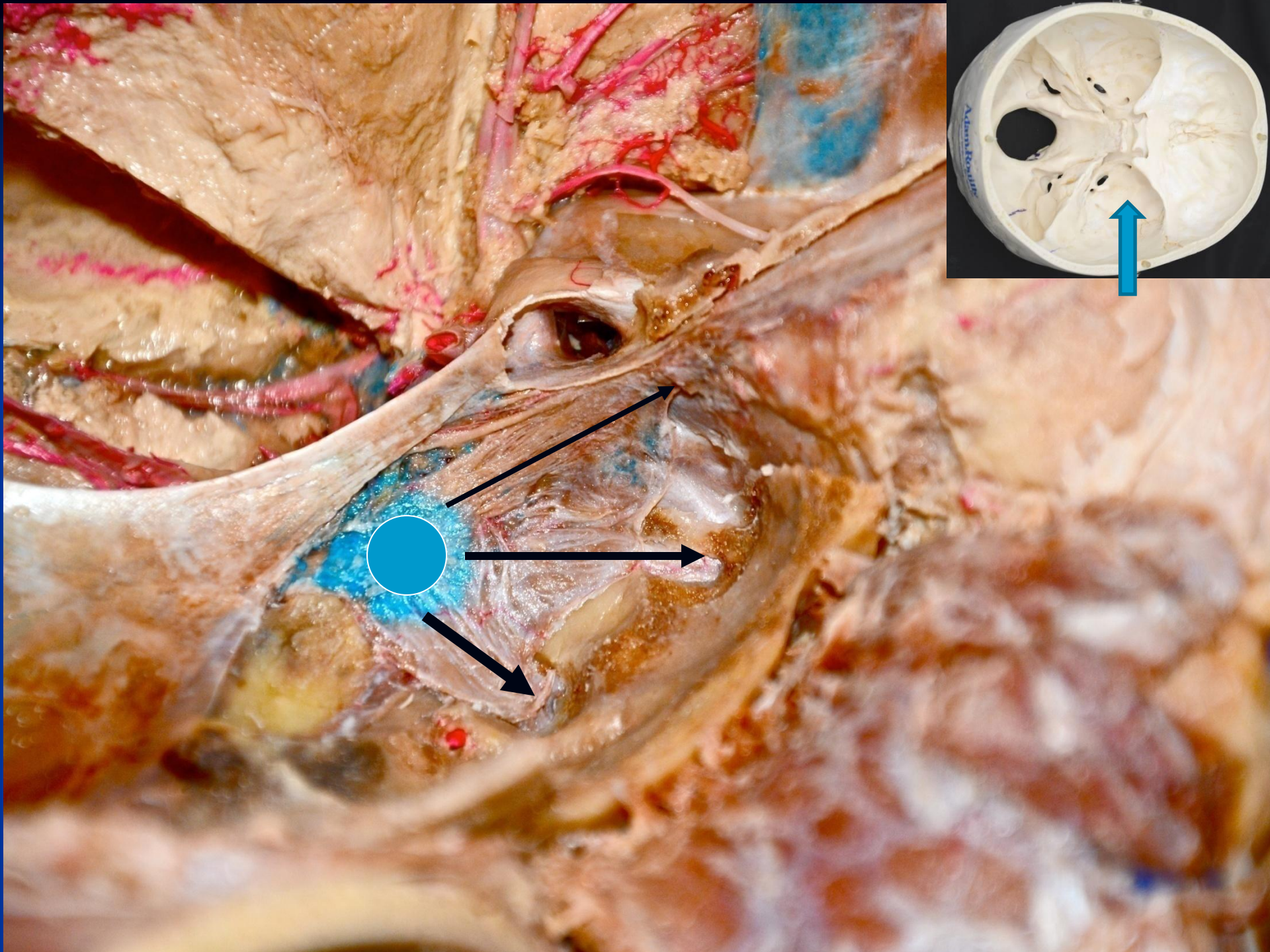




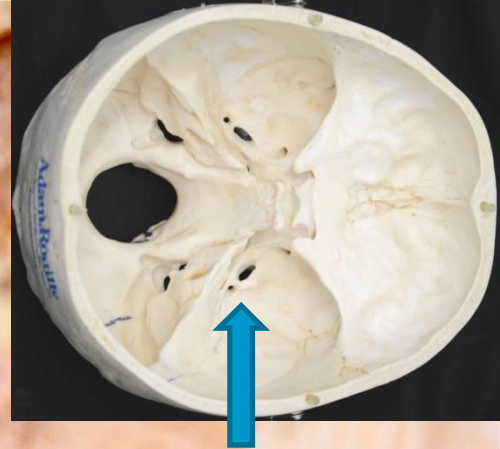
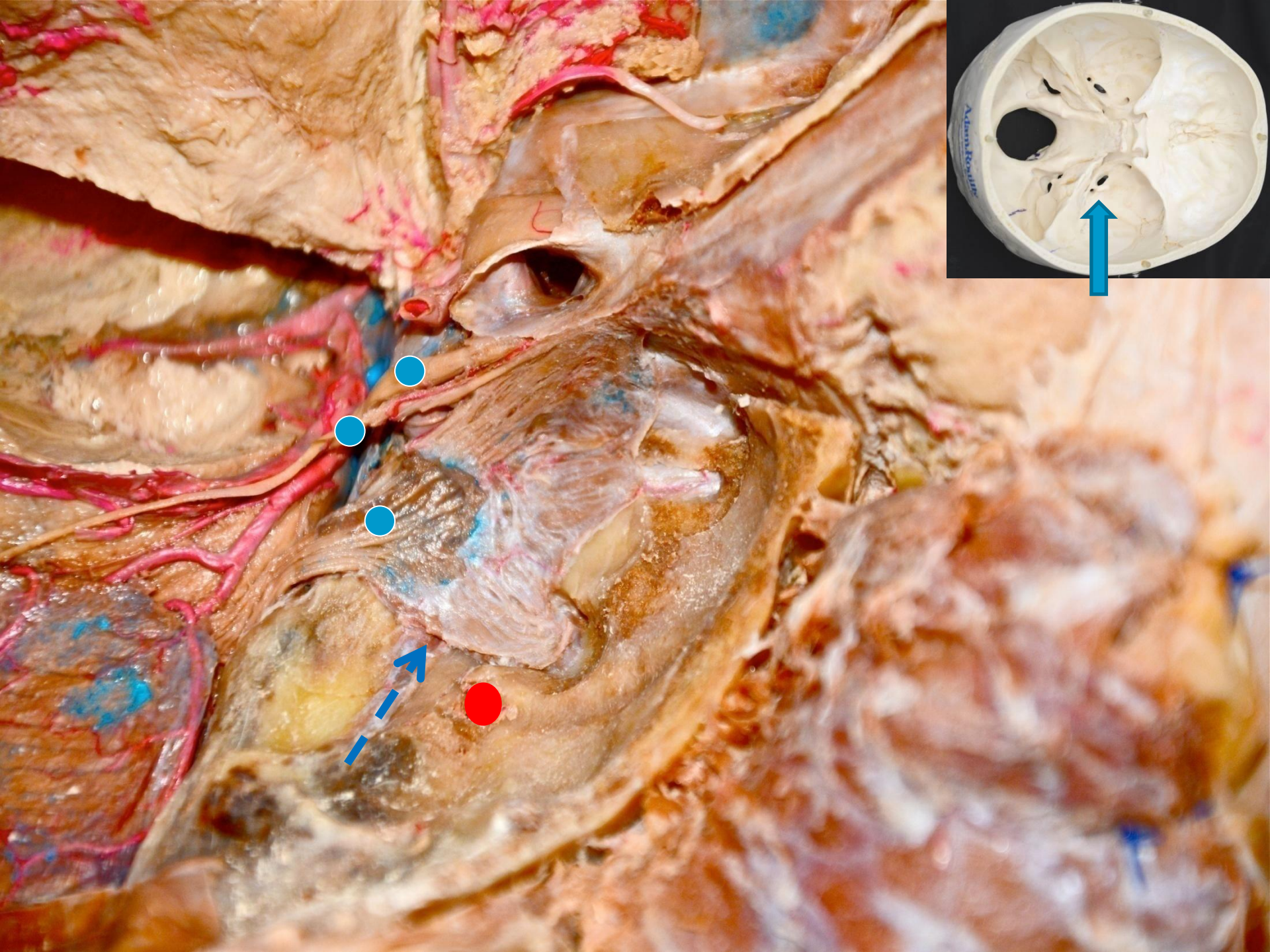


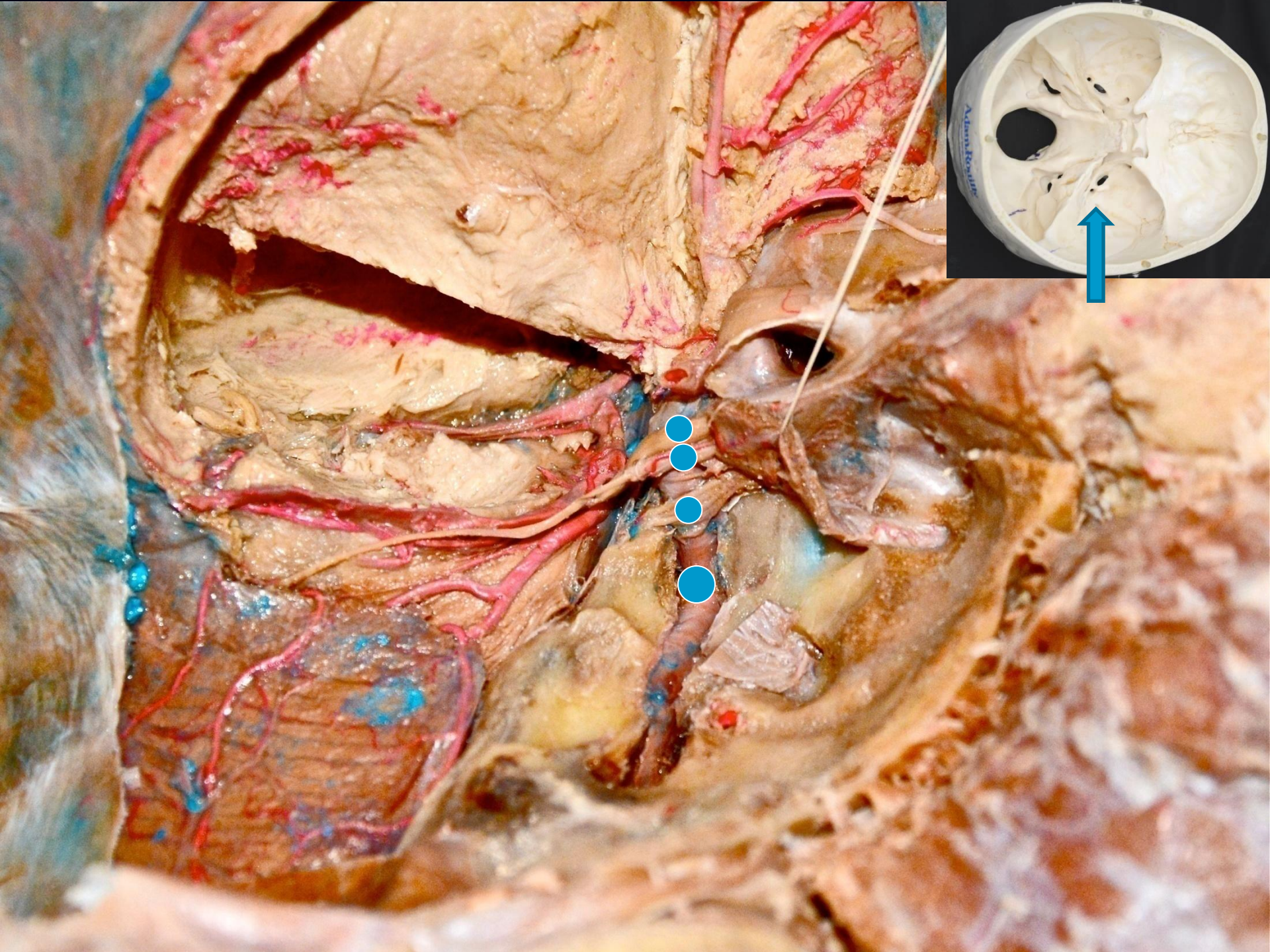


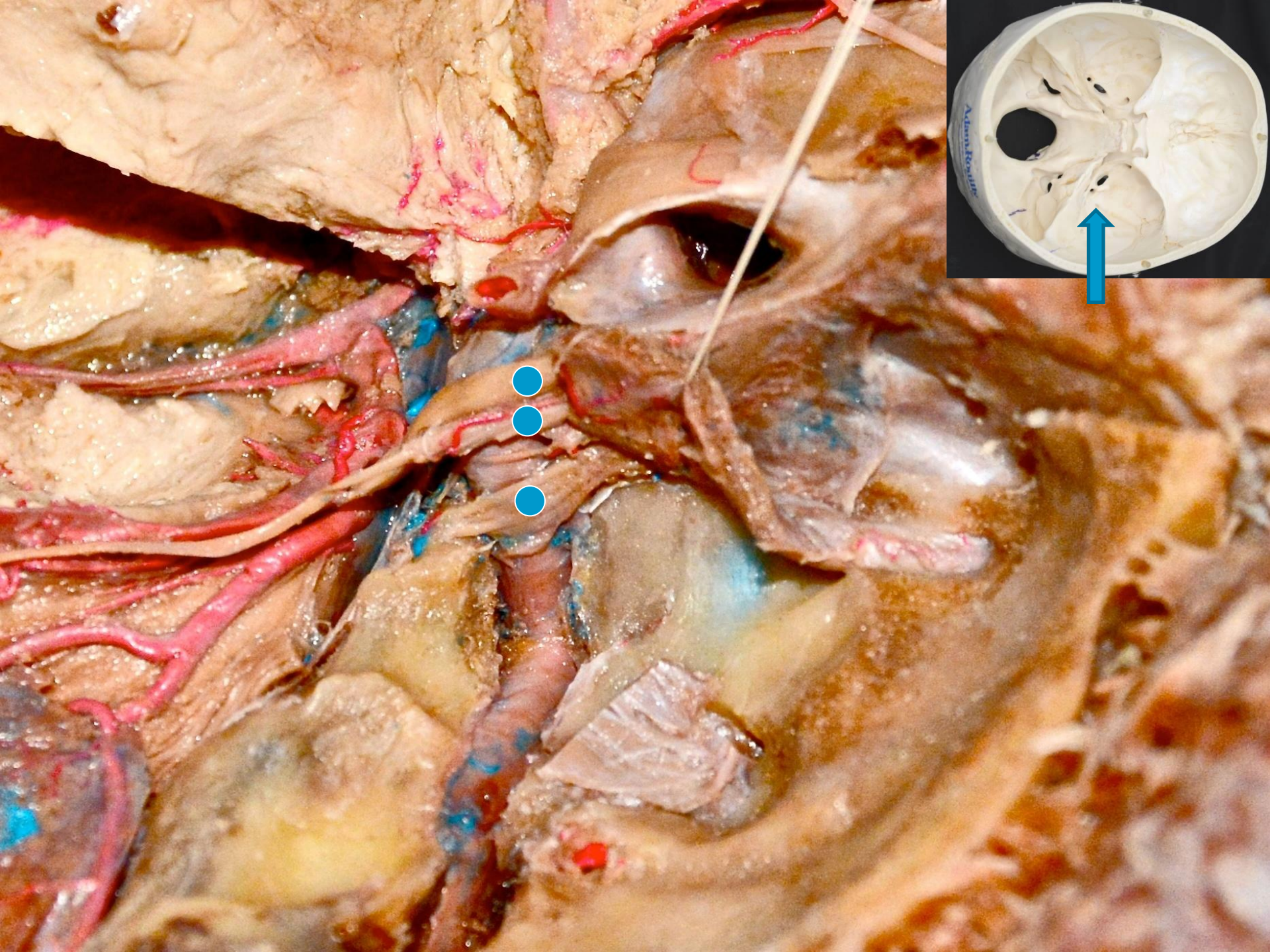


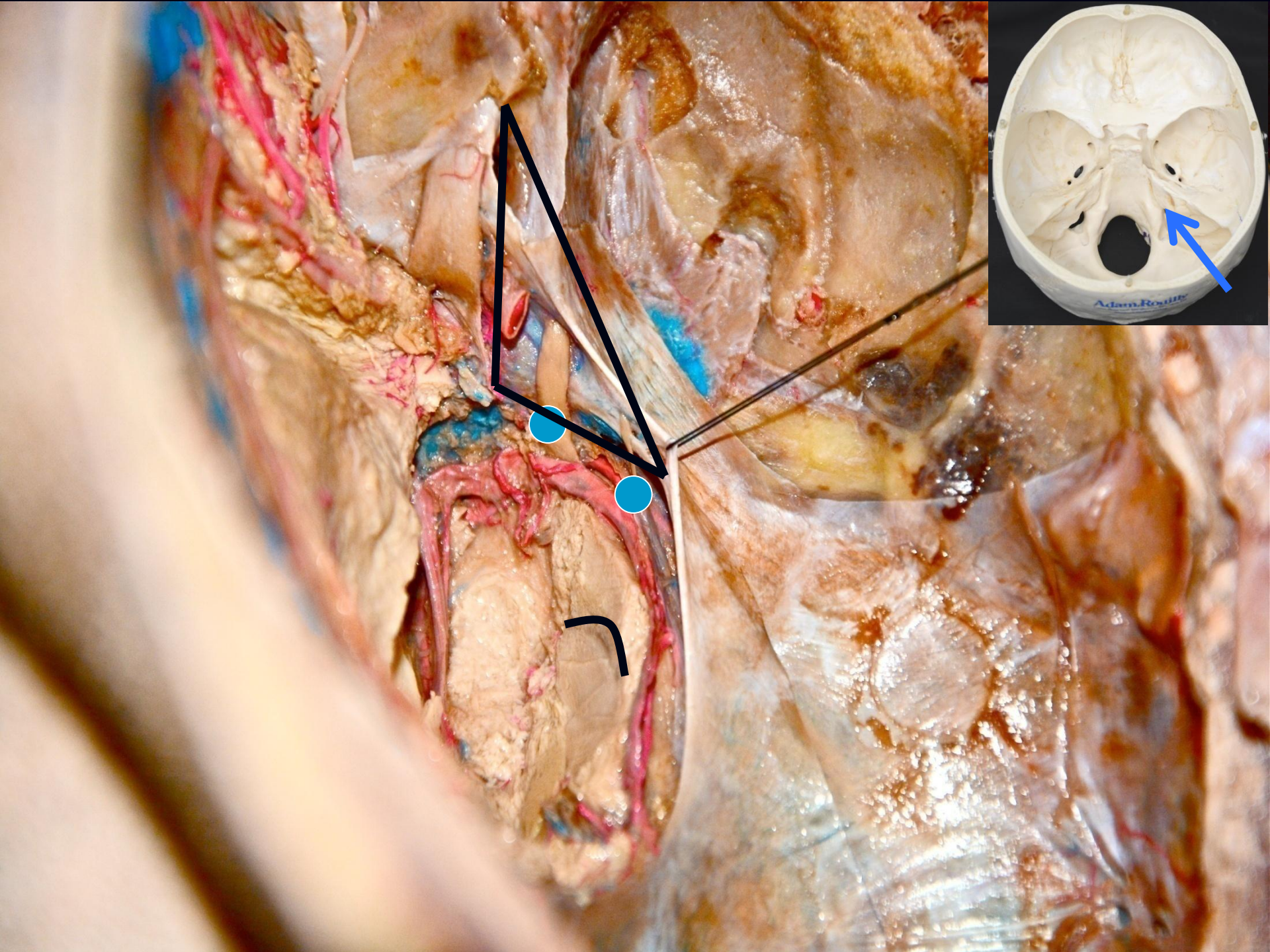


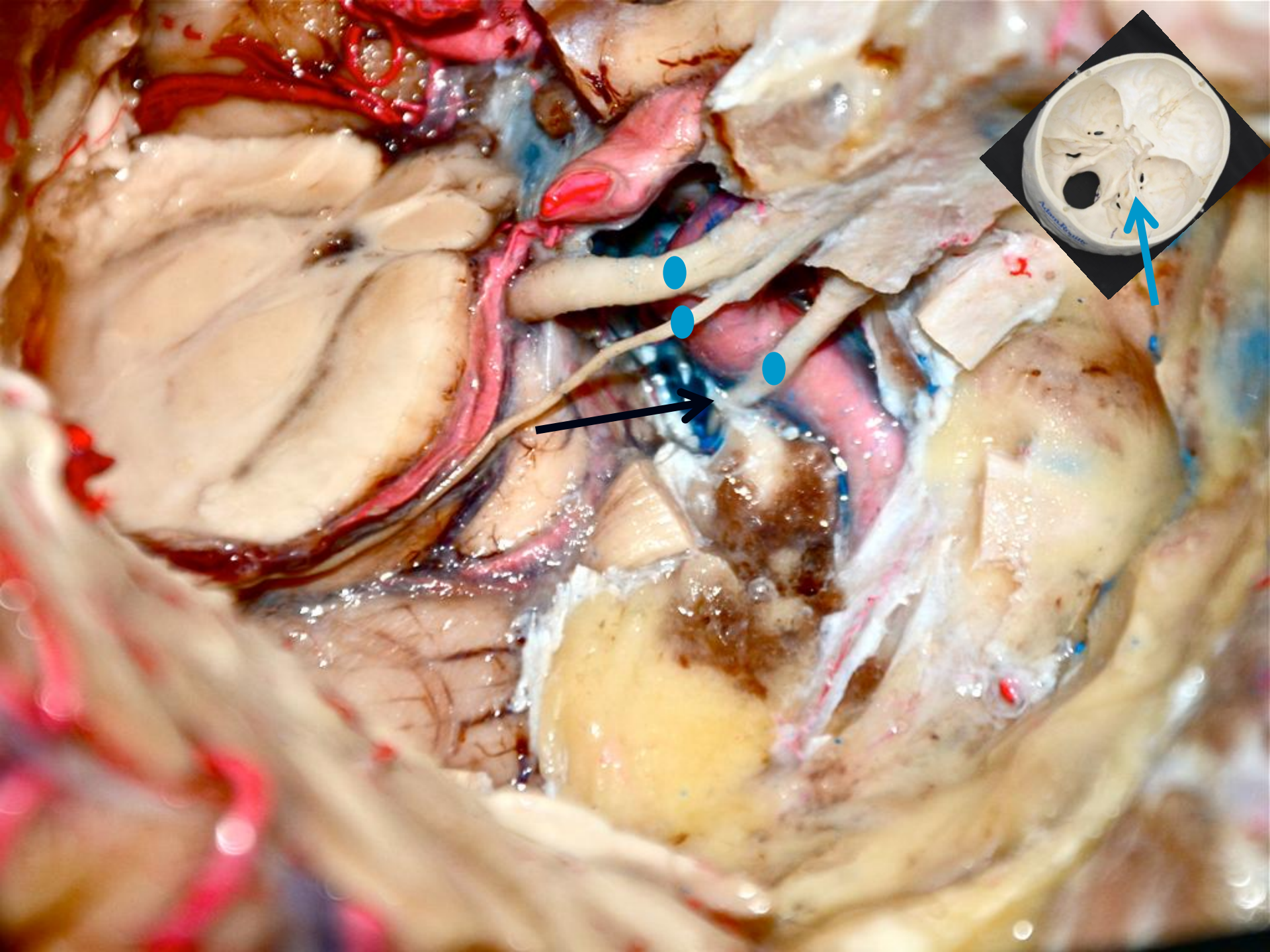


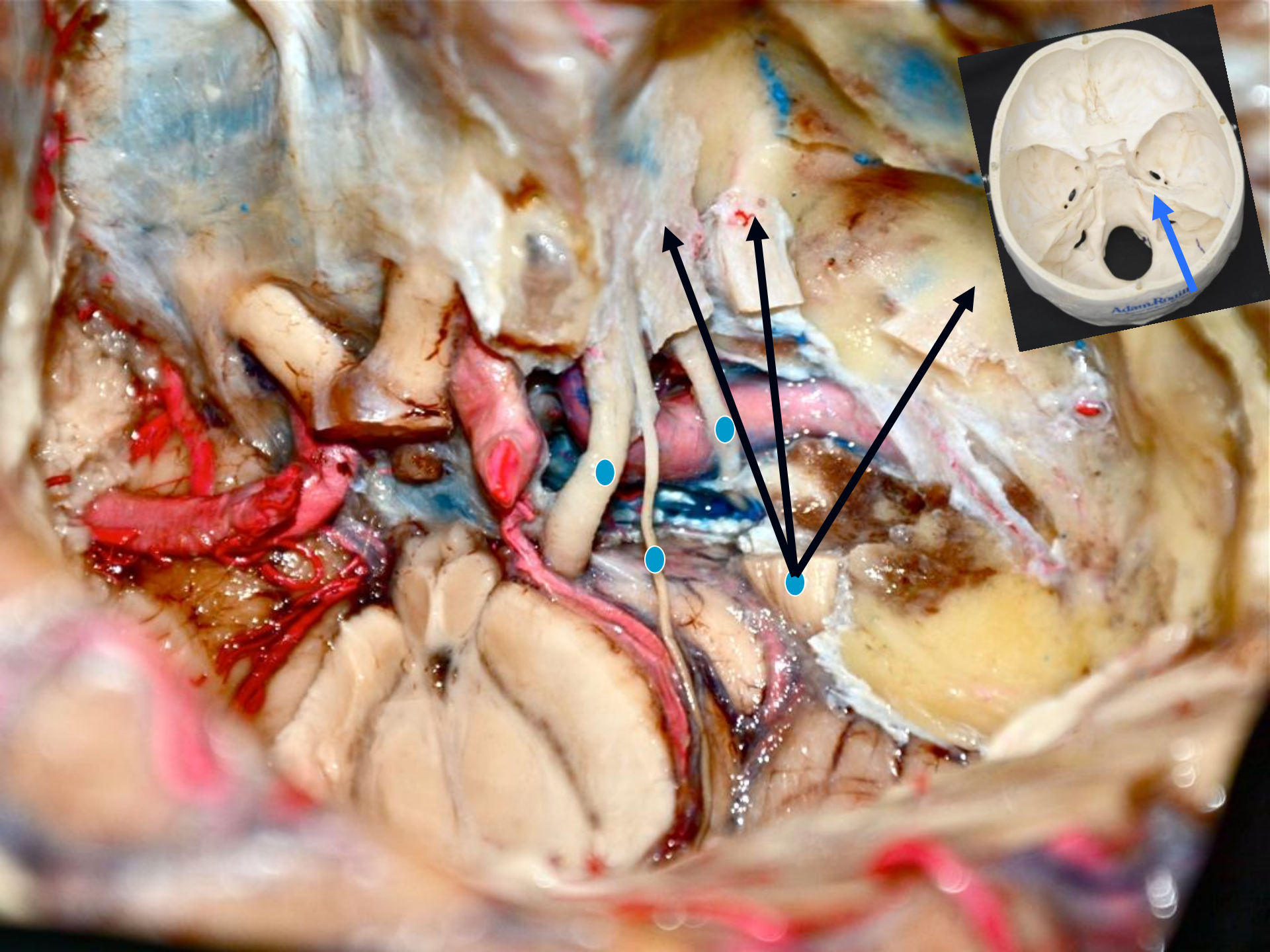


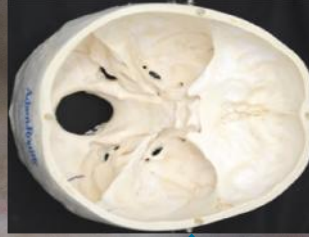
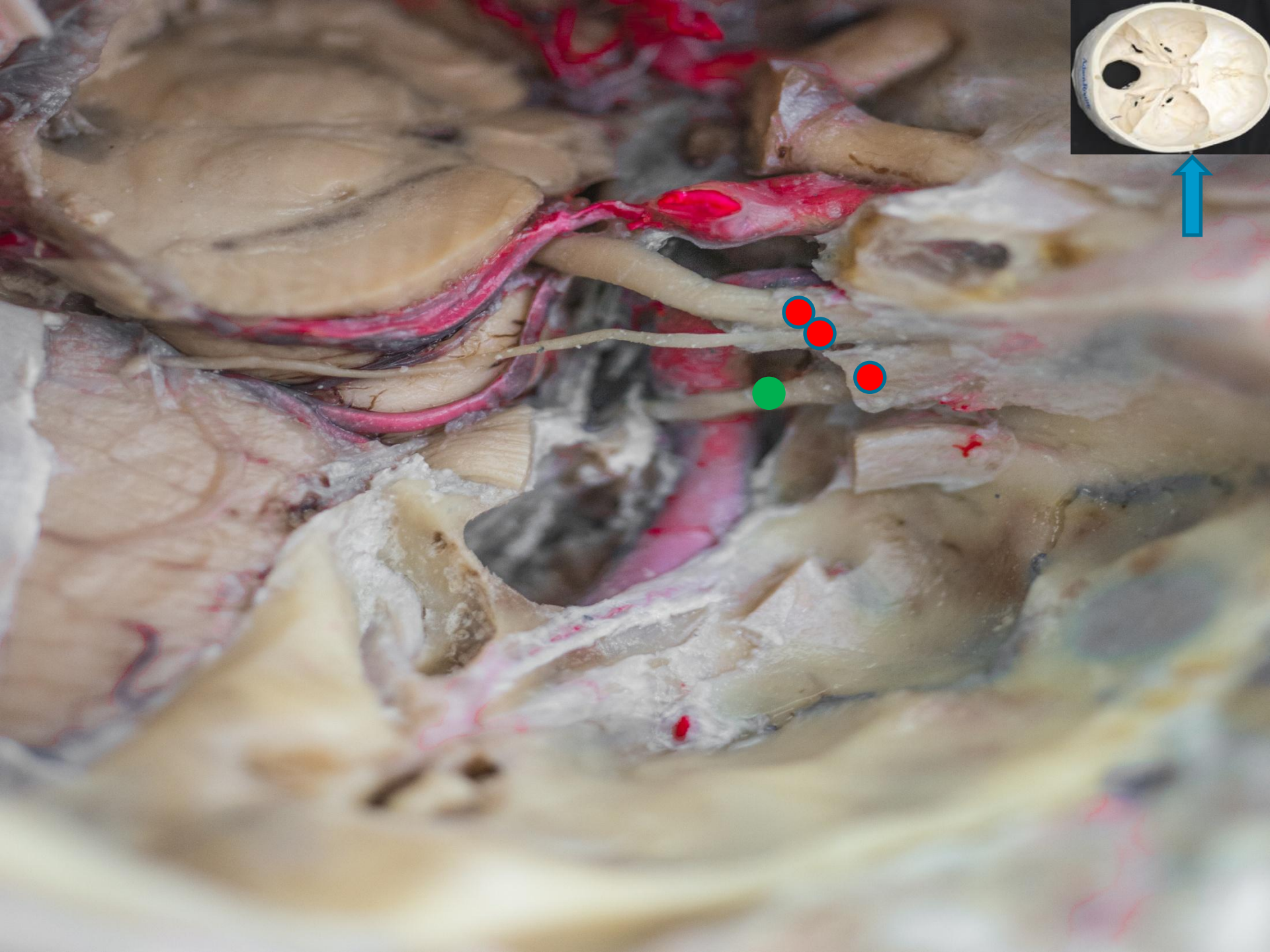


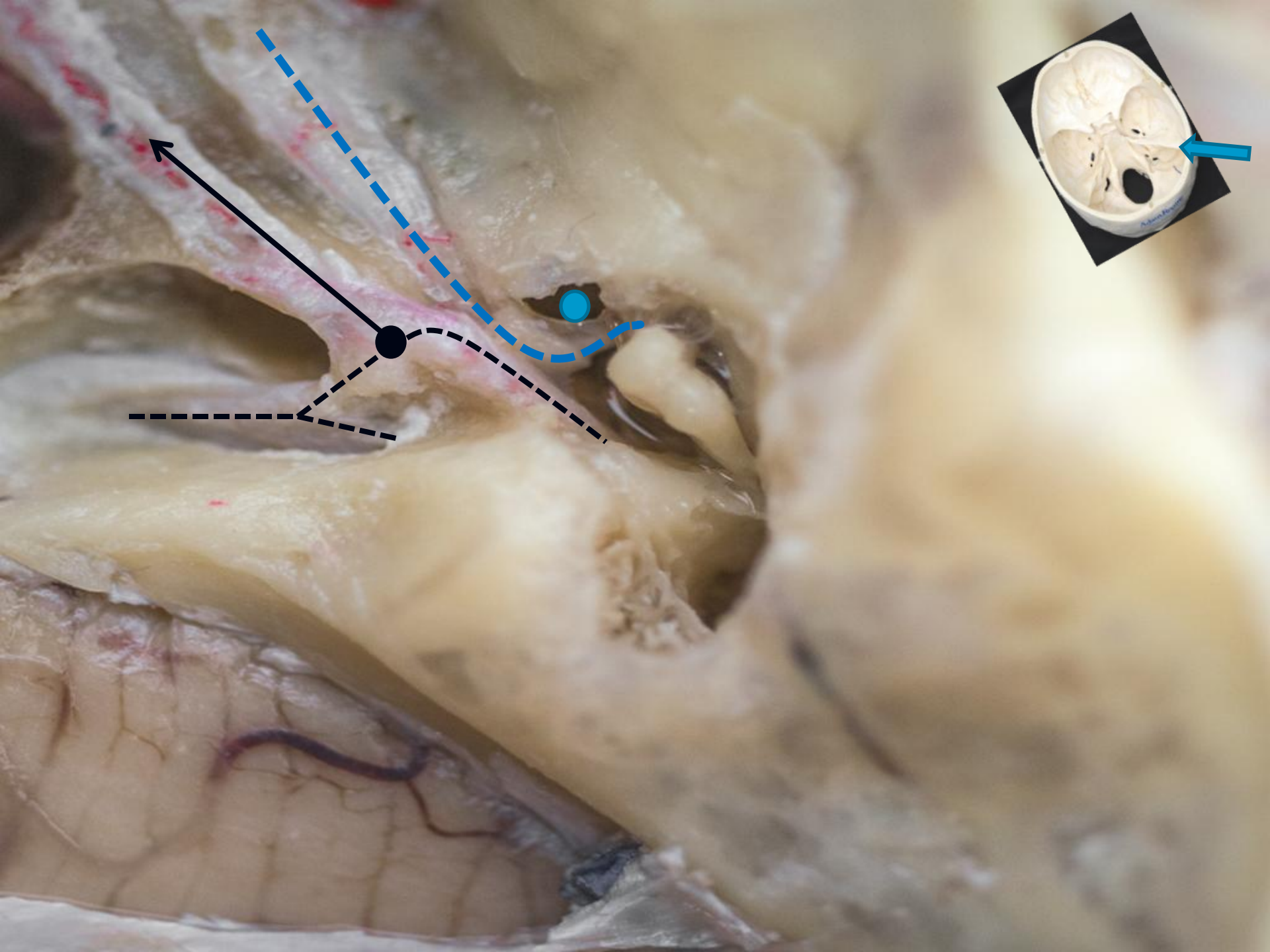




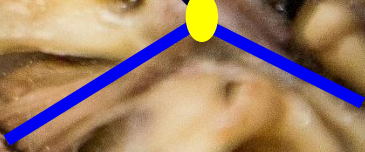
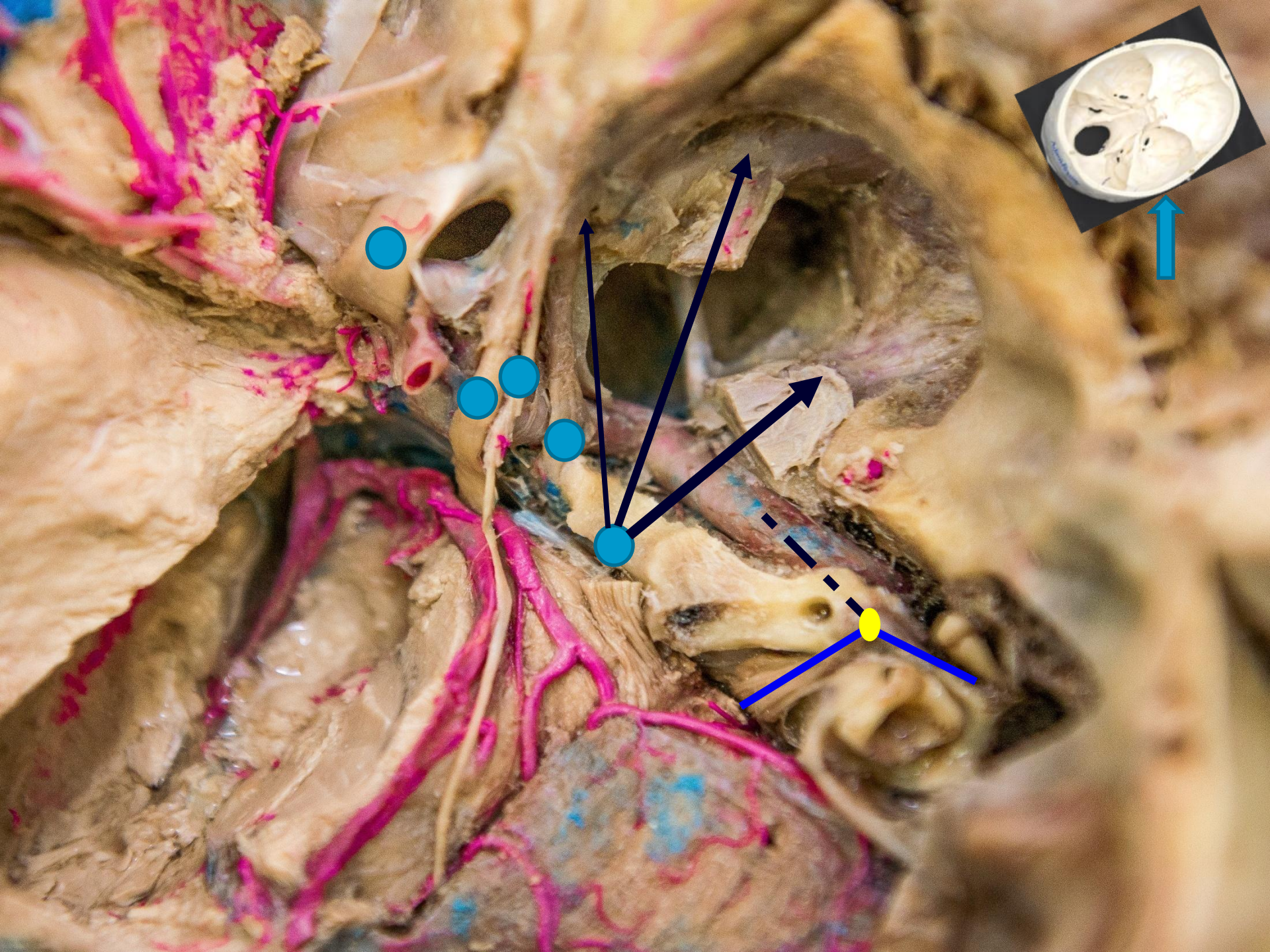














**ΕΥΧΑΡΙΣΤΩ ΠΟΛΥ ΓΙΑ ΤΗΝ  
ΠΡΟΣΟΧΗ ΣΑΣ**