

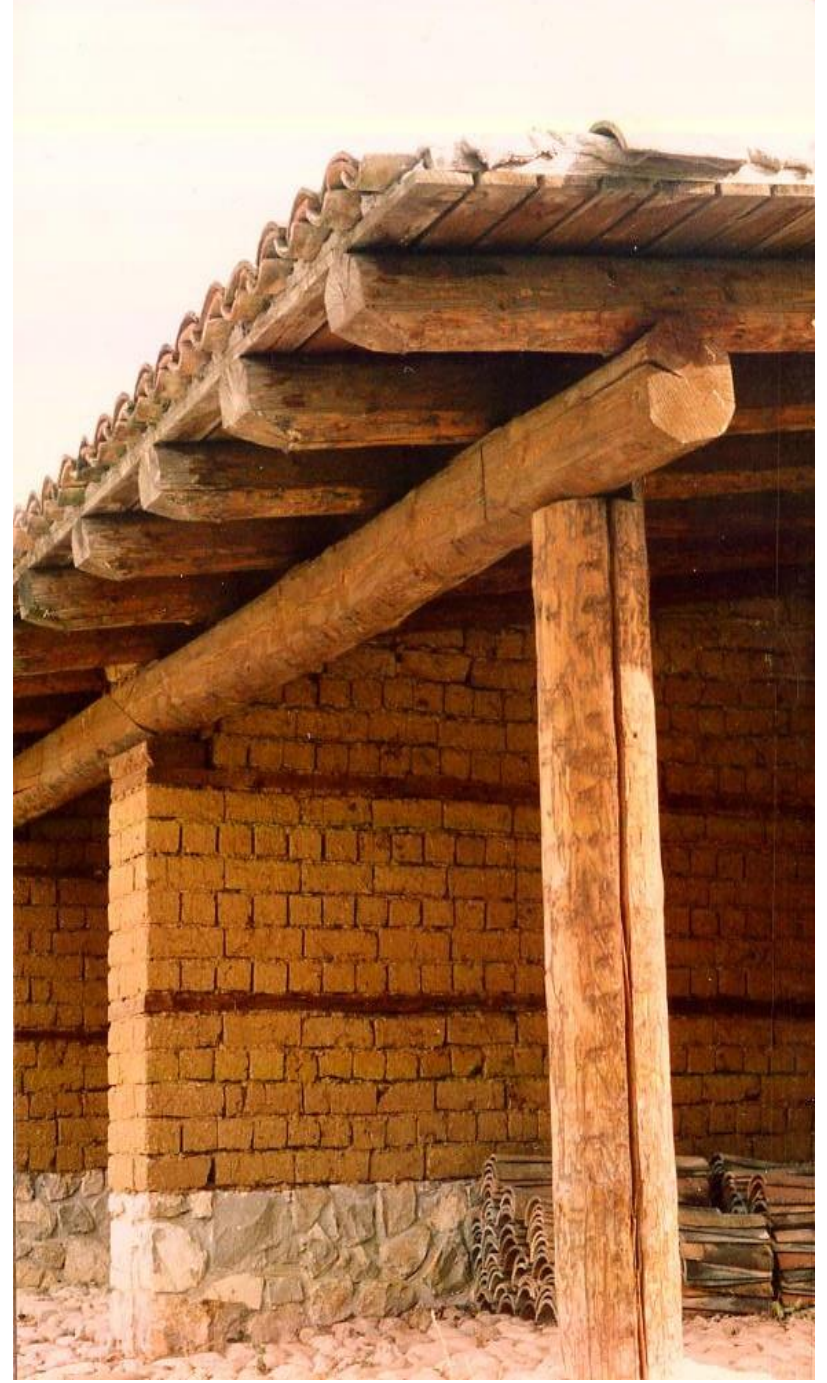
THE GREEK HOUSE

- CLASSICAL HOUSES WERE SMALL, HUMBLE STRUCTURES
- SOCIAL LIFE (FOR MEN) WAS PUBLIC. HOUSES FOR WOMEN, SLAVES, CHILDREN, PETS
- CITIZEN – IDIOT!
- FOREIGNERS IN ATHENS WONDERED WHERE THE FAMOUS CITY OF ATHENS WAS !. DEMOSTHENES.
- ROMAN COLONNADES IN THE ATHENIAN AGORA

MUDBRICK WALL

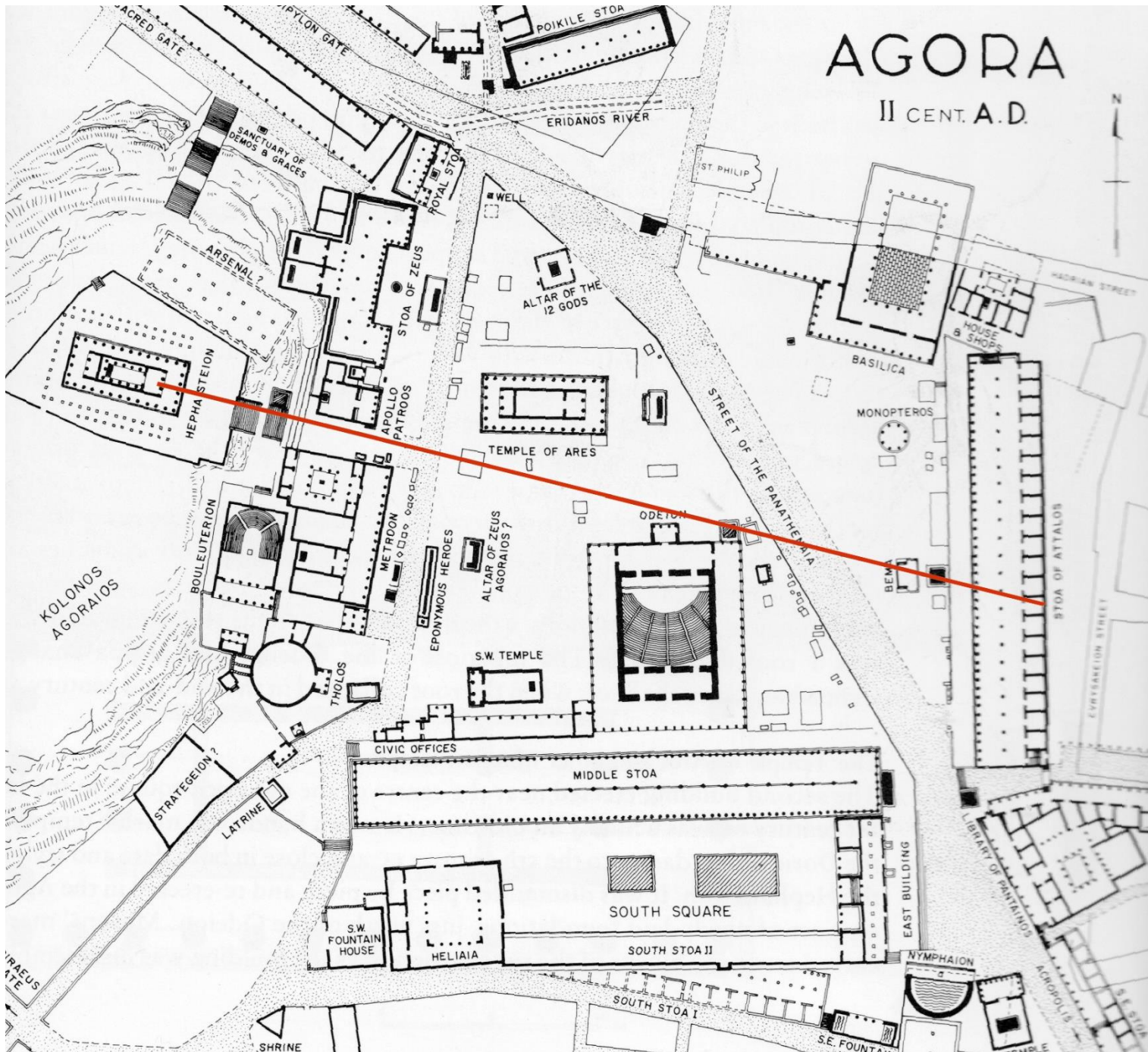






AGORA

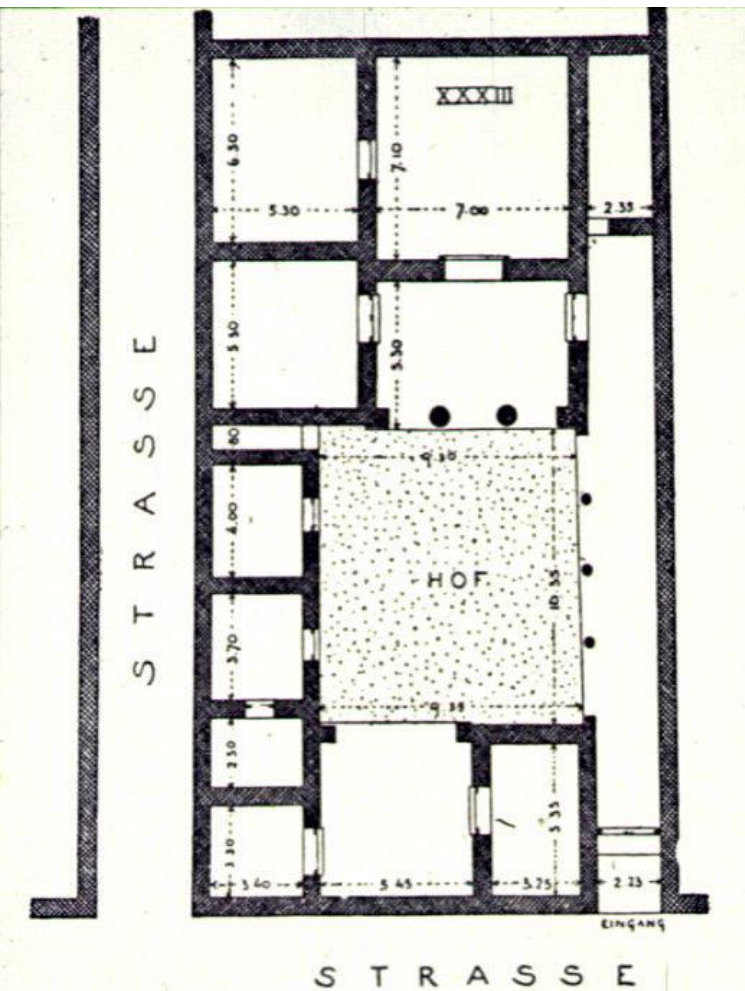
II CENT. A.D.



SPACES- TERMINOLOGY

- ANDRON- PROSTAS – DINING ROOM
- WOMEN’S PLACE IN THE UPPER FLOOR
- **SEGREGATION**
- COURTYARD – THE LARGEST UNIT
- PASTAS-OIKOS = LIVING ROOM
- ΔΙΑΙΤΗΘΡΟΝ / SLEEPING QUARTERS
- JAR’S ROOM
- CISTERN - ΚΑΤΑΚΛΕΙΣΤΟΝ
(ΔΕΞΑΜΕΝΗ)

HOUSE IN PRIENE



- *DISTYLE IN ANTIS ANDRON (*ΠΑΣΤΑΔΑ*).
- * DIMENSIONS 17.70 X 23.60 M.

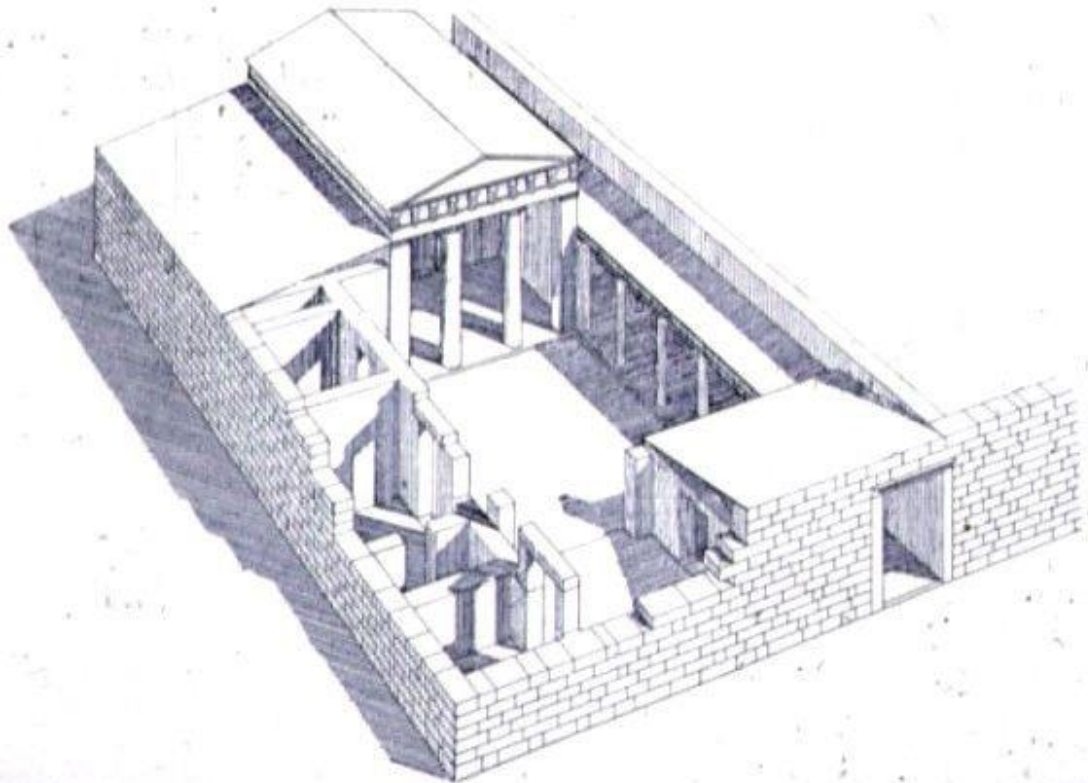
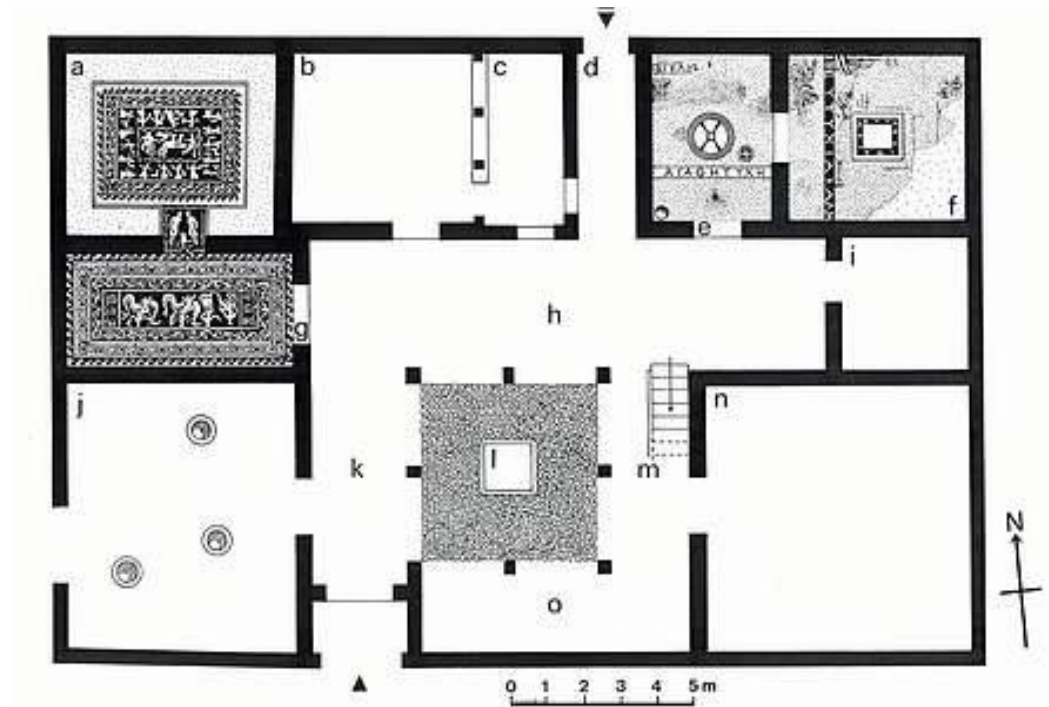


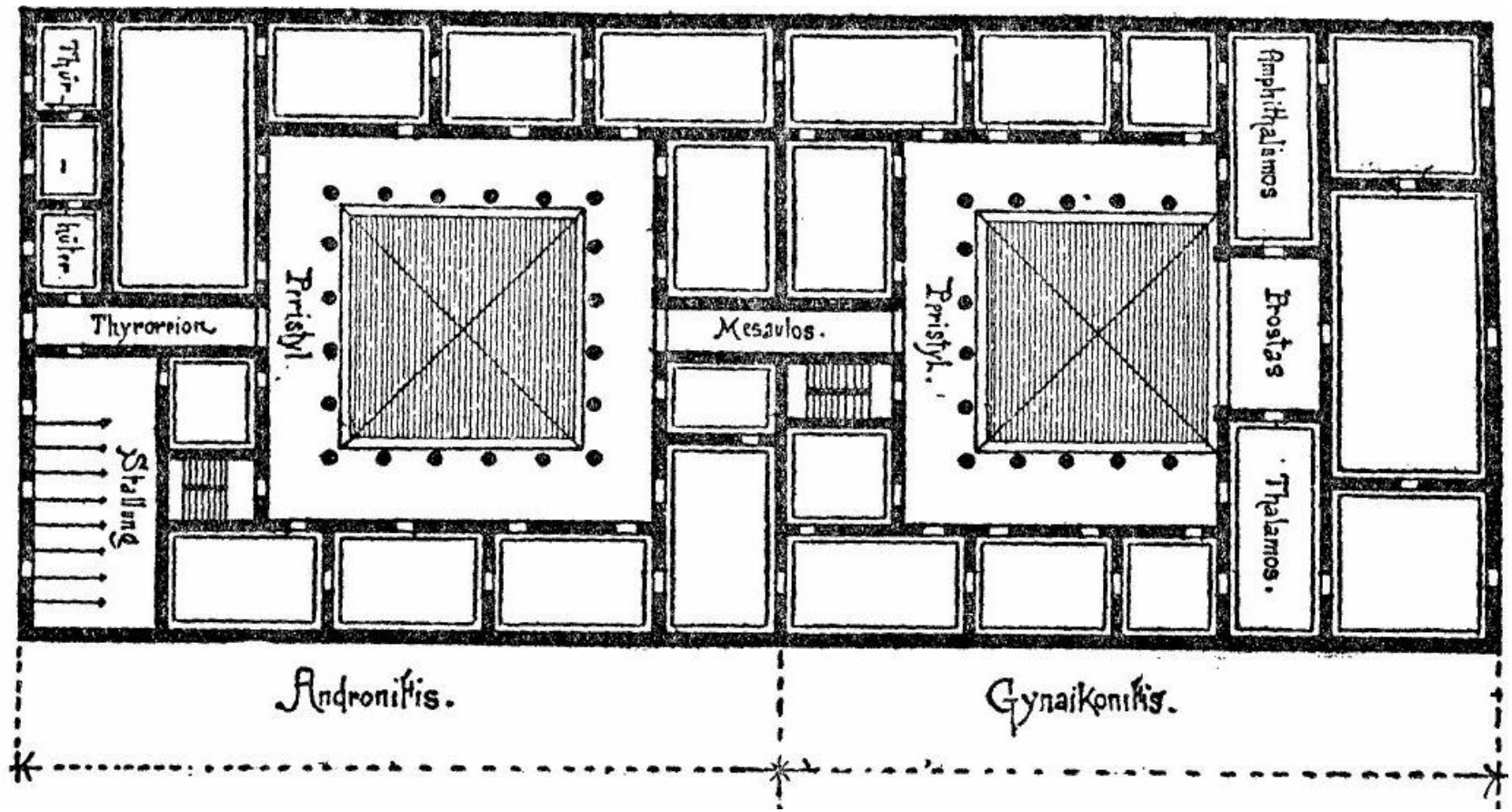
Abb. 299. Rekonstruktion des Hauses No. XXXIII.

HOUSE IN OLYNTHOS, 400 BC*

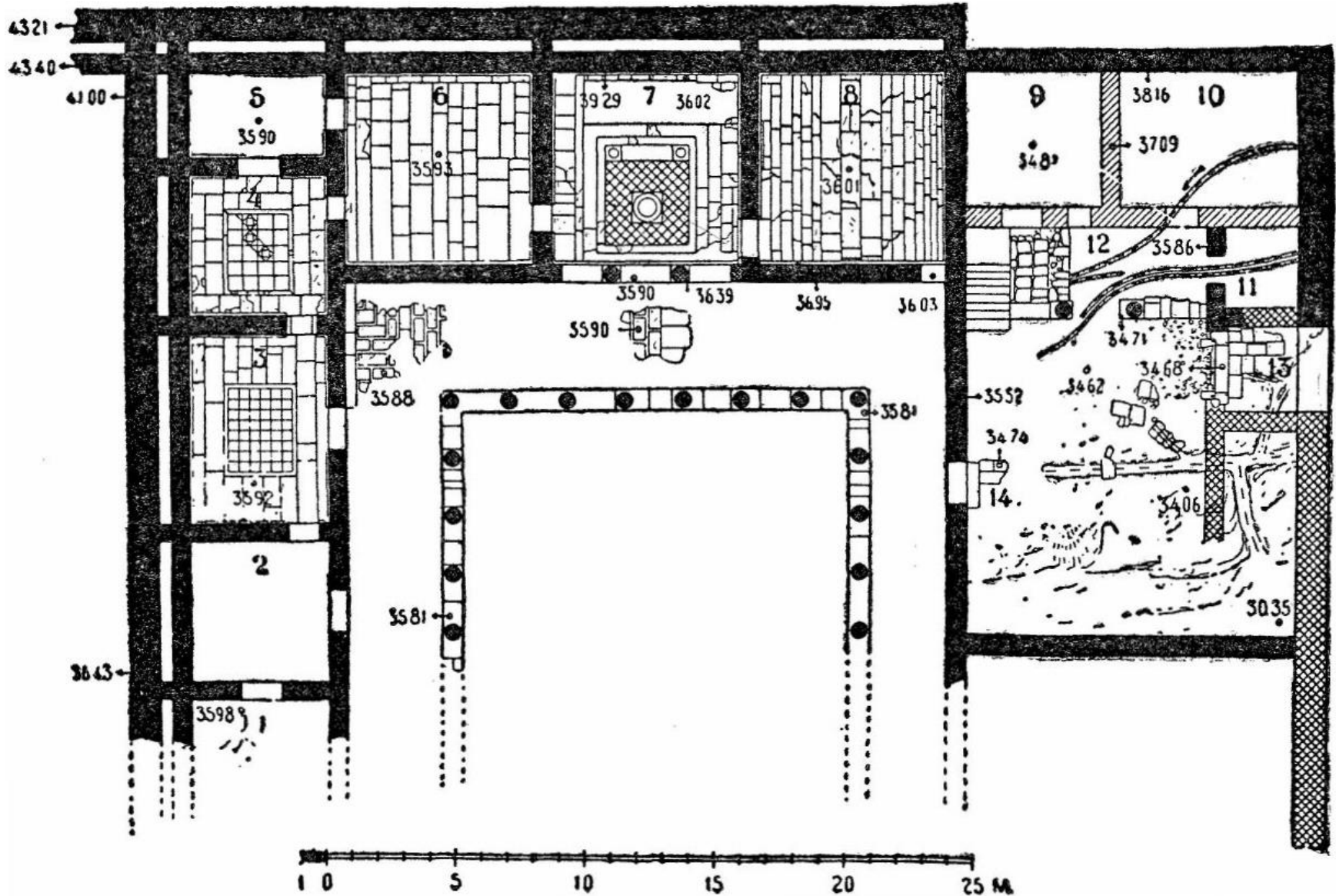
FULL PERISTYLE ONLY IN TWO HOUSES



- TWO HOUSES IN PRIENE MERGED INTO ONE
- FOR MEN AND WOMEN *ίσως τον ανδρωνίτη και γυναικωνίτη* BY VITRUVIUS

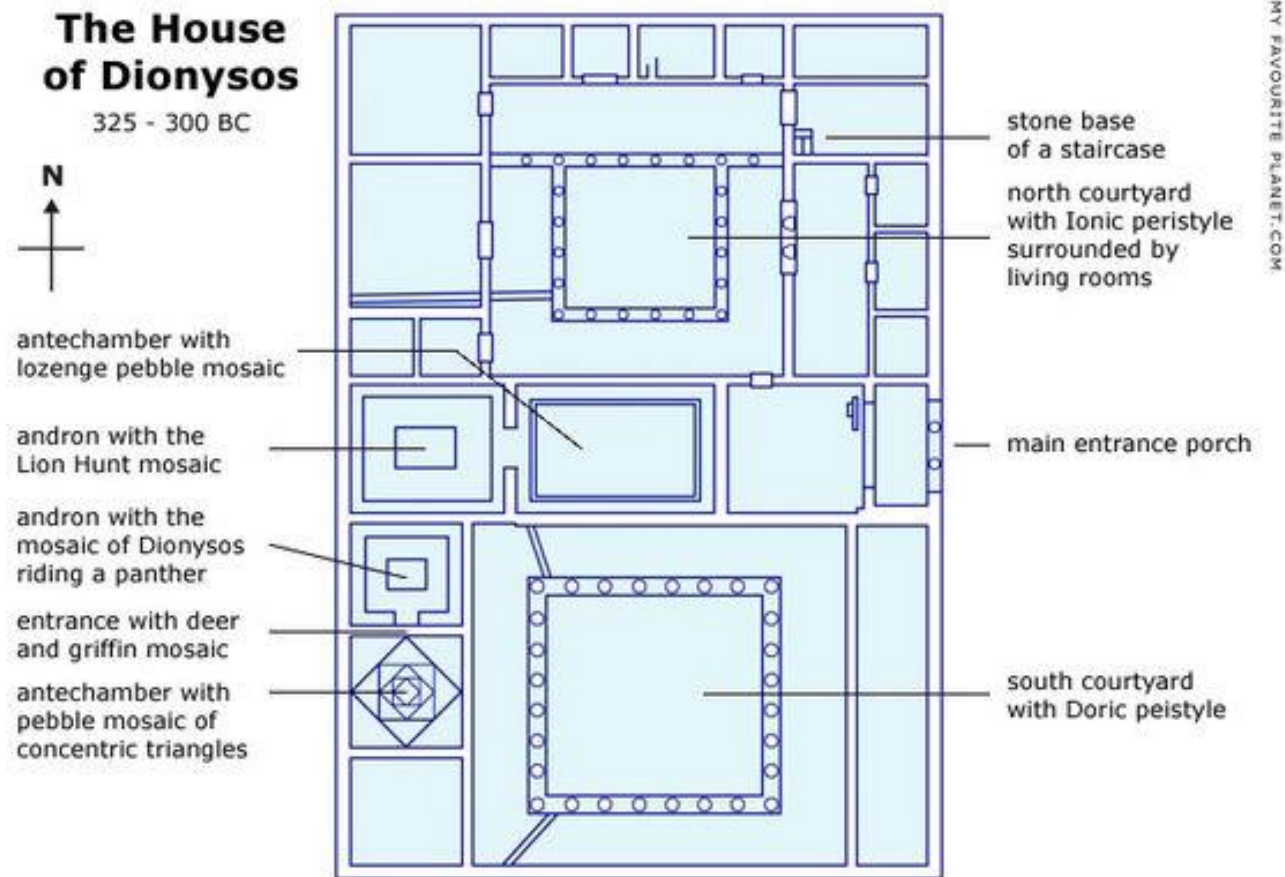


HOUSE IN PERGAMON

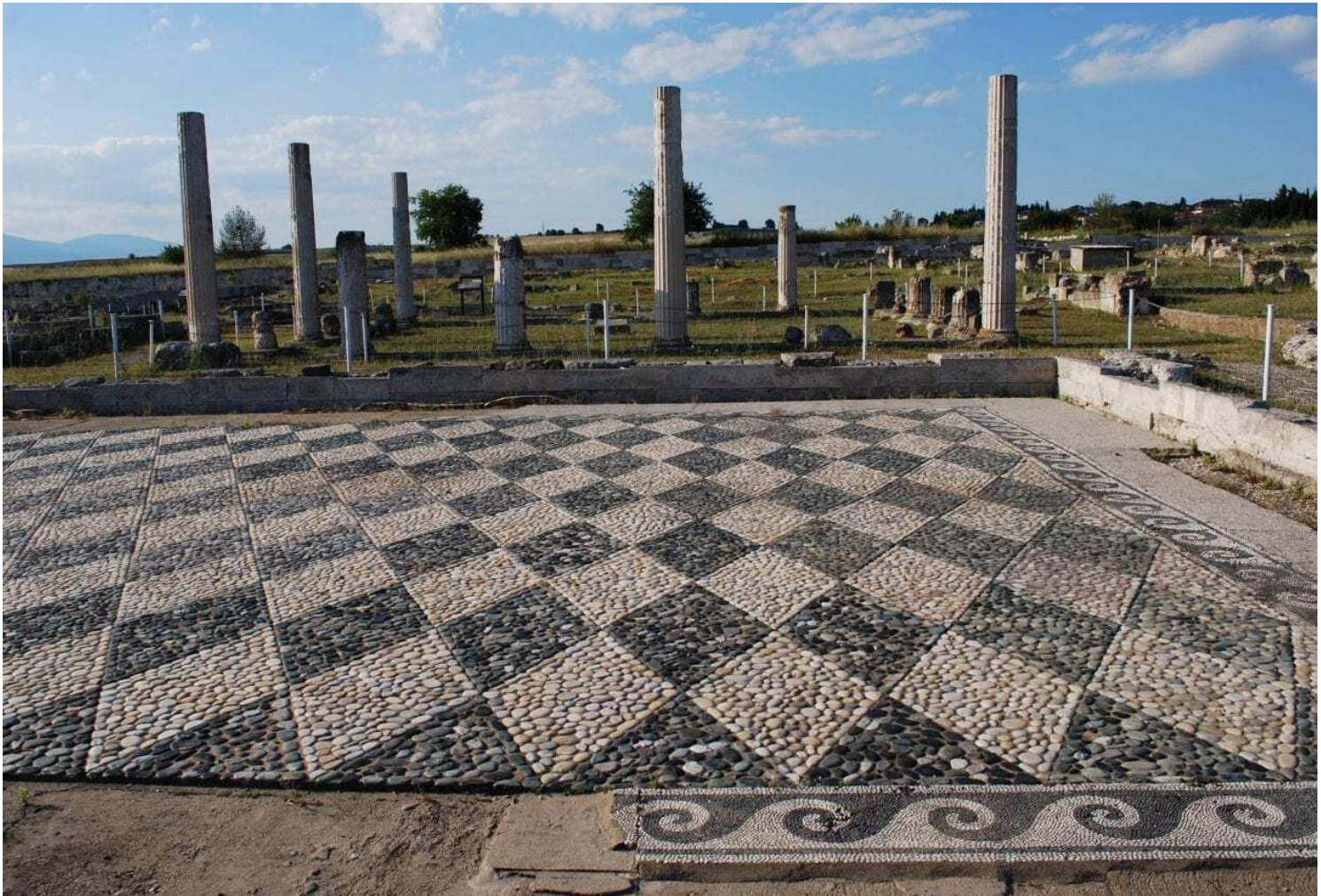


MACEDONIA – PELLA

LARGER HOUSES > PALACES



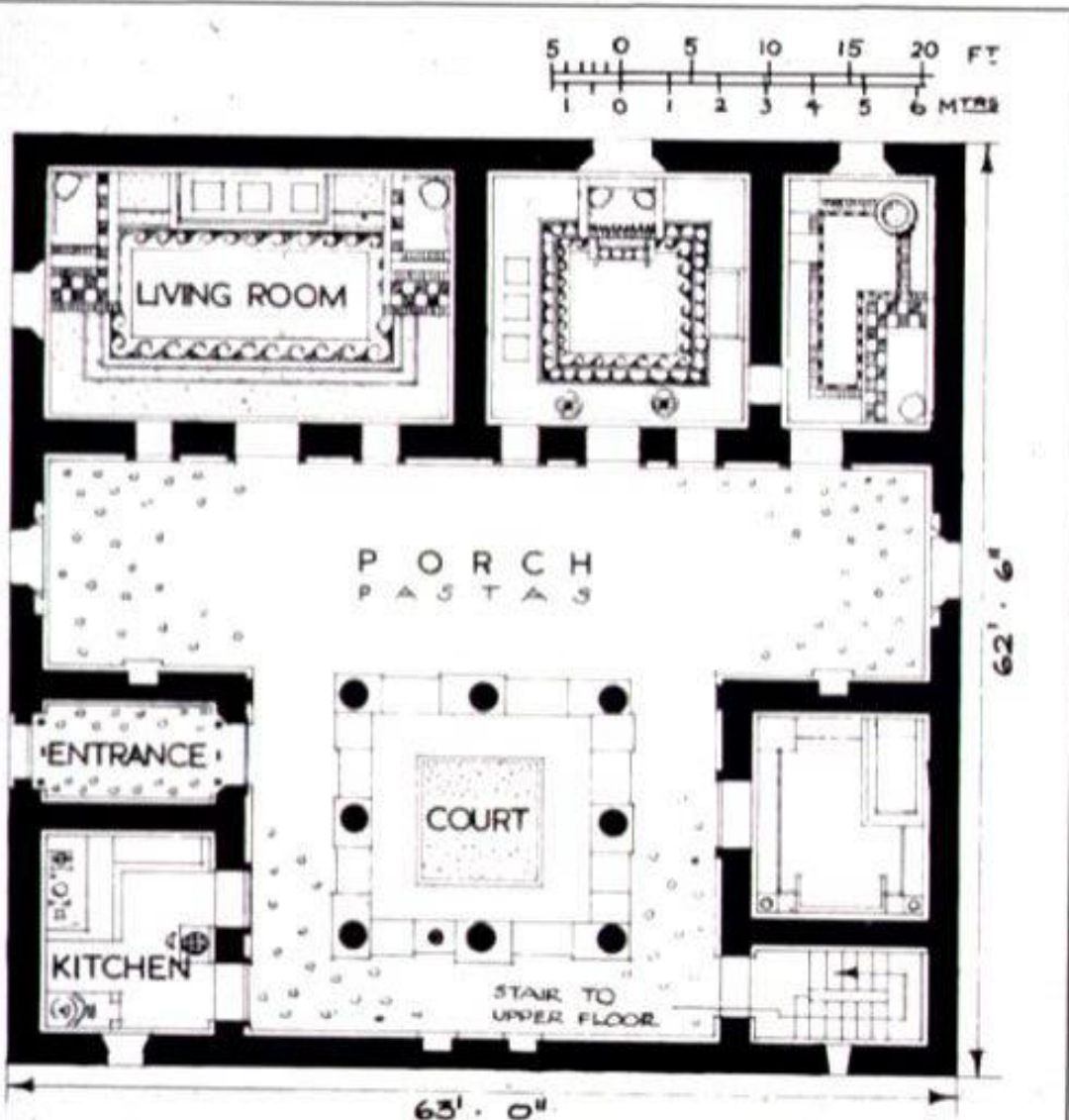
HOUSE IN PELLA



HOUSES ON DELOS



«HOUSE OF THE HILL» DELOS, 2ND C. BC



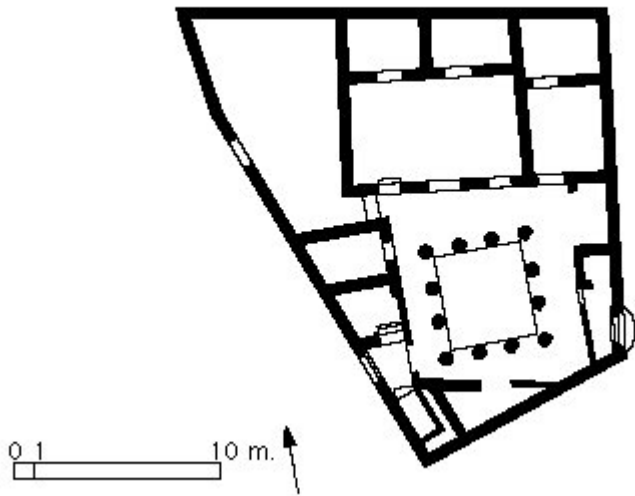
Maison de la Colline, Delos
(second century BC):
section and plan (restored).

See p.151

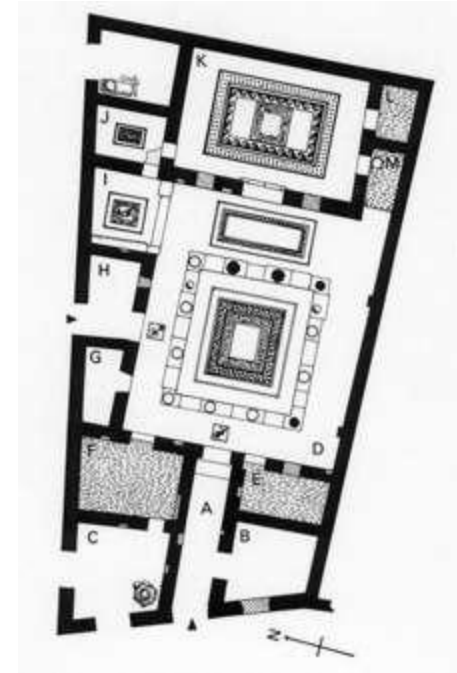
- * SQUARE PERISTYLE IS THE RULE, RESEMBLING A ROMAN ATRIUM....
- SPACIOUS, TYPES SEEN LATER IN POMPEII
- FREE COMPOSITION OF PLANS, HARD TO IDENTIFY

«HOUSE OF THE LAKE, 2^{0ς} AI. π.X.

Delos, House of the Lake



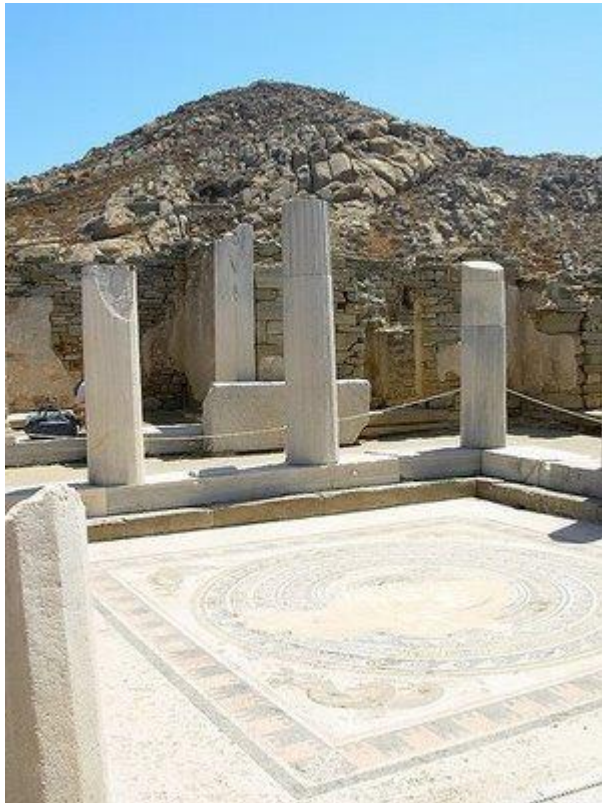
«HOUSE OF THE TRIDENT» DELOS



IRREGULAR PLANS DUE TO THE LACK OF ORGANIZED TOWN PLANNING



«HOUSE OF THE DOLPHINS» DELOS, 2^{0ς} AI. π.X.







- **SUCH TYPE OF GREEK HOUSE APPEARS EVEN IN NIPPUR OF MESOPOTAMIA**
- **VITRUVIUS DESCRIPTION RELATES TO LATE HELLENISTIC HOUSES WITH LUXURIOUS ADDITIONS**

RHODIAN PERISTYLE IN POMPEII



- * AFTER THE 2ND c. B.C.

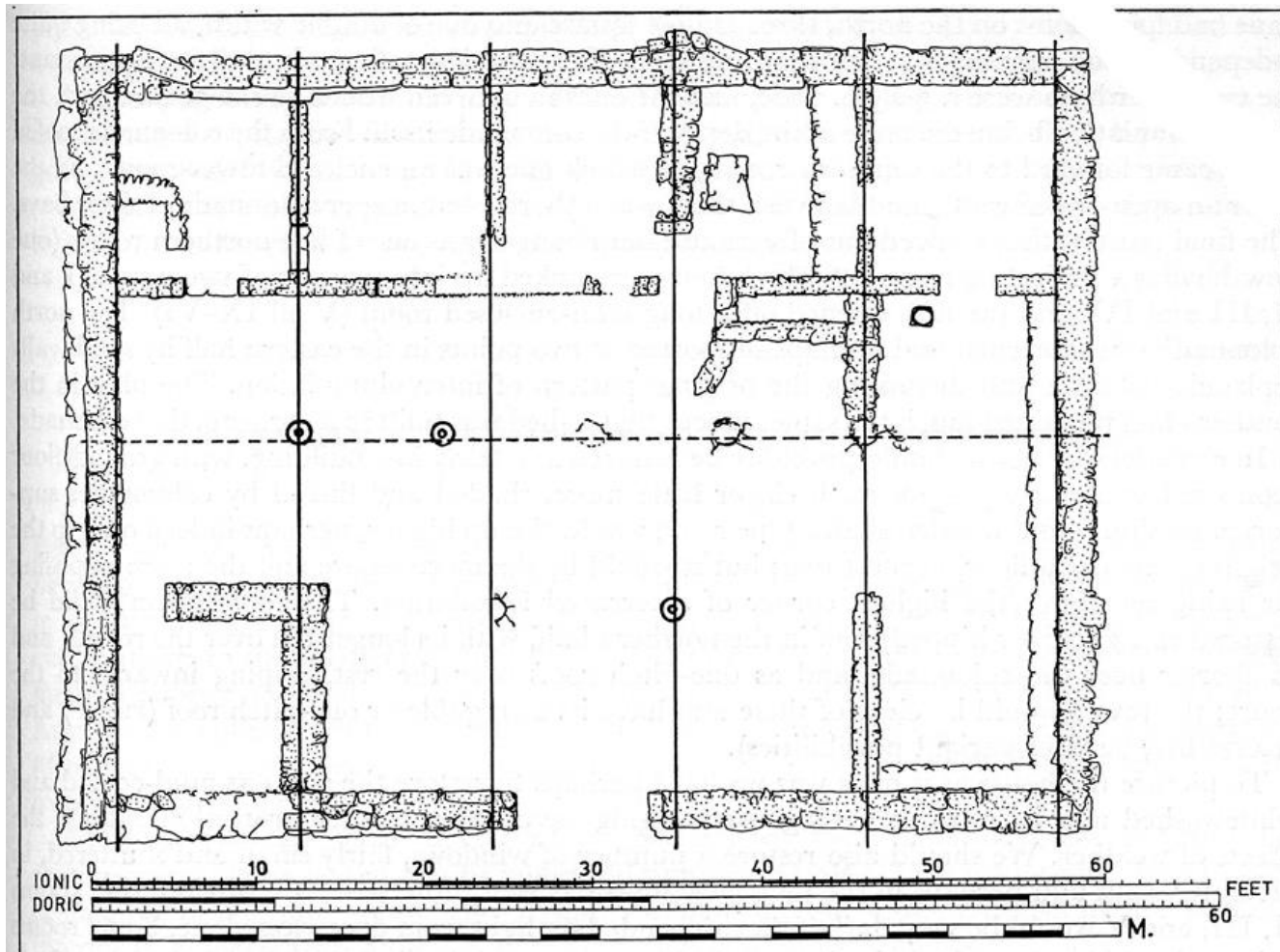
**«HOUSE OF THE TRIDENT»
DELOS, 2^{0ς} ΑΙ. π.Χ.**

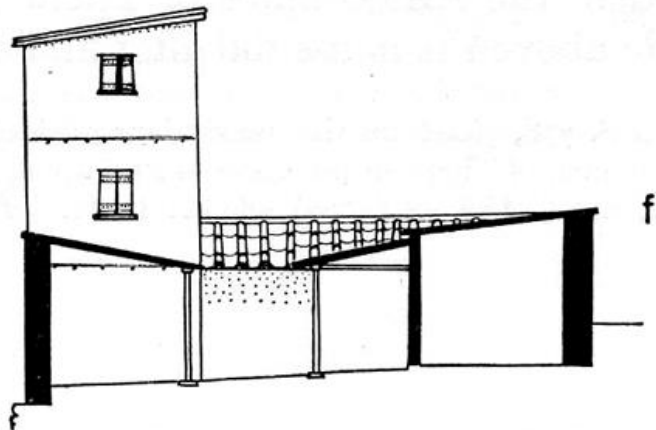
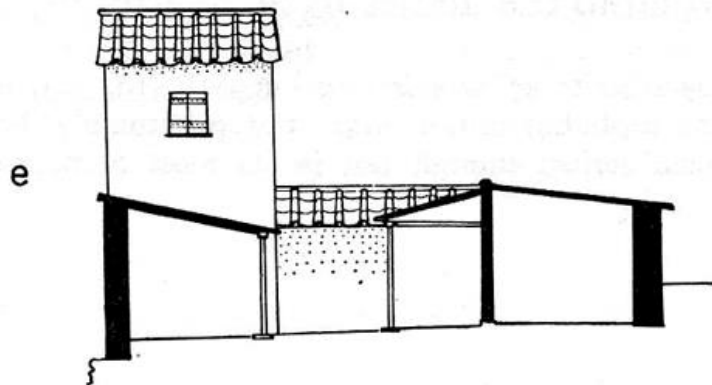
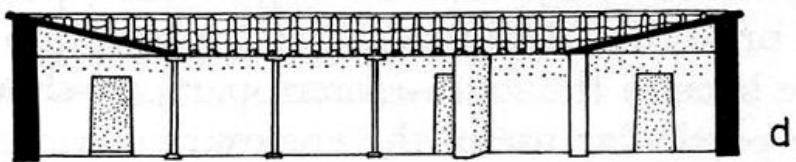
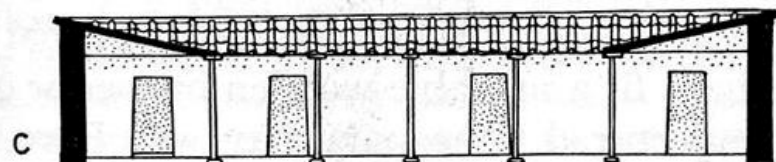
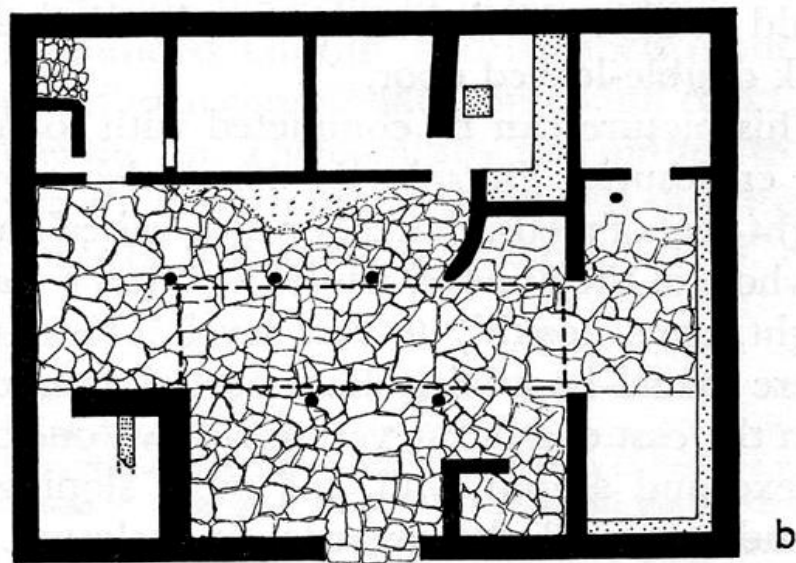
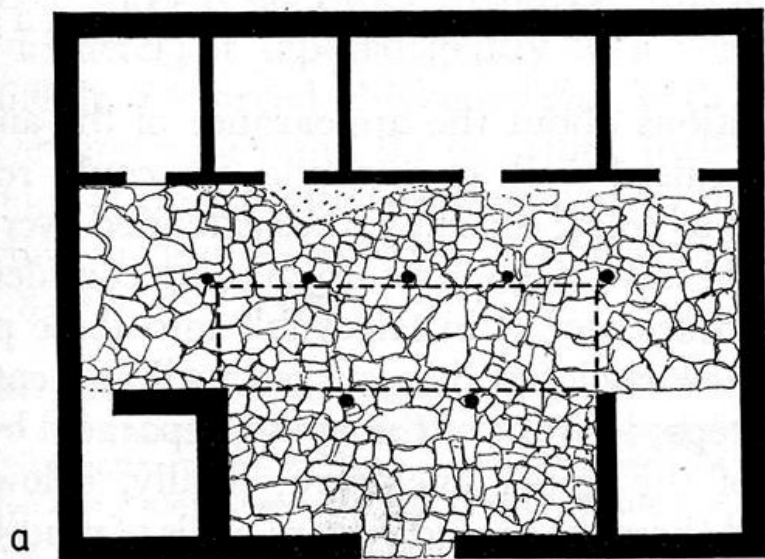


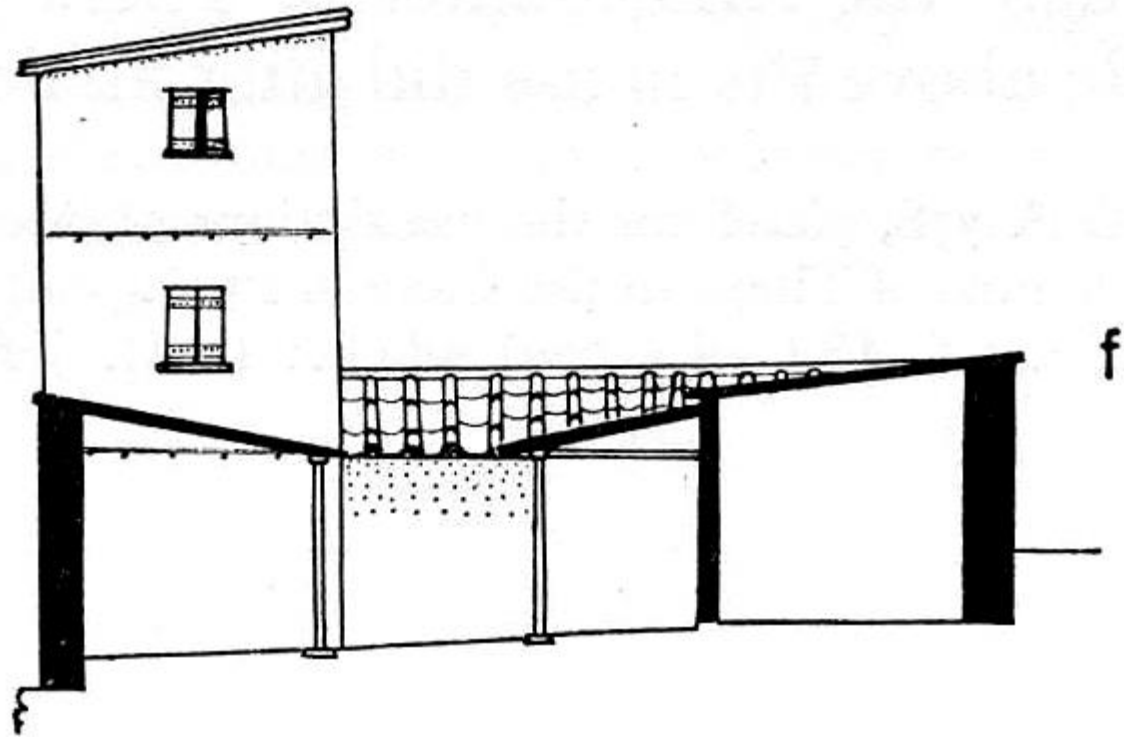
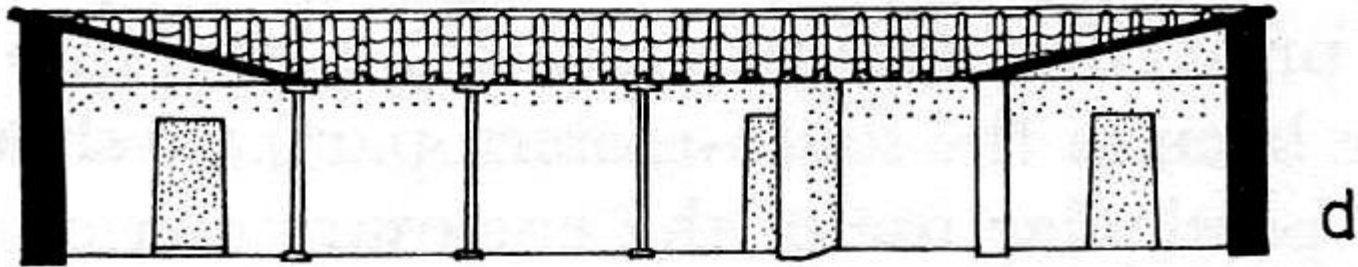
RURAL HOUSES

- THE “TOWER” – PYRGOS - BURG
- ΚΛΕΙΣΙΟΝ, ΦΥΛΑΚΗ (“*PRISON*”)
- * ΨΕΥΔΟ-ΔΗΜΟΣΘΕΝΗΣ 47. 56
- ΞΕΝΟΦΩΝ, ΟΙΚΟΝΟΜΙΚΟΣ 9.2 – 9.5
- AENEAS TACITUS 10.9-10
- UPPER STORY FOR SLAVES, WOMEN, GRAIN.... (*LYSIAS*)

THE HOUSE OF VARI

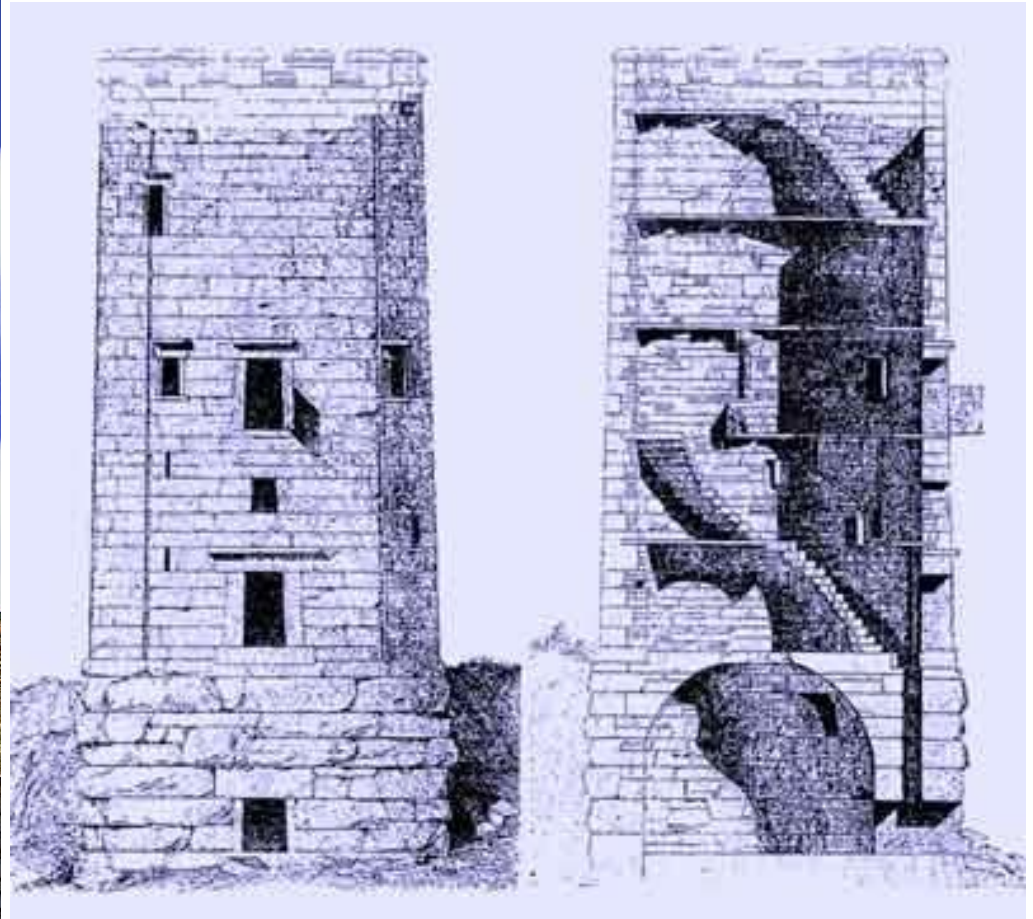




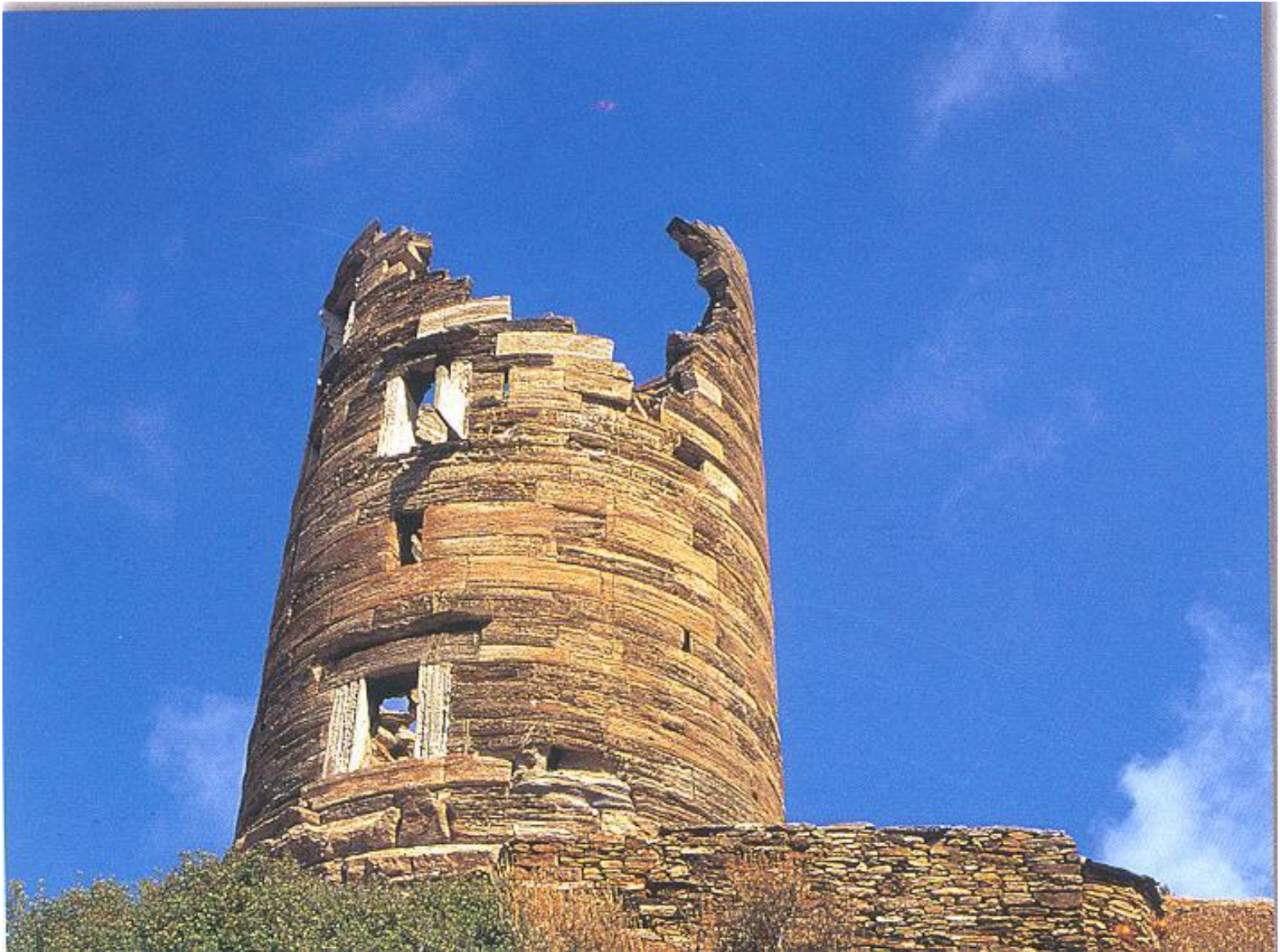




TOWER OF ST. PETER ON ANDROS



Morris & Dousougli, doors locked from the outside



TOWER ON NAXOS

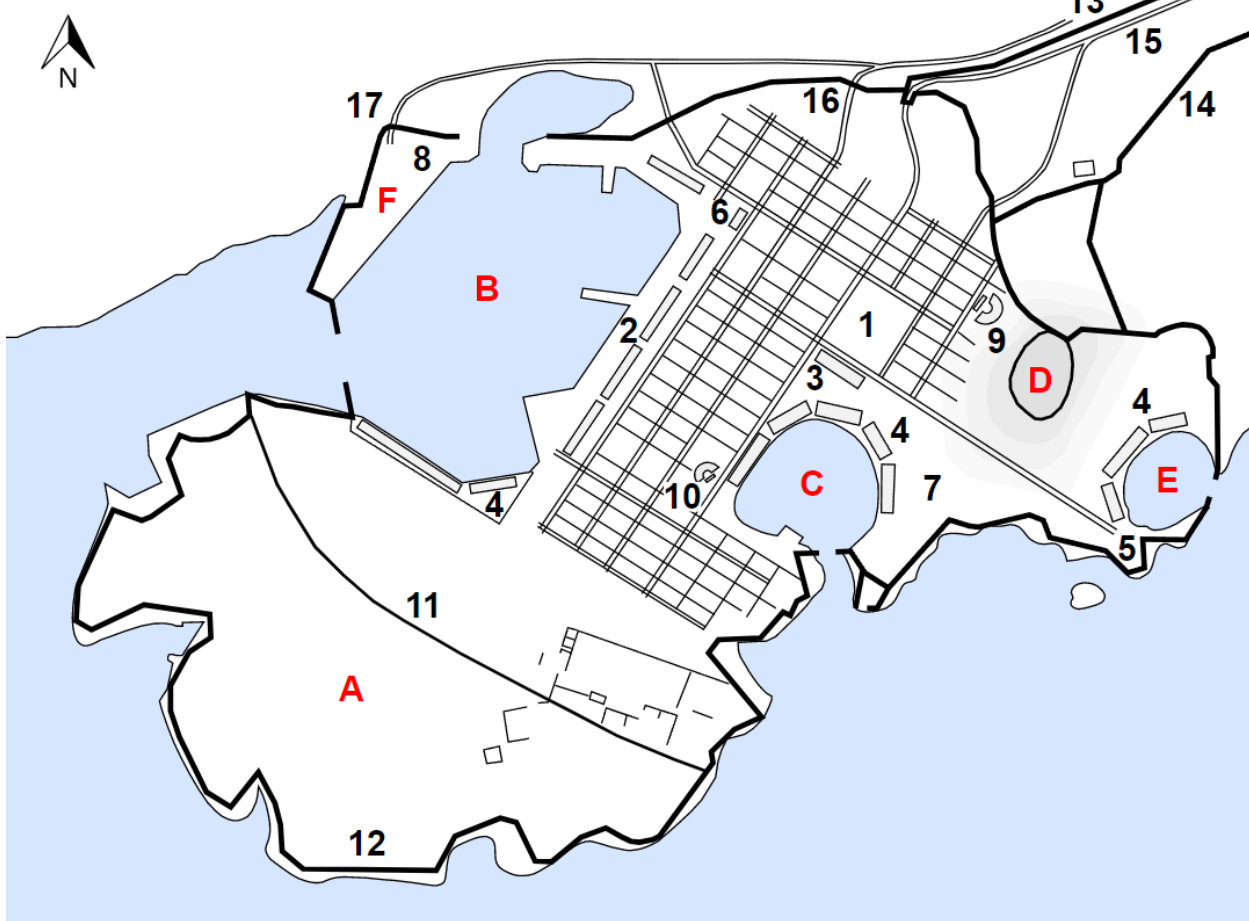




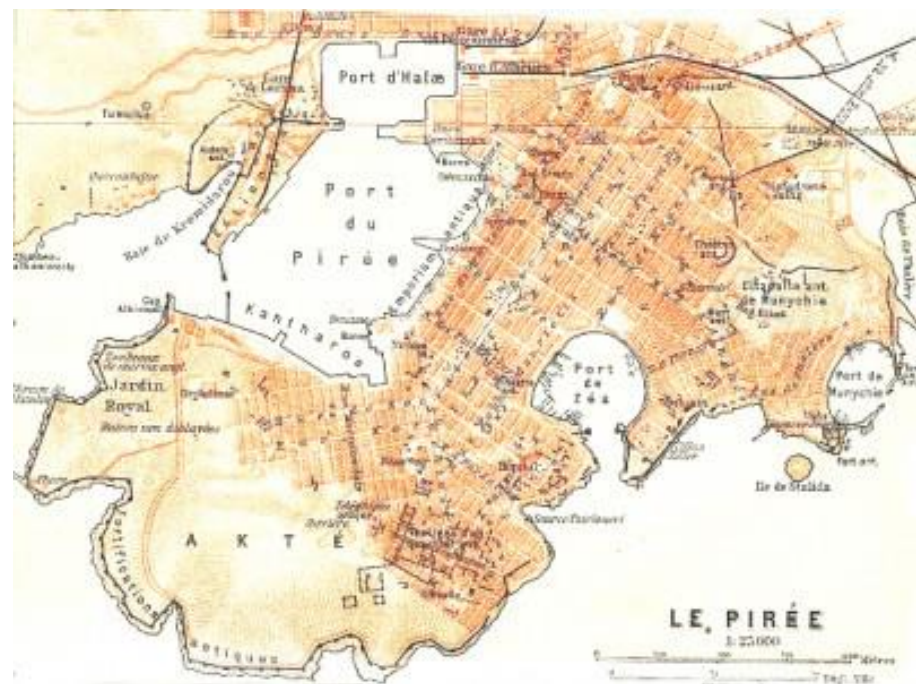


HIPPODAMOS, 498-408 B.C.

- IN IONIA UNDER PERSIAN RULE
- PARTICIPATED IN THE IONIAAN REVOLT
- EXILED TO SYRIA FOR 15 YEARS



PIRAEUS - CLASSES



HIPPODAMEIAN SYSTEM

- CENTRAL AREA WITH THE AGORA
(LATER, THEATER)
- ARBITRARY GRID WITHOUT NATURAL
RELIEF

HIPPODAMEIAN SOCIETY

- 10.000 MEN WITH FOREIGNERS, SLAVS, WOMEN > 50,000
- THREE CLASSES: FARMERS, ARTISANS AND SOLDIERS
- USE OF LAND: SACRED, PUBLIC AND PRIVATE

HIPPODAMEIAN CITY

- PIRAEUS (460 π.X.), MILETUS, RHODES – RODOS...
- TOWN PLAN REFLECTS A LOGICAL SOCIAL STRUCTURE
- RELATIONSHIP BETWEEN INDIVIDUAL AND SOCIAL GOALS.
- ARISTOTELES' CRITIQUE – **PORTS!**

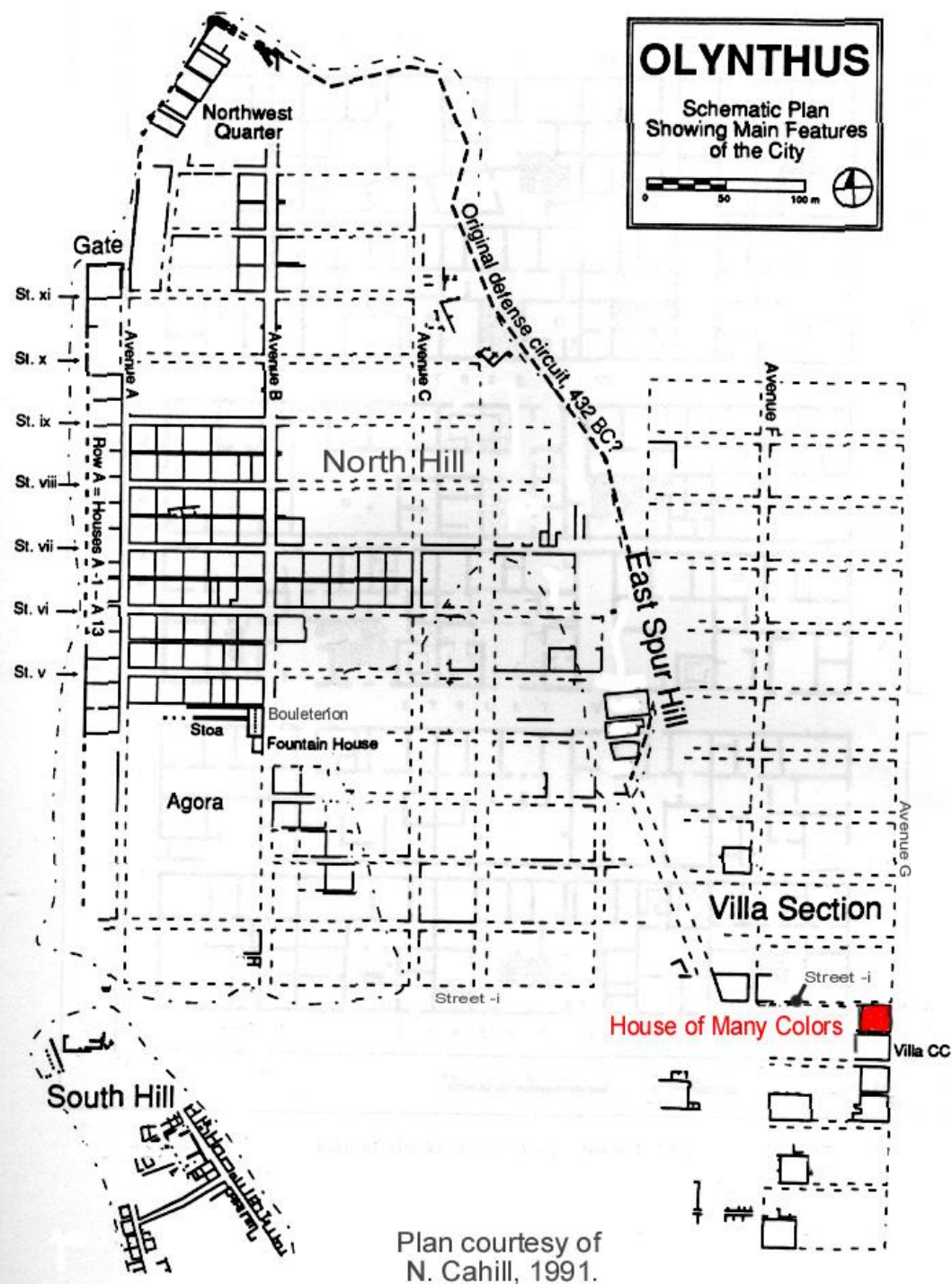
HIPPODAMOS' SYSTEM

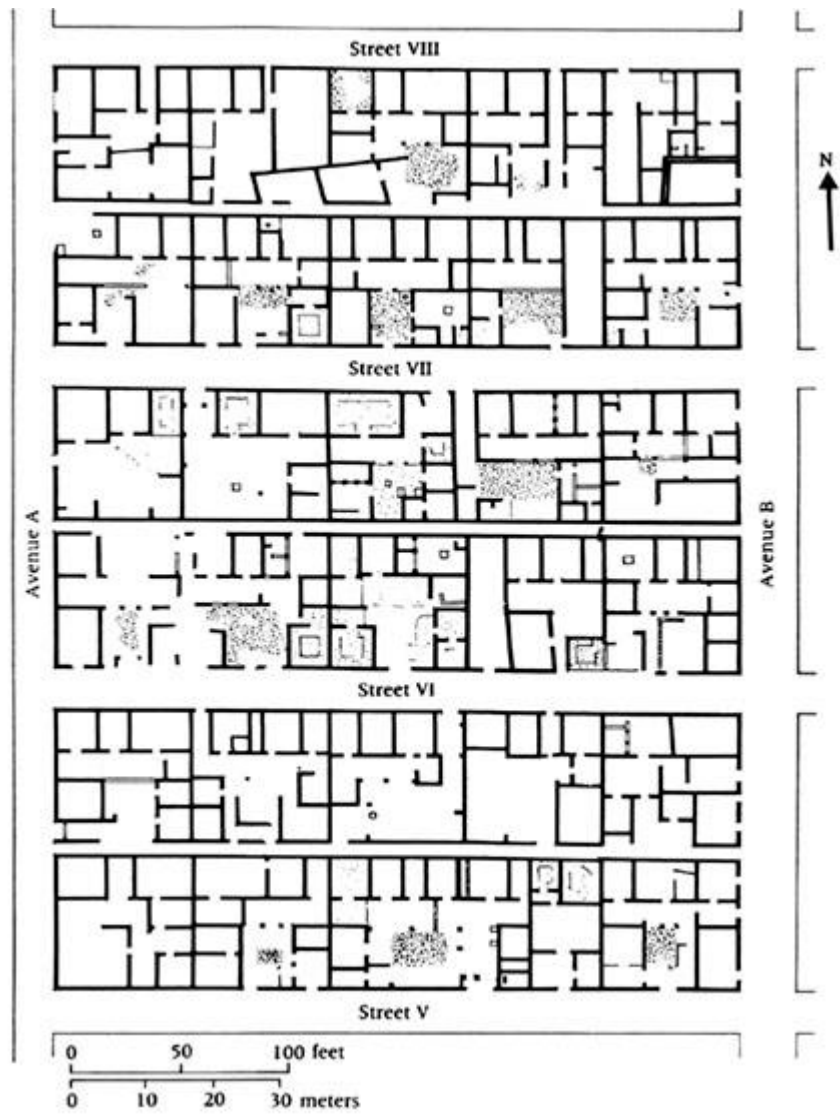
- NEWLY FOUNDED CITIES
- NEW TECHNOLOGIES - MASONRIES
- INTRODUCTION OF NEW HOUSE PLANS
- TYPICALLY NEW STRUCTURES (THEATERS)
- COMBINATION OF ARCHITECTURE AND STATUARY
- = THE “IMAGE” OF THE CITY

OLYNTHUS

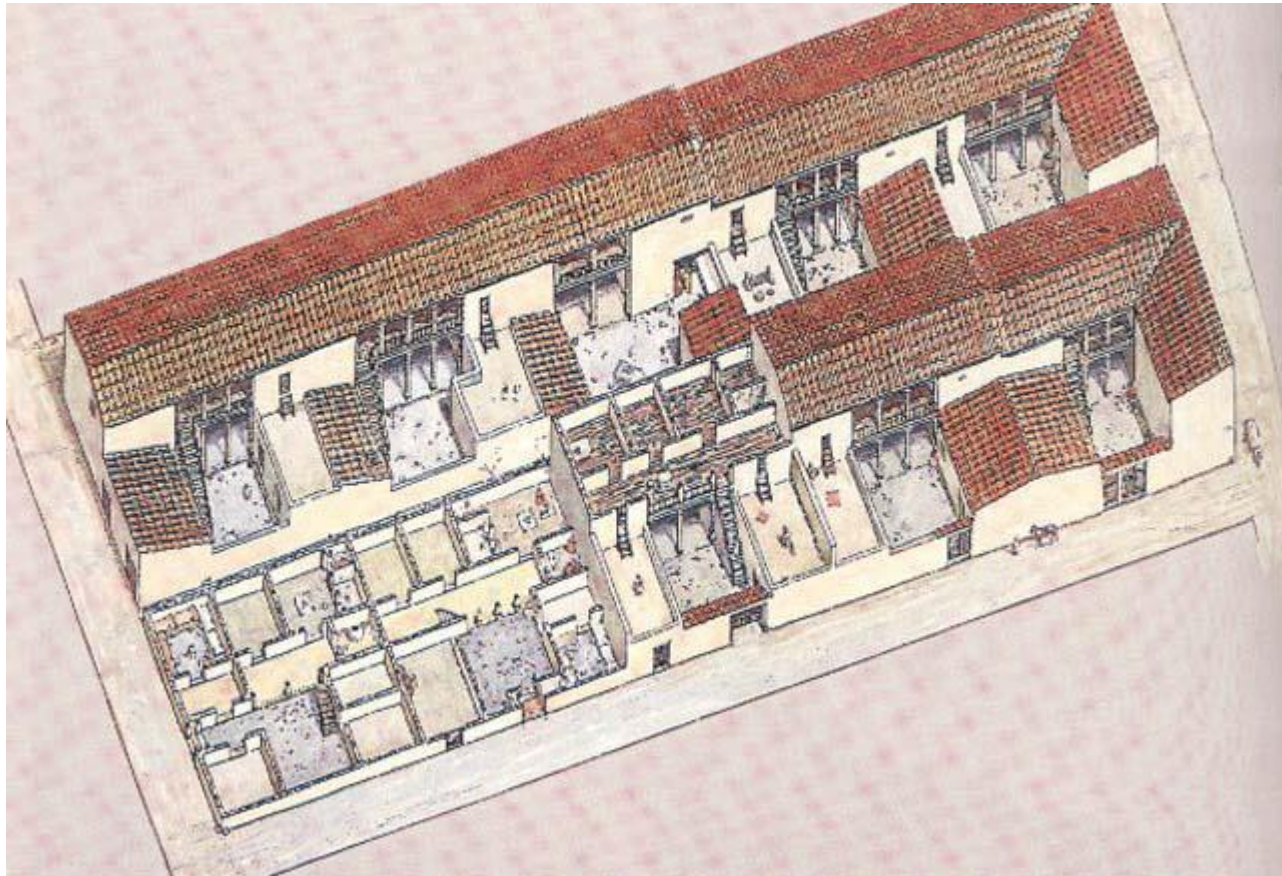
432

- EQUAL PLOTS

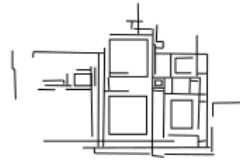




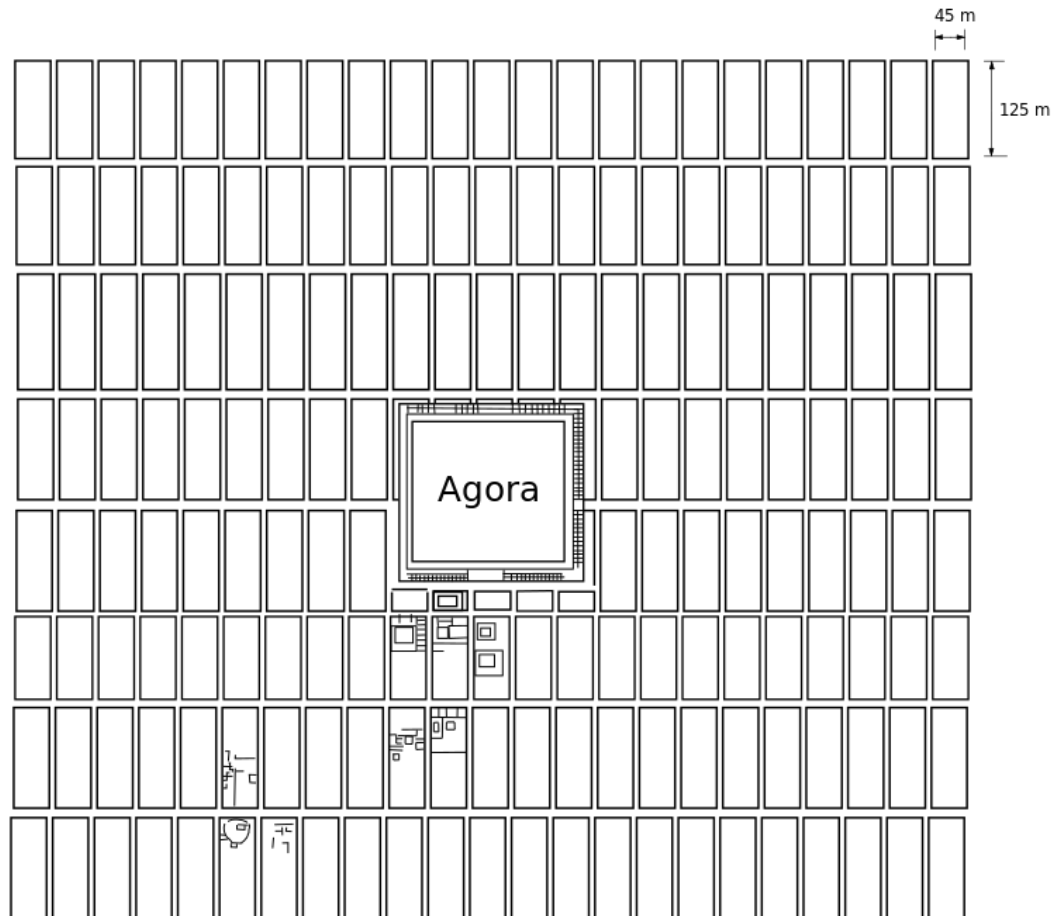
CITY ISLAND IN OLYNTHOS



Pella



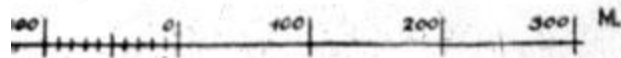
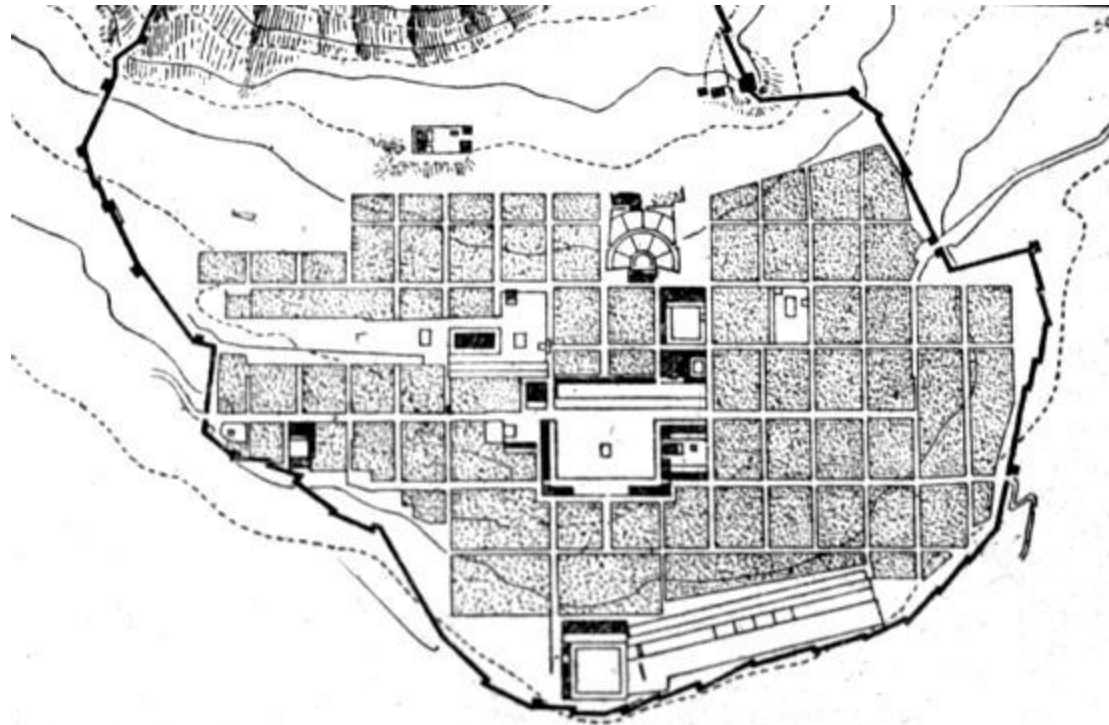
Palace



PELLA, AGORA 200 X 200 METERS!!



HIPPODAMEIAN SYSTEM AND THE AGORA. PRIENE

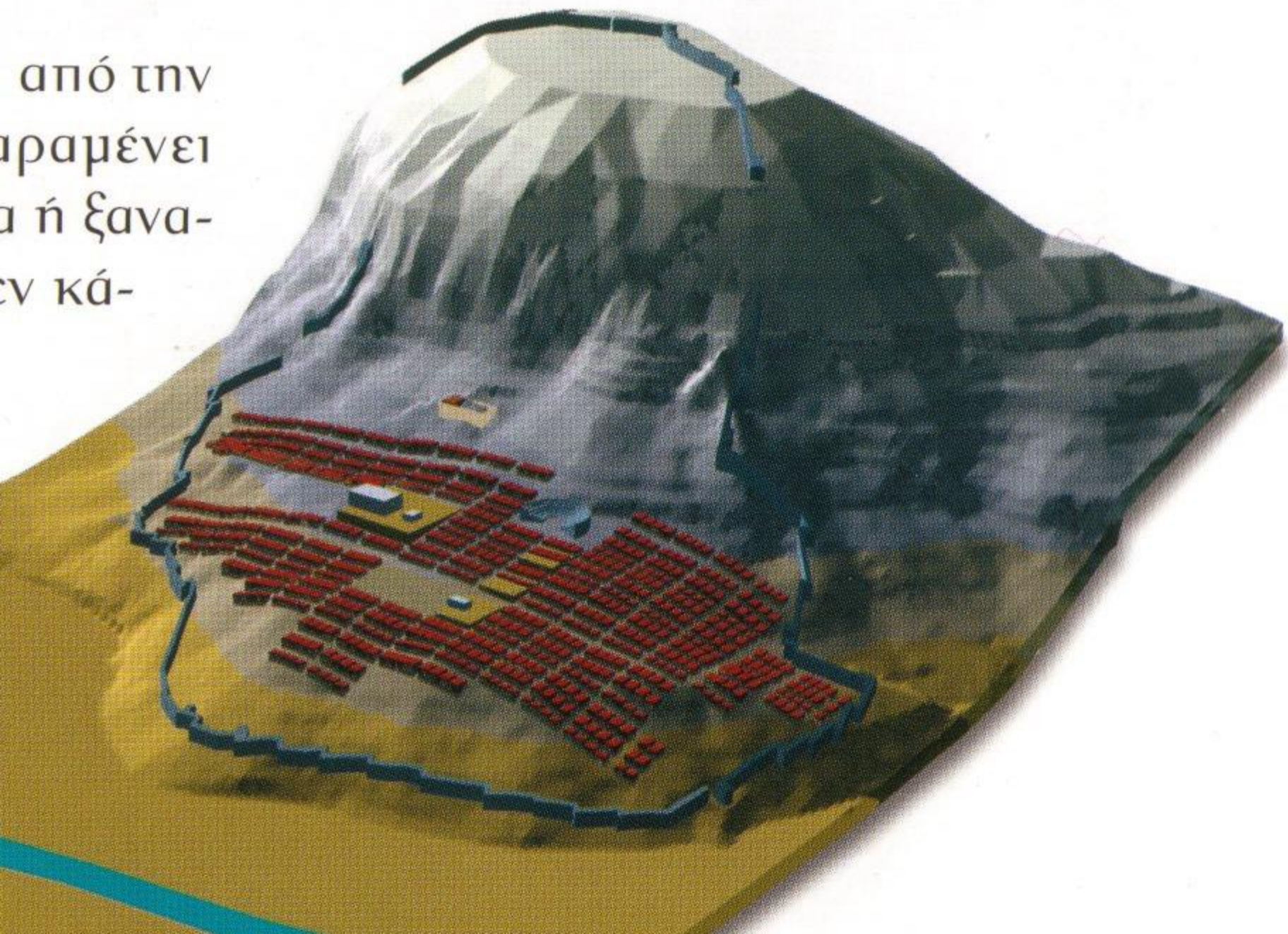




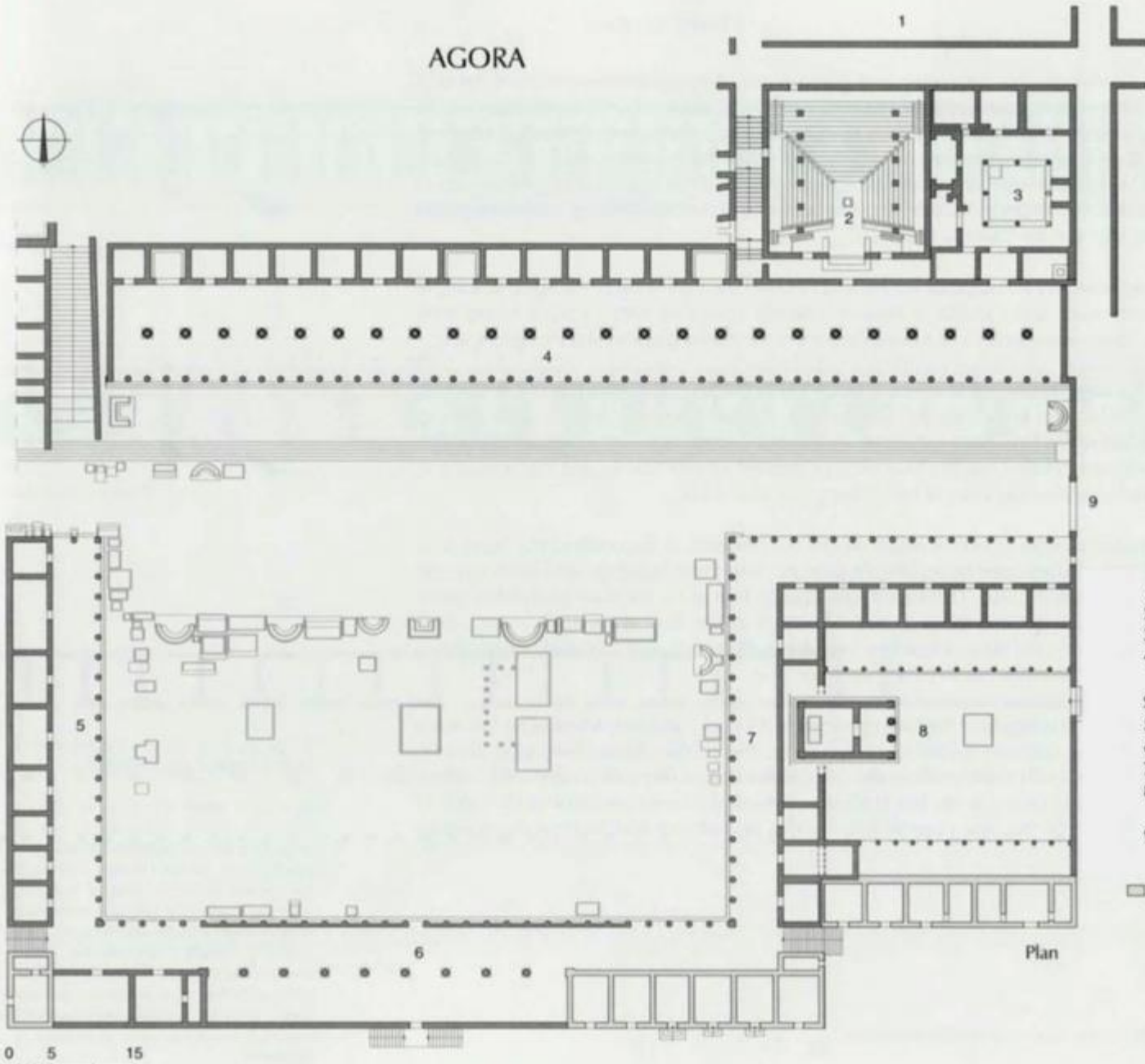


κατά του

από την
απαρμένει
α ή ξανα-
εν κά-



AGORA



- 1. Upper Gymnasium
- 2. Bouleuterion
- 3. Prytaneion
- 4. Sacred Stoa

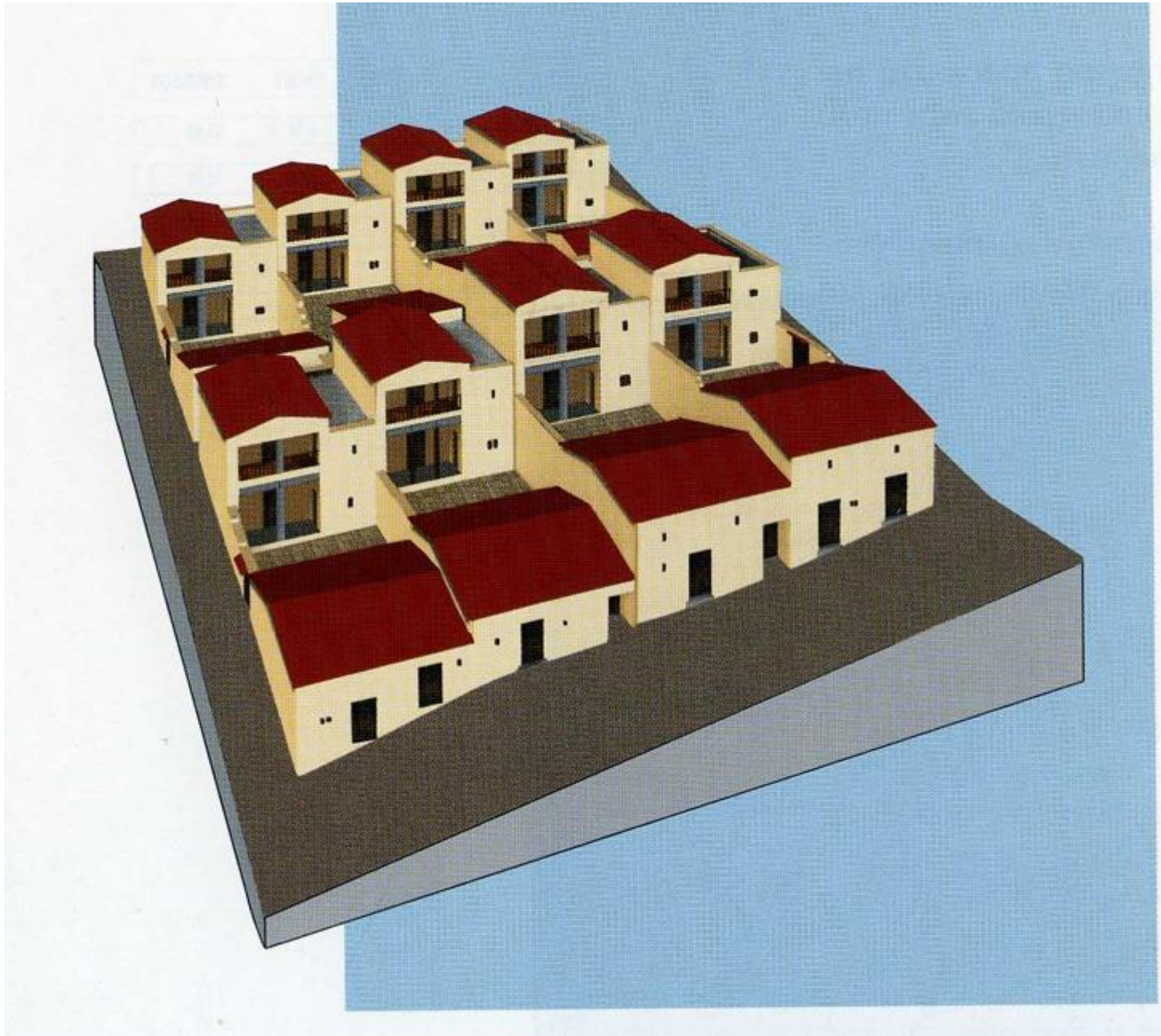
- South Stoa
- 5. West part
- 6. South part
- 7. East part
- 8. Temple of Asclepius
- 9. Agora Gate

□ Shops at lower level

Plan

0 5 15





ΟΙΚΟΔΟΜΙΚΟ ΤΕΤΡΑΓΩΝΟ

