



The Visual Cultures of Classical Greece

Prof. Dimitris Plantzos

The Visual Cultures of Classical Greece

- Introduction [3/10]
- What is “Greek” about Greek art [17/10]
- **Nemea – Olympia – Delphi field trip [20-21/10]**
- Narrativity and story-telling [24/10]
- Monumentality [25/10]
- The visual cultures of Greek pottery [31/10]
- **National Museum class [10/11]**
- **Midterms [14/11]**
- Materiality [21/11]
- Agency [28/11]
- *Mimesis* [5/12]
- Realism [12/12]
- **Acropolis Museum class [15/12; 15:00-17:00]**

The Visual Cultures of Classical Greece

- Introduction [3/10]
- What is “Greek” about Greek art [17/10]
- Nemea – Olympia – Delphi field trip [20-21/10]
- Narrativity and story-telling [24/10]
- Monumentality [25/10]
- **The visual cultures of Greek pottery [31/10]**
- National Museum class [10/11]
- Midterms [14/11]
- Materiality [21/11]
- Agency [28/11]
- *Mimesis* [5/12]
- Realism [12/12]
- Acropolis Museum class [15/12; 15:00-17:00]

The visual cultures of Greek pottery

Reading:

Plantzos 2016: 70-75; 86-103.

Survey:

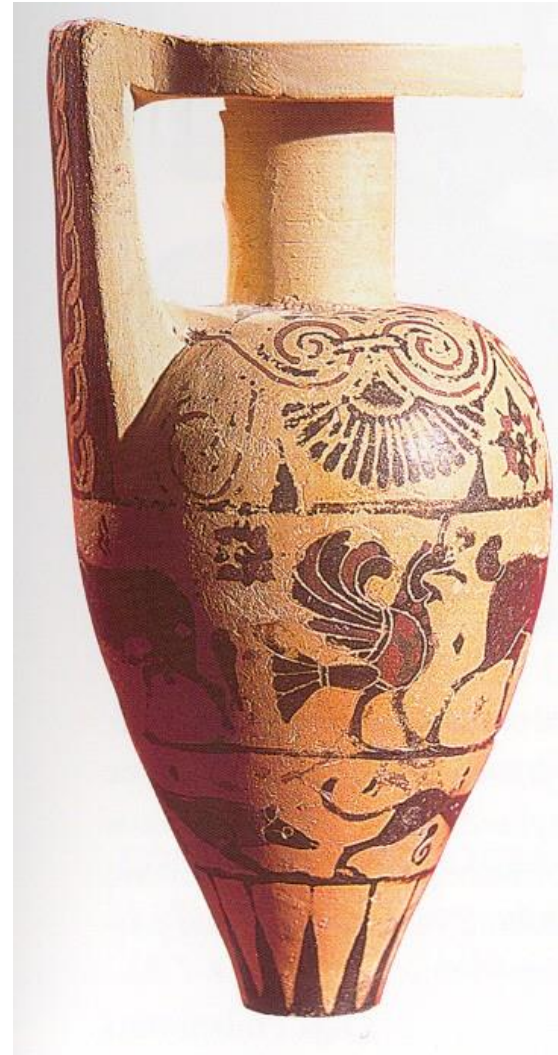
Kaltsas 2007: 153-173

Black-figure vase painting:



Black-figure vase painting:

- invented by Corinthian potters in the 7th century BCE
- adopted by Athenian pottery workshops around 630 BCE
- it combined the techniques of silhouette and incision
- it frequently used added colours.



Black-figure vase painting:

- invented by Corinthian potters in the 7th century BCE
- adopted by Athenian pottery workshops around 630 BCE
- it combined the techniques of silhouette and incision
- it frequently used added colours.



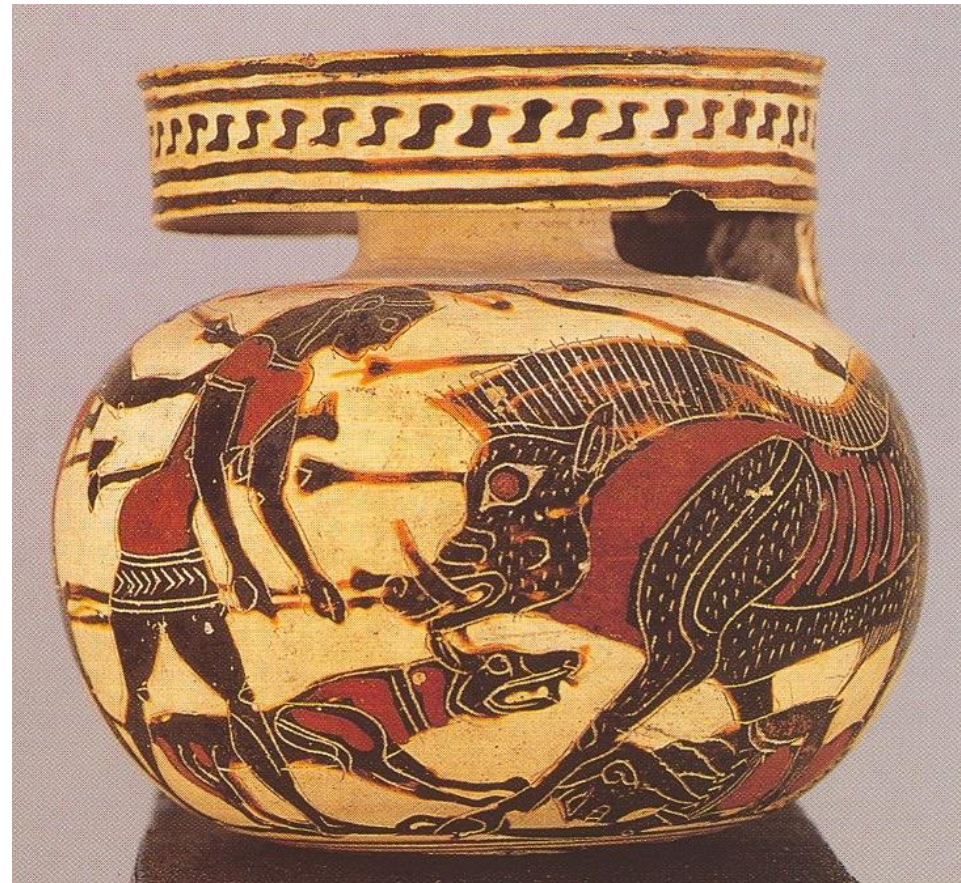
Black-figure vase painting:

- invented by Corinthian potters in the 7th century BCE
- adopted by Athenian pottery workshops around 630 BCE
- it combined the techniques of silhouette and incision
- it frequently used added colours.



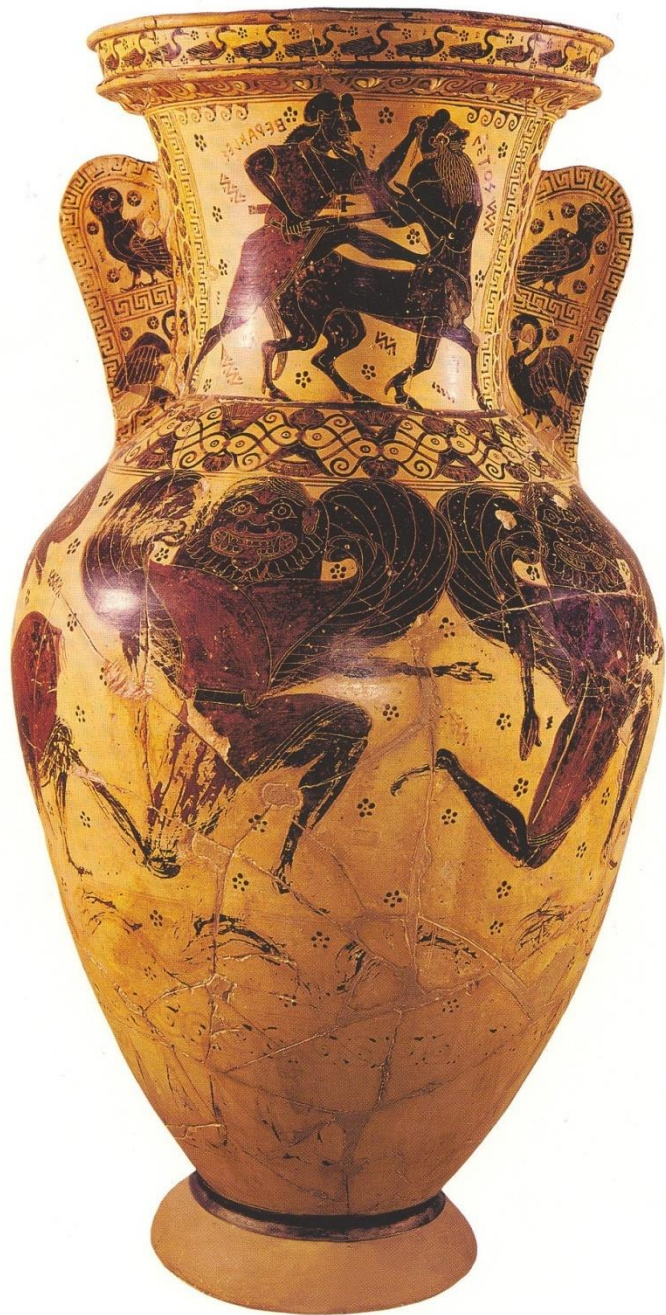
Black-figure vase painting:

- invented by Corinthian potters in the 7th century BCE
- adopted by Athenian pottery workshops around 630 BCE
- it combined the techniques of silhouette and incision
- it frequently used added colours.









**Athenian black-figure amphora.
c. 615-605 BCE**



**Athenian black-figure lebes.
c. 580 BCE**



**Athenian black-figure lebes.
c. 580 BCE**



**Athenian black-figure lebes.
c. 580 BCE**



**Athenian black-figure
krater.
c. 570-565 BCE**





ΠΥΒΙΤΑ

ΑΙΧΗ







ETRURIA

ATHENS

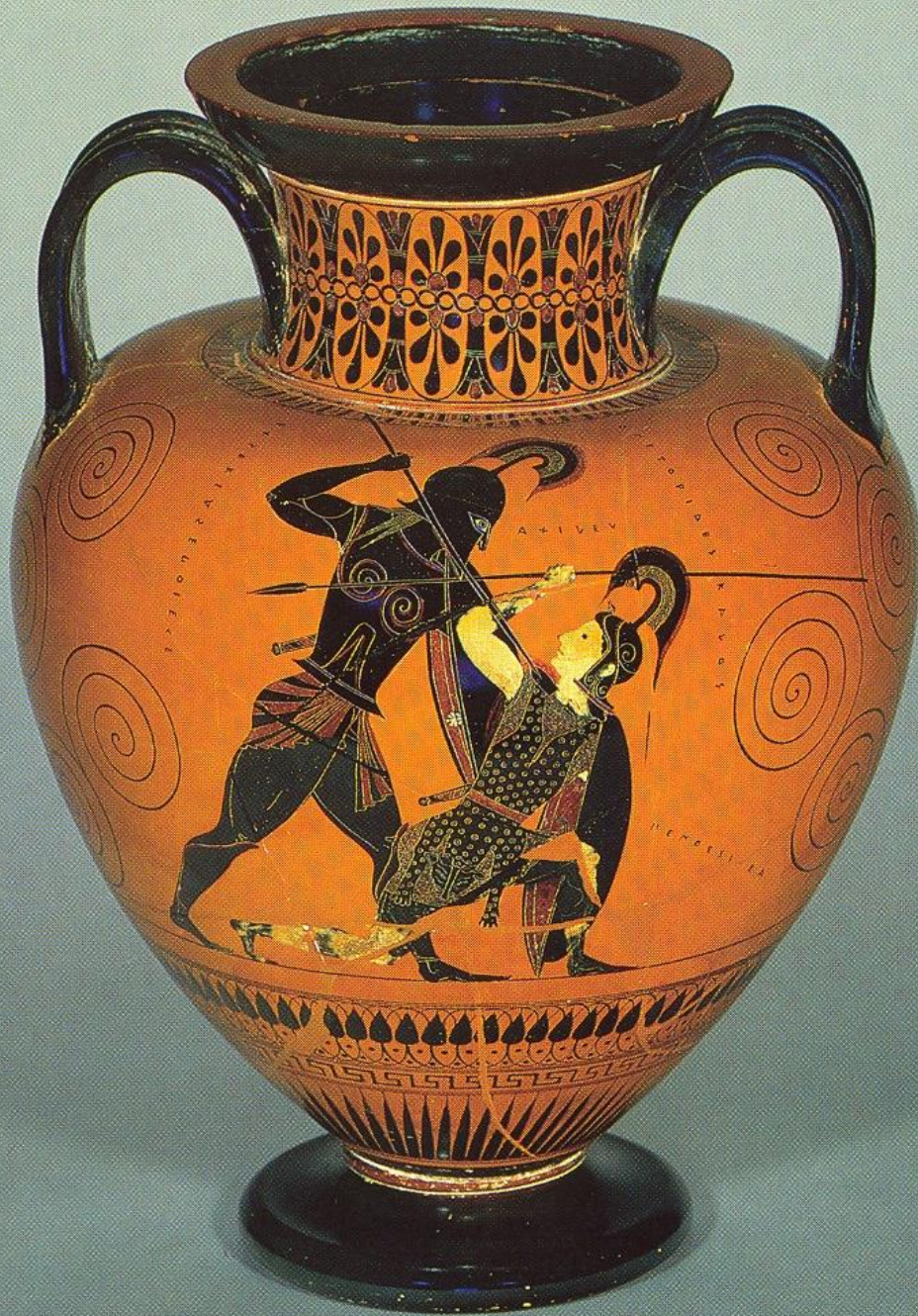




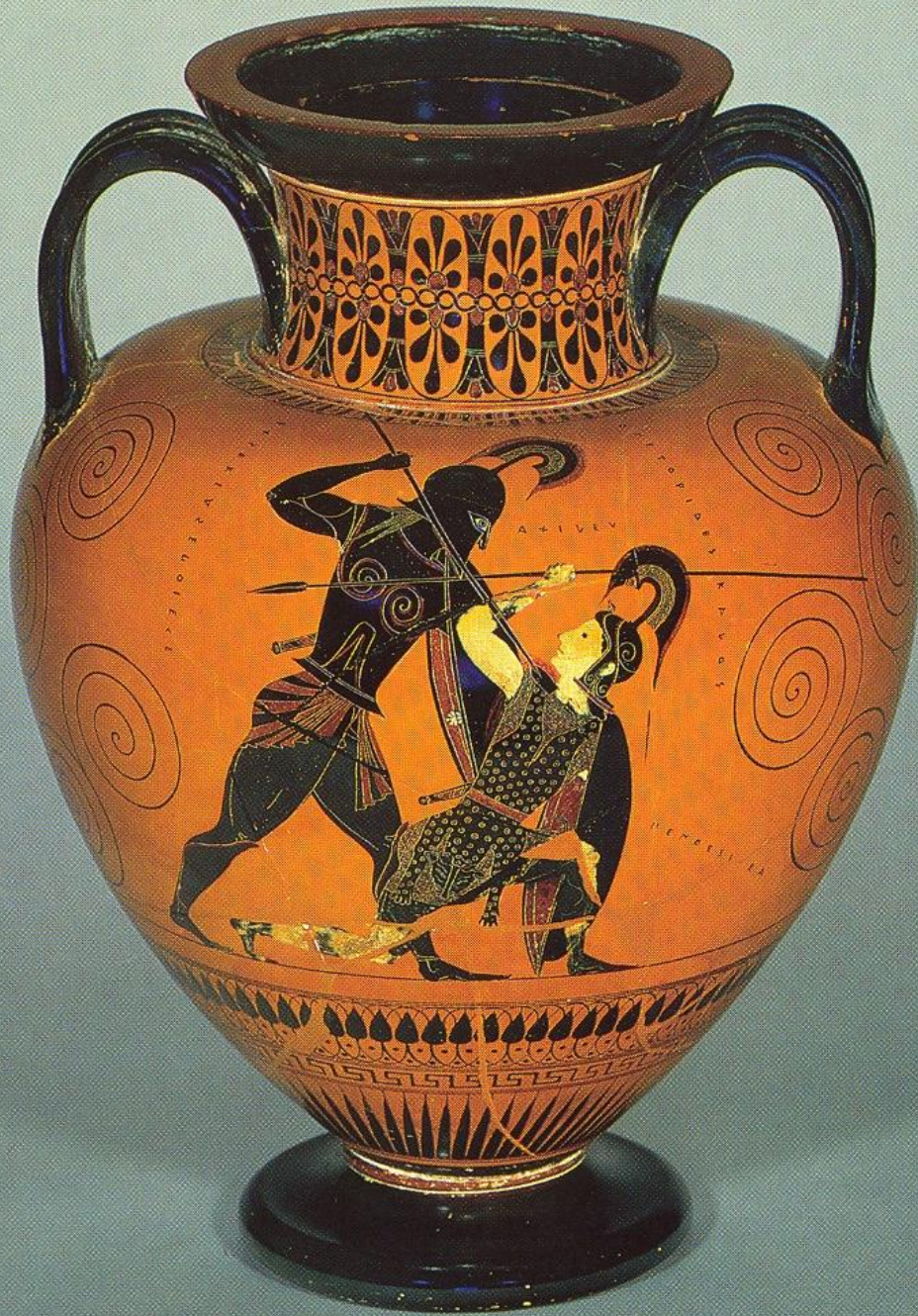
HUELVA

ATHENS

ΑΙΛΥΒΙΑ



**Athenian black-figure
amphora. c. 530 BCE**



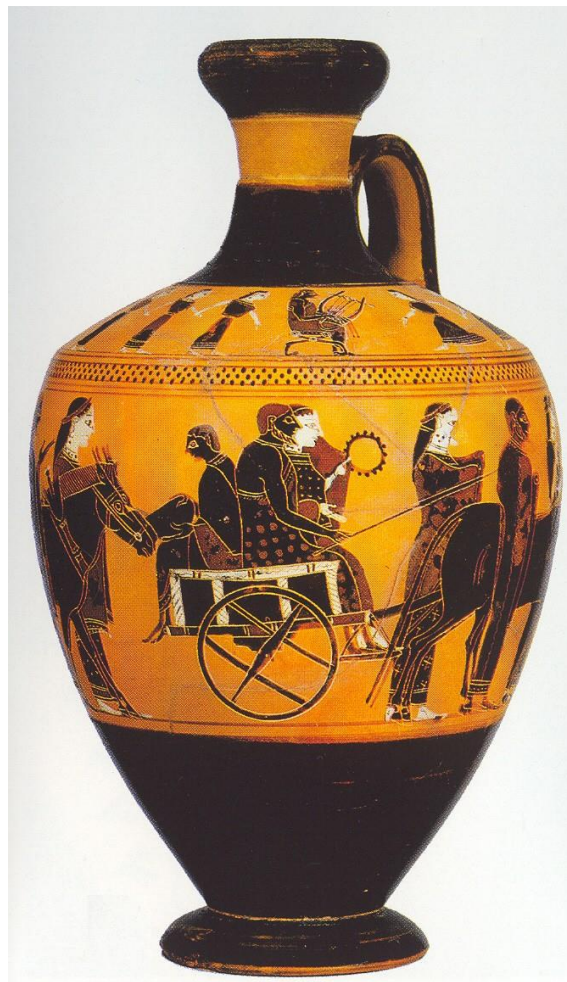
**Athenian black-figure
amphora. c. 530 BCE**



**Athenian black-figure
kylix. c. 540 BCE**



**Athenian black-figure
amphora. c. 540 BCE**



**Athenian black-figure
lekythos. c. 550 BCE**



**Athenian black-figure hydria.
c. 520-510 BCE**

Red-figure vase painting:



Red-figure vase painting:

- appeared in Athens around 530 BCE
- dominated Attic pottery until the end of the 4th century BCE
- depicts red, *reserved* figures (the colour of the clay) on a background which was painted black
- complete reverse of the black figure style
- uses painted lines or thick black brush marks ('relief lines') to complete the outline of the figure and render anatomical detail



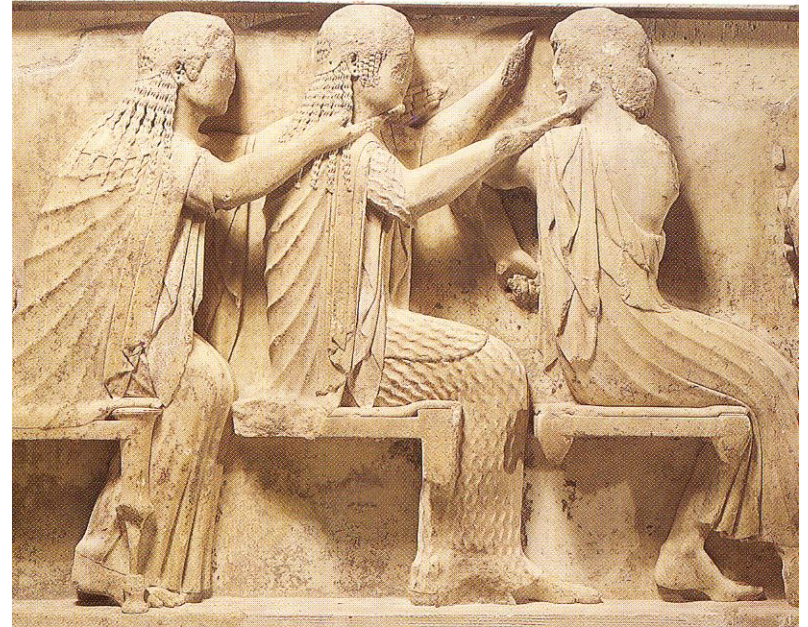
Red-figure vase painting:

- appeared in Athens around 530 BCE
- dominated Attic pottery until the end of the 4th century BCE
- depicts red, *reserved* figures (the colour of the clay) on a background which was painted black
- complete reverse of the black figure style
- uses painted lines or thick black brush marks ('relief lines') to complete the outline of the figure and render anatomical detail

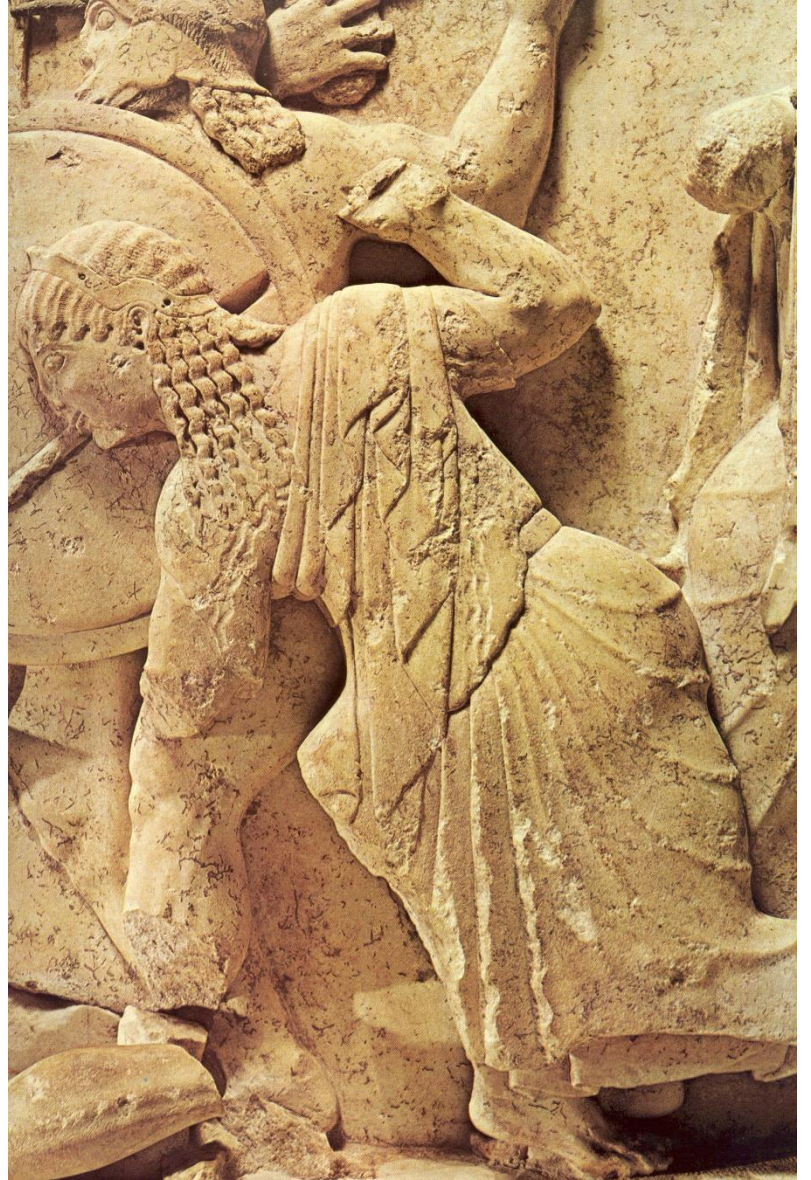






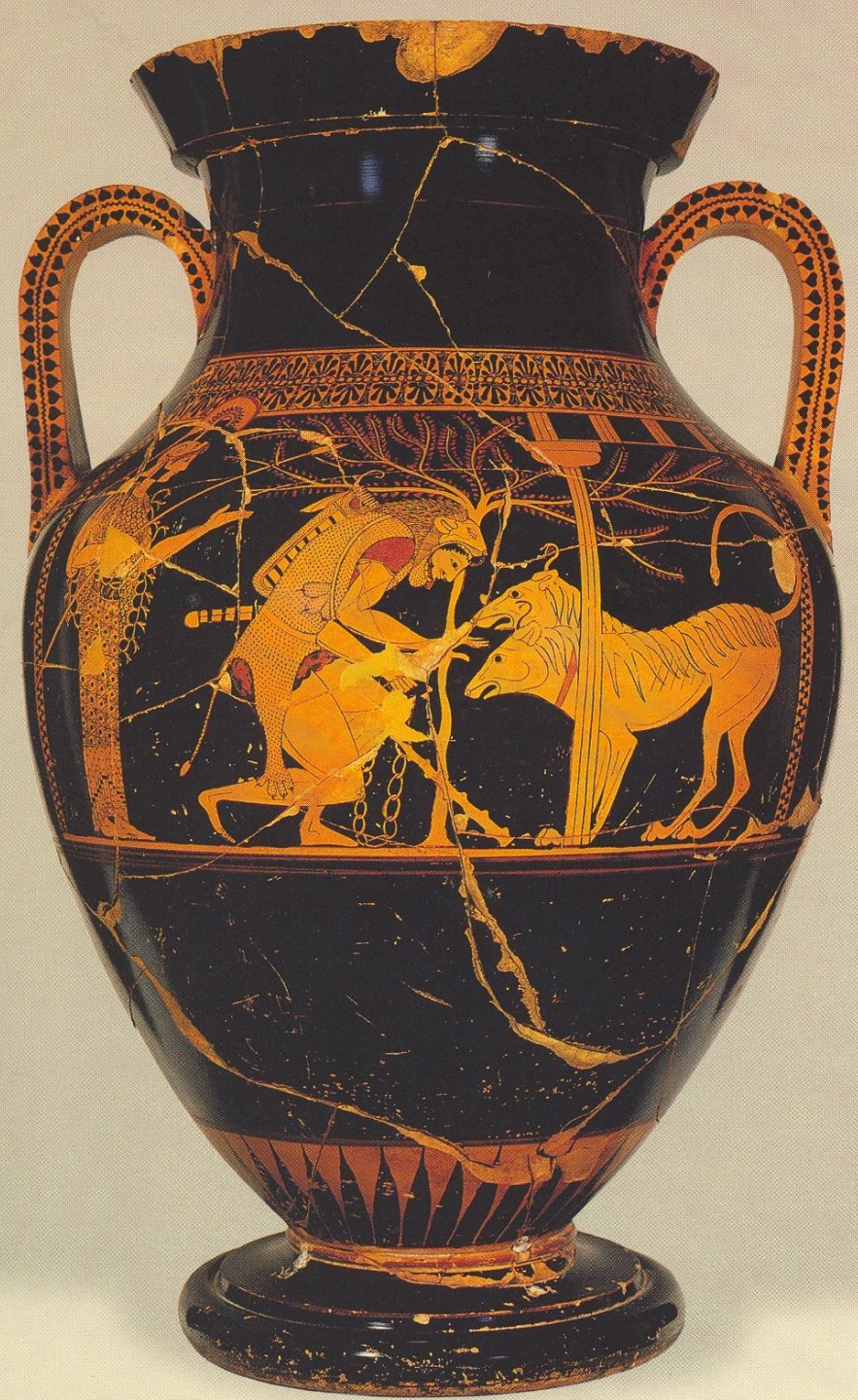


Delphi, the Siphnian Treasury.
c. 525 BCE





Αττικός «κόλλιπρος»
α. φέρει π. 5. 15 π.χ.



**Athenian “bilingual” amphora.
c. 520 BCE**

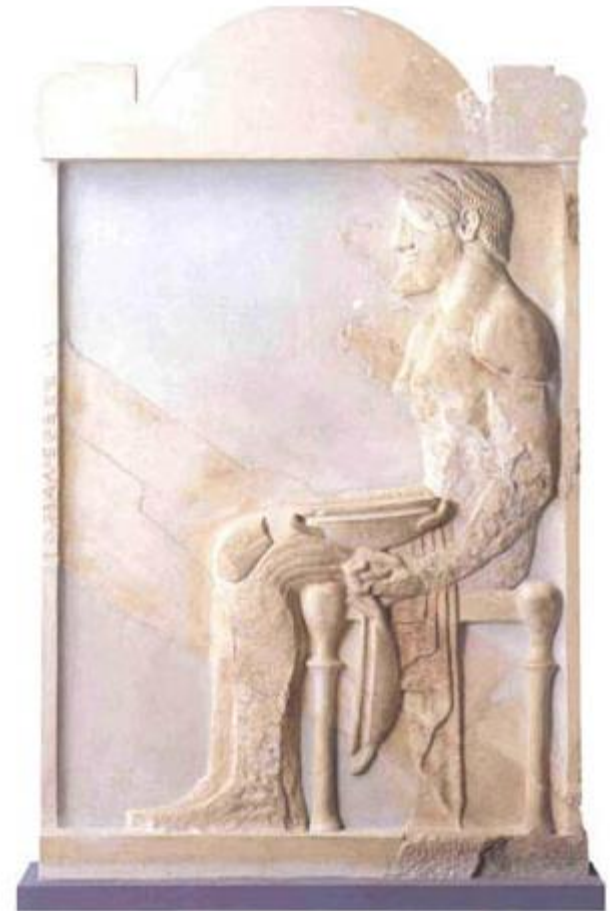


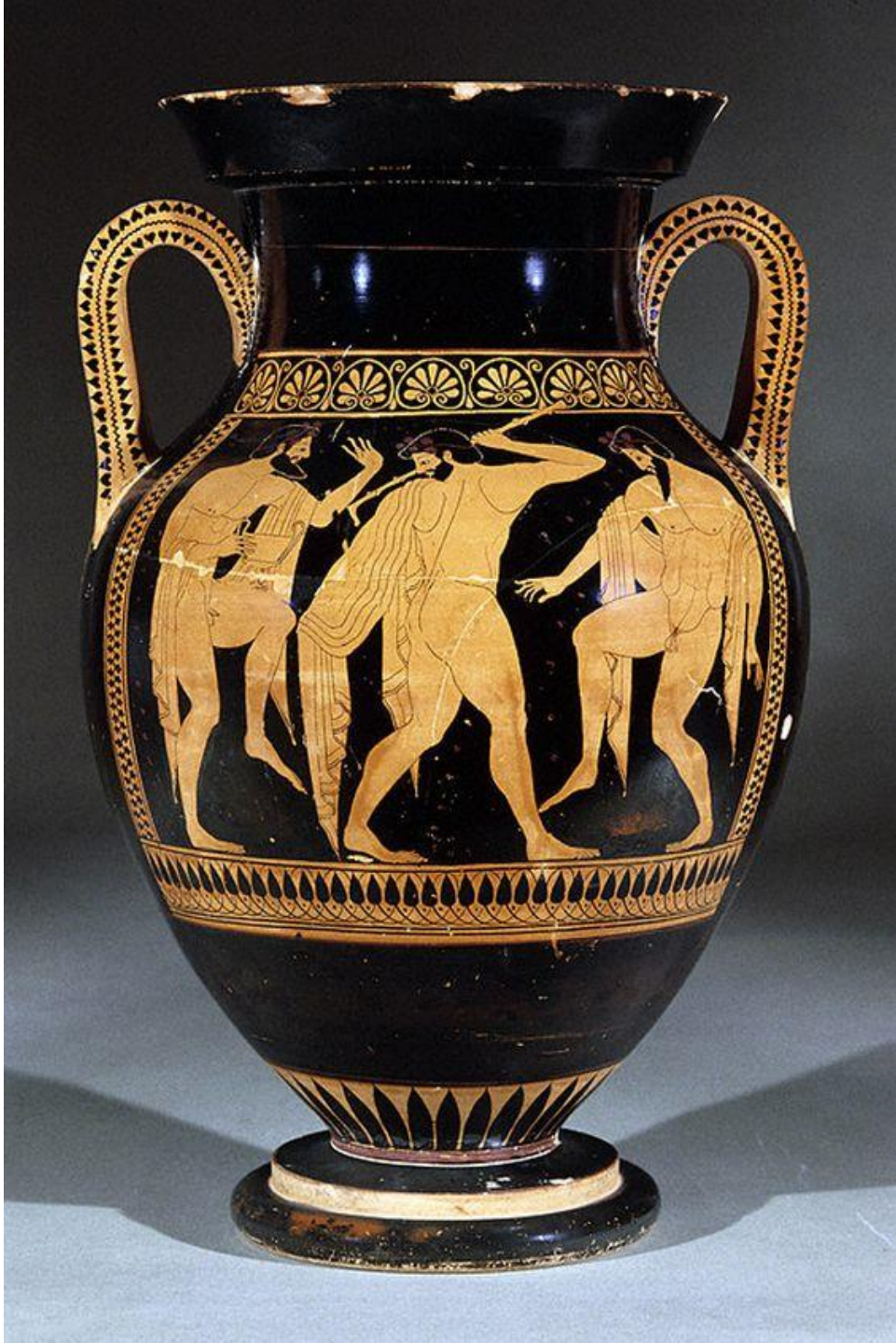
Athenian red-figure krater. c. 515-510 BCE





Athenian votive relief.
c. 510-500 BCE





ΕΑΡΡΩΘΗΕΝ
ΕΝΘΥΜΙΔΕΥΗΟΓΟΝΙΟ
ΗΟΣΟΝΔΕΠΟΤΕΕΝΦΡΟΝΙΟΝ

**Athenian red-figure amphora.
c. 510 BCE**



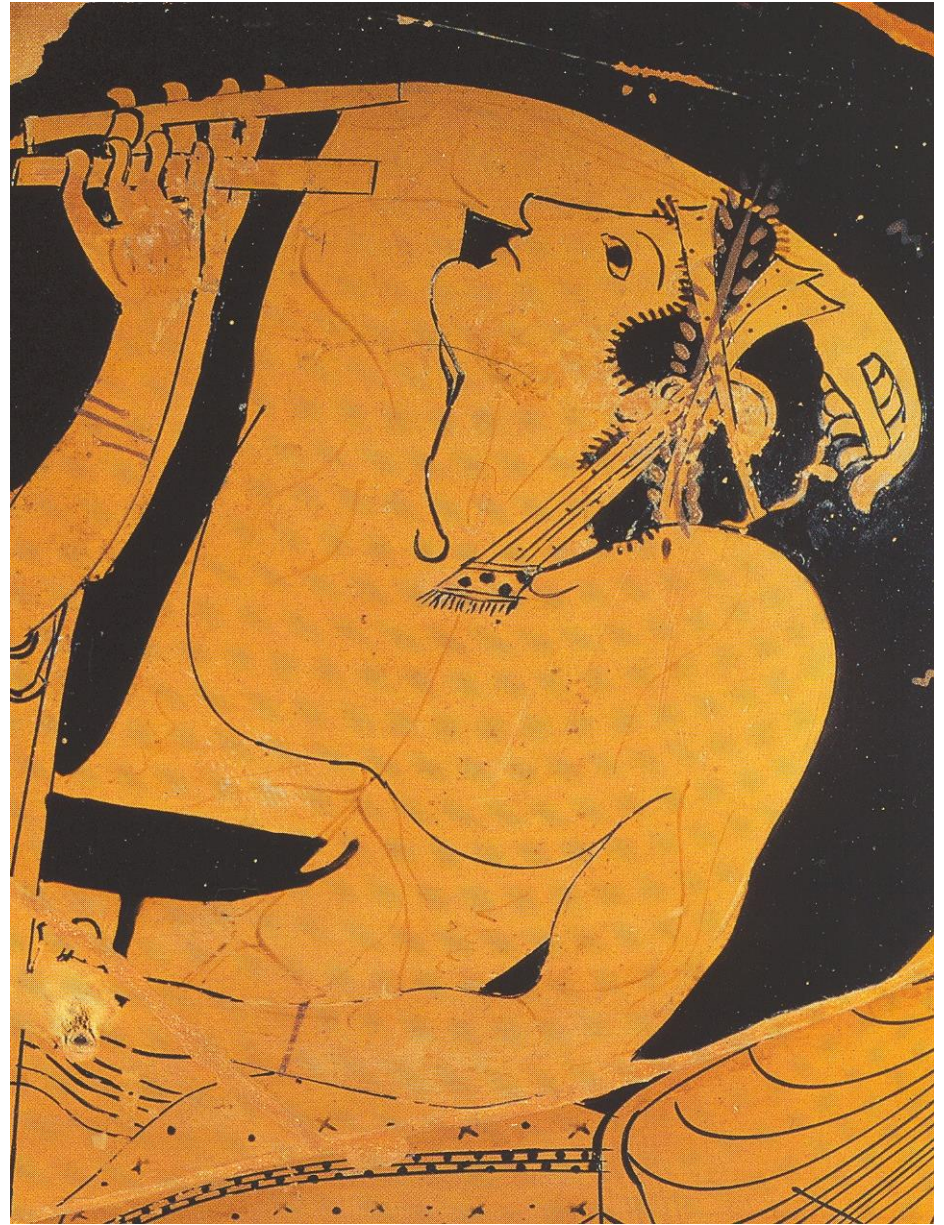
**Athenian red-figure hydria.
c. 510 BCE**



**Athenian red-figure hydria.
c. 510 BCE**



**Athenian red-figure
stamnos. c. 515 BCE**





**Athenian red-figure amphora.
c. 490 BCE**



Materiality

Reading:

Whitley 2018: 579-595 (in Smith & Plantzos).

Plantzos 2016: ch. 3.