



The Visual Cultures of Classical Greece

Prof. Dimitris Plantzos

The Visual Cultures of Classical Greece

- Introduction [3/10]
- What is “Greek” about Greek art [17/10]
- **Nemea – Olympia – Delphi field trip [20-21/10]**
- Narrativity and story-telling [24/10]
- Monumentality [25/10]
- The visual cultures of Greek pottery [31/10]
- **National Museum class [10/11]**
- **Midterms [14/11]**
- Materiality [21/11]
- Agency [28/11]
- *Mimesis* [5/12]
- Realism [12/12]
- **Acropolis Museum class [15/12; 15:00-17:00]**

The Visual Cultures of Classical Greece

- Introduction [3/10]
- What is “Greek” about Greek art [17/10]
- Nemea – Olympia – Delphi field trip [20-21/10]
- Narrativity and story-telling [24/10]
- **Monumentality [25/10]**
- The visual cultures of Greek pottery [31/10]
- National Museum class [10/11]
- Midterms [14/11]
- Materiality [21/11]
- Agency [28/11]
- *Mimesis* [5/12]
- Realism [12/12]
- Acropolis Museum class [15/12; 15:00-17:00]

Define the “monumental” in art?

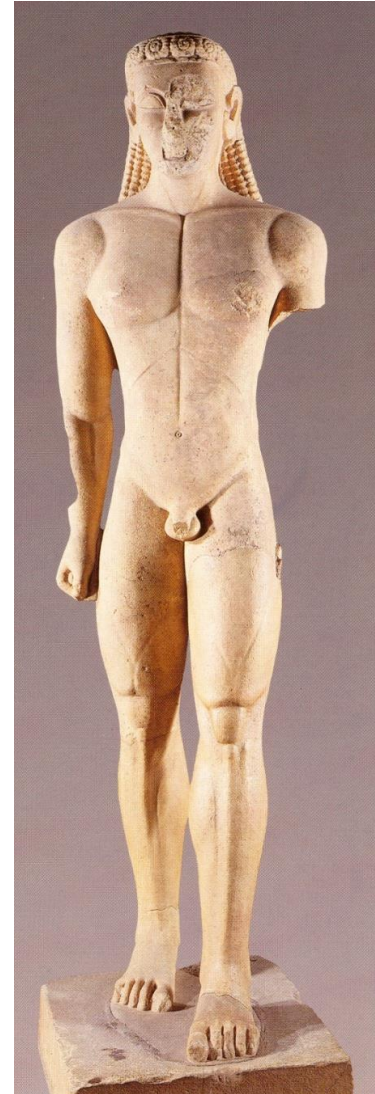
Sculpture survey:

Kaltsas 2007: 186-193

Define the “monumental” in art?

Define the “monumental” in art?

- Material



Define the “monumental” in art?

- Material
- Technical achievement



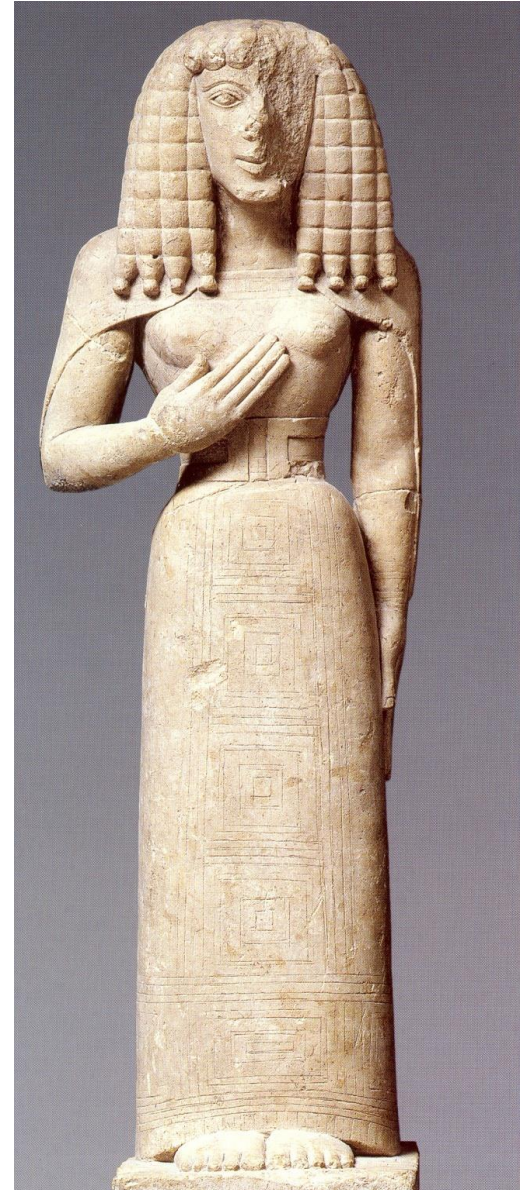
Define the “monumental” in art?

- Material
- Technical achievement



Define the “monumental” in art?

- Material
- Technical achievement
- Size



Define the “monumental” in art?

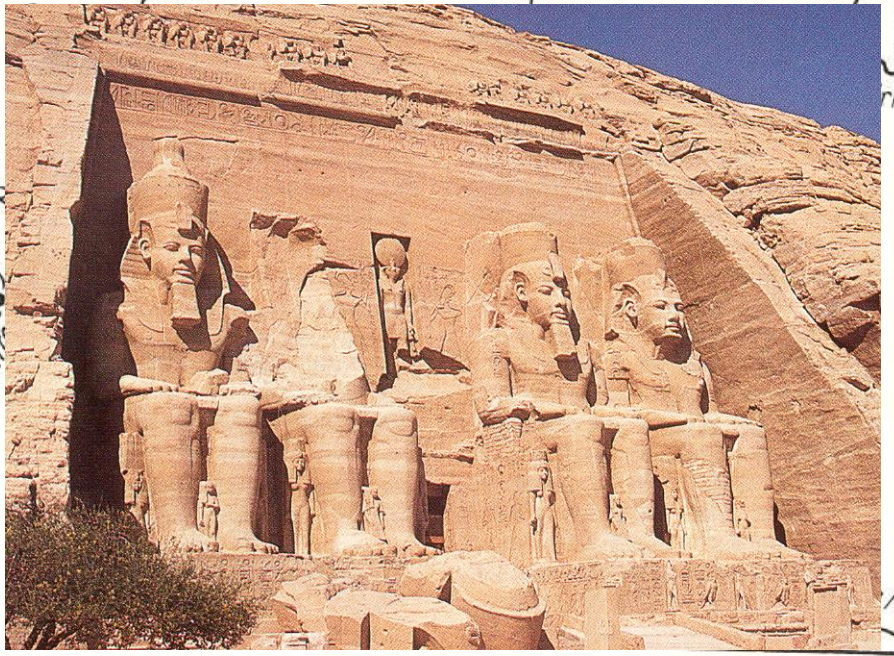
- Material
- Technical achievement
- Size



Define the “monumental” in art?

- Material
- Technical achievement
- Size
- Function





ΒΑΣΙΛΕΥΣ ΕΛΘΟΝΤΟΣ ΕΣΕΛΕΦΑΝΤΙΝΑΝ ΝΑΜΑΤΙΧΟ
 ΠΑΝΤΑ ΕΓΡΑΨΑΝ ΤΟΙΣ ΝΥΝΑ ΜΜΑΤΙΧΟΙ ΤΟΙΘΕΟΚΛΟΣ
 ΕΠΛΕΟΝΘΛΟΝΔΕΚΕΡΚΙΟΣ ΚΑΤΥΠΕΡΘΕ ΝΙΣΟΠΟΤΑΜΟΣ
 ΑΝΙΘΑΛΟΓΛΟΣΟΣ ΔΥΧΕ ΠΟΤΑΣΙ ΜΤΟΑΙΓ ΝΠΤΙΟΣ ΔΕ ΑΜΑΣΙΣ
 ΕΓΔΑΦΕΔΑΜΕΑΡΧΟΝ ΑΜΟΙΒΙΧΟ ΚΑΙ ΠΕΛΕΡΟΣΟΝΔΑΜΟ

BA
TA
EPI
AN
ETC

ΓΑΒΙΣ ΟΡΟΛΟΦΟΝΙΟΣ
ΣΥΝΝΑΜΜΑΤ

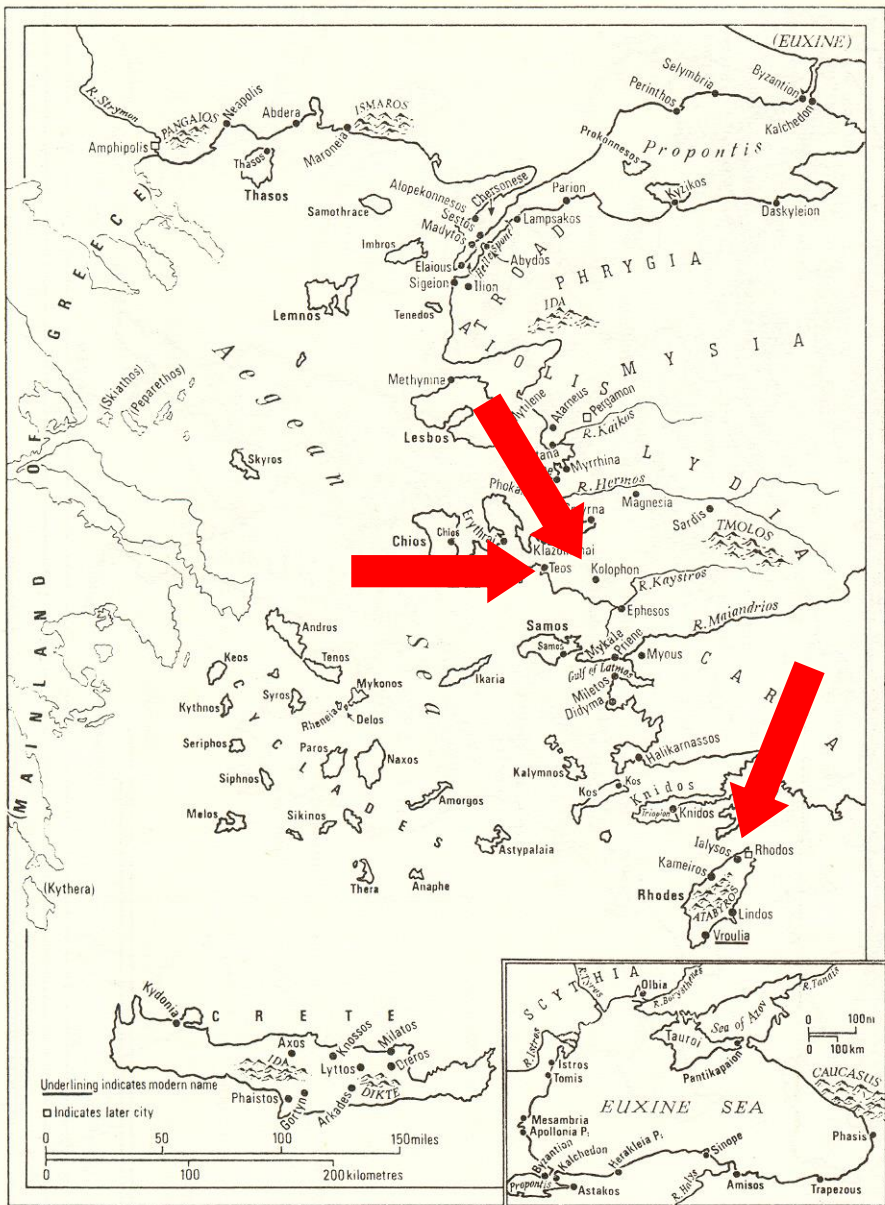
SIS
MO

ΑΝΑΧΖΑΝΟΡΕΡ Τ

ΒΟΙ ΛΛΥΖΙΟΣ ΒΟΚΑΒΑΖΙΑ

ΣΟΧΙΤΑΜΑΨ//////////////////////ΙΟΤΑΡΠΟΤ 10ΤΑΡΤΣΗΟΤΞΖΑ13ΒΣΥΠΠ

ΑΡΕΣΙΒΙΟΣ ΟΤΗΙΟΣ



ΓΑΒΙΚ ΟΡΟΛΟΦΟΝΙΟΖ
 ΖΥΝΝΑΜΜΑΤ

ΑΝΑΞΖΑΝΟΡΕΡ Τ

ΒΟΙΛΛΥΖΙΟΖ ΕΘΟΚΑΒΑΖΙΛ

ΣΟΧΙΤΑΜ ΑΨ //////////////////////////////////////////////////////////////////// ΜΟΤΑΡΠΟΤ ΙΟΤΑΡΤΣΗΟΝΤΕΤΑΤΕΒΣ

ΑΡΕΣΙΒΙΟΣ ΟΤΗΙΟΣ



MIKANDPBMAMEΦEKEMΘKTK OΓOIIIOXEAIPIBIPOBΔEIM
BTEHNAEJEZOEYEMEMHOMBIAPOXOZEPOEAMOTOBKIA
OBBBDOZOPHOOZK

The dedication by Nikandre. c. 650 BCE

kouros

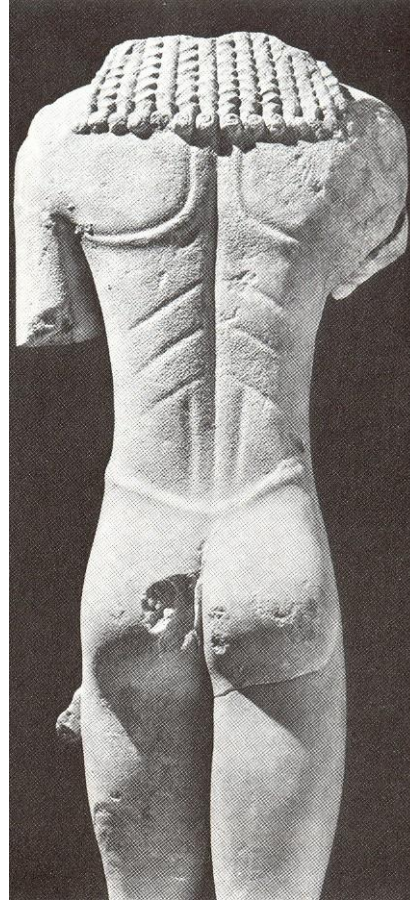
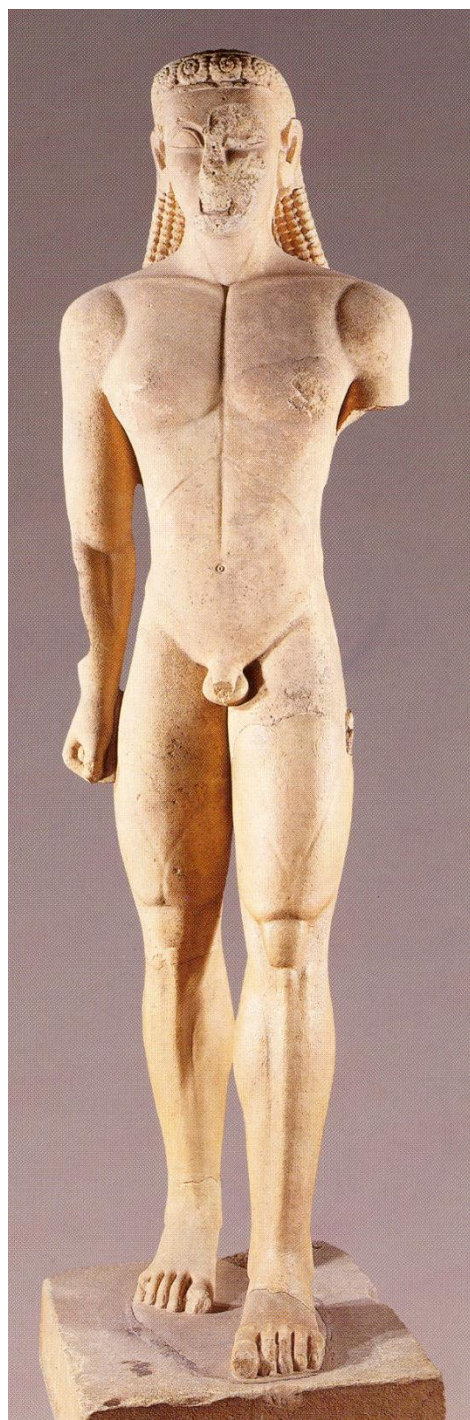


kore

kouros



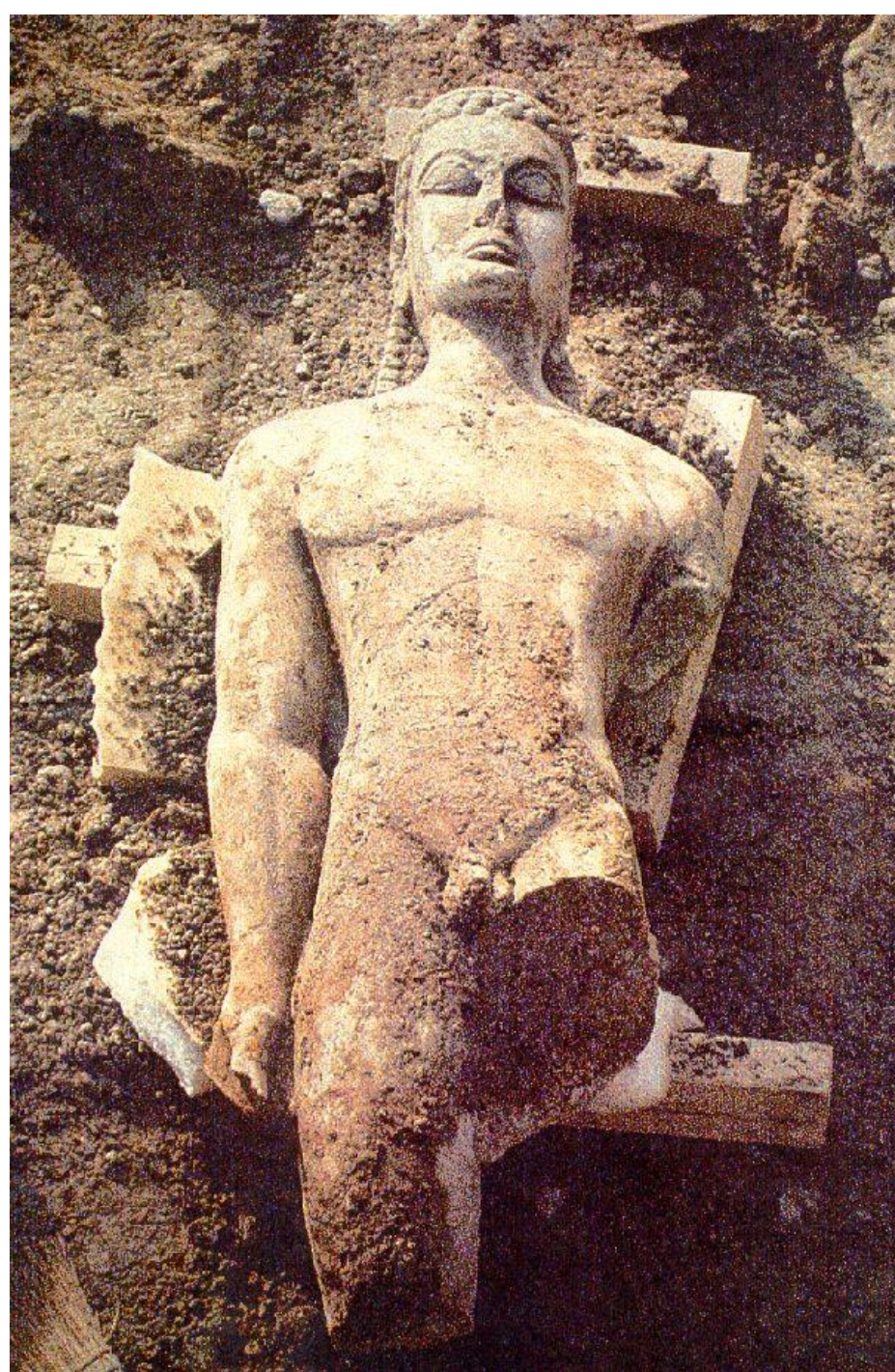
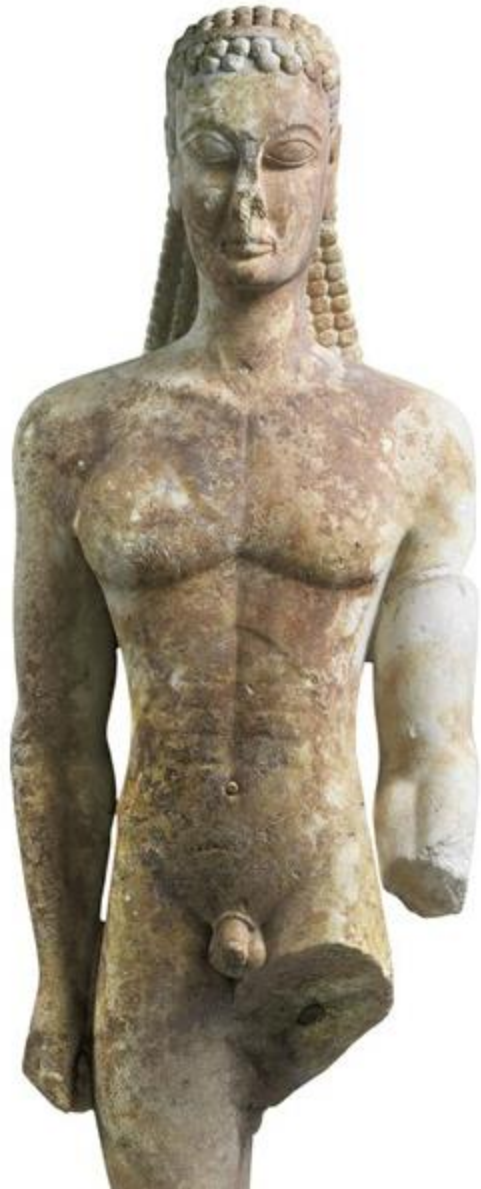
- one of the most characteristic statue types in Greek sculpture
- means 'young man', usually depicts youths
- appeared in the 7th century BCE and was used until the end of the Archaic period
- standing naked youth with hands hanging down and attached to the sides, left foot brought forward as if walking
- initially the type had long hair
- frequently life size or bigger (2, 3 and even 10 m tall).



The Sounion kouros. c. 600-590 BCE.

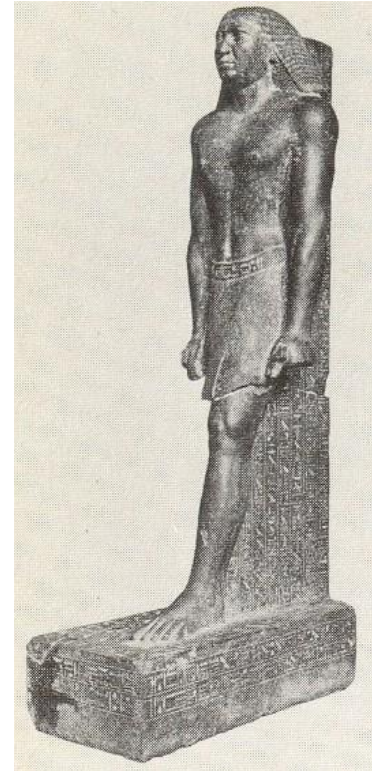
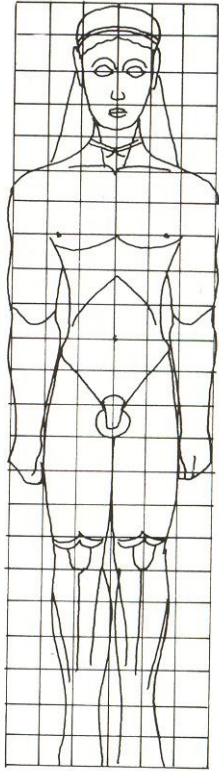
The Kerameikos kouros.

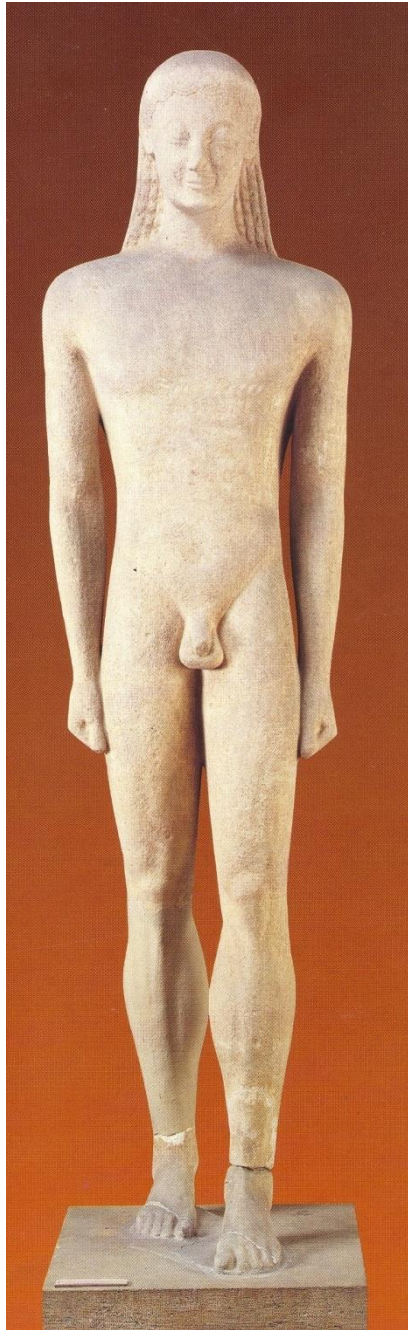
c. 600-580 BCE











The kouros of Melos.

c. 550 BCE

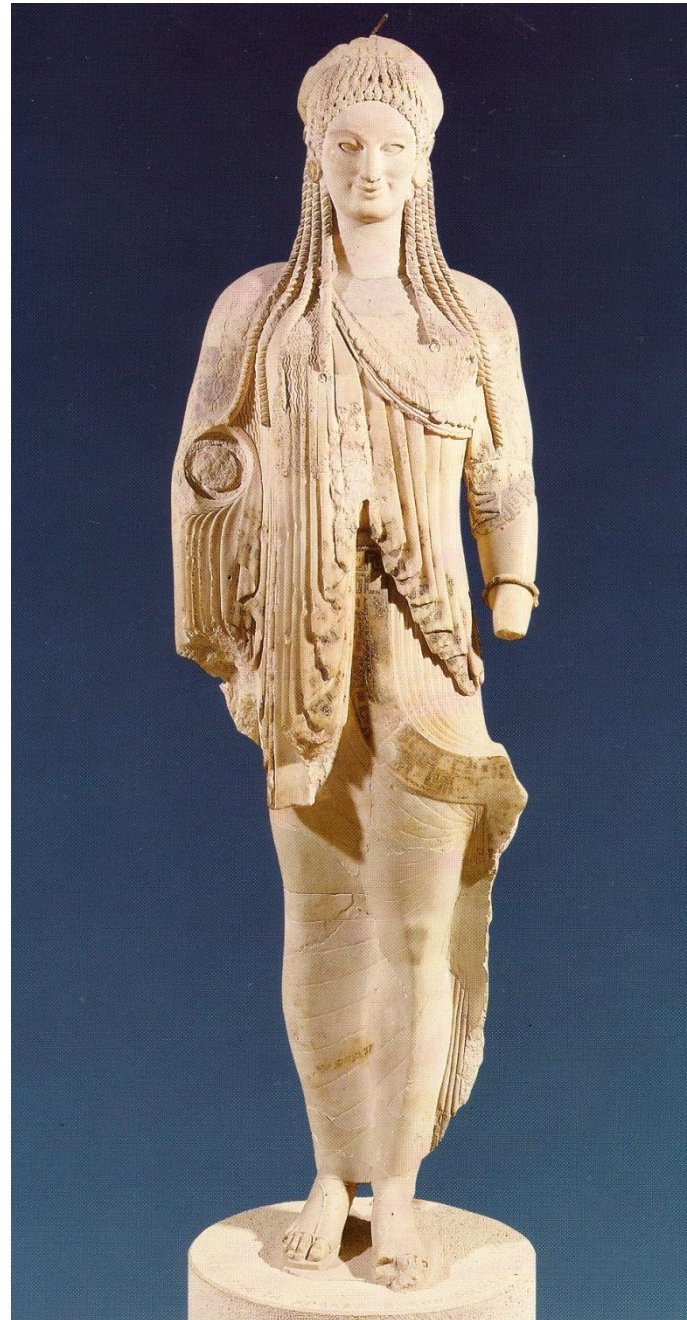


**East Greek kouros.
c. 530-20 BCE**

**The kouros of
Samos. c. 570 BCE**



- female version of the kouros
- young, unmarried girl
- appeared in the 7th century and was used until the end of the Archaic period
- standing young woman, usually dressed in a *chiton* and *himation*
- ornate hairstyle
- offering (dove, flower or fruit)
- precious jewellery



kore



c. 650 BCE



c. 650 BCE

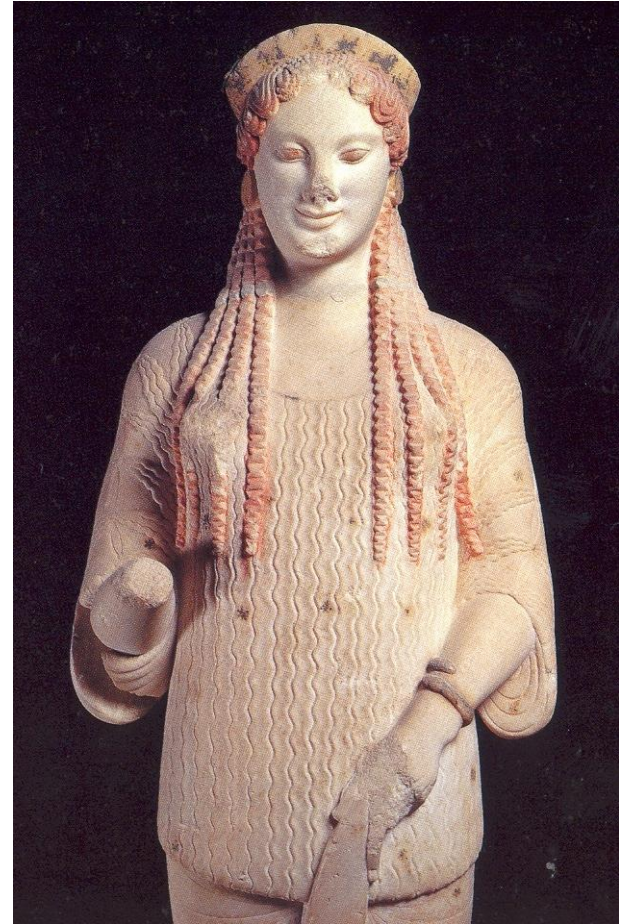


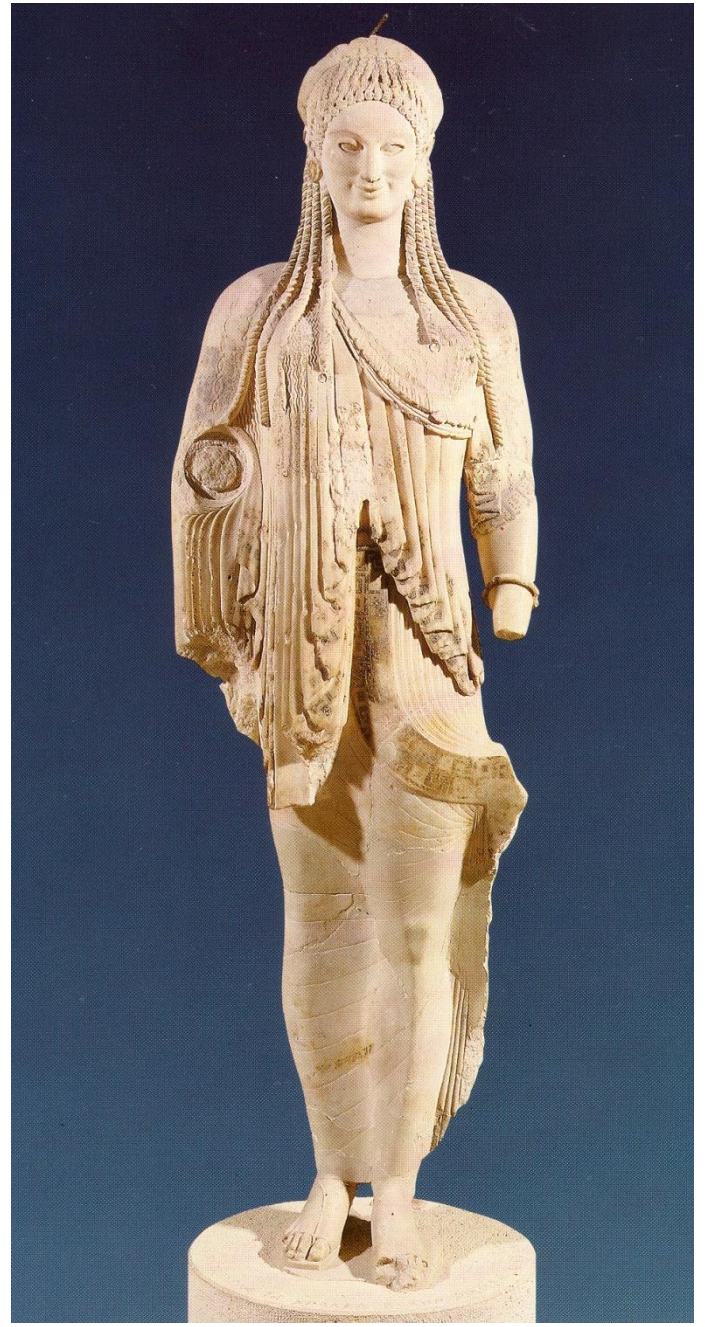
c. 560 BCE

ΧΗΡΑΜΝΗΞΜΑΝΞΘΙΚΕΝΤΗΡΗΙΑΓΑΛΜΑ

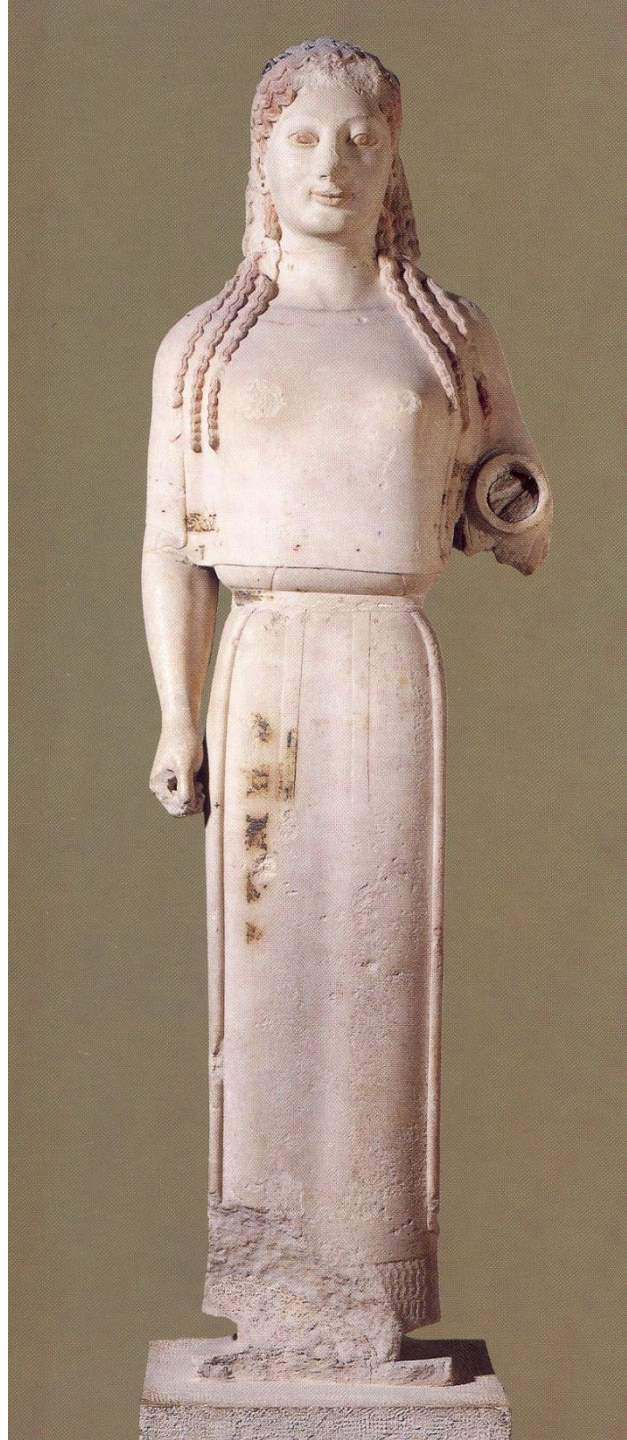
**A kore from Samos.
c. 560 BCE**



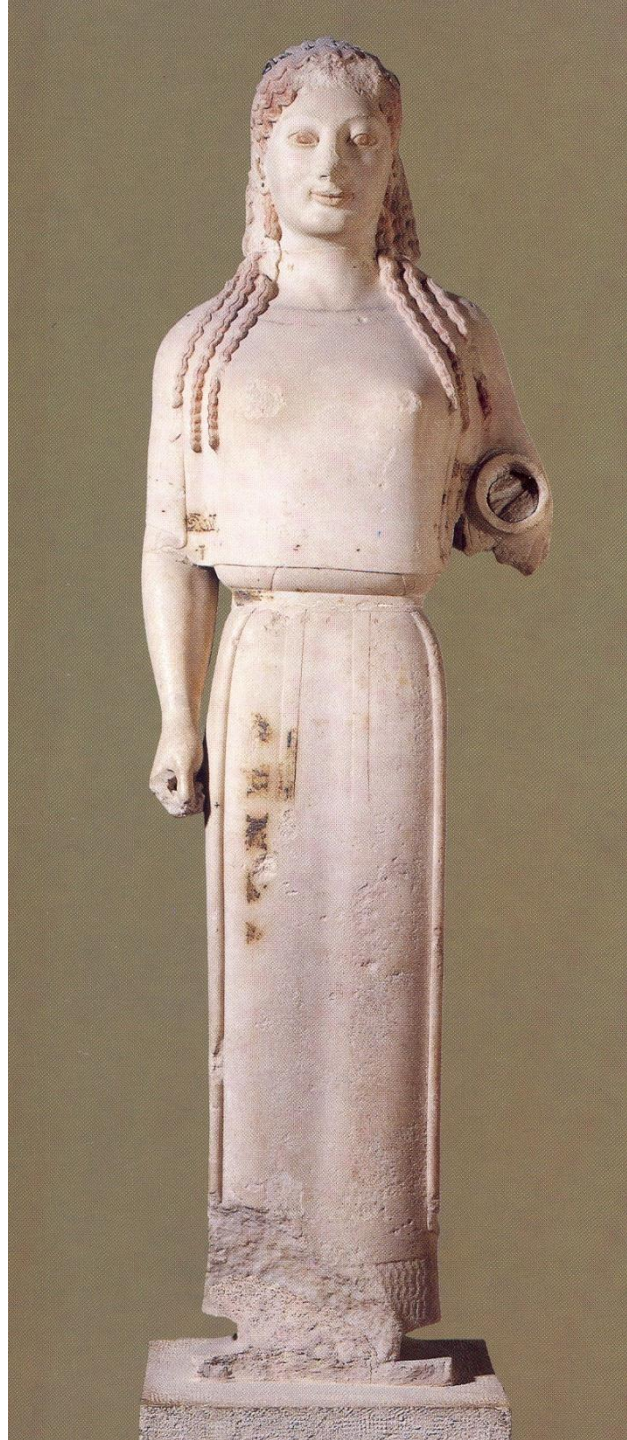




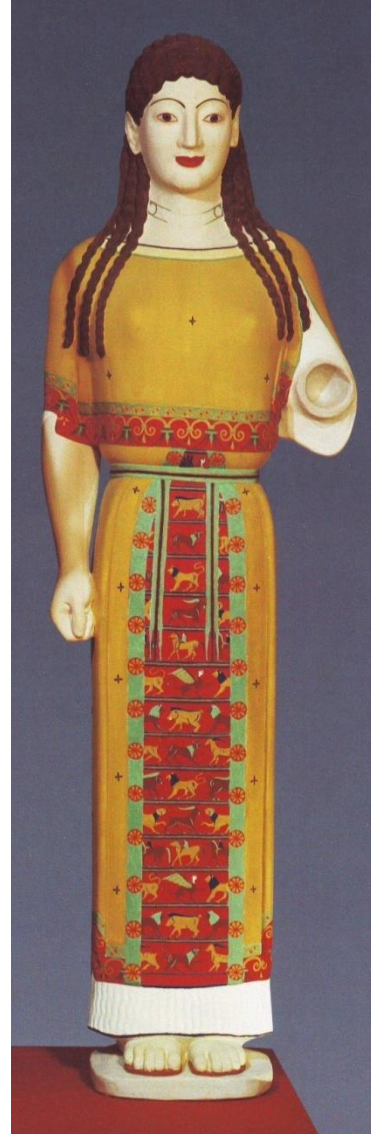




The Peplos-kore. C. 530 BCE









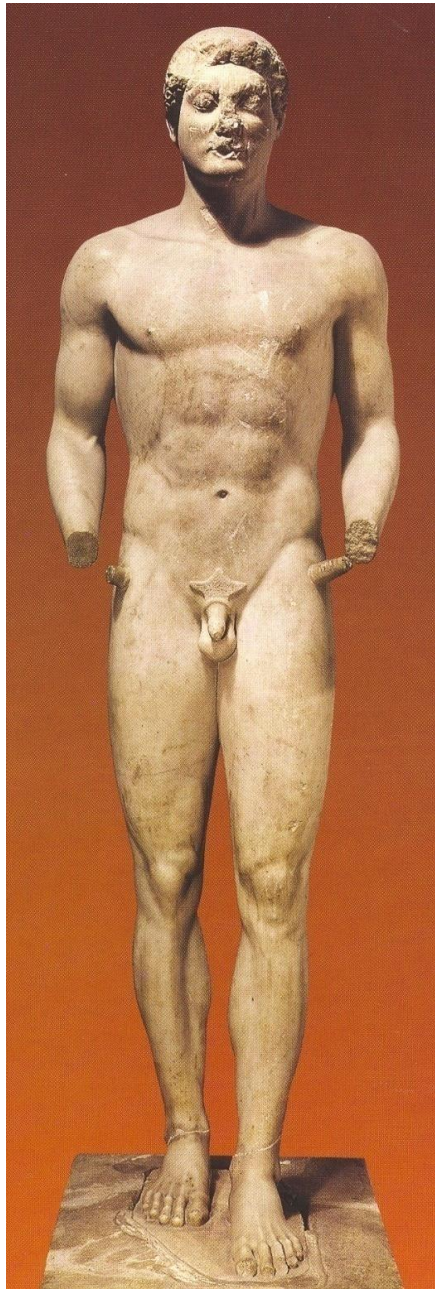
ΣΤΕΘΙ: ΚΑΙ ΟΙΚΤΙΡΟΜ ΚΡΟΙΣΟ
ΠΑΡΑΣ ΕΜΑΘ ΑΝΟΜΤΟΣΗΟΜ
ΓΟΤΕΜΙ ΓΡΟΜΑ+ΟΙΣ: ΟΛΕΣΕ
ΘΟΡΟΣ: ΑΡΕΣ







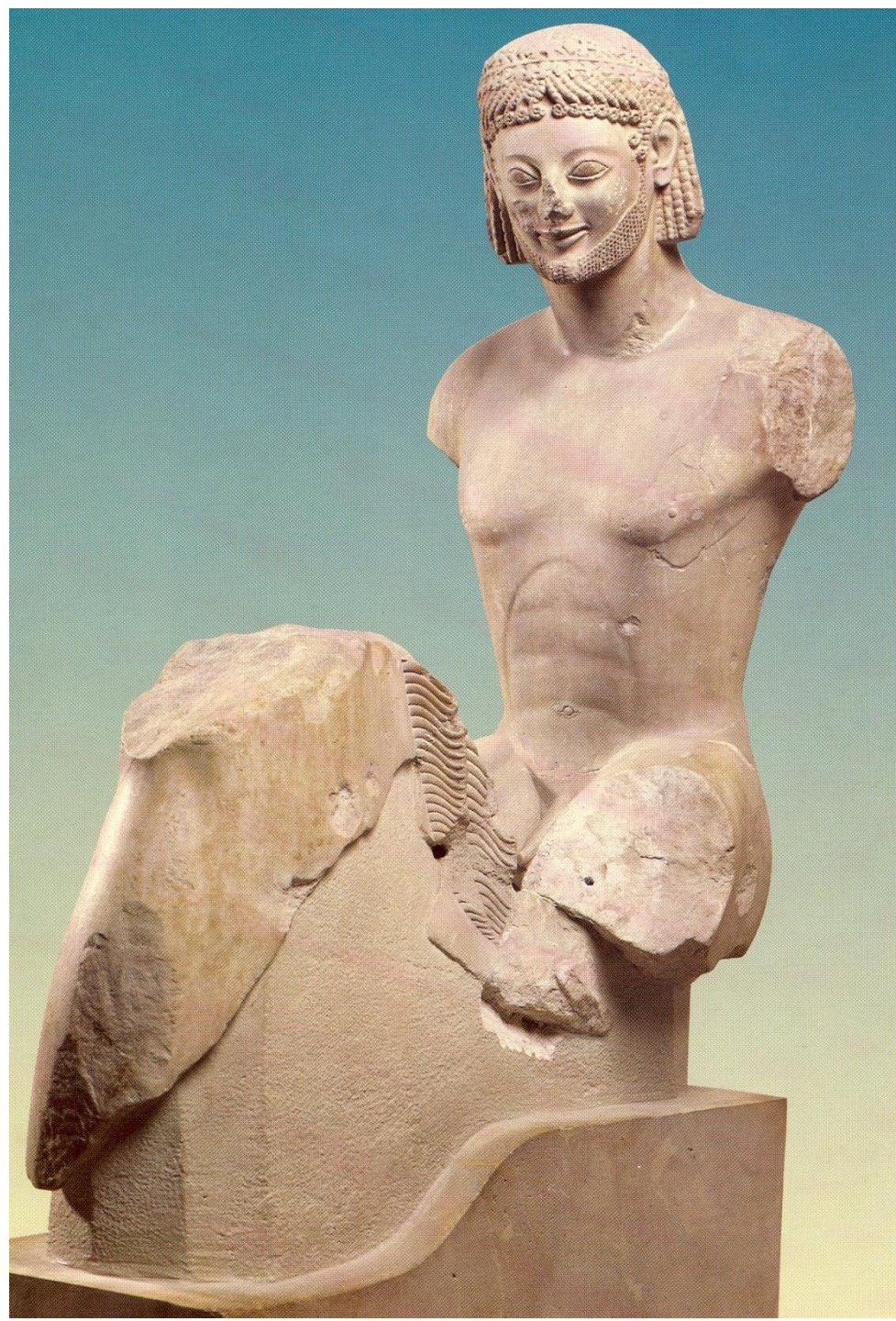
ΖΕΜΑΘΡΑΖΙΚΛΕΙΑΖ
ΚΟΡΕΚΕΚΛΕΖΟΜΑΙ
ΔΙΕΙΑΜΤΙΛΑΜΟ
ΠΑΡΑΘΕΟΜΤΟΥΤΟ
ΛΑΧΟΖΟΜΟΜΑ





**The Calf-bearer.
c. 570 - 560 BCE**

A horseman. c. 550 BCE.



The visual cultures of Greek pottery

Reading:

Plantzos 2016: 70-75; 86-103.

Survey:

Kaltsas 2007: 153-173