



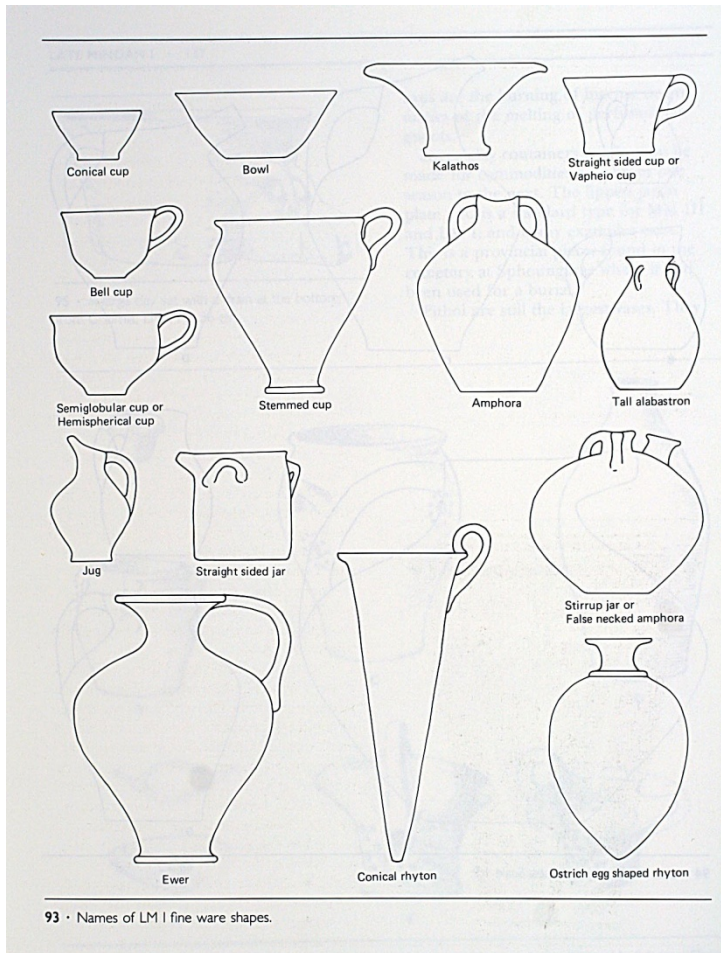
# ΠΡΟΪΣΤΟΡΙΚΗ ΑΡΧΑΙΟΛΟΓΙΑ

## ΙΑ 10

### Μινωική κεραμική

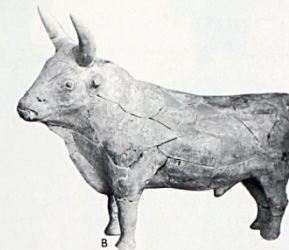
YM KEPAMEIKH

# YM IA - B

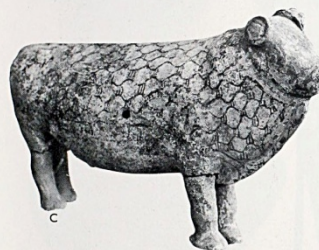




18 • Late Minoan IA-B vases. (A-D) LM IB Special Palatial Tradition, found at Agha Eirene, Keos. (A) Jug, Ht. 32.3 cm.; (B) Tall alabastron, Pres. ht. 14.1 cm.; (C) Basket-shaped vase, ht. 13.8 cm.; (D) Cup rhyton, Ht. 11 cm.; (E) Cycladic rhyton found at Phylakopi, Melos, imitating the Minoan style, LM I, Ht. 27.5 cm.; (F) Jar, Gournia, LM IB Standard Tradition, Ht. 15 cm.; (G) Jug, Pseira, LM IB Standard Tradition, Ht. 16.9 cm.; (H) Jar, Pseira, LM IA or B, Ht. 80 cm.; (I) Stirrup jar, Gournia, passage between Rooms Ab and Ac, LM IA or B, Ht. 42 cm.

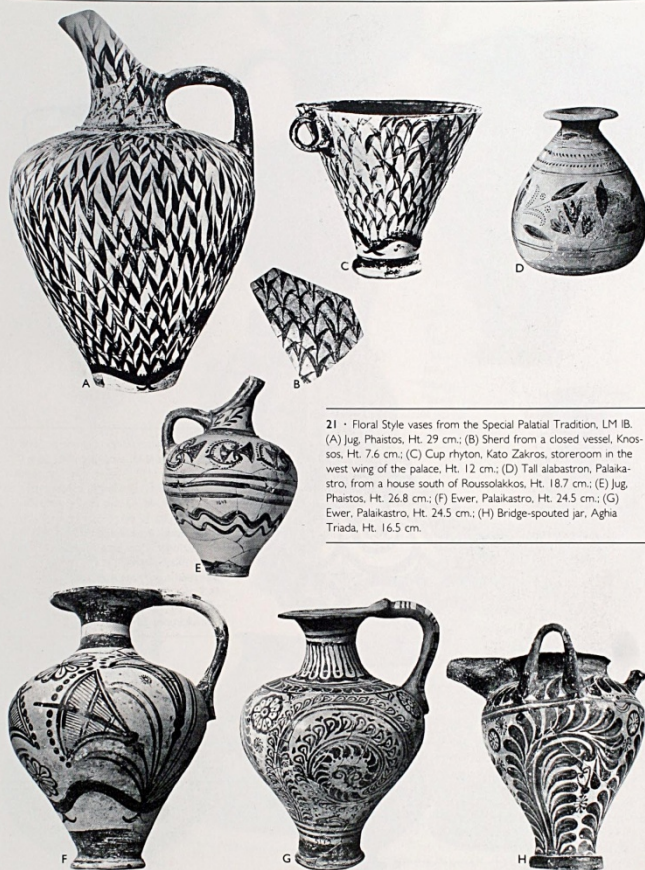


19 • Plastic vases and a large jar. (A) Bull's head rhyton, Mochlos, LM IB, Rest. ht. ca. 32 cm.; (B) Bull-shaped askos, Pseira, LM IB, Length 25.5 cm.; (C) Bull-shaped askos, Pseira, LM IB, Length 26 cm.; (D) Jar, Pseira, LM IA or B(?), Ht. 76 cm.; (E) Rim sherd decorated with a griffin, Malia, LM IB (?), Rest. dia. ca. 15 cm.



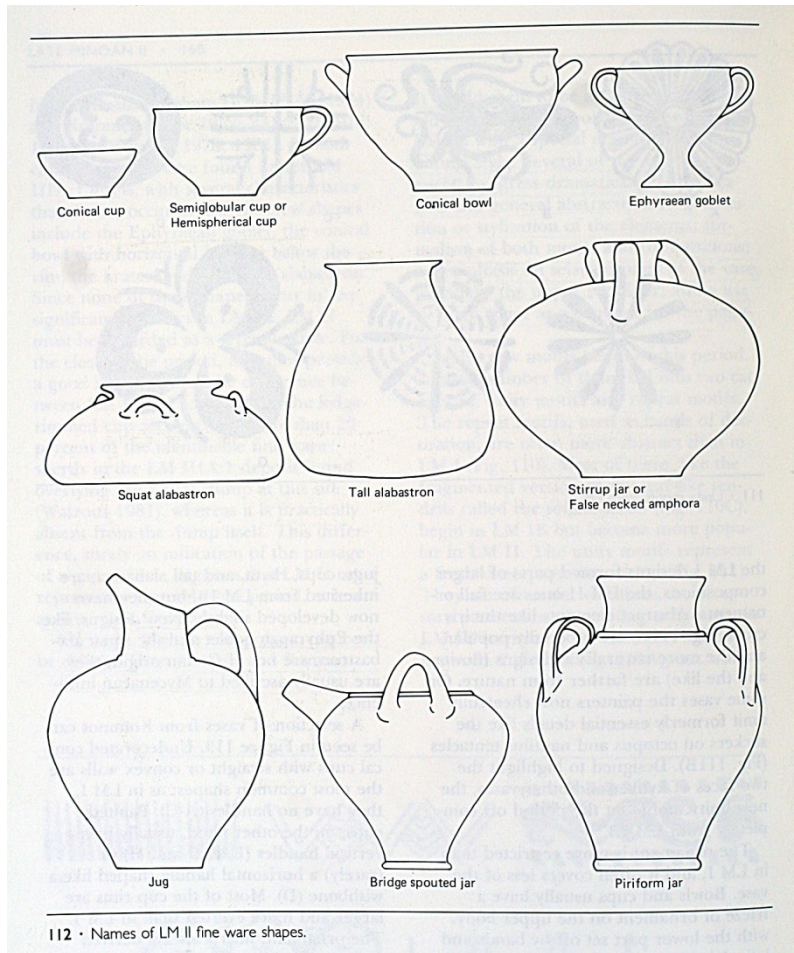


20 • Marine Style vases from the Special Palatial Tradition of LM IB, and a monumental painting from Knossos. (A) Ovoid rhyton, Psiera, Rest, ht. 27 cm.; (B) Ovoid rhyton, Palaikastro, ht. 31 cm.; (C) Ovoid rhyton, Palaikastro, ht. 28.5 cm.; (D) Jar, Nirou Khani, ht. 18 cm.; (E) Painting of fish and dolphins from Knossos, LM I; (F) Bridge-spouted jug, Mala, ht. 21.5 cm.; (G) Lentoid flask, Palaikastro, ht. 27 cm.; (H) Strrup jar, Kato Zakros, pantry of the Shrine, ht. 29 cm.



21 • Floral Style vases from the Special Palatial Tradition, LM IB. (A) Jug, Phaistos, ht. 29 cm.; (B) Sherd from a closed vessel, Knossos, ht. 7.6 cm.; (C) Cup rhyton, Kato Zakros, storeroom in the west wing of the palace, ht. 12 cm.; (D) Tall alabastron, Palaikastro, from a house south of Roussolakkos, ht. 18.7 cm.; (E) Jug, Phaistos, ht. 26.8 cm.; (F) Ewer, Palaikastro, ht. 24.5 cm.; (G) Ewer, Palaikastro, ht. 24.5 cm.; (H) Bridge-spouted jar, Aghia Triada, ht. 16.5 cm.

# YM II



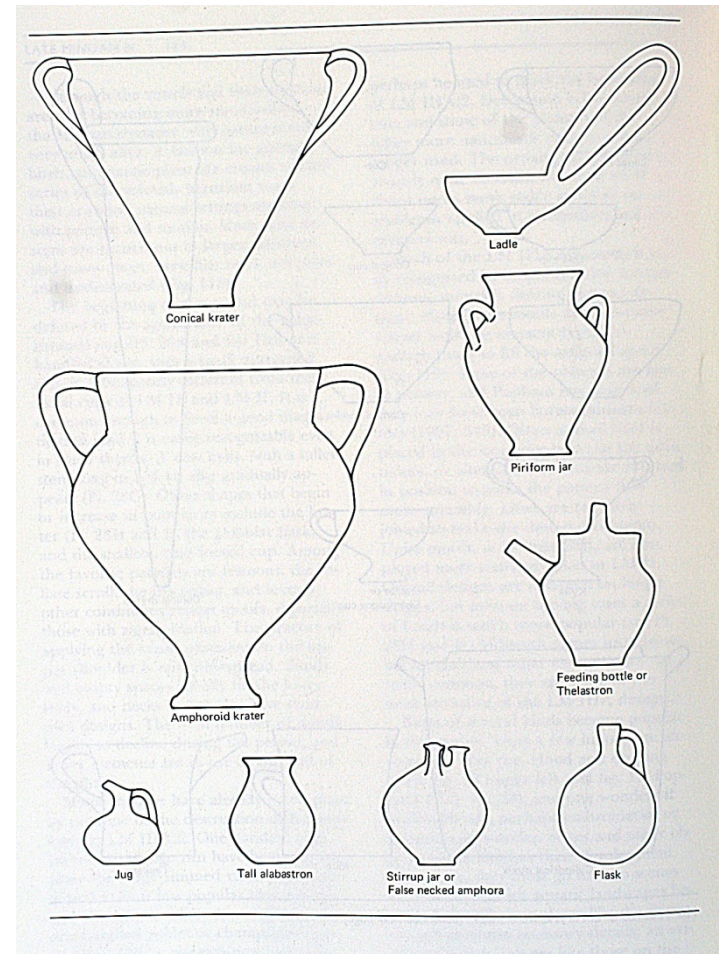
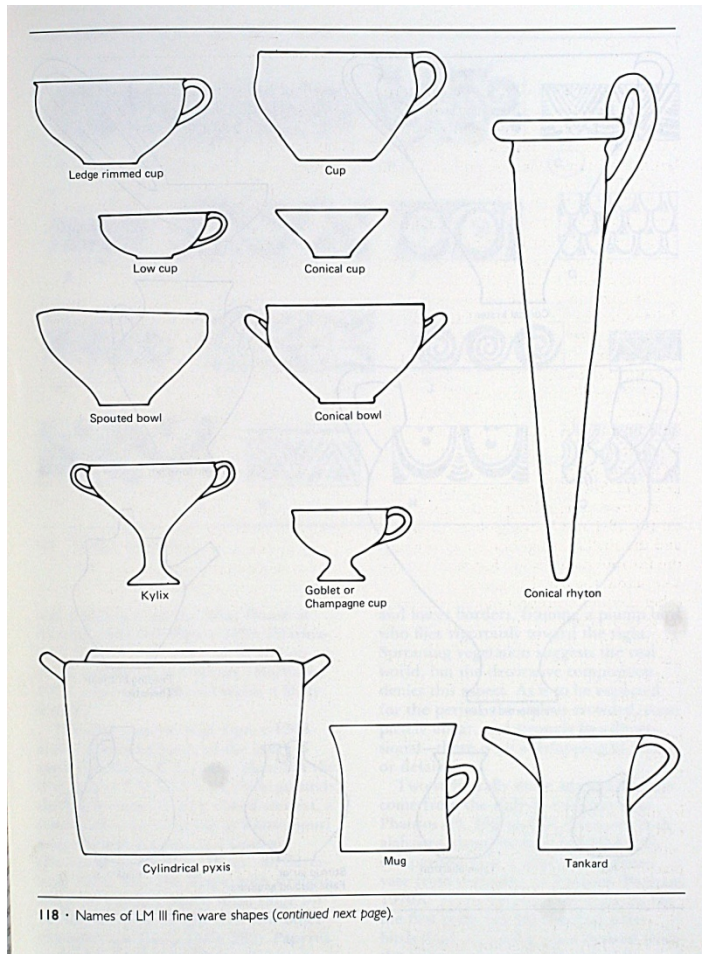


24 • Palace Style jars from Knossos. (A) LM II B, Ht. 60 cm.; (B) LM I-II.IIIA-1, Ht. 85 cm.; (C) LM II-III.A-1, Ht. 85 cm.; (D) LM II, Ht. 97 cm.



25 • Palace Style jars (A and C) and a Mycenaean jar from Prosymna (B). (A) Knossos, LM II, Ht. 134.5 cm.; (B) Prosymna, LH IIA-B, Ht. 51 cm.; (C) Katsampas, LM II, Ht. 47.5 cm.

# YM III







28 - Vases from the beginning of LM IIIA.2. (A) Ledge-rimmed cup, Knossos, Royal Villa, Ht. 8.5-9 cm.; (B) Ledge-rimmed cup, Knossos, Royal Villa, Ht. 8.5-9 cm.; (C) Alabastron, Phaistos, Kalyvia Cemetery, Ht. 23 cm.; (D) Alabastron, Phaistos, Kalyvia Cemetery, Ht. 28.5 cm.; (E) Jug, Knossos, Tomb of the Double Axes, Ht. 35 cm.; (F) Jug, Knossos, Royal Villa (the spout is restored too long); (G) Kylix, Knossos, S. E. House; (H) Amphoroid krater, Knossos, Eighth Magazine and the South Propylaeum; (I) Conical krater, Knossos, Passage of the Demon Seals.



29 - LM III vases. (A) Jug, Knossos, Passage of the Demon Seals, early LM IIIA.2; (B) Alabastron, Palaikastro, LM IIIA.1 to early IIIA.2, Ht. 18 cm.; (C) Strrup jar, Knossos, Zapher Papouira Cemetery Tomb 76, LM IIIA.1 to early IIIA.2, Ht. 26 cm.; (D) Bridge-spouted jug, Knossos, South Front of the Palace, early LM IIIA.2; (E) Bowl, Perivolia Cave, LM III B, Ht. 10.3 cm.; (F) Lid, probably from a pyxis, Knossos, area of the Shrine of the Double Axes, LM IIIA.1 to early IIIA.2; (G) Bowl, Knossos, LM III B, Ht. 9.5 cm.; (H) Incense burner, Palaikastro, South Cemetery, LM IIIA, Ht. 10 cm.; (I) Cup, Knossos, LM III B; (J) Kylix, Ligortynos, LM III B, Ht. 13.7 cm.; (K) Amphoroid krater, Ligortynos, LM IIIA.2-III B, Ht. 40.8 cm.

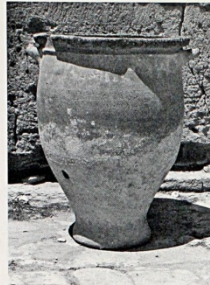




30 - Vases from late LM IIIA.2-III.B. (A) Amphoroid krater, Ligortynos, LM IIIA.2, Ht. 32.2 cm.; (B) Other side of A; (C) Stirrup jar, Katsampas, Tomb Eta, LM IIIA.2-III.B, Ht. 37 cm.; (D) Stirrup jar, Knossos, Zapher Papoura Cemetery, Tomb 25, LM IIIA.2-III.B, Ht. 13.3 cm.; (E) Stirrup jar, Knossos, LM III.B, Ht. 26.2 cm.; (F) Stirrup jar, Knossos, Area of the wheat on the S.E. front of the Palace, LM III.B, Ht. 14 cm.; (G) Stirrup jar, Episkopi, LM III.B, Ht. 17 cm.; (H) Stirrup jar, Knossos, Zapher Papoura Cemetery, Tomb 54, LM IIIA.2-III.B, Ht. 13 cm.; (I) Stirrup jar, Episkopi, LM IIIA.2-III.B, Ht. 12.5 cm.; (J) Stirrup jar, Episkopi, LM IIIA.2-III.B, Ht. 7.5 cm.; (K) Tankard, Knossos, S.E. House, LM III.B; (L) Spouted bowl, Gournia, LM IIIA.2-III.B, Ht. 9.3 cm.; (M) Mug, Palakastro, street between blocks beta and gamma, LM IIIA.2-III.B, Ht. 10.7 cm.; (N) Pyxis, Gournia, Asa Langada Cemetery, Tomb II, LM III.B, Ht. 24 cm.; (O) Conical rhyton, Palakastro, LM IIIA.2-III.B, Pres. ht. 22 cm.; (P) Wide-mouthed rhyton, Ligortynos, LM III.B, Ht. 12.3 cm.



31 - Vases, LM IIIA.2-III.C. (A) Incense burner, Palakastro, LM III.B, Ht. 12 cm.; (B) Anthropomorphic vessel in the form of a nude female figure, Gournia, House E, LM IIIA.2-III.B, Ht. 18.1 cm.; (C-D) Calf's head rhyton, Ligortynos, LM III.B, Ht. 16.4 cm.; (E) Rhyton, Moulana, LM III.C (?), Ht. 44 cm.; (F) Krater, Knossos, LM III.C, Rest. ht. 34.5 cm.; (G) Cup sherd, Knossos, Little Palace, LM IIIA.2-III.B, Width 10 cm.; (H) Stirrup jar, Knossos, south niche of the fore-hall, Royal Tomb of Isopata, LM III.C, Ht. 13 cm.; (I-J) Tankard, Psychro Cave ("Dictaean Cave"), LM III.C, Ht. 17 cm.



A



B



C



D



E



F



G

26 • Jars and larnakes. (A) Pithos, Phaistos, palace courtyard, LM IIIB, Ht. 65 cm; (B) Jar, Phaistos, palace courtyard, LM IIIB, Ht. 55 cm.; (C) Pithos, Phaistos, palace courtyard, LM IIIB, Ht. 96.5 cm.; (D) Pithos, Phaistos, palace courtyard, LM IIIB, Ht. 80 cm.; (E) Chest larnax, Vaslika Anogha, LM IIIA, Ht. to top of lid 97 cm.; (F) Tub larnax, Alatosmoun near Gourmia, LM IIIB, Ht. 46.5 cm.; (G) Chest larnax, Armenoi Retthymnes, LM IIIA, Ht. to top of lid 130 cm.

# ΥΜ ΙΙΙ - ΥΠΟΜΙΝΩΙΚΗ

