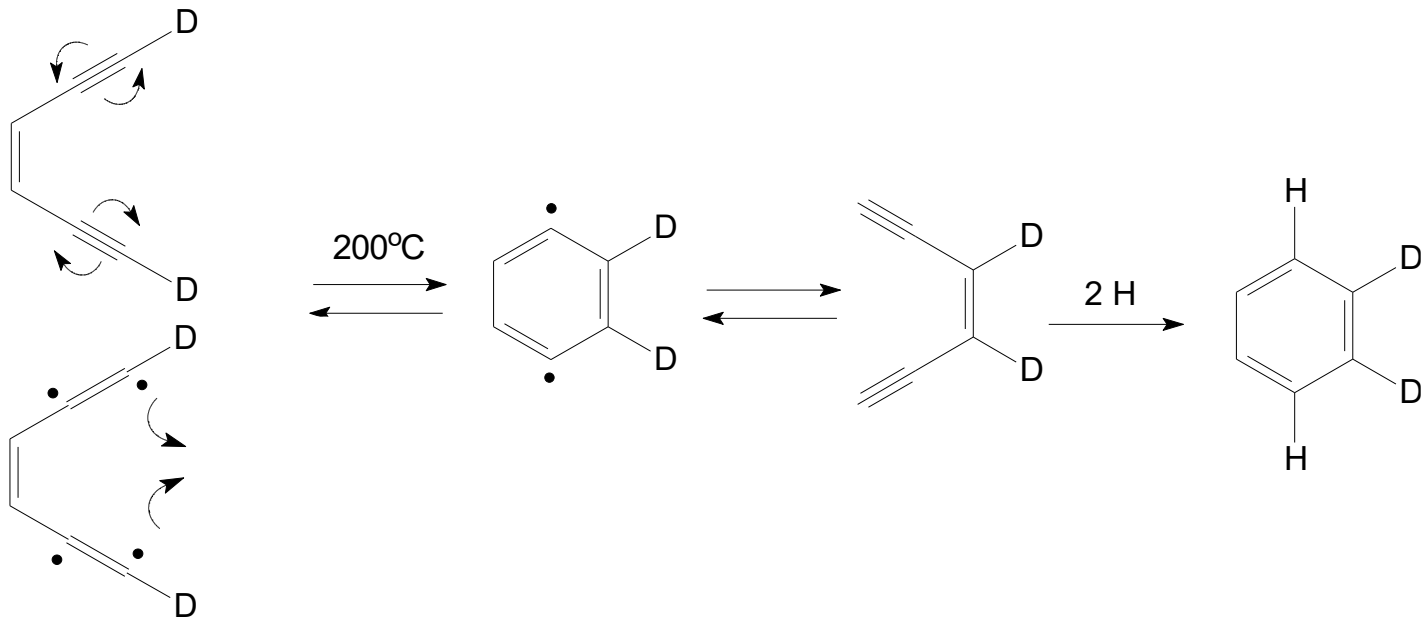


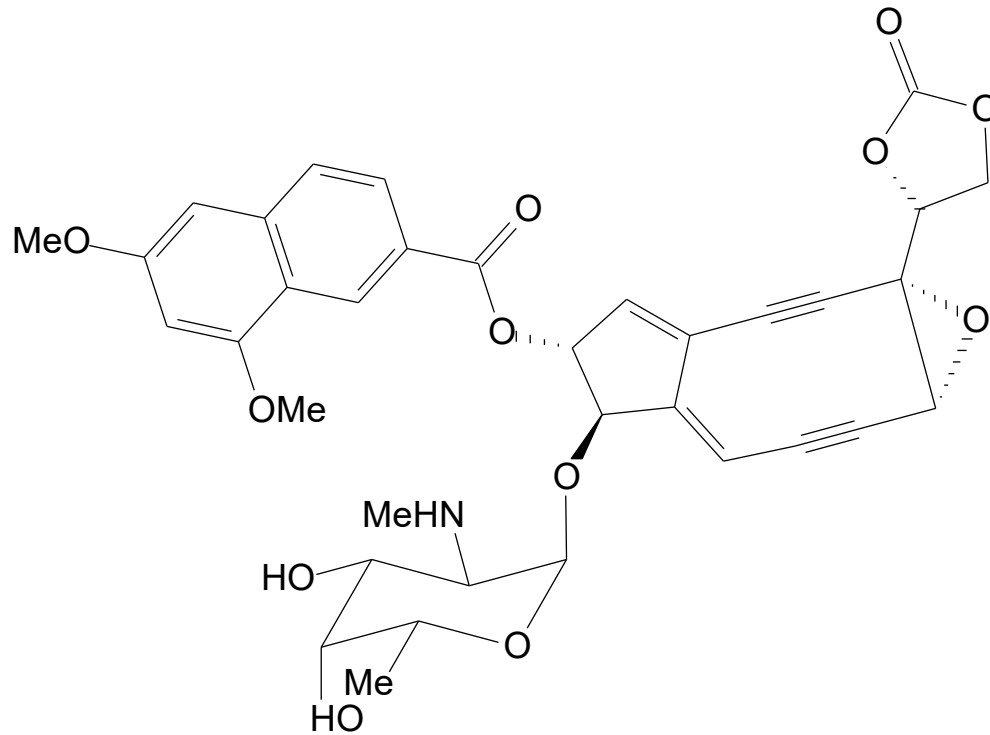
Μόρια που προκαλούν σχάση της αλυσίδας του DNA

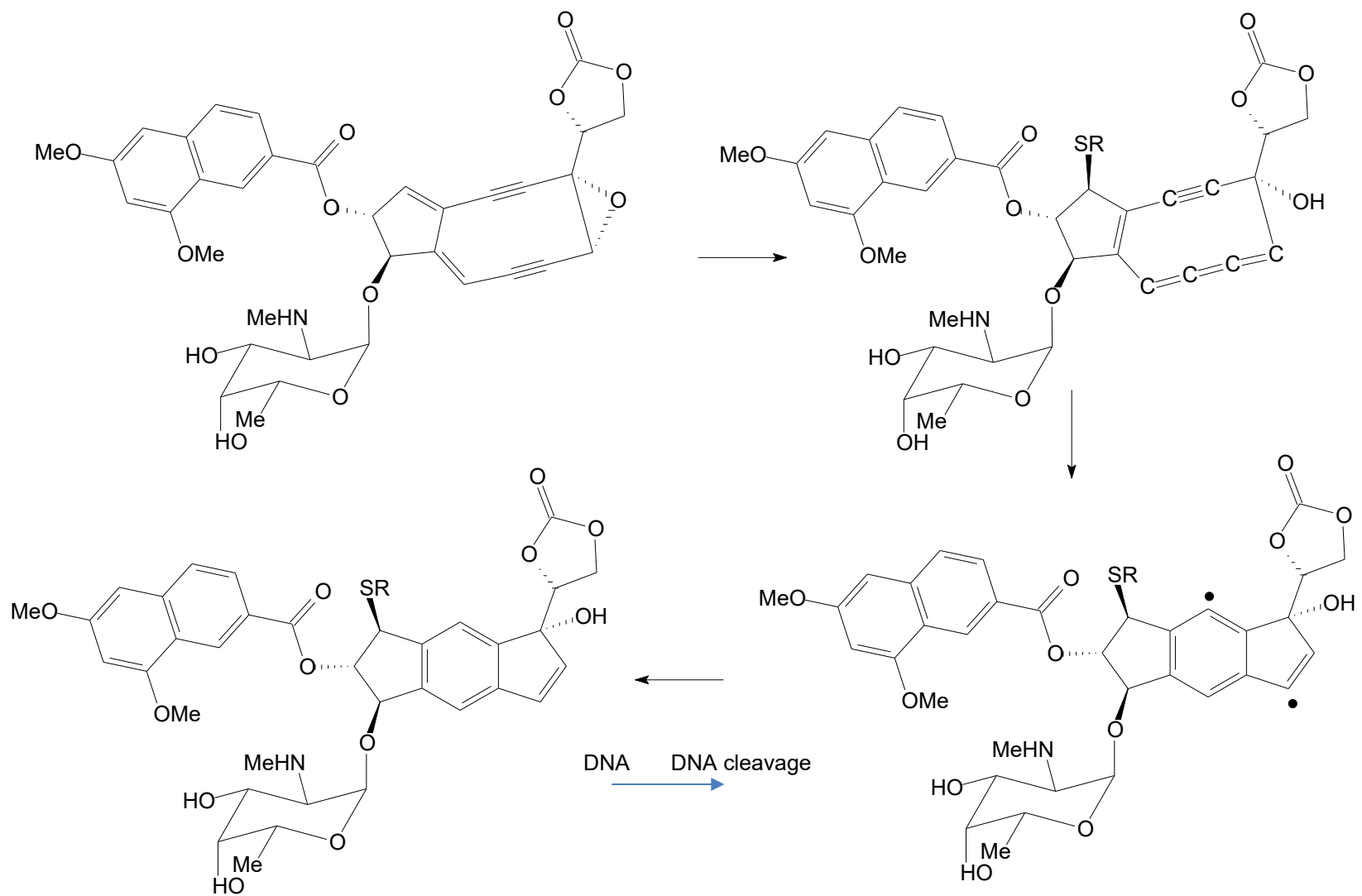
Bergman cycloaromatization



Μόρια που προκαλούν σχάση της αλυσίδας του DNA - enediynes

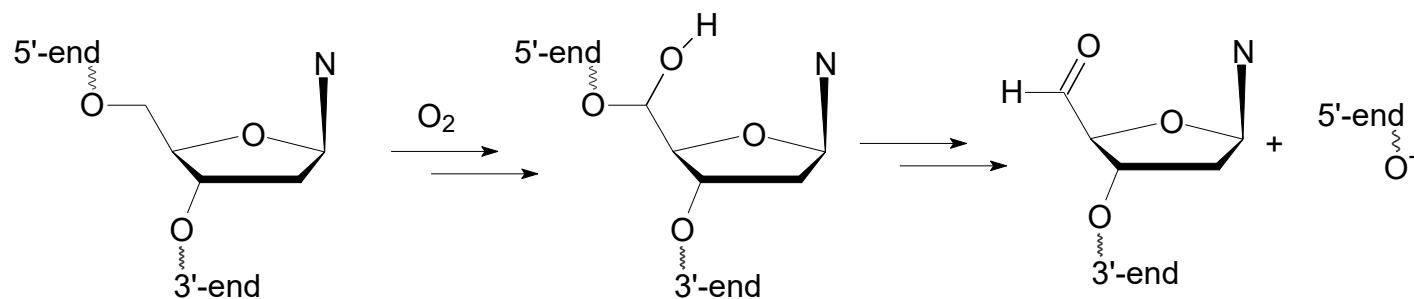
neocarzinostatin



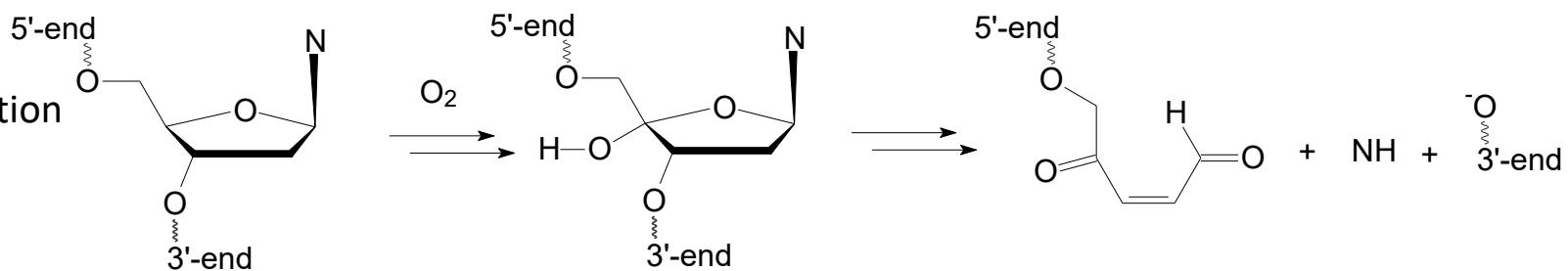


single strand DNA cleavage due to C-5' H abstraction (80%) and C-4' or C-1' abstraction (20%)

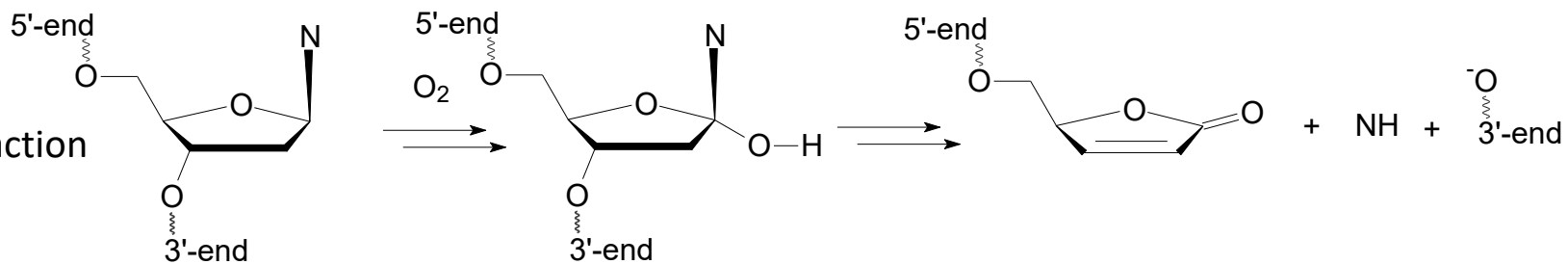
C-5' H abstraction



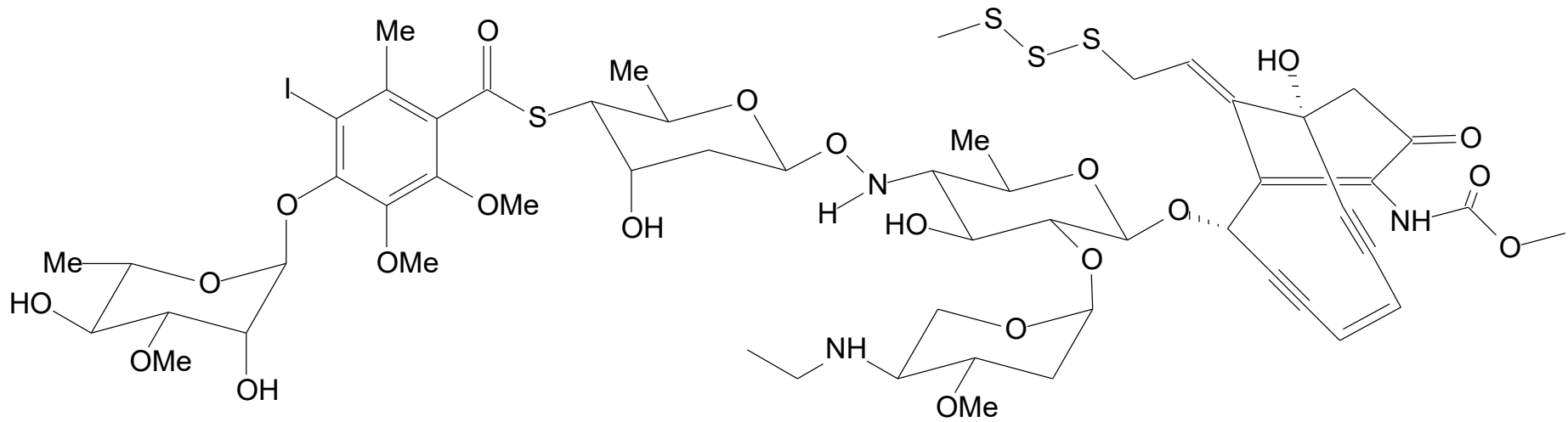
C-4' H abstraction



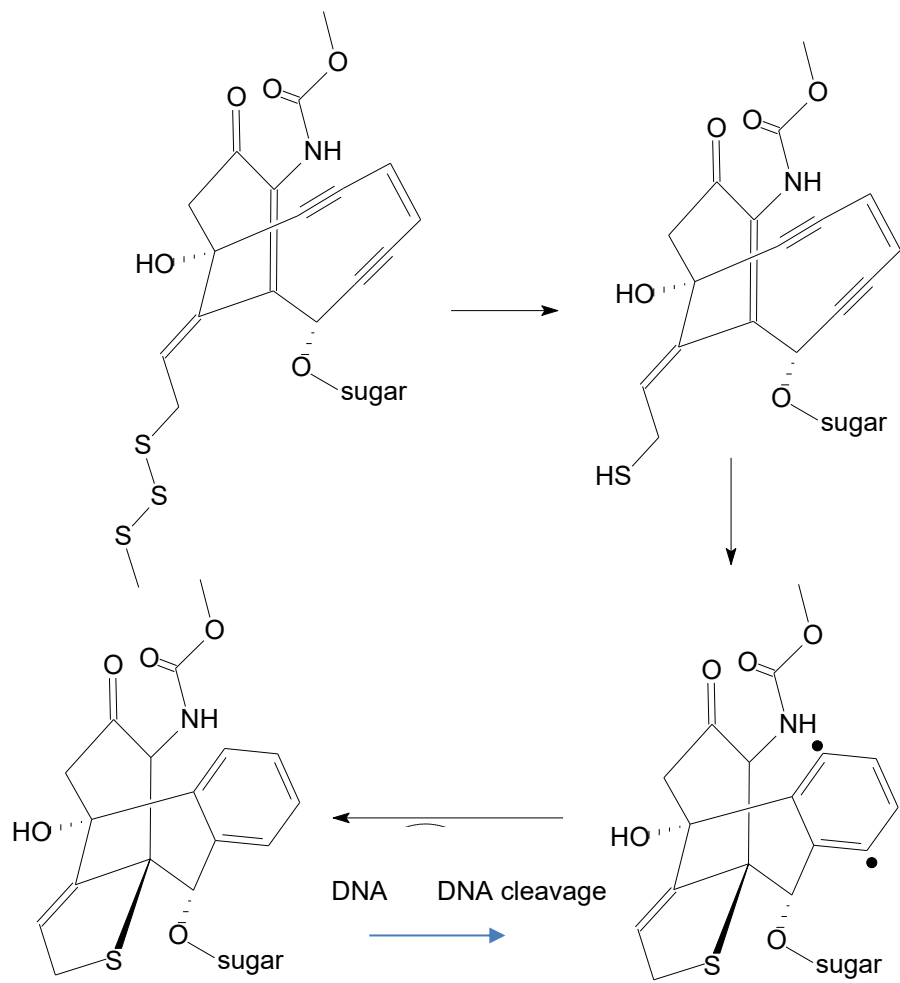
C-1' H abstraction



calicheamicins (γ_1^I)



Specific double strand DNA cleavage at the C-5' of C and the C-4' of the nucleotide 3 bases apart on the complementary strand (towards 3'-side)

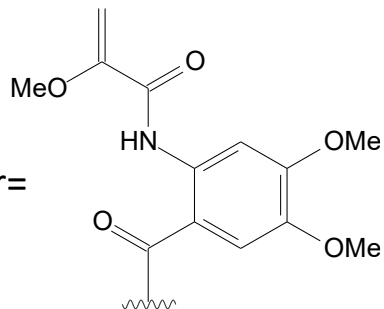


n=3 or 4

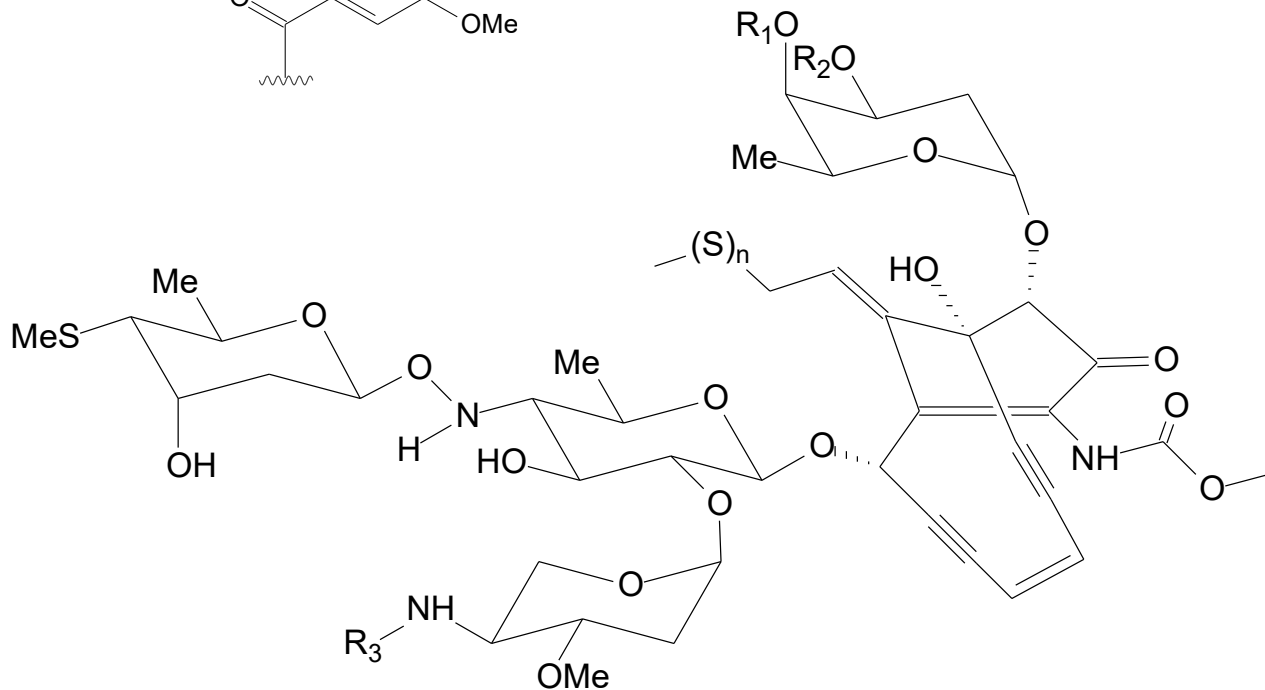
R₁, R₂= H or Ar

R₃= Me, Et, isoPr

Esperamicin A₁. Ar=

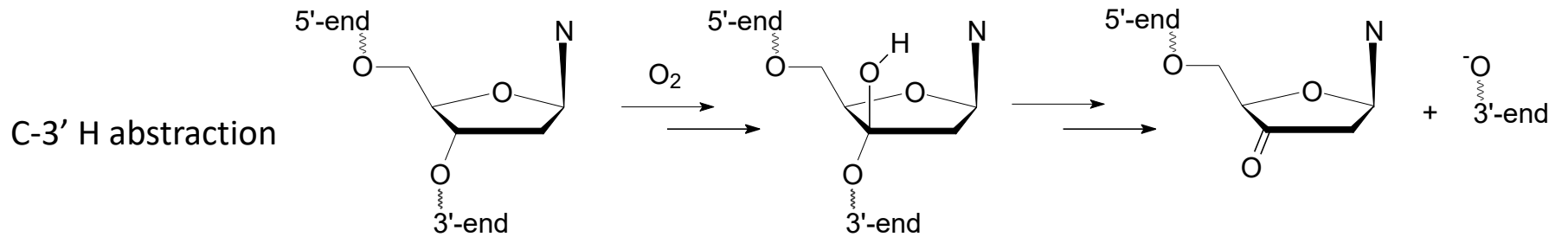
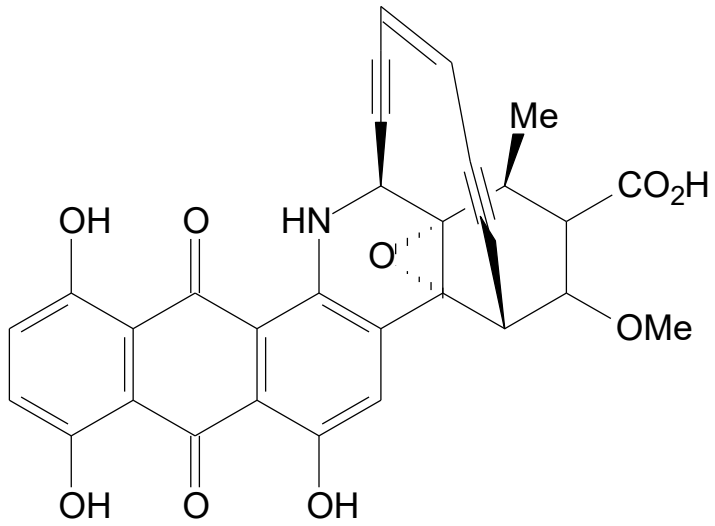


esperamicins

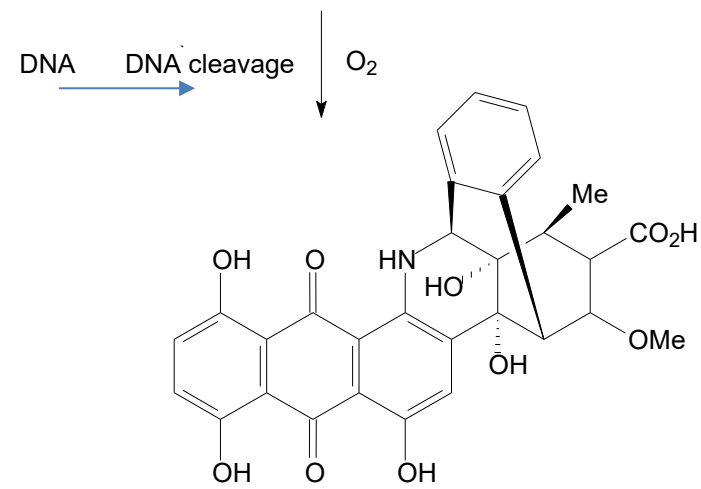
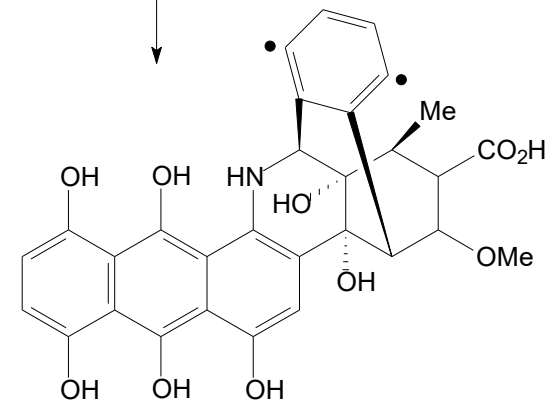
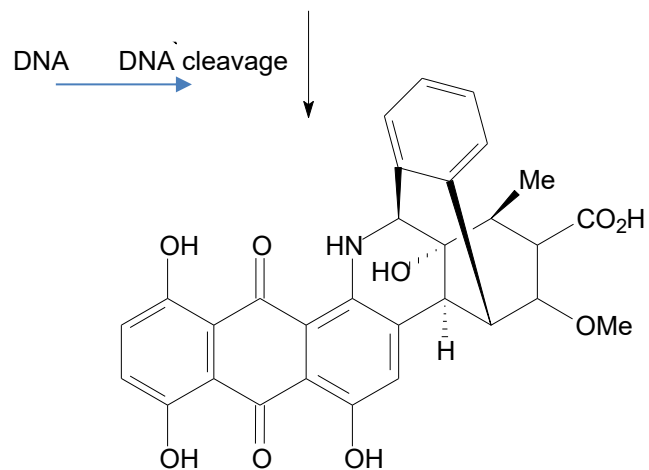
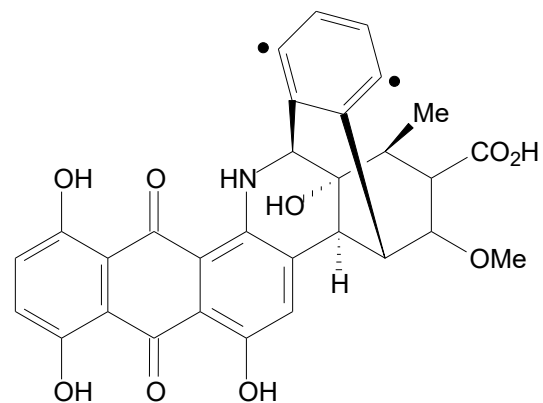
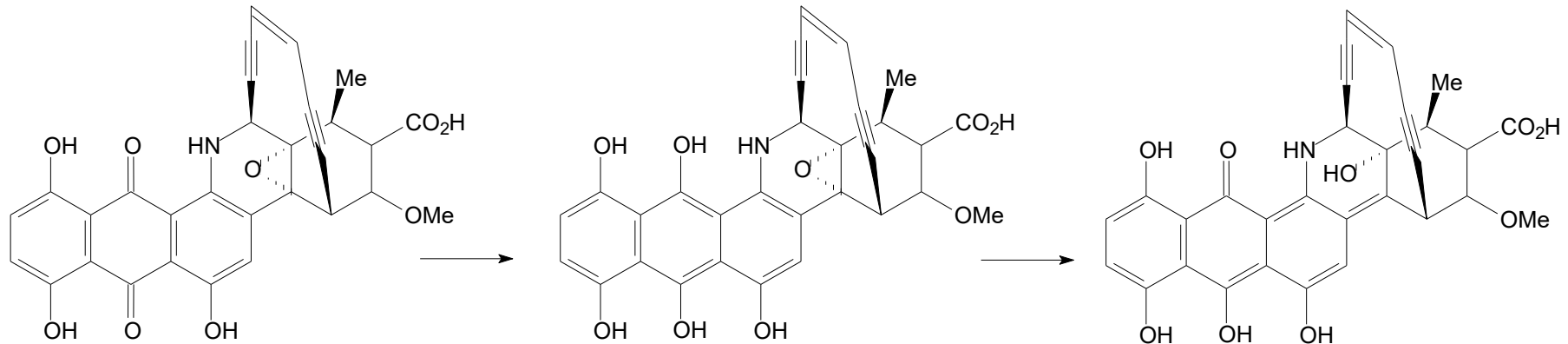


Less seq. selectivity. C-5' and C-4' H abstraction. Esperamicin A₁ effects single strand cuts.

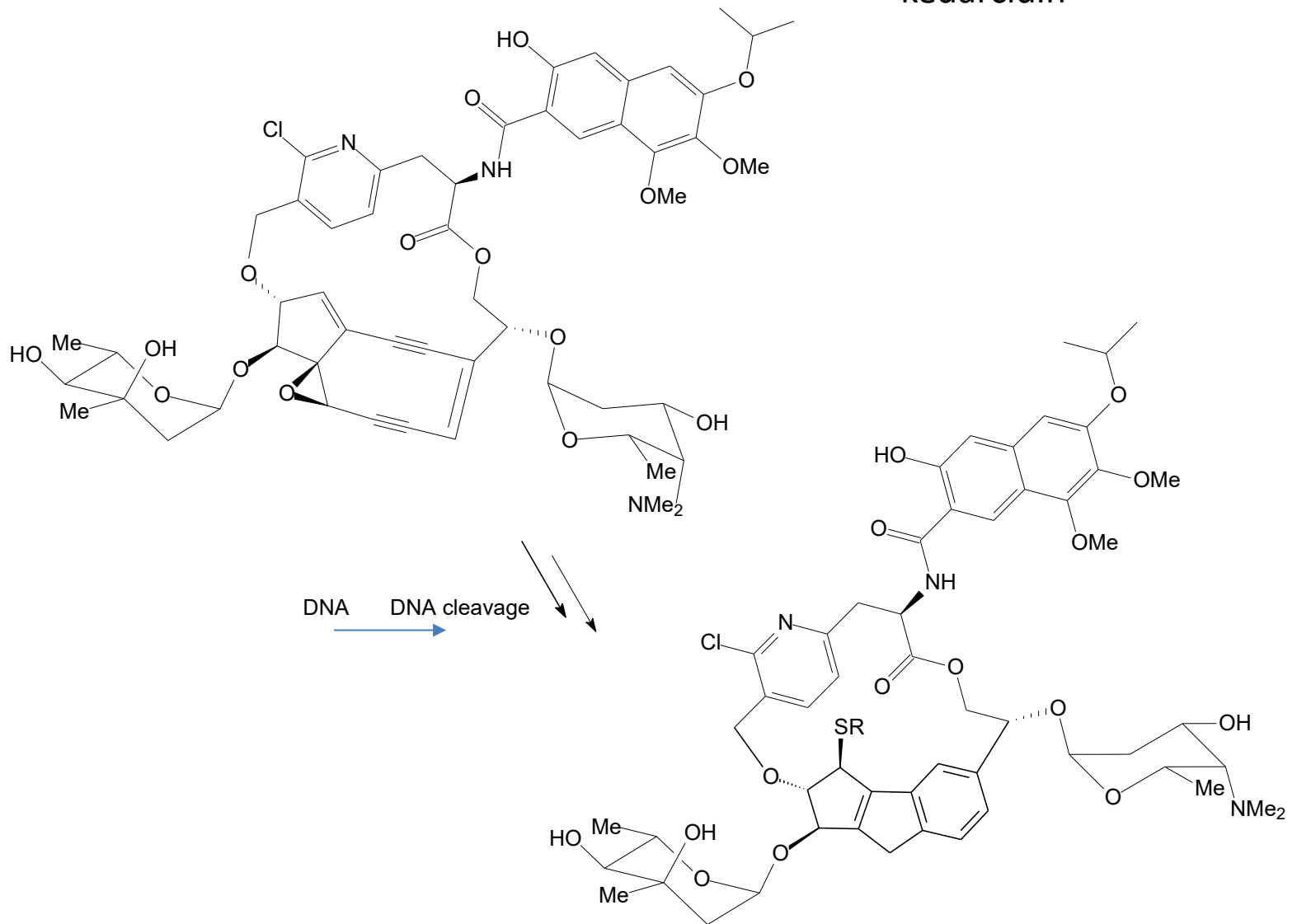
dynemicins



Single & double strands, due to C-3' H or (and) C-5' H abstraction.

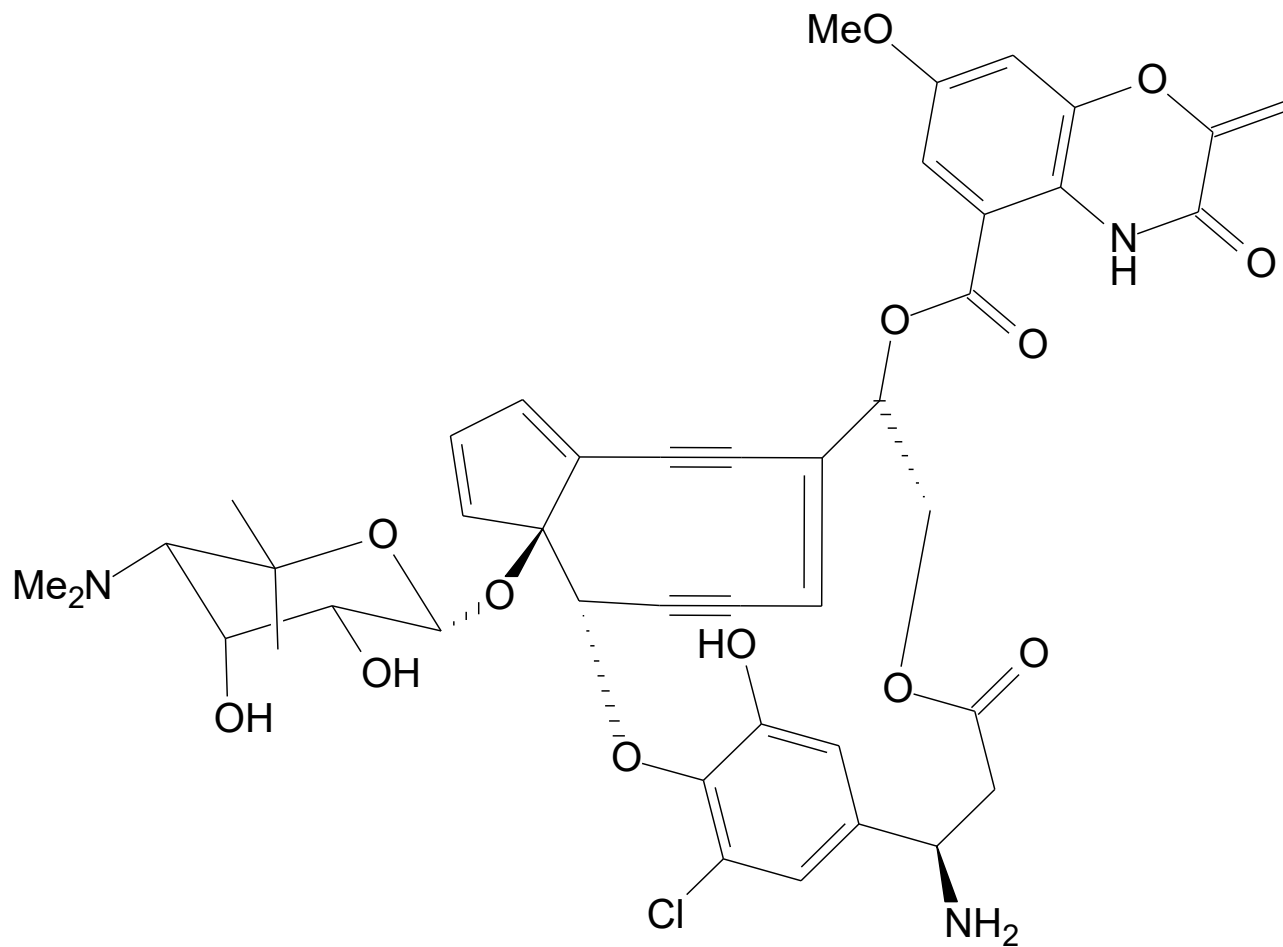


kedarcidin



Specific single strand DNA cleavage at the C-5' of C

C-1027



Specific double strand DNA cleavage due to C-4' H abstraction

maduropeptin

