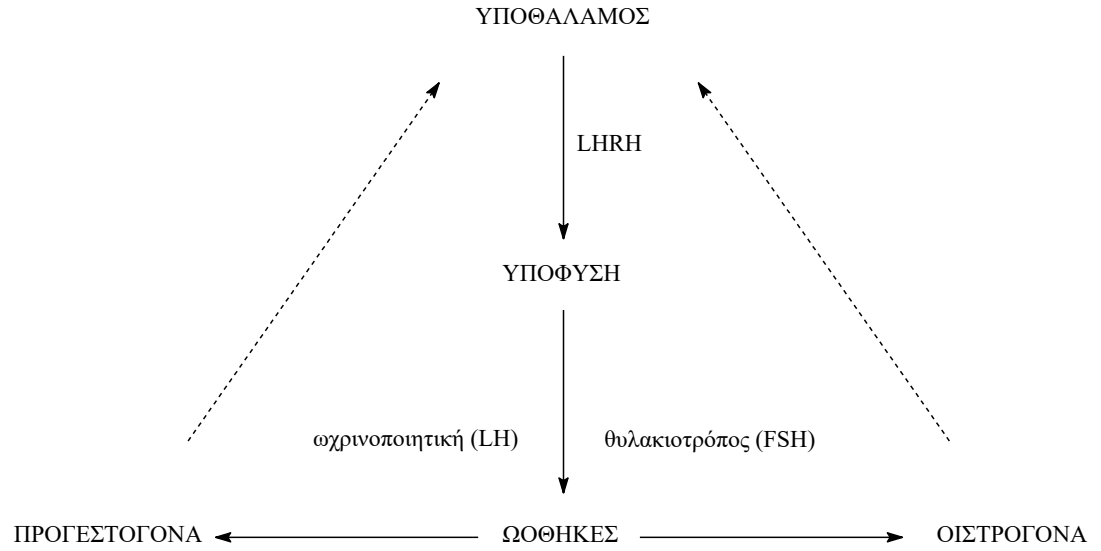
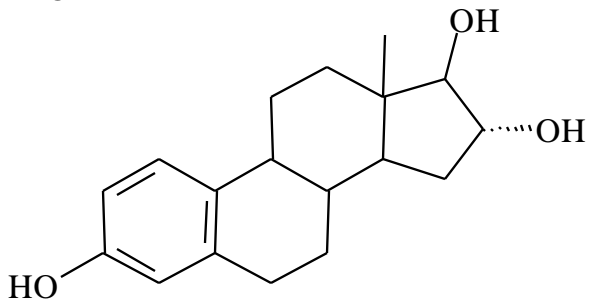
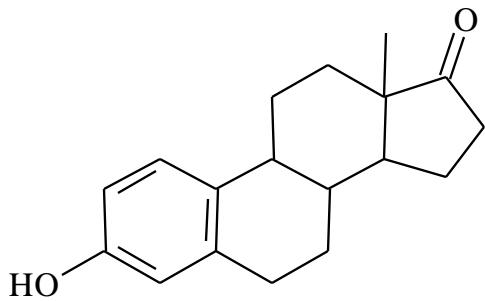
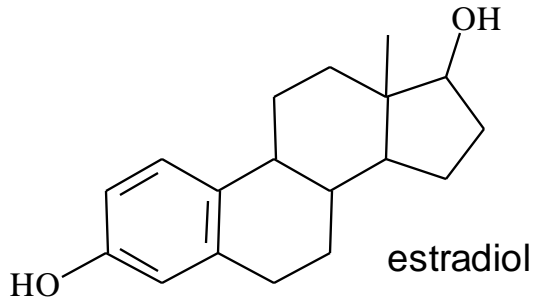
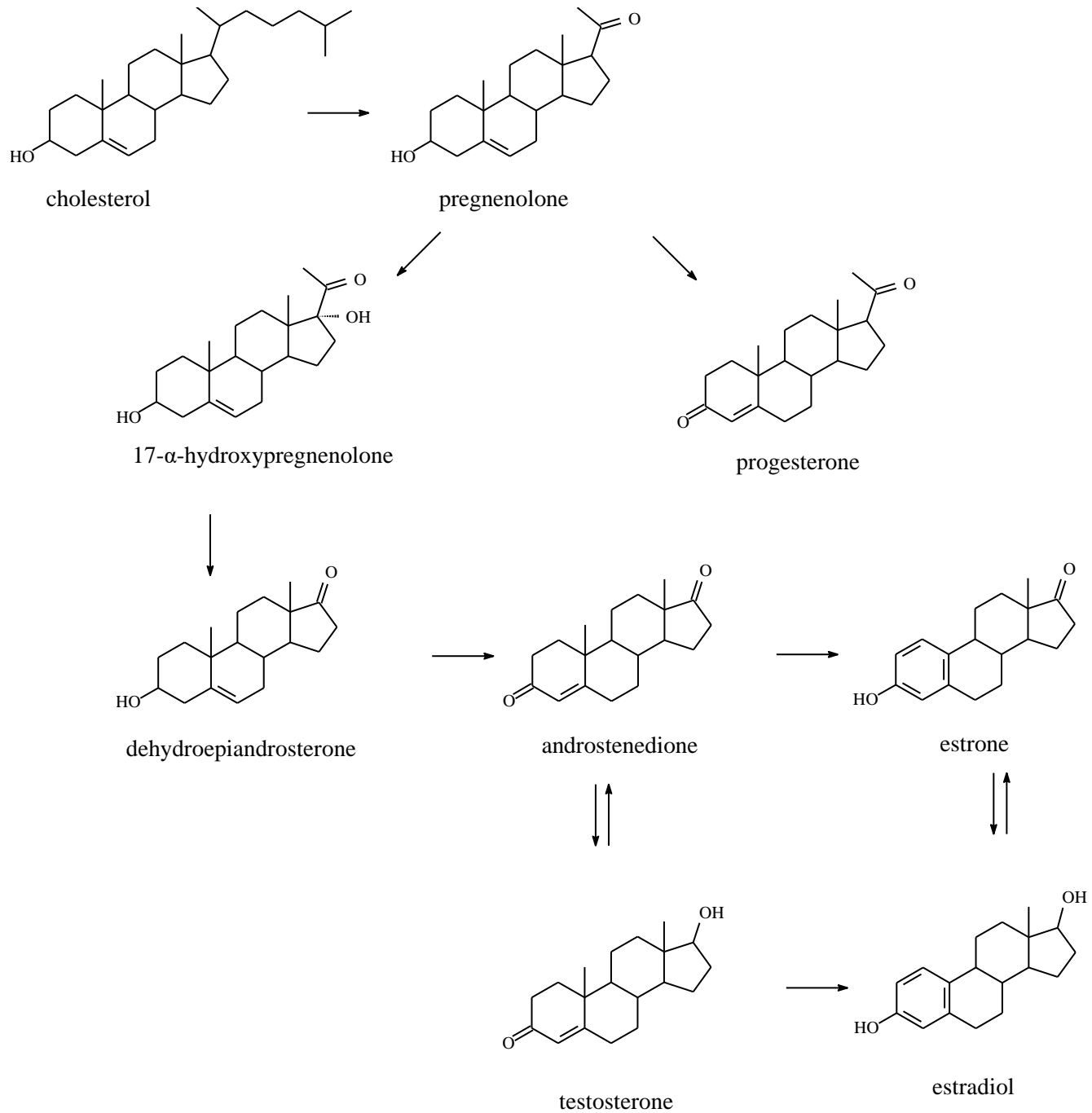
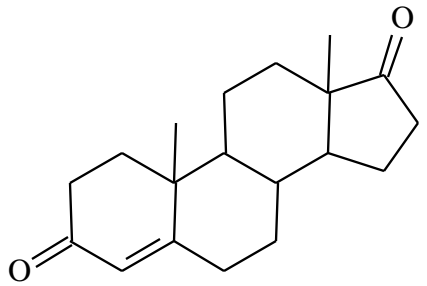


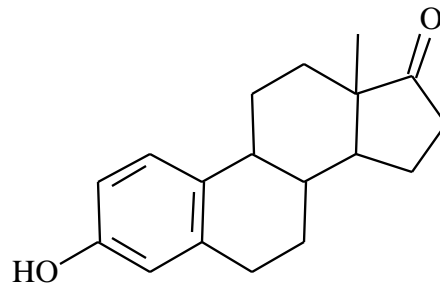
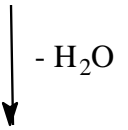
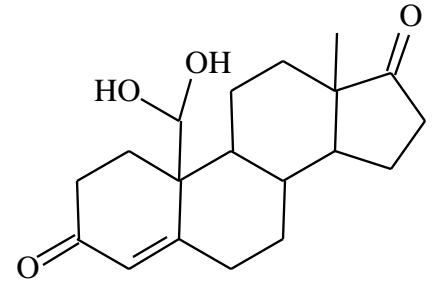
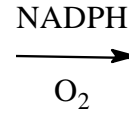
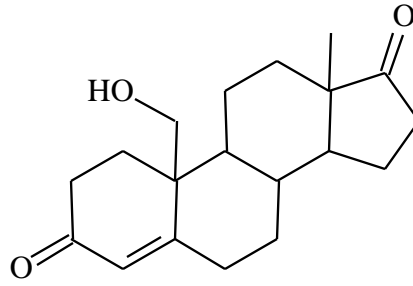
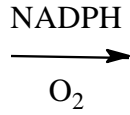
ΟΙΣΤΡΟΓΟΝΑ



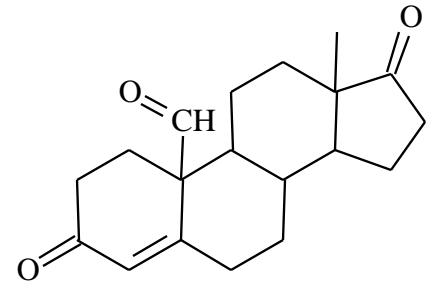
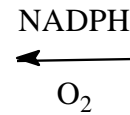


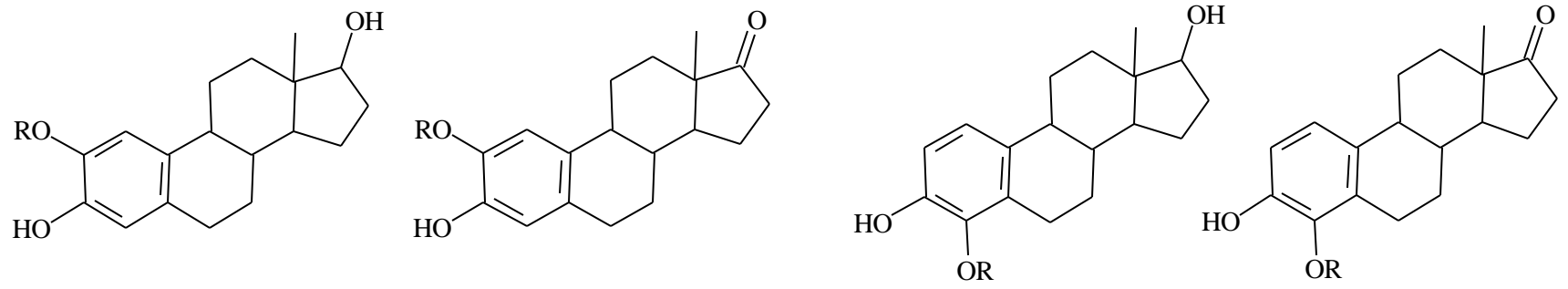
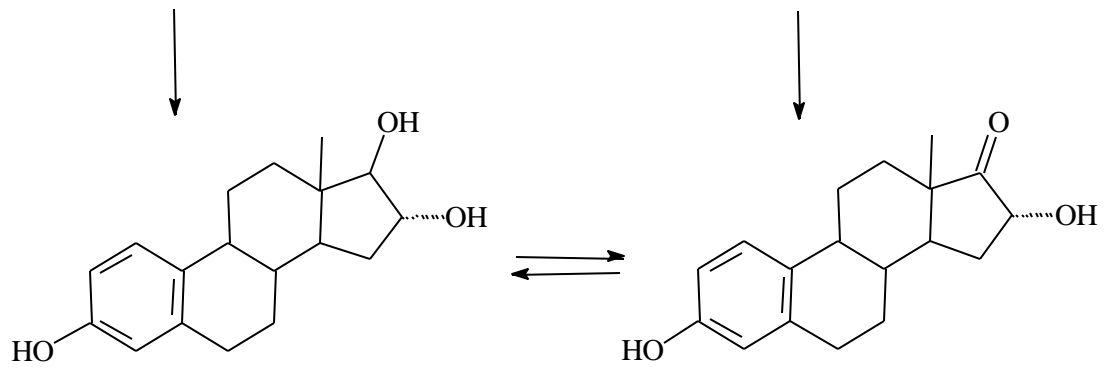
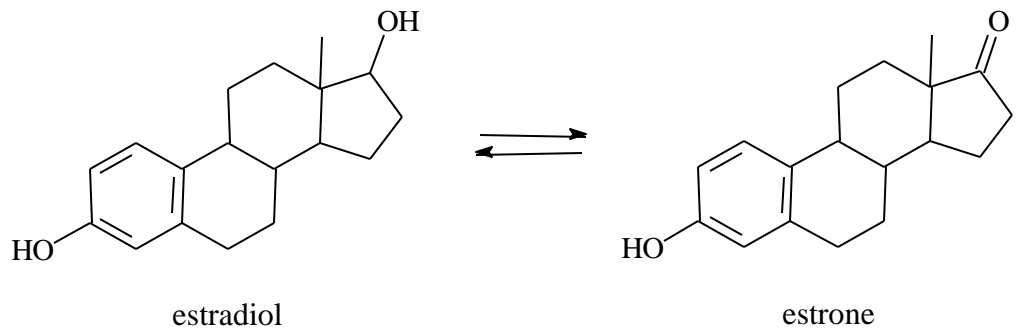


androstendione

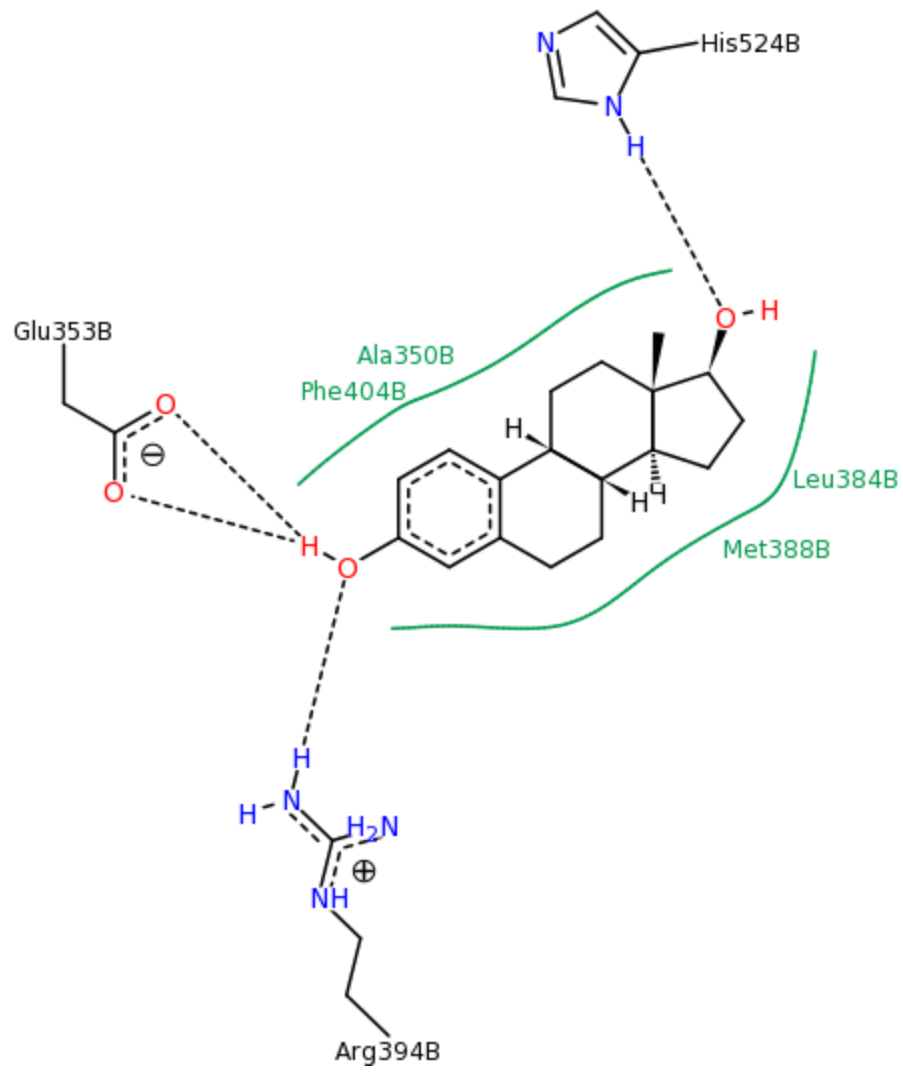


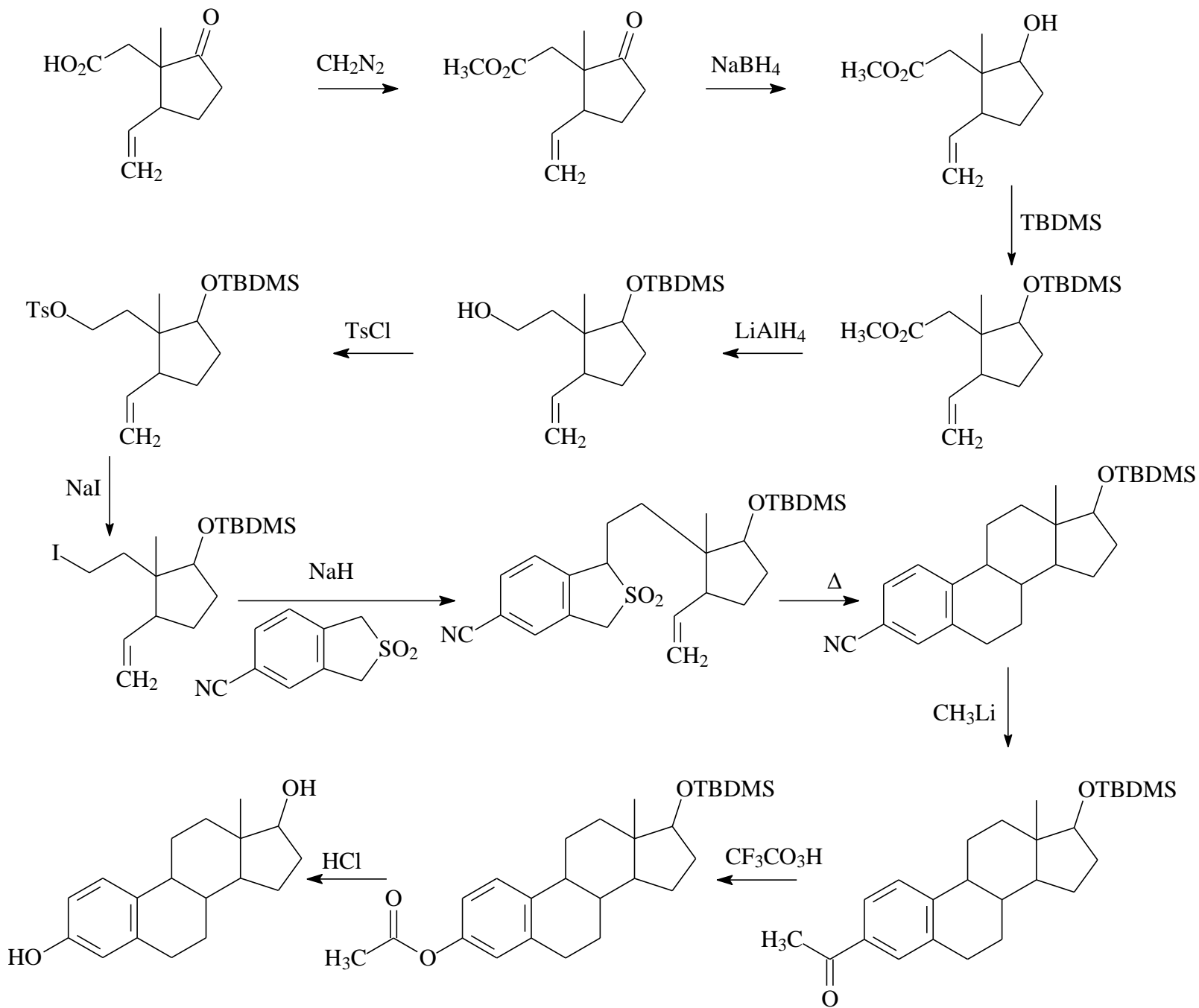
estrone

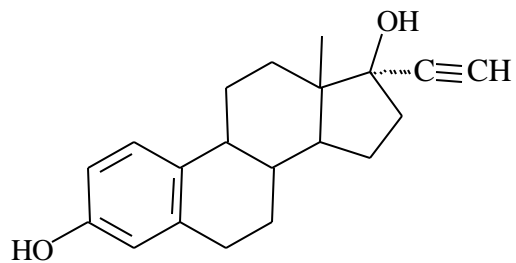




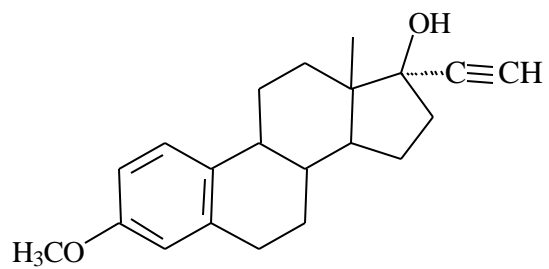
R: H, CH₃



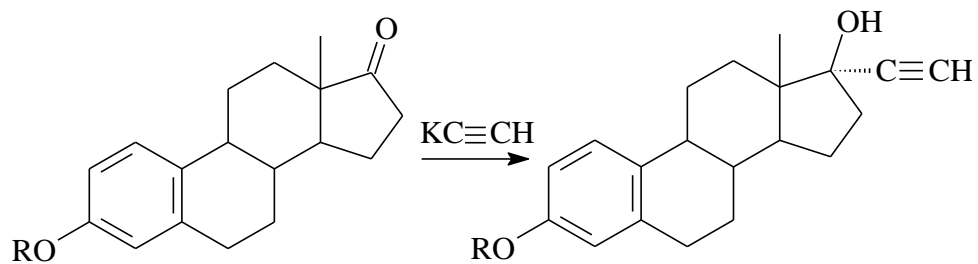




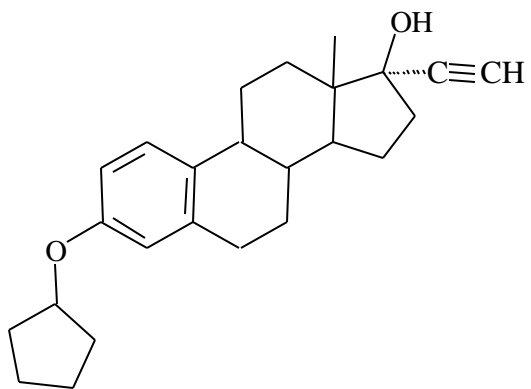
ethinyl estradiol

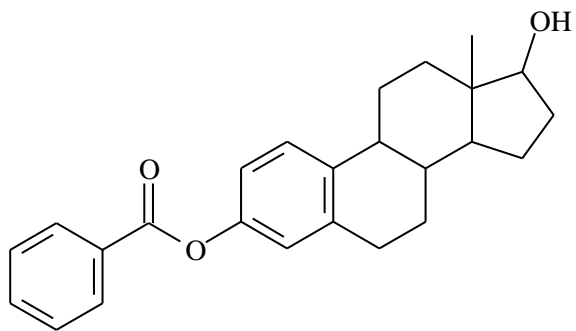


mestranol

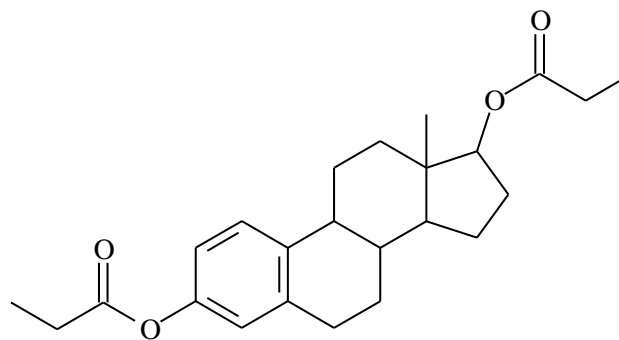


quinnestrol

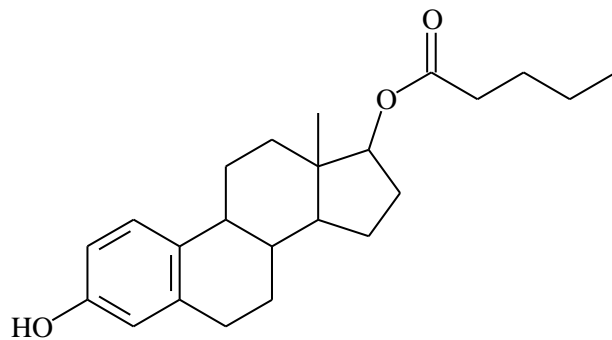




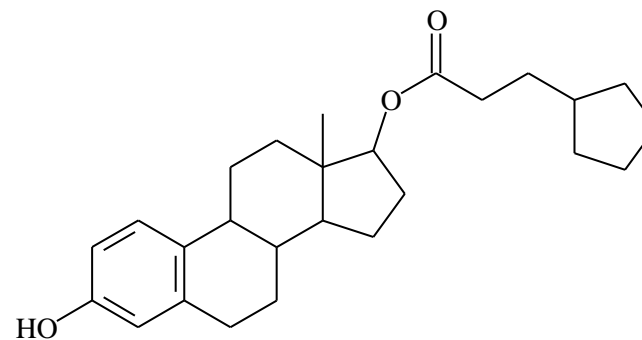
estradiol 3-benzoate



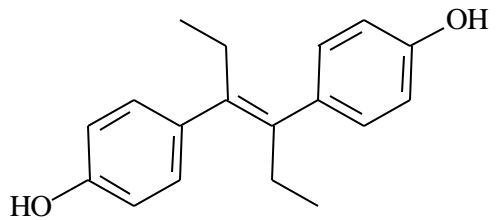
estradiol 3,17-dipropionate



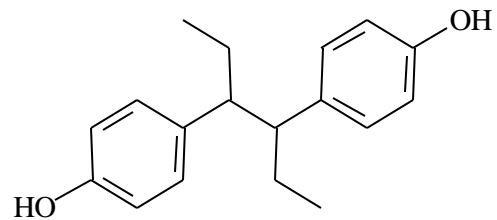
estradiol 17-valerate



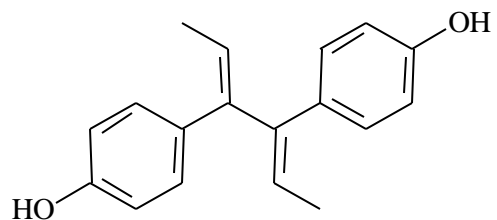
estradiol cypionate



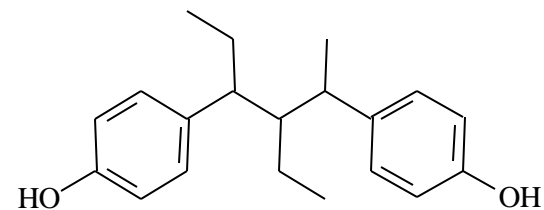
diethylstilbestrol



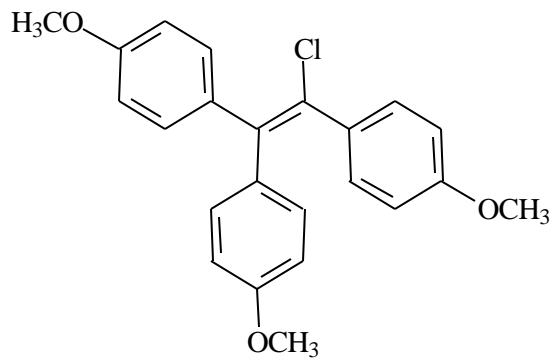
hexestrol



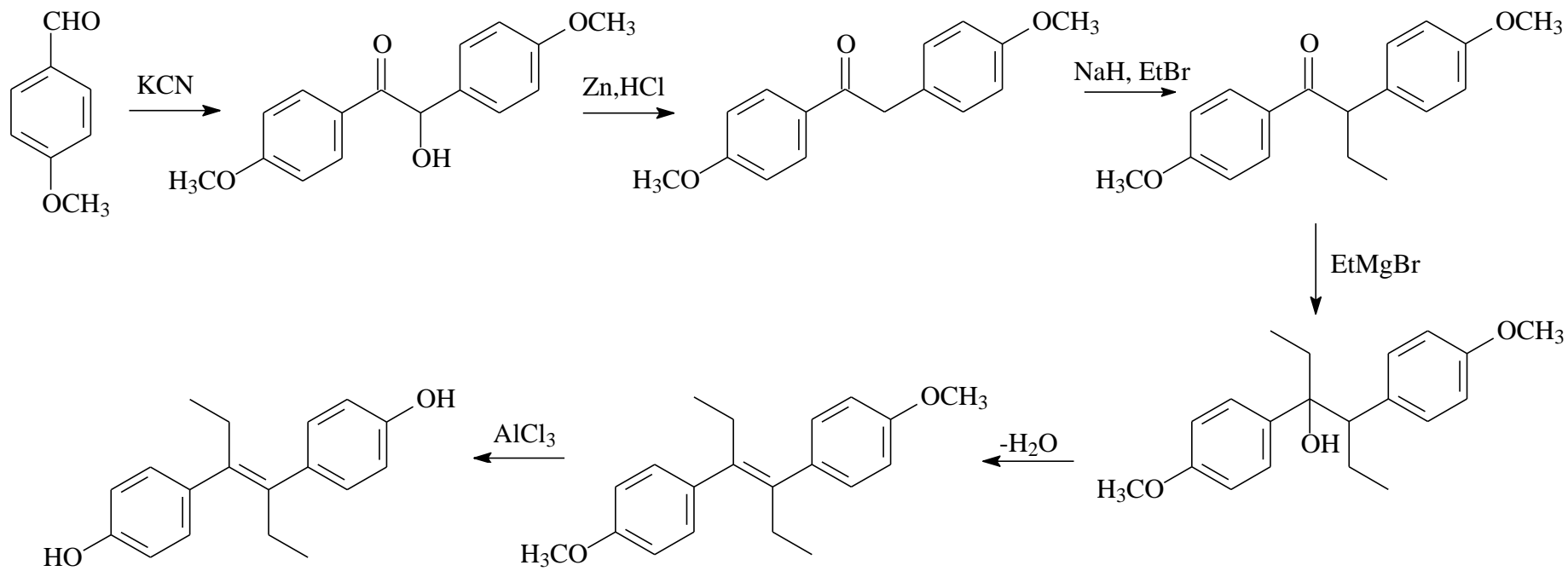
dienestrol

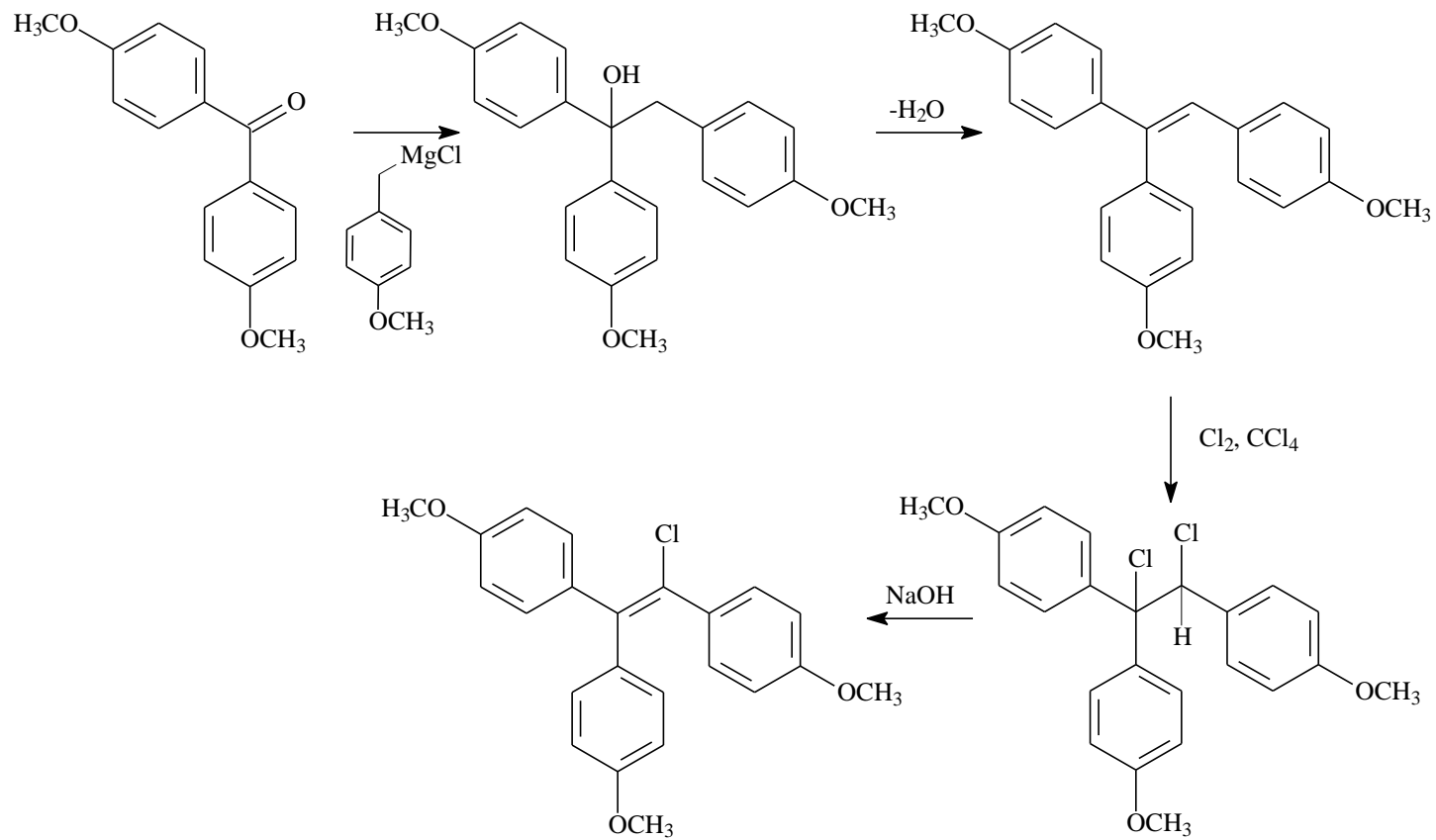


benzestrol

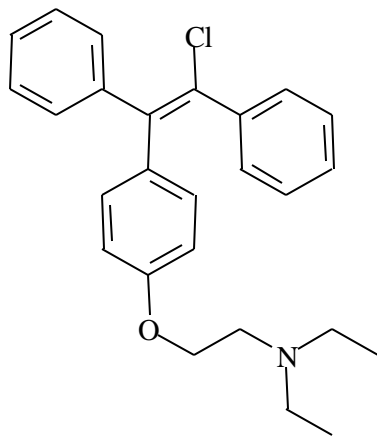


chlorotrianene

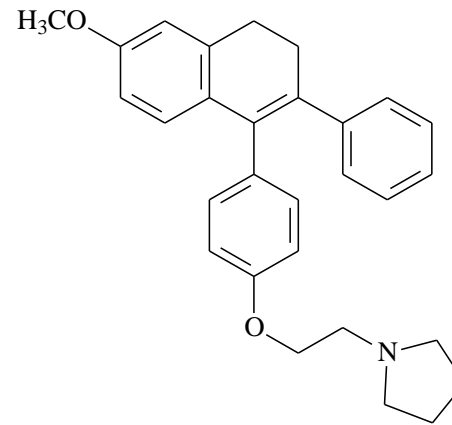




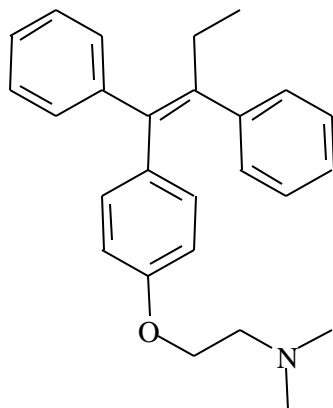
ΜΗ ΣΤΕΡΟΕΙΔΗ ΑΝΤΙΟΙΣΤΡΟΓΟΝΑ



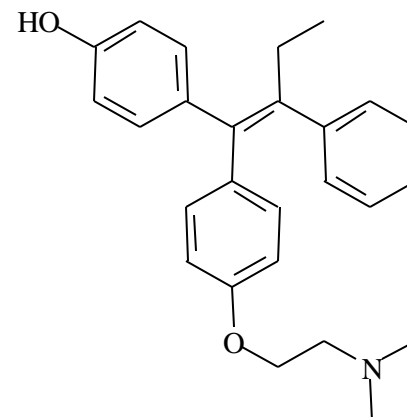
chlomiphene



nafoxidine

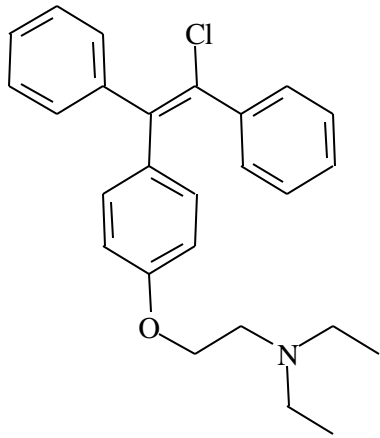


tamoxifene



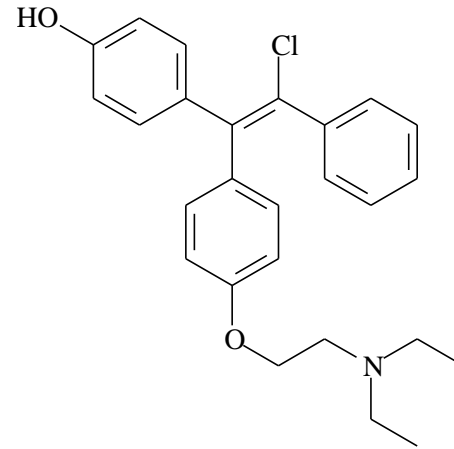
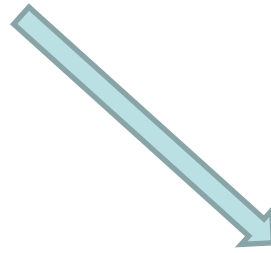
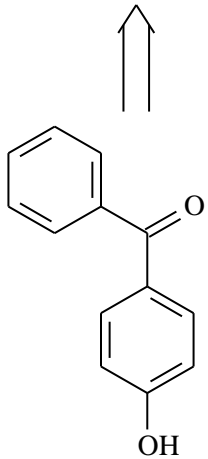
monohydroxytamoxifene

ΜΗ ΣΤΕΡΟΕΙΔΗ ΑΝΤΙΟΙΣΤΡΟΓΟΝΑ

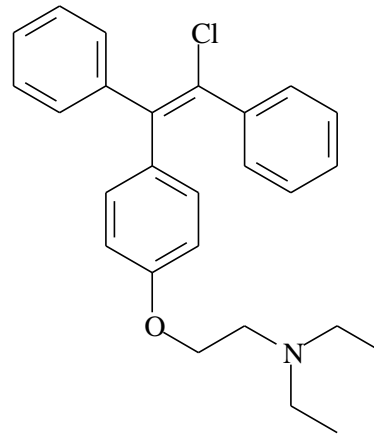


chlomiphene

Συνδέεται εκλεκτικά στους οιστρογονικούς υποδοχείς του υποθαλάμου

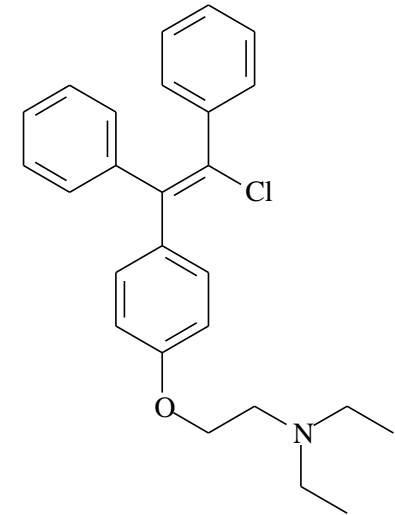


Μεταβολική οξείδωση



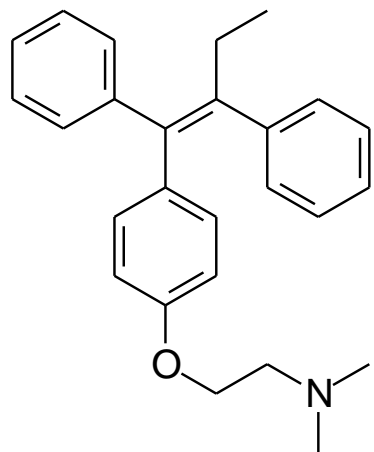
Enclomiphene

Ανπιοιστογόνος δράση

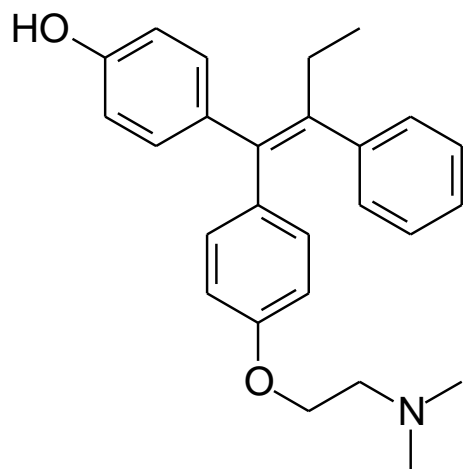
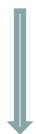


Zuclomiphene

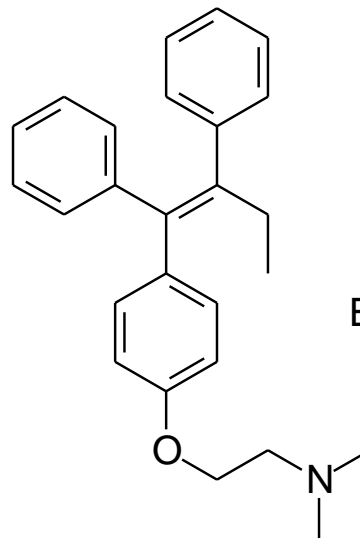
Οιστογόνος δράση



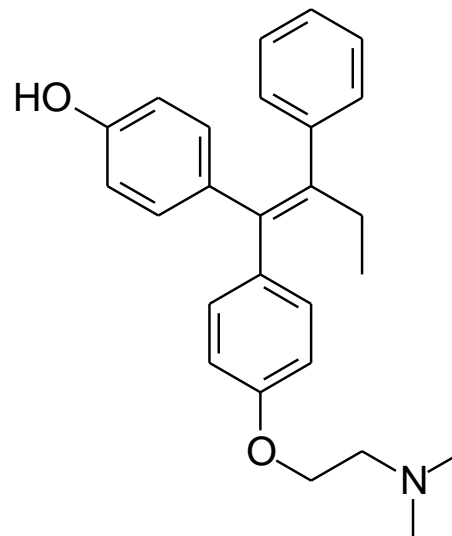
Z-tamoxifene



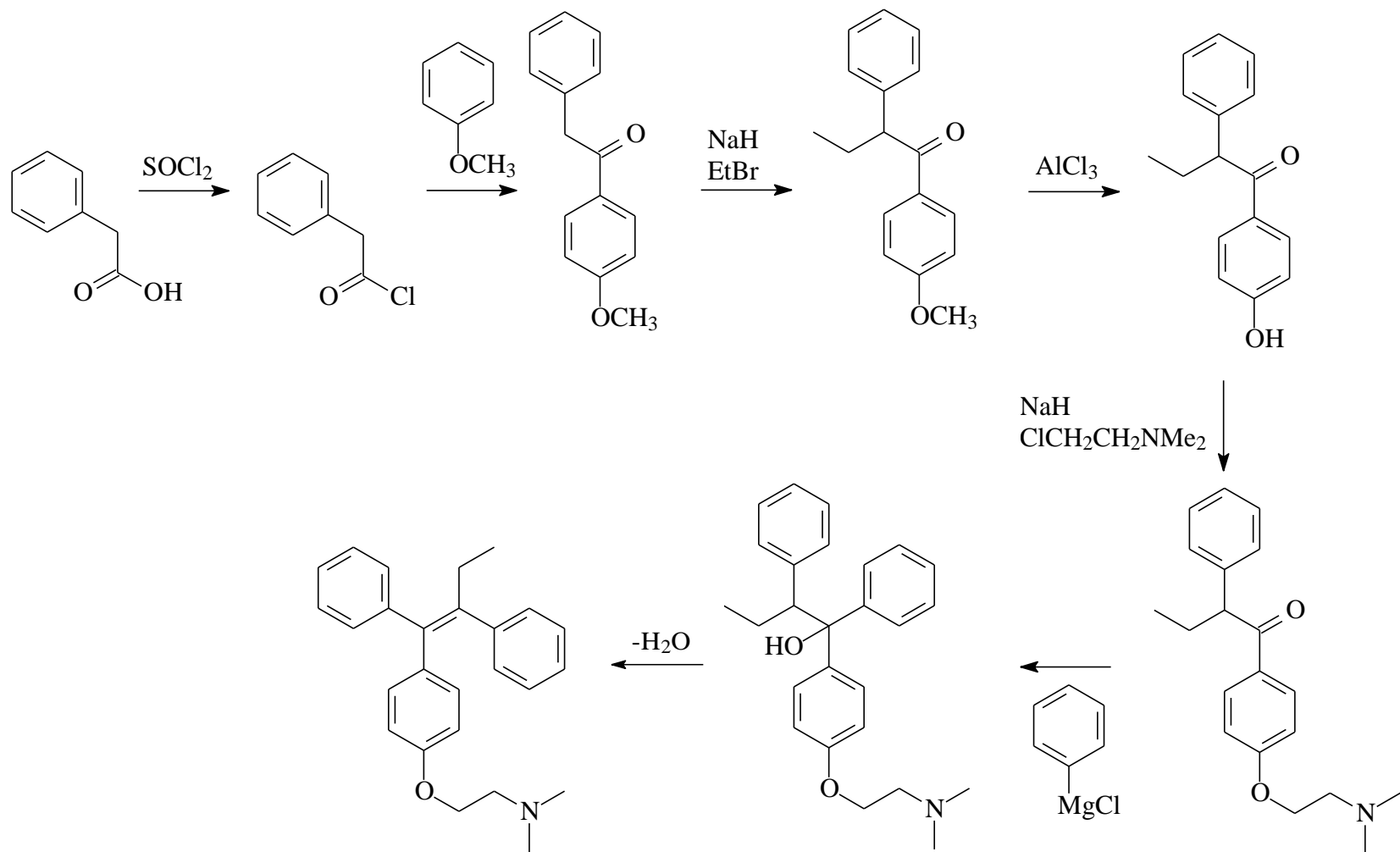
Αντιοιστρογόνος δράση



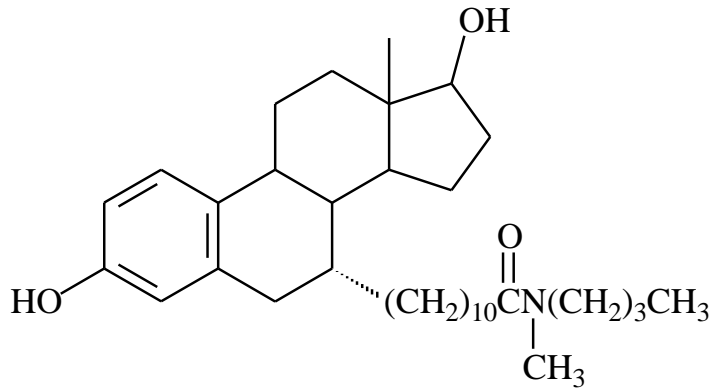
E-tamoxifene



Οιστρογόνος δράση

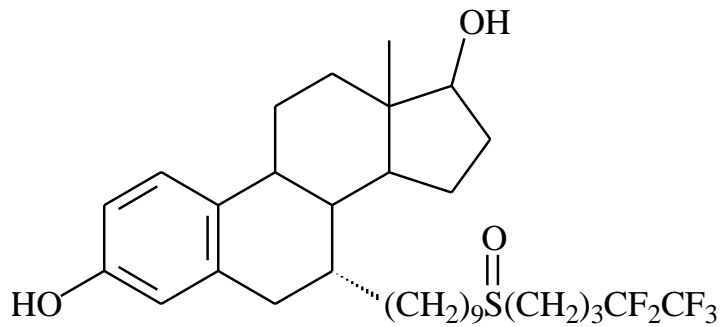


ΣΤΕΡΟΕΙΔΗ ΑΝΤΙΟΙΣΤΡΟΓΟΝΑ



ICI 164,384

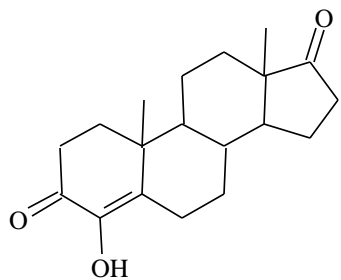
Στερούνται οιστρογόνου δράσης



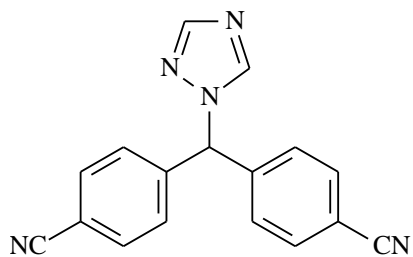
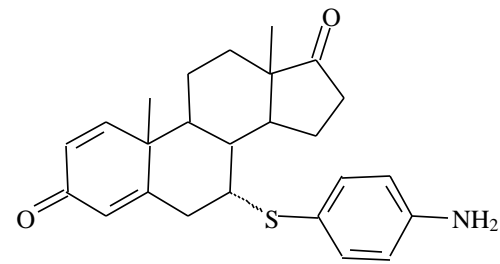
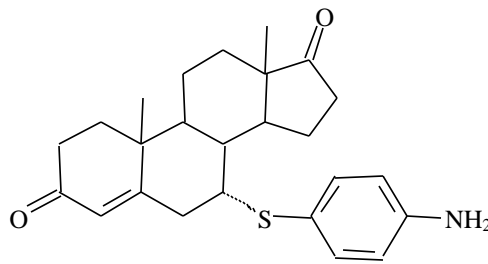
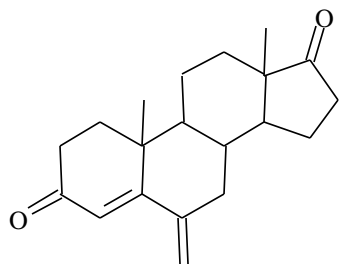
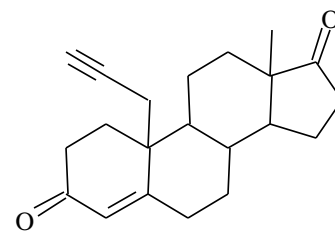
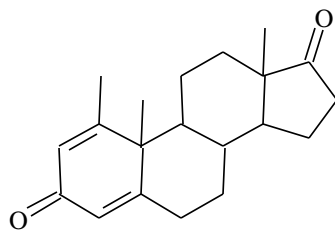
fulvestrant

Έναντι ανθεκτικού στο tamoxifen μεταστατικού καρκίνου του μαστού

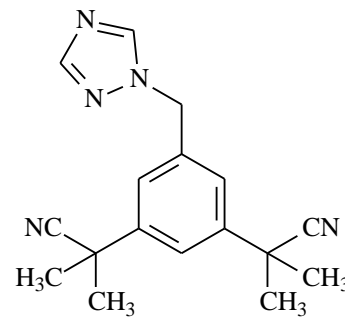
ΑΝΑΣΤΟΛΕΙΣ ΤΗΣ ΑΡΩΜΑΤΑΣΗΣ



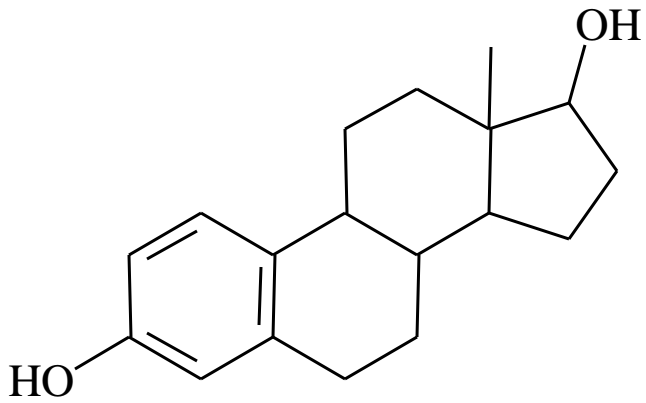
4-hydroxyandrostenedione



letrozole

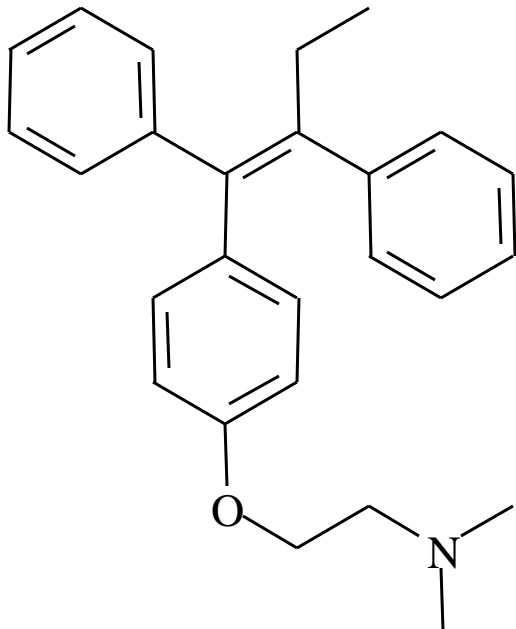


anastrozole



estradiol

Δρά (αγωνιστικά) στους οιστρογονικούς υποδοχείς:
Μήτρας, μαστού, οστών, καρδιαγγειακού συστήματος
ΚΝΣ

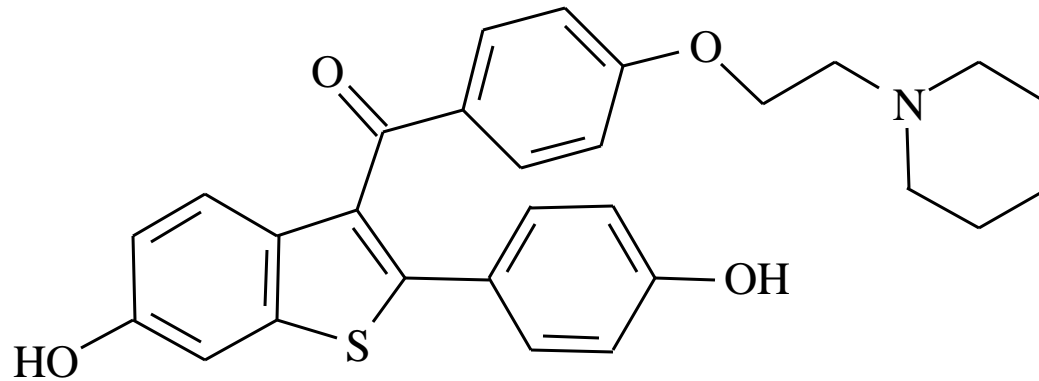


tamoxifene

Δρά ως ανταγωνιστής στους οιστρογονικούς υποδοχείς
του μαστού και
ως αγωνιστής στους αντίστοιχους υποδοχείς οστών και
αγγείων,

Όμως

Δρά ως αγωνιστής στους οιστρογονικούς υποδοχείς της
μήτρας



raloxifene

Δρά ως **ανταγωνιστής** στους οιστρογονικούς υποδοχείς του μαστού και ως **αγωνιστής** στους αντίστοιχους υποδοχείς οστών και αγγείων (μειώνει τα επίπεδα LDL χοληστερόλης),

Και επιπλέον

Δεν δρά ως αγωνιστής στους οιστρογονικούς υποδοχείς της μήτρας,

