



# Ancient Greek art: an overview.

Dimitris Plantzos  
dkplantzos@arch.uoa.gr

# Course structure

1. *Techne*: what is 'Greek' about Greek art? (29/2)

## **Section 1: Early Greece, ca. 1200-480 BCE**

1. *Sema*: commemorating the dead in Early Greece. (7/3)
2. *Anathema*: gifts to the gods in Greek sanctuaries. (14/3)
3. *Agalma*: pleasing immortals and mortals alike. (21/3)
4. *Kerameus*: the art of Greek pottery. (28/3)

***No class April 4, "de-brief" class April 11***

## **Section 2: Classical Greece, ca. 480-336 BCE**

1. *Mimesis*: nature as aesthetic ideal. (18/4)
2. *Hieron*: visiting a Greek sanctuary. (25/4)
3. *Skiagraphia*: painting with shadows. (16/5)

## **Section 2: Art in the Hellenistic World, ca. 336-30 BCE**

1. *Pathos*: sculpture in the Hellenistic period. (23/5)
2. *Eikon*: immortalising the mortals. (30/5)

# Course structure

**No class April 4, “de-brief” class April 11**

## Section 2: Classical Greece, ca. 480-336 BCE

1. *Mimesis*: nature as aesthetic ideal. (18/4)
2. *Hieron*: visiting a Greek sanctuary. (25/4)
3. *Skiagraphia*: painting with shadows. (16/5)

## Section 2: Art in the Hellenistic World, ca. 336-30 BCE

1. *Pathos*: sculpture in the Hellenistic period. (23/5)
2. *Eikon*: immortalising the mortals. (30/5)

# OLYMPIA

- <https://www.latsis-foundation.org/eng/e-library>

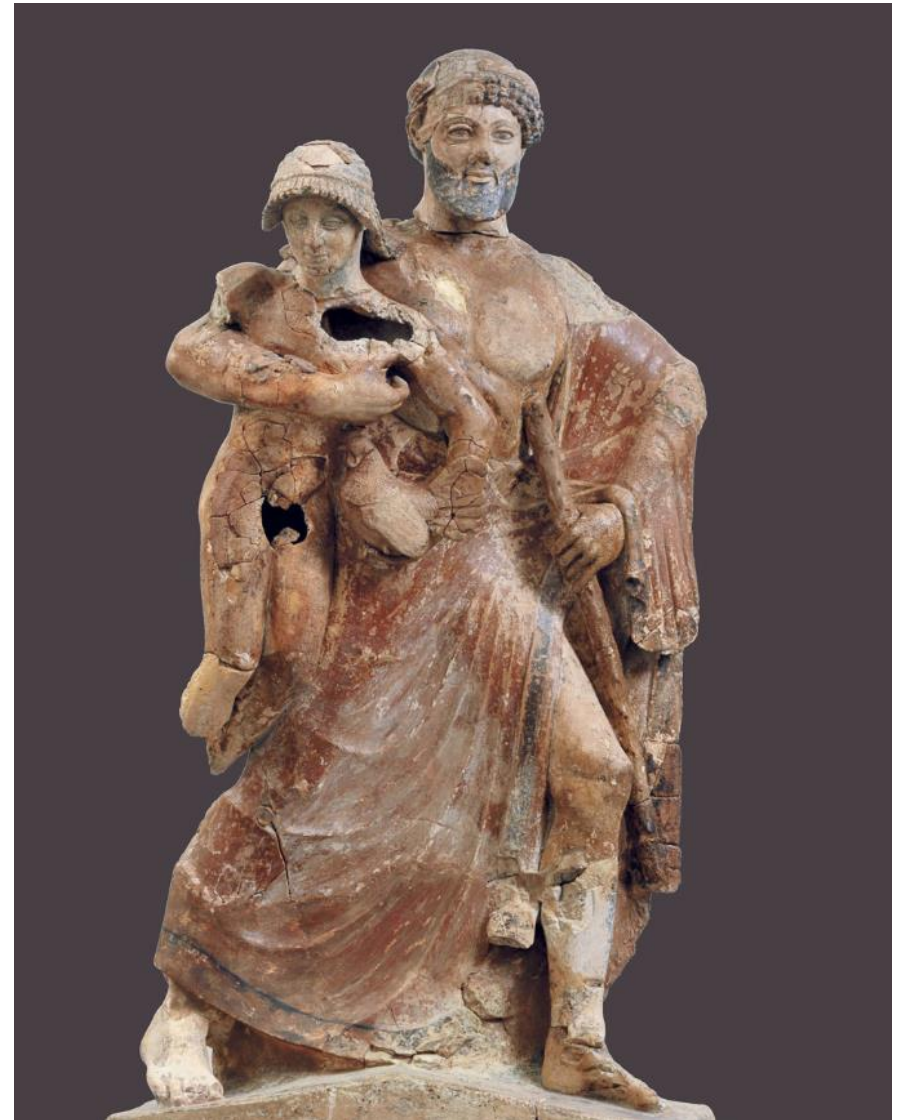
GEORGIA E. HATZI



THE  
ARCHAEOLOGICAL  
MUSEUM OF  
OLYMPIA



John S. Latsis  
Public Benefit Foundation



# The Sanctuary of Olympia

- Late Neolithic Period (4500-3100 BCE)
- Early Helladic Buildings (c. 2250 BCE)
- Early Sanctuary: 9<sup>th</sup> c. BCE
- Olympic Games: 8<sup>th</sup> c. BCE (“776 BCE”)
- Temple of Hera (600 BCE)
- Temple of Zeus (470-450 BCE)
- 393 CE: the last Olympic Games



# 1. The Philippeion





## 2. The Temple of Hera





# 3. The Temple of Zeus





# 4. The Stadium

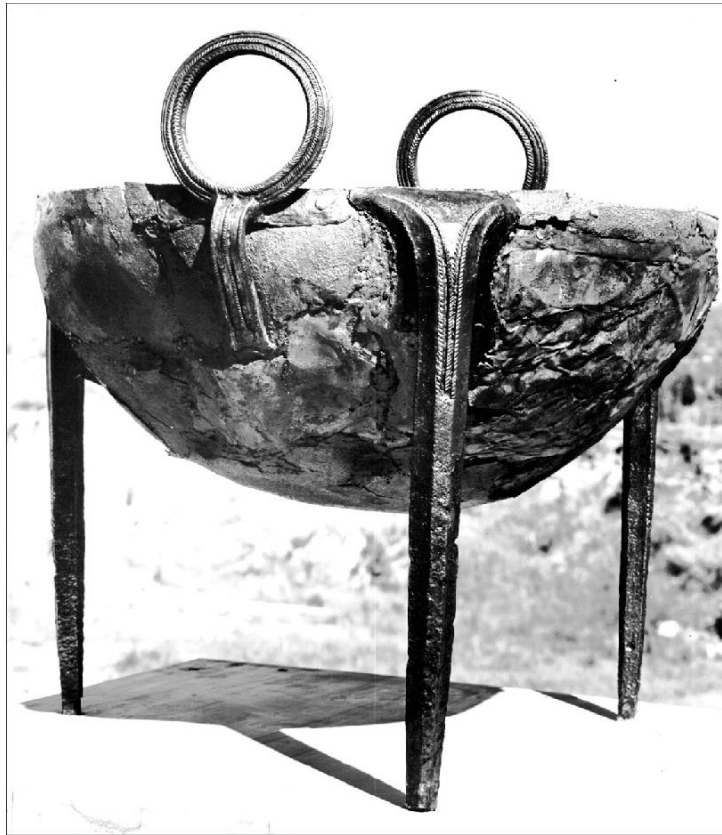




# 5. The Treasuries



# 6. The Cauldrons

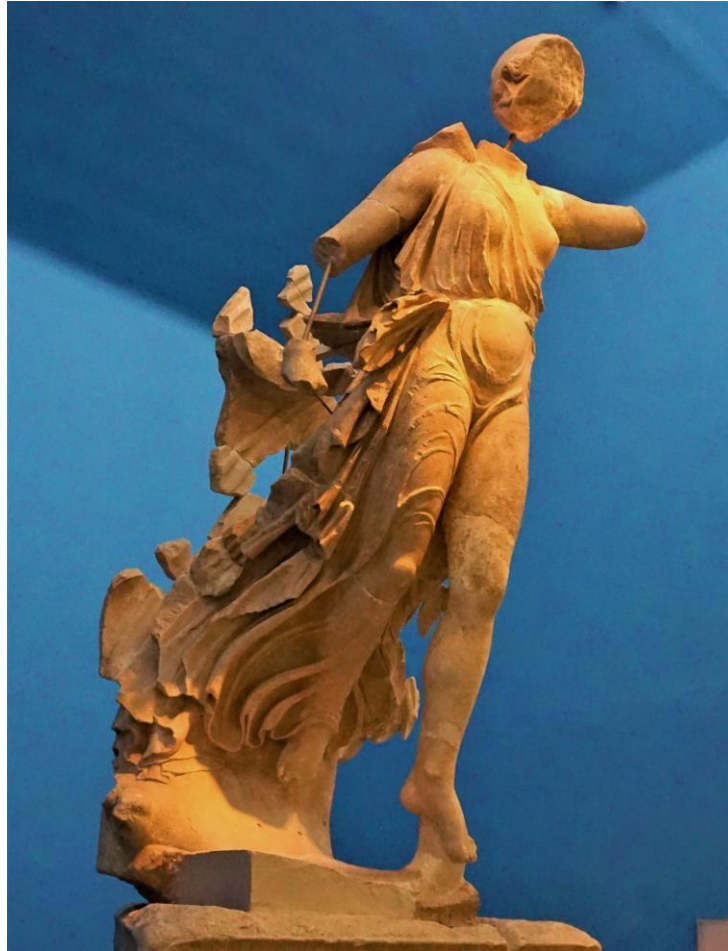




# 7. The Helmets



## 8. The Nike of Paeonius



# 9. The Hermes of Olympia





# DELPHI

- [https://www.latsis-foundation.org/content/elib/book\\_13/delphoen.pdf](https://www.latsis-foundation.org/content/elib/book_13/delphoen.pdf)

ROSINA COLONIA

## THE ARCHAEOLOGICAL MUSEUM OF DELPHI



John S. Latsis  
Public Benefit Foundation



# The Sanctuary of Delphi

- Late Bronze Age (Mycenaean) settlement, 13<sup>th</sup>-12<sup>th</sup> c. BCE
- Earliest documented cult activities, 10<sup>th</sup> c. BCE
- Monumental dedications and Treasuries, 6<sup>th</sup> c. BCE
- The first marble temple, 6<sup>th</sup> c. BCE
- The late-classical temple, 4<sup>th</sup> c. BCE
- The Tholos, 4<sup>th</sup> c. BCE
- 4<sup>th</sup> c. CE: Oracle banned, Delphi abandoned

# 1. The Treasury of the Siphnians





## 2. The Treasury of the Sicyonians





# 3. The Treasury of the Athenians





## 4. The Stoa of the Athenians





# 5. The Sphinx of the Naxians



# 6. The Temple of Apollo





# 7. The Theatre





# 8. The Daochus Monument



# 9. The Tholos

