

Εργασία με το Ministeps

WINSTEPS & Facets Rasch Software

[Buy Winsteps or Facets now.](#)

Widely used versatile Rasch Analysis and Rasch Measurement Software

Probabilistic Measurement Models

[Dichotomous Rasch Model](#) (DRM) - 60,000 items by 10,000,000 persons

[Rating Scale Model](#) (RSM) & [Extended Logistic Model](#) - Andrich - up to 255 rating-scale categories

[Partial Credit Model](#) (PCM) - Masters - up to 255 categories per item

[Grouped Rating Scale Model](#) (GRSM)

[Many-Facet Rasch Measurement](#) - Linacre

[IRT Item Response Theory One Parameter Logistic Model](#) 1PL 1-PL - Lord & Birnbaum

[Linear Logistic Test Model](#) (LLTM), [Paired-Comparison](#) (BTL) Model

Psychometric and Educational test development

[Polytomous](#) - Polychotomous - Analysis - Andersen; [Sequential Rasch Models](#) - Glas etc.

[Rasch Measurement](#) & Fit Analysis - Wright;

[Item bias, DIF and DPF Analysis](#), [Summary Statistics](#), [Wright Maps](#) and more ...



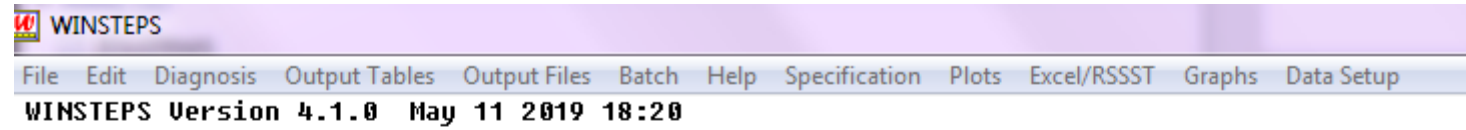
WINSTEPS® Rasch Analysis and Rasch Measurement software for persons & items. Multiple-Choice (MCQ), Rating Scales (RSM), Partial Credit (PCM), with upto 255 categories per scale. Windows-native, backward compatible with BIGSTEPS. Data size: 0,000 items by 10,000,000 persons. Download **free** [MINISTEP](#) evaluation/student/demo version. Buy from our software sales agents, [SWREG](#).

Facets Many-facet Rasch measurement (MFRM) for persons, items, judges, tasks, etc.; Linear Logistic Test Model (LLTM); Bradley-Terry-Luce Paired-Comparison Model (BTL). Download **free** [Minifac](#) evaluation/student/demo version. Buy from our software sales agents, [SWREG](#).

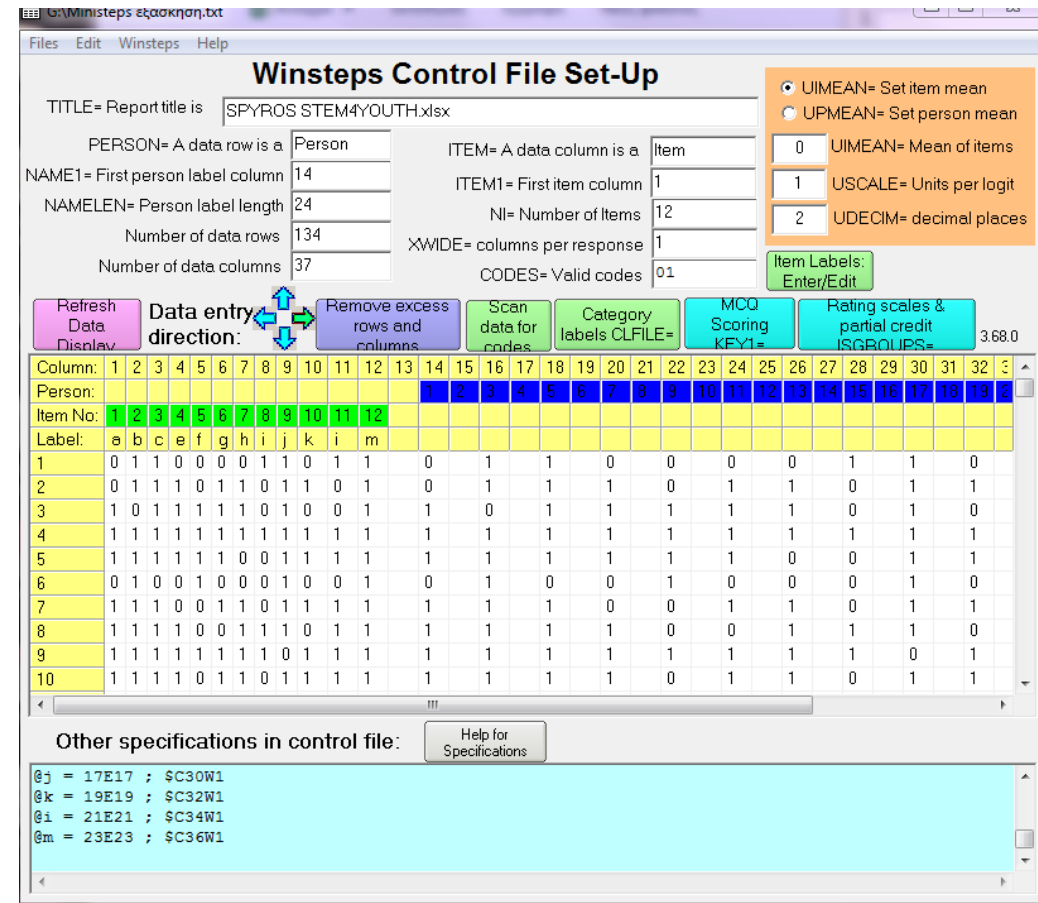
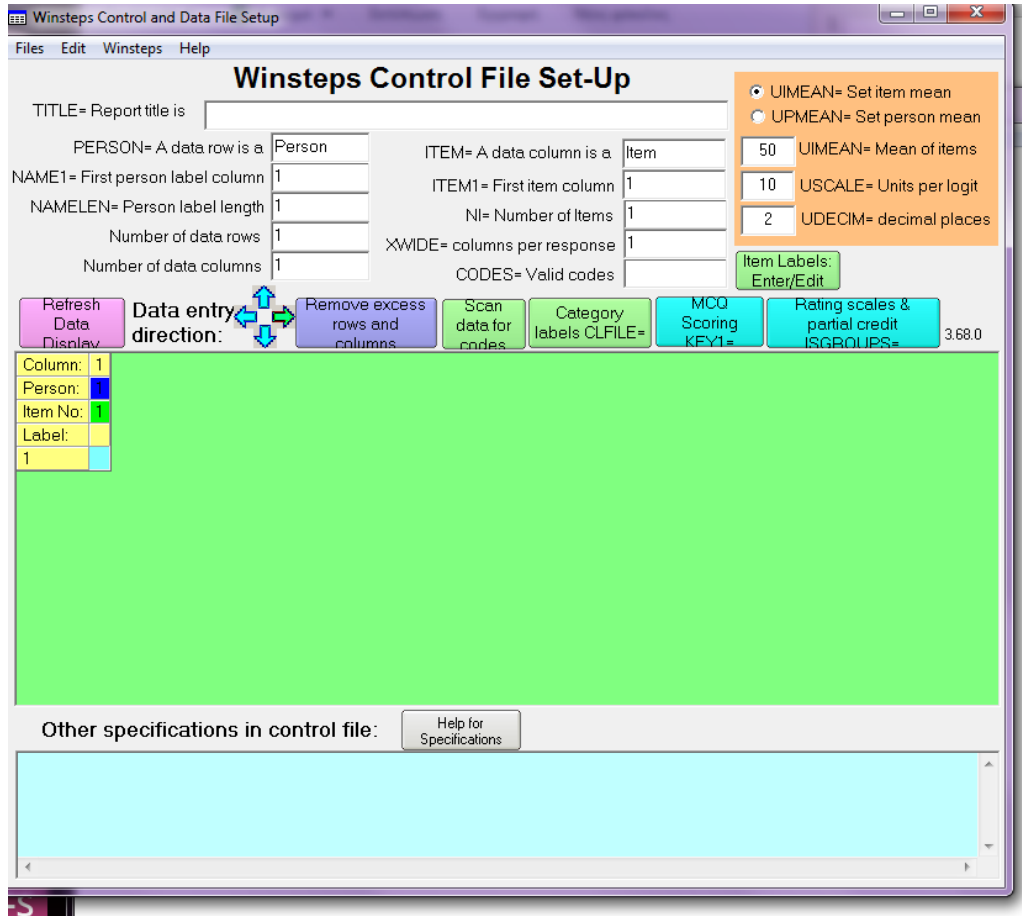
- Windows-native [Winsteps 4.4.1](#), April 2019, for Rasch measurement and analysis, 9,999,999 people, 60,000 items, 255 categories per item.



Κατεβάστε το Ministeps:
<https://www.winsteps.com/index.htm>



Πατήστε εδώ



Πηγαίνετε στο Files, Read Control and data file και φορτώστε το αρχείο «Ministeps εξάσκηση.txt»

Πηγαίνετε στο Winsteps, πατήστε Start Winsteps (does no save) και στο επόμενο παράθυρο...

```
W Ministeps εξάσκηση.txt
File Edit Diagnosis Output Tables Output Files Batch Help Specification Plots Excel/RSSST Graphs Data Setup
WINSTEPS Version 4.1.0 May 11 2019 18:22
Current Directory: G:\

Name of control file:
G:\Ministeps εξάσκηση.txt

Report output file name (or press Enter for temporary file, Ctrl+O for Dialog Box):
```

... πατήστε δύο φορές το enter

2019 18:23

INPUT: 134 PERSON 12 ITEM REPORTED: 134 PERSON 12 ITEM 2 CATS

WINSTEPS 4.1.0

2 Ministeps εξάσκηση.bt

File Edit Diagnosis Output Tables Output Files Batch Help Specification Plots Excel/RSSST Graphs Data Setup

WINSTEPS Version 4.1.0 May 11 2019 18:23

Current Directory: G:\

Name of control file:

G:\Ministeps εξάσκηση.txt

Report output file name (or press Enter for temporary file, Ctrl+O for Dialog Box):

Extra specifications (if any). Press Enter to analyze:

Temporary Workfile Directory: C:\Users\UoA\AppData\Local\Temp\

Reading Control Variables ..

Input in process:

Input Data Record:

01100011011 0 1 1 0 0 0 0 1 1 0 1 1

^I ^N^P

134 PERSON Records Input

CONVERGENCE TABLE
-Control: G:\Ministeps εξάσκηση.txt Output:

PROX ACTIVE COUNT EXTREME 5 CHANGE MAX LOGIT CHANGE
| ITERATION PERSON ITEM CATS PERSON ITEM MEASURES STRUCTURE|

>=====
| 1 134 12 2 4.32 1.13 2.3979 |
>=====
| 2 133 12 2 4.65 1.35 .2959 |

Probing data connection: to skip out: Ctrl+F - to bypass: subset=no
Processing unanchored persons ...

>=====
Data fully connected. No subsets found

Control: G:\Ministeps εξάσκηση.txt Output: G:\ZOU760WS.TXT

JMLE MAX SCORE MAX LOGIT LEAST CONVERGED CATEGORY STRUCTURE
| ITERATION RESIDUAL* CHANGE PERSON ITEM CAT RESIDUAL CHANGE|

>=====
| 1 -1.98 .4555 4 1* |
>=====
| 2 -1.08 .1306 6 8* |

>=====
| 3 -.55 .0488 6 8* |
>=====
| 4 -.27 .0202 6 8* |

>=====
| 5 -.14 .0089 11 8* |
>=====
| 6 -.07 .0042 11 8* |

>=====
Calculating Fit Statistics
>=====
Time for estimation: 0:0:0.199

Processing Table 0
SPYROS STEM4YOUTH.xlsx

PERSON 134 INPUT 134 MEASURED
TOTAL COUNT MEASURE REALSE IMNSQ ZSTD OMNSQ ZSTD

MEAN 6.8 12.0 .38 .75 1.00 .1 .99 .0|
P.SD 2.6 .0 1.22 .17 .25 .9 .44 .9|
REAL RMSE .77 TRUE SD .94 SEPARATION 1.22 PERSON RELIABILITY .60|

ITEM 12 INPUT 12 MEASURED
TOTAL COUNT MEASURE REALSE IMNSQ ZSTD OMNSQ ZSTD

MEAN 76.3 134.0 .00 .21 1.00 .0 .99 .0|
P.SD 20.2 .0 .83 .01 .11 1.1 .19 1.2|
REAL RMSE .21 TRUE SD .81 SEPARATION 3.82 ITEM RELIABILITY .94|

Output written to G:\ZOU760WS.TXT
CODES= 01

Τώρα, πηγαίνετε στο Output Tables και επιλέξτε Item map

MEASURE PERSON - MAP - ITEM

<more>|<rare>

3 . +

|
|
|
|

|
|
|
|

T|

|
|
|
|

|
|
|
|

|
|
|
|

|
|
|
|

|
|
|
|

|
|
|
|

|
|
|
|

|
|
|
|

2 + | i

|
|
|
|

|

| T |

| S |

| a |

|
|
|
|

|

|
|
|
|

1 +

|
|
|
|

| S

|
|
|
|

| g |

| M |

|
|
|
|

| c |

0 ##### +Mf

| h |

| i |

|
|
|
|

| j

| e m |

|
|
|
|

S|S

| b |

-1 + k

Να το Item Map. Σχολιάστε το