

Ο ΚΙΟΝΑΣ ΜΕ ΤΙΣ ΧΟΡΕΥΤΡΙΕΣ ΔΕΛΦΟΙ



Omphalos

Drum 8

Drum 6 & 7

Drum 5

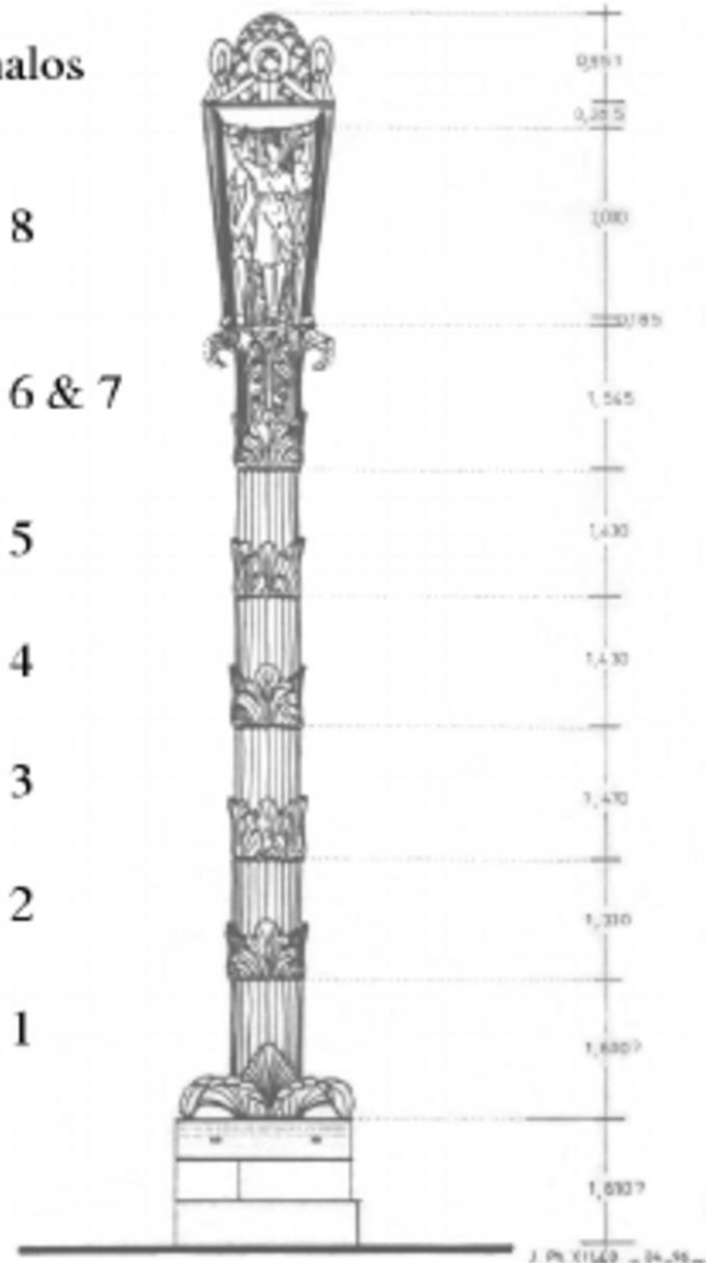
Drum 4

Drum 3

Drum 2

Drum 1

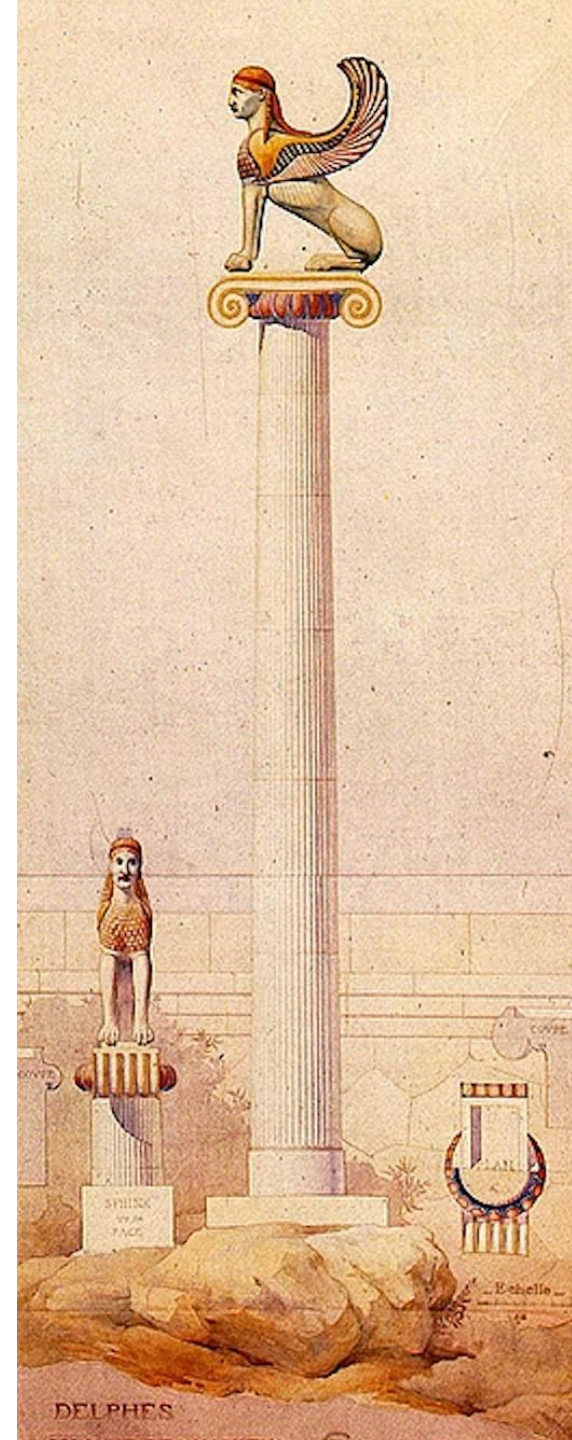
Base



Ο ΚΙΟΝΑΣ ΜΕ ΤΙΣ ΧΟΡΕΥΤΡΙΕΣ ΔΕΛΦΟΙ



Η ΣΦΙΓΓΑ ΤΩΝ ΝΑΕΙΩΝ. ΔΕΛΦΟΙ

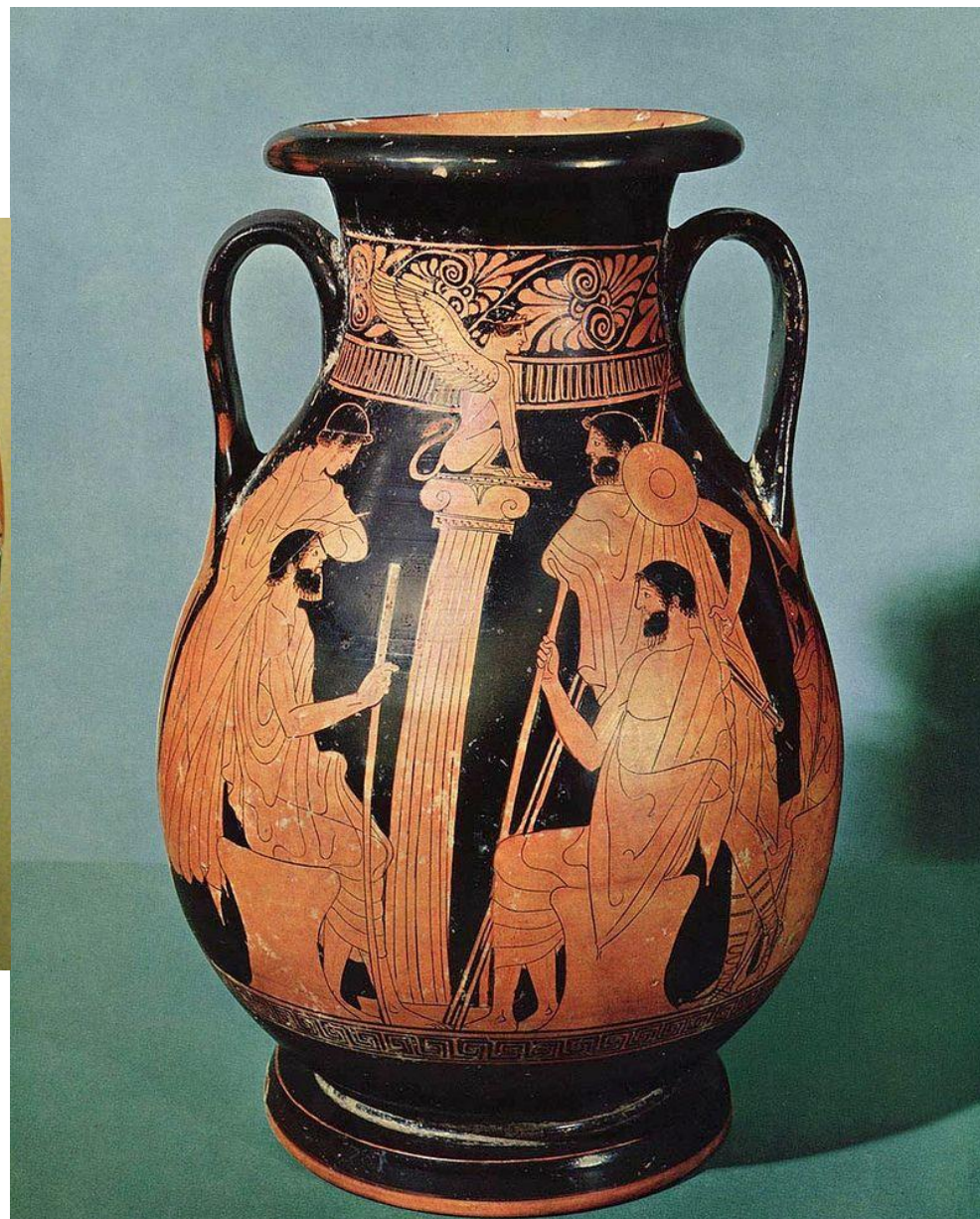
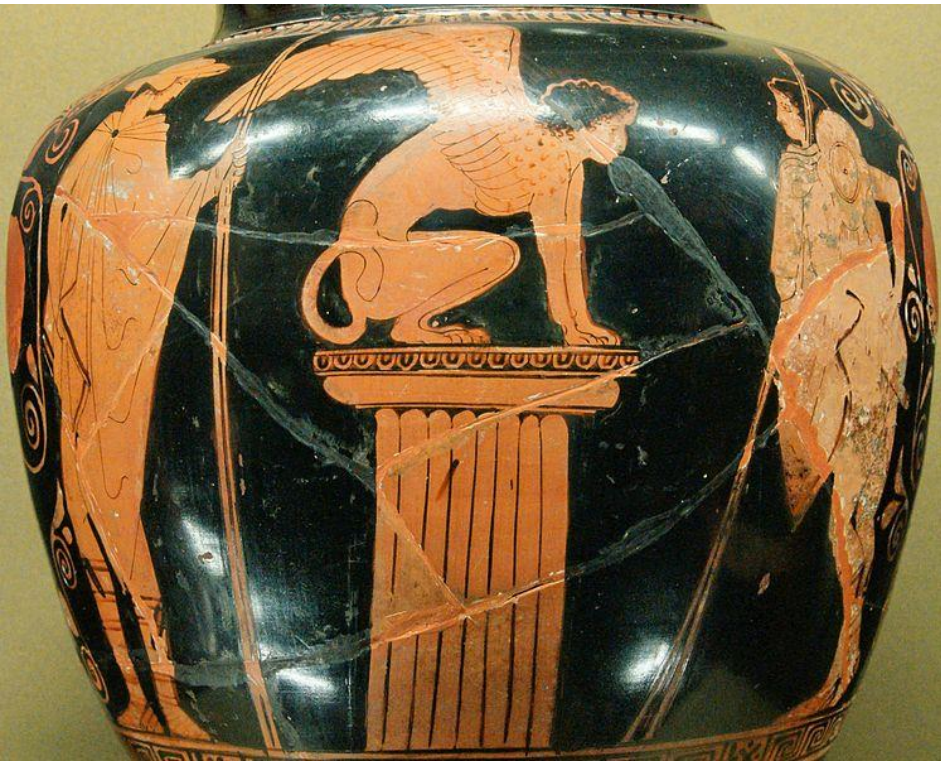




ΣΦΙΓΓΑ ΤΩΝ ΝΑΞΙΩΝ, ΔΕΛΦΟΙ



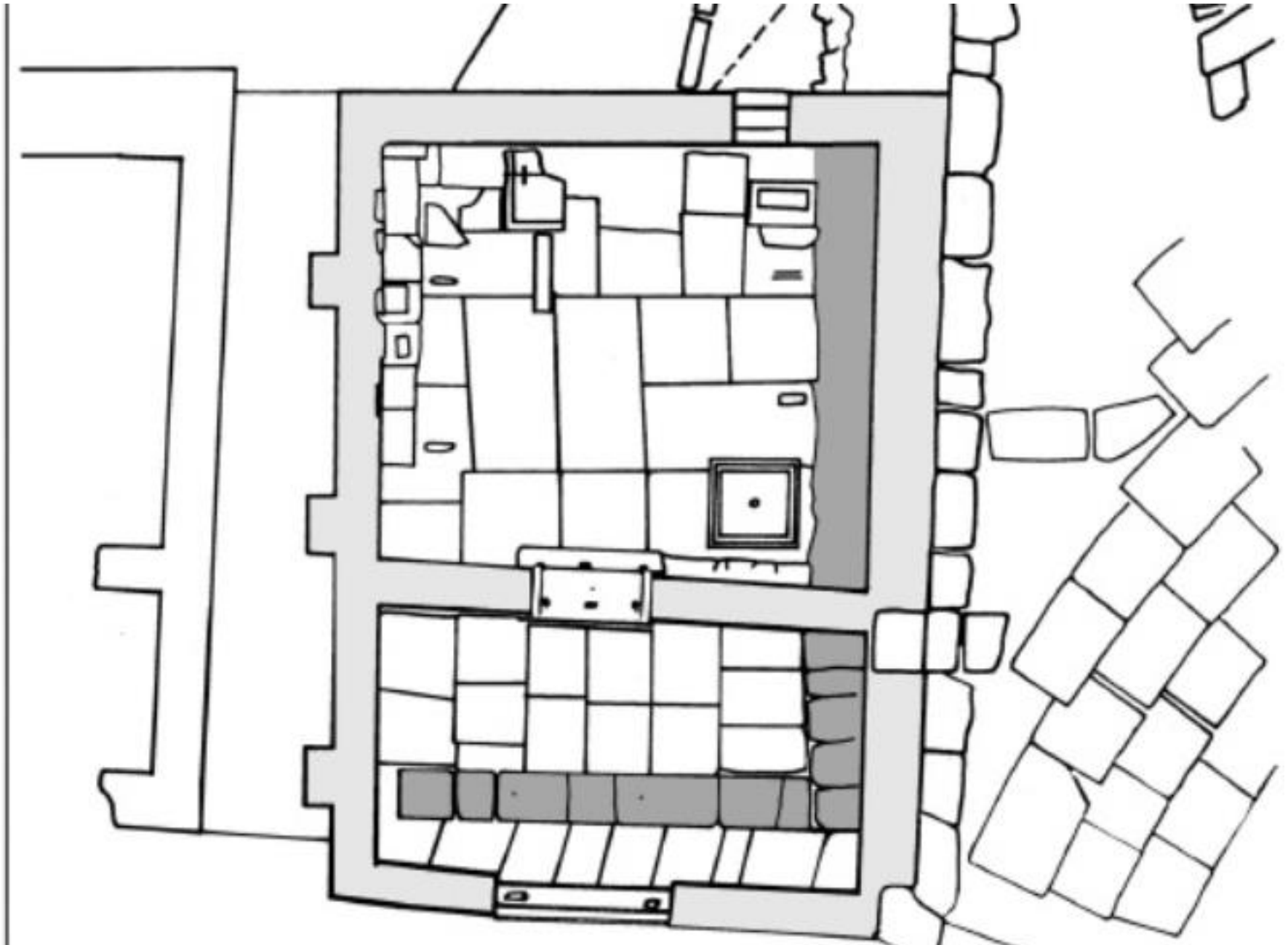
ΣΦΙΓΓΑ, ΜΟΥΣΕΙΟ ΔΗΛΟΥ



ΑΣΚΛΗΠΕΙΑ

- ΝΑΟΙ ΜΙΚΡΟΙ
- ΕΓΚΑΤΑΣΤΑΣΕΙΣ ΠΟΥ ΣΧΕΤΙΖΟΝΤΑΙ ΜΕ ΤΑ ΙΑΜΑΤΑ

ΝΑΟΣ ΑΣΚΛΗΠΙΟΥ. ΒΟΥΘΡΩΤΟΣ



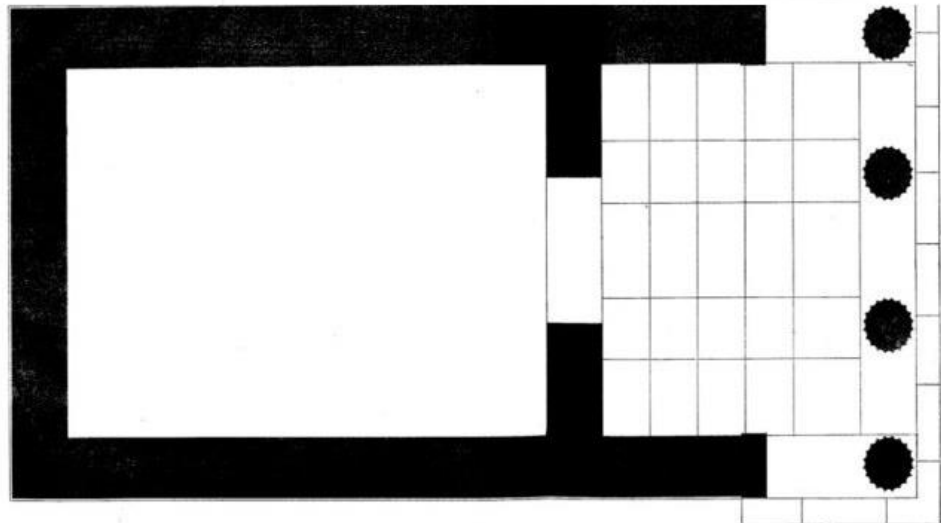
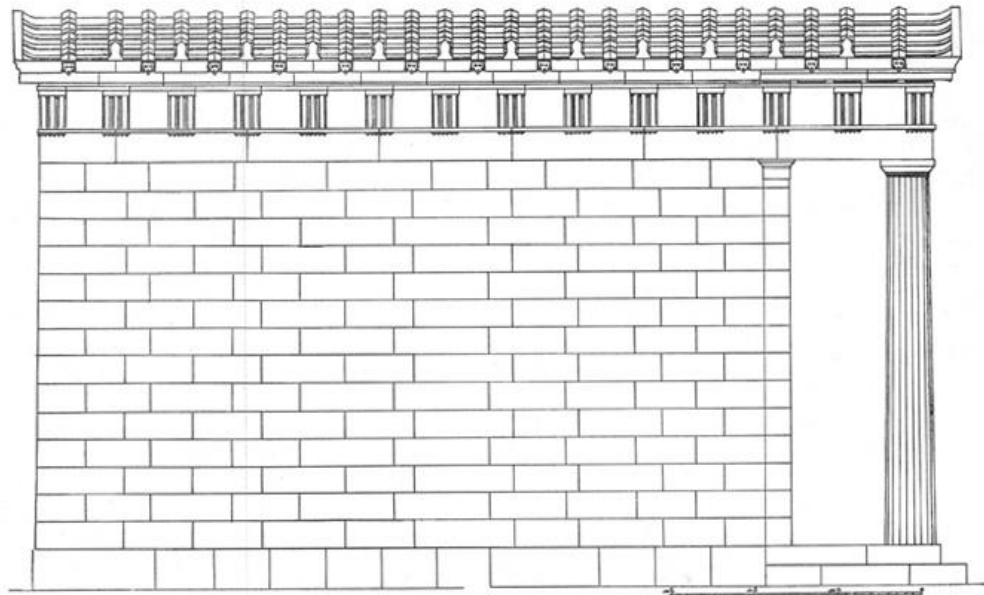
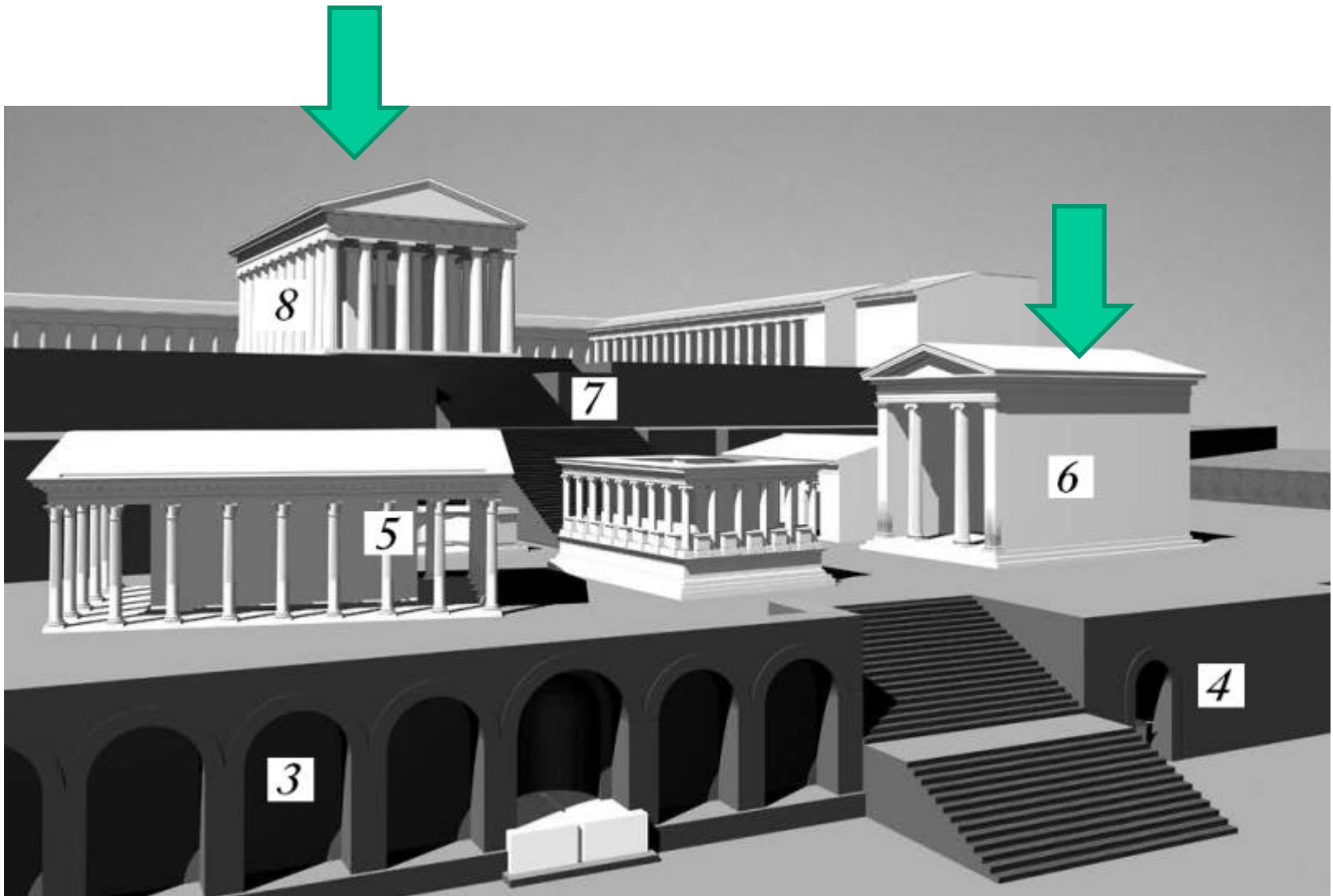


Fig. 65. — Temple of Asklepios, plan, restorations.

ΝΑΟΣ ΑΣΚΛΗΠΙΟΥ. ΔΗΛΟΣ

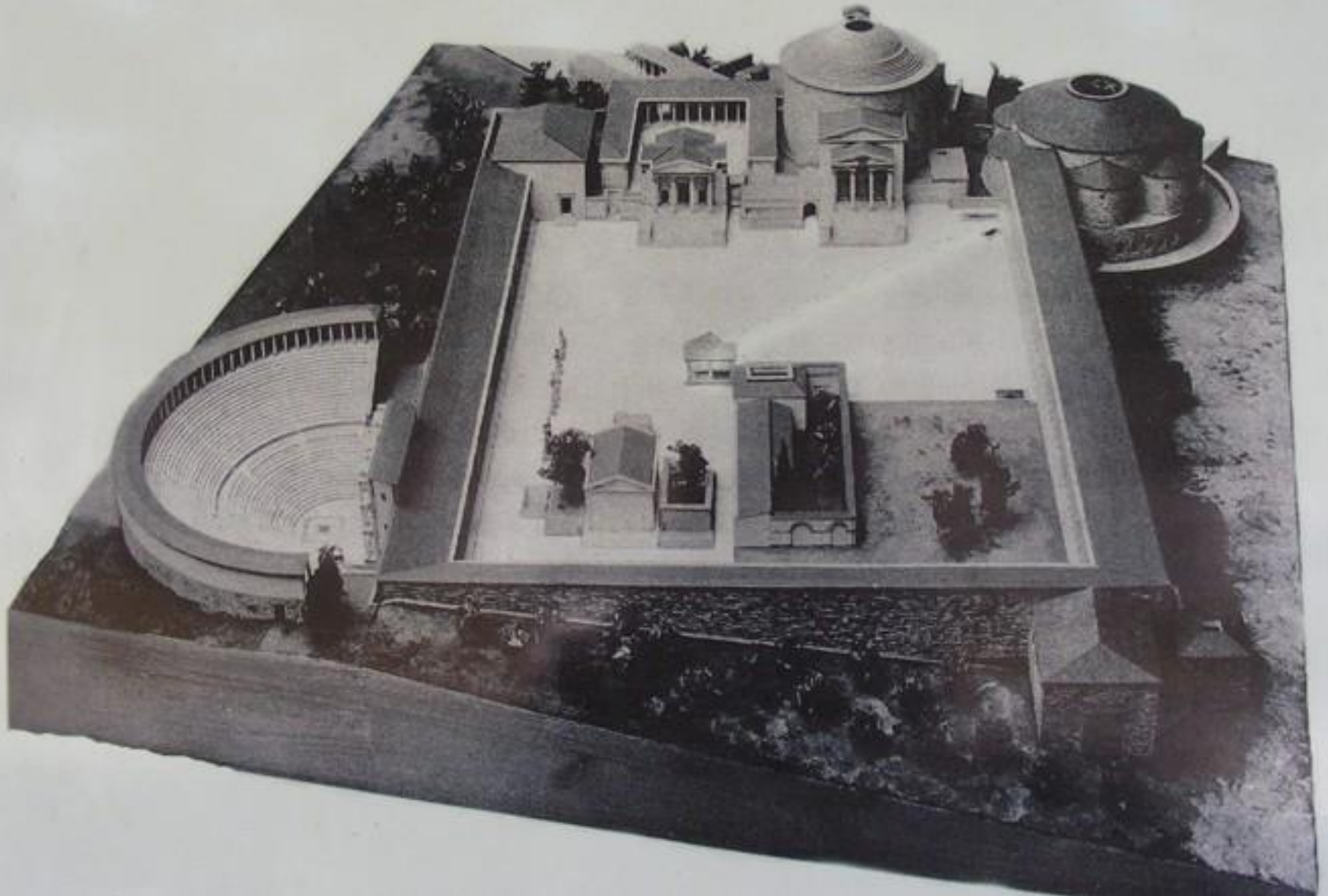


ΝΑΟΙ ΑΣΚΛΗΠΙΟΥ. ΚΩΣ



ΝΑΟΣ ΑΣΚΛΗΠΙΟΥ. ΚΩΣ

THE TREATMENT METHODS APPLIED IN ASKLEPIEION



Θεοί επισκέπτες. ΠΕΡΓΑΜΟΣ

THE EARLY TEMENOS

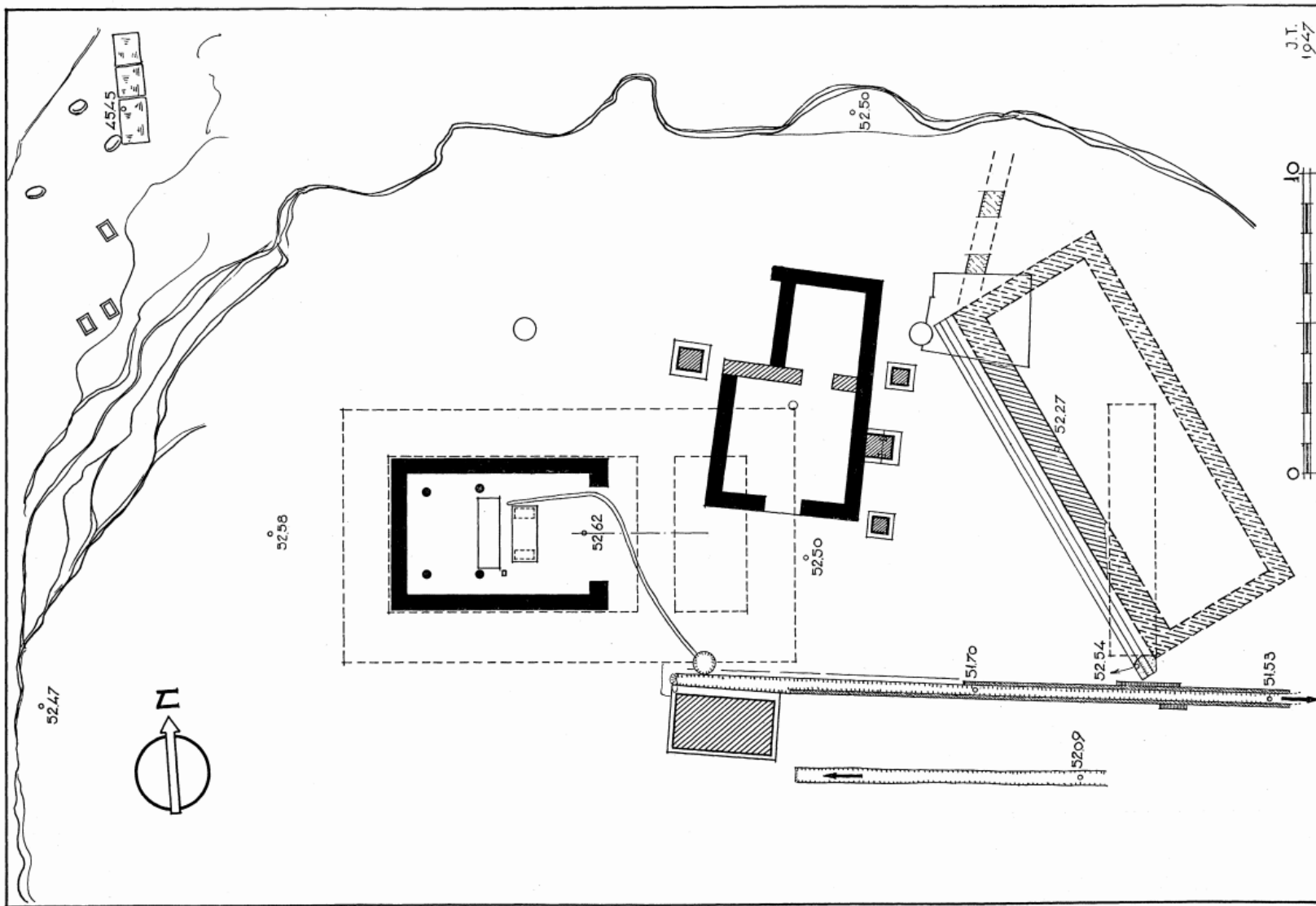
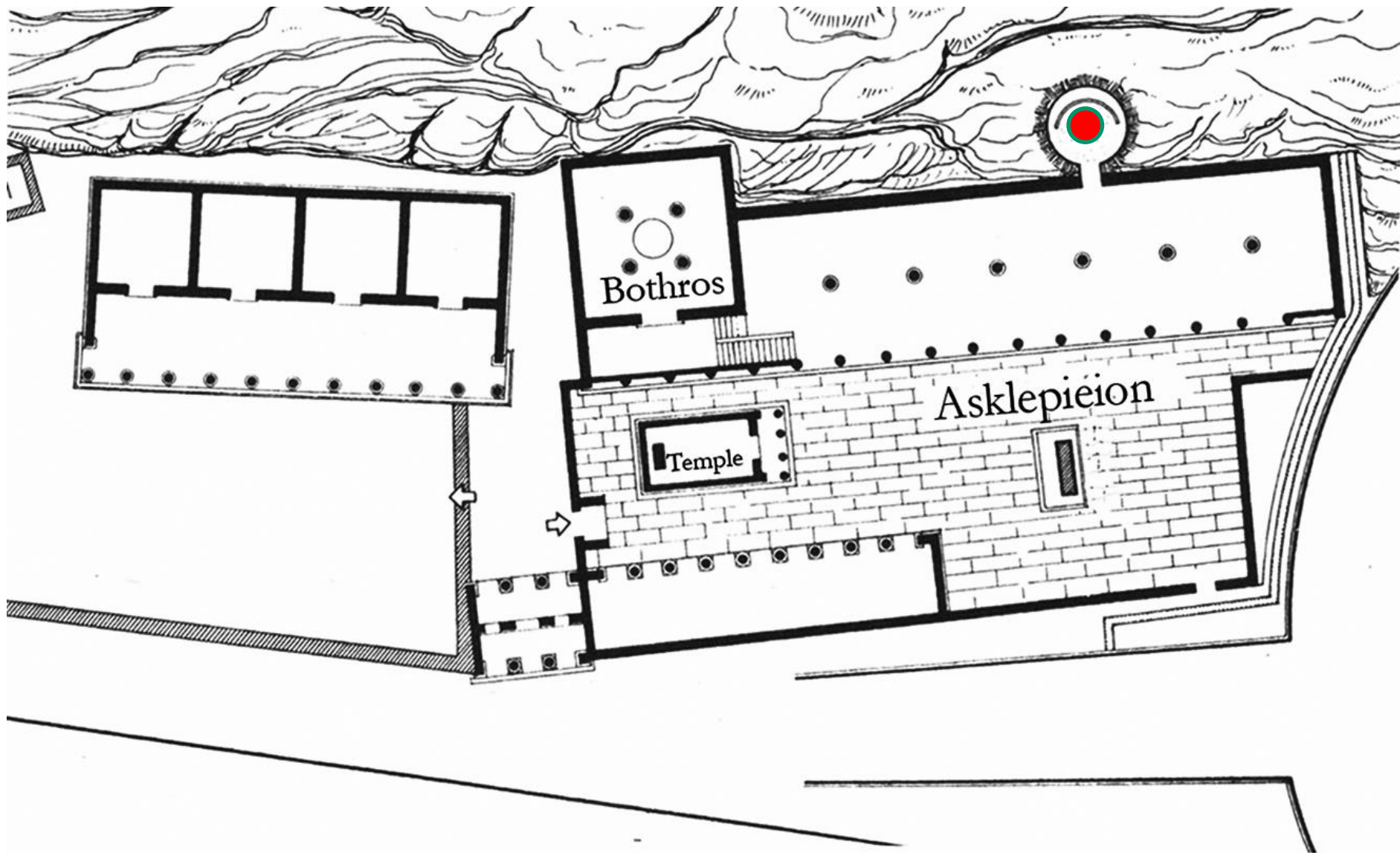
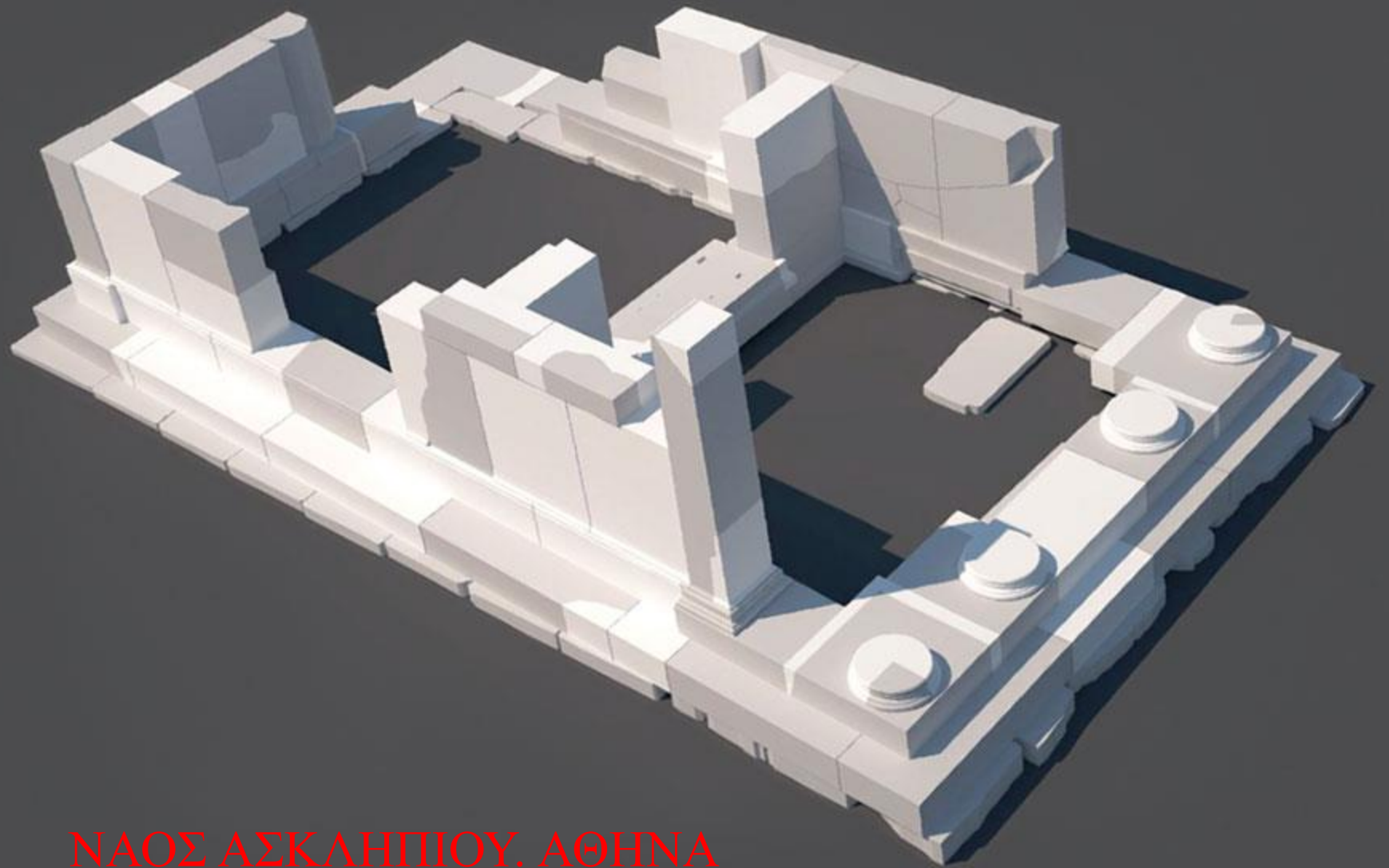


Fig. 2. The Early Temenos. Restored Plan.

ΑΣΚΛΗΠΕΙΟ. ΑΘΗΝΑ

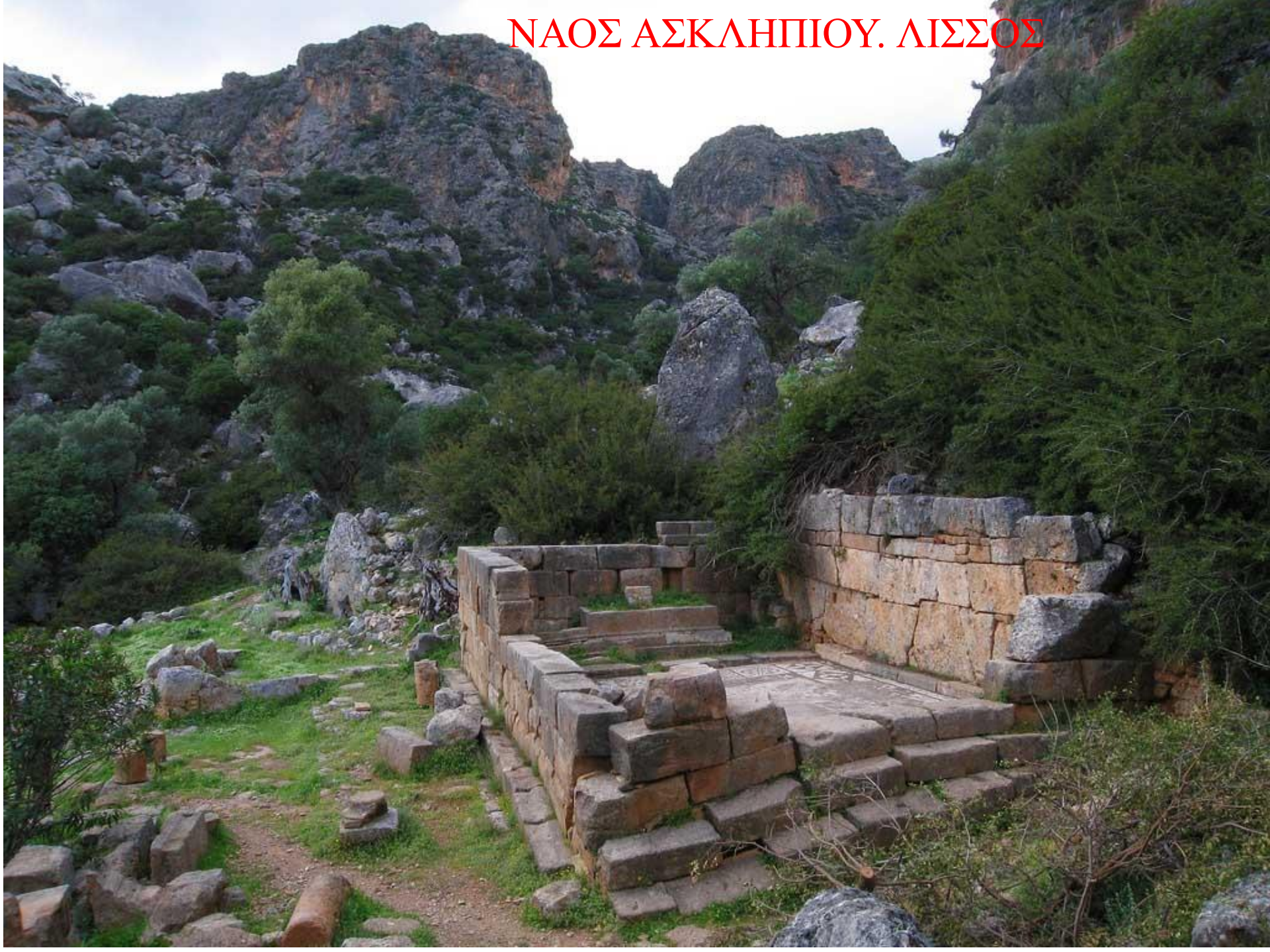


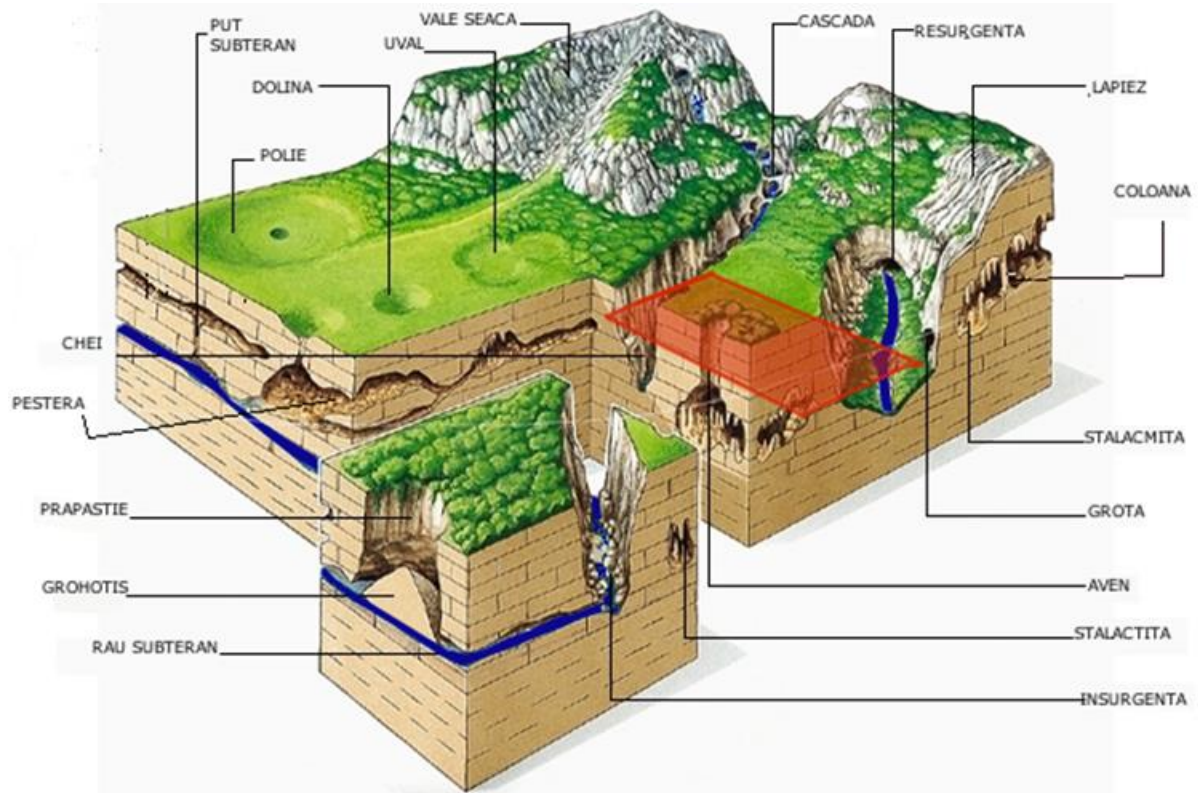
Άβατον / Εγκοιμητήριο, φρέαρ, κρήνη

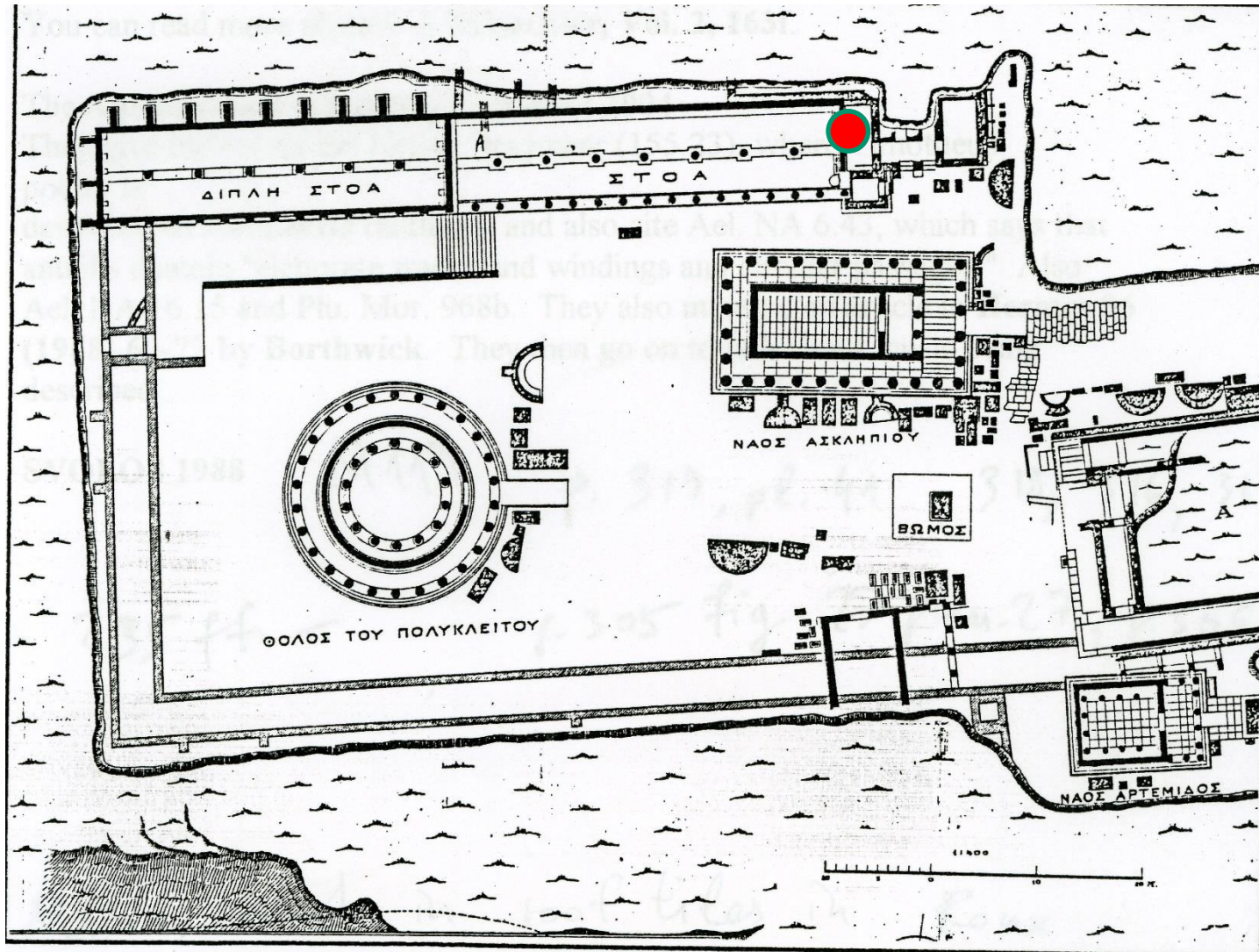


ΝΑΟΣ ΑΣΚΛΗΠΙΟΥ. ΑΘΗΝΑ

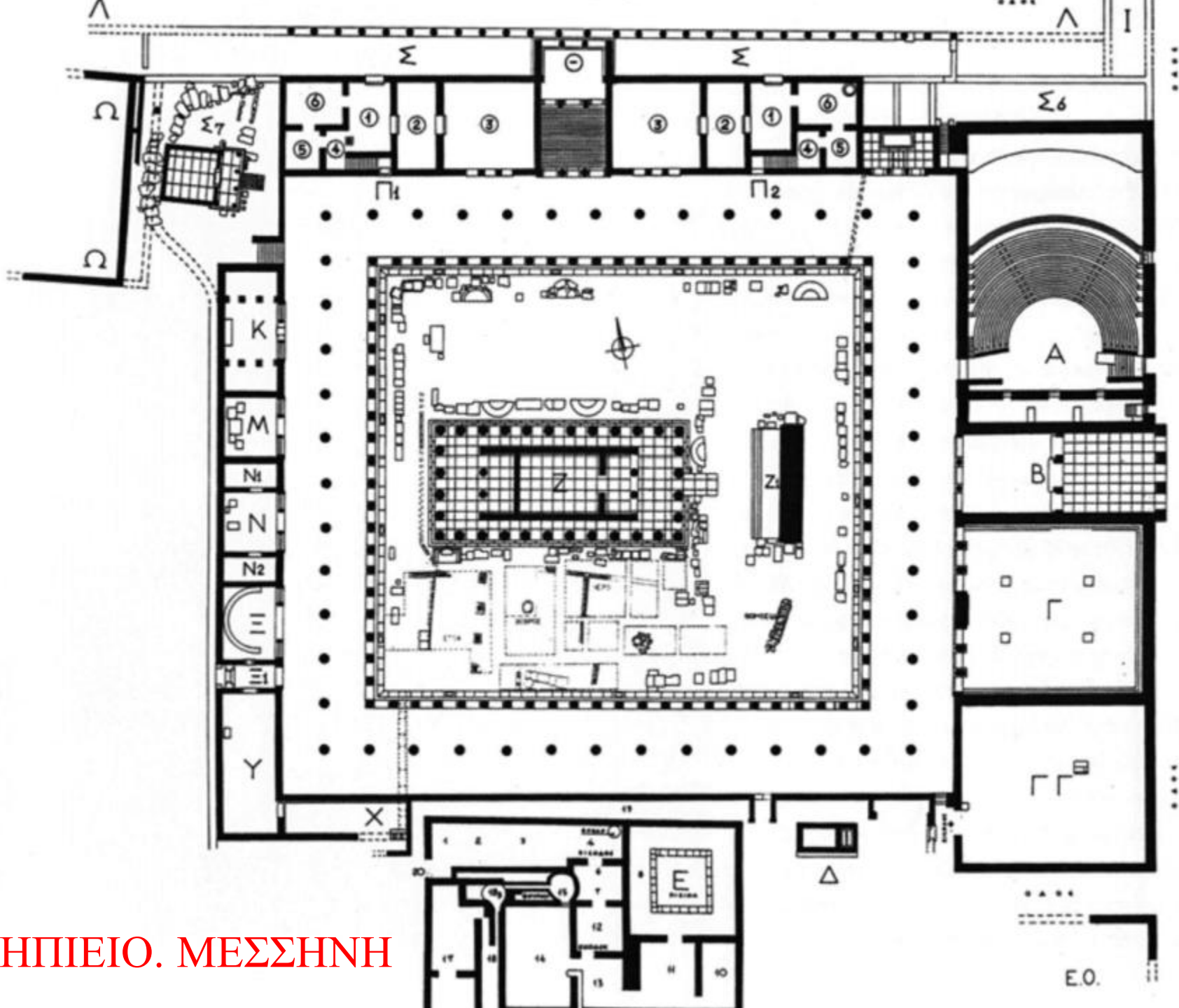
ΝΑΟΣ ΑΣΚΛΗΠΙΟΥ. ΛΙΣΣΟΣ







ΑΣΚΛΗΠΕΙΟ. ΕΠΙΔΑΥΡΟΣ



ΑΣΚΛΗΠΕΙΟ. ΜΕΣΣΗΝΗ

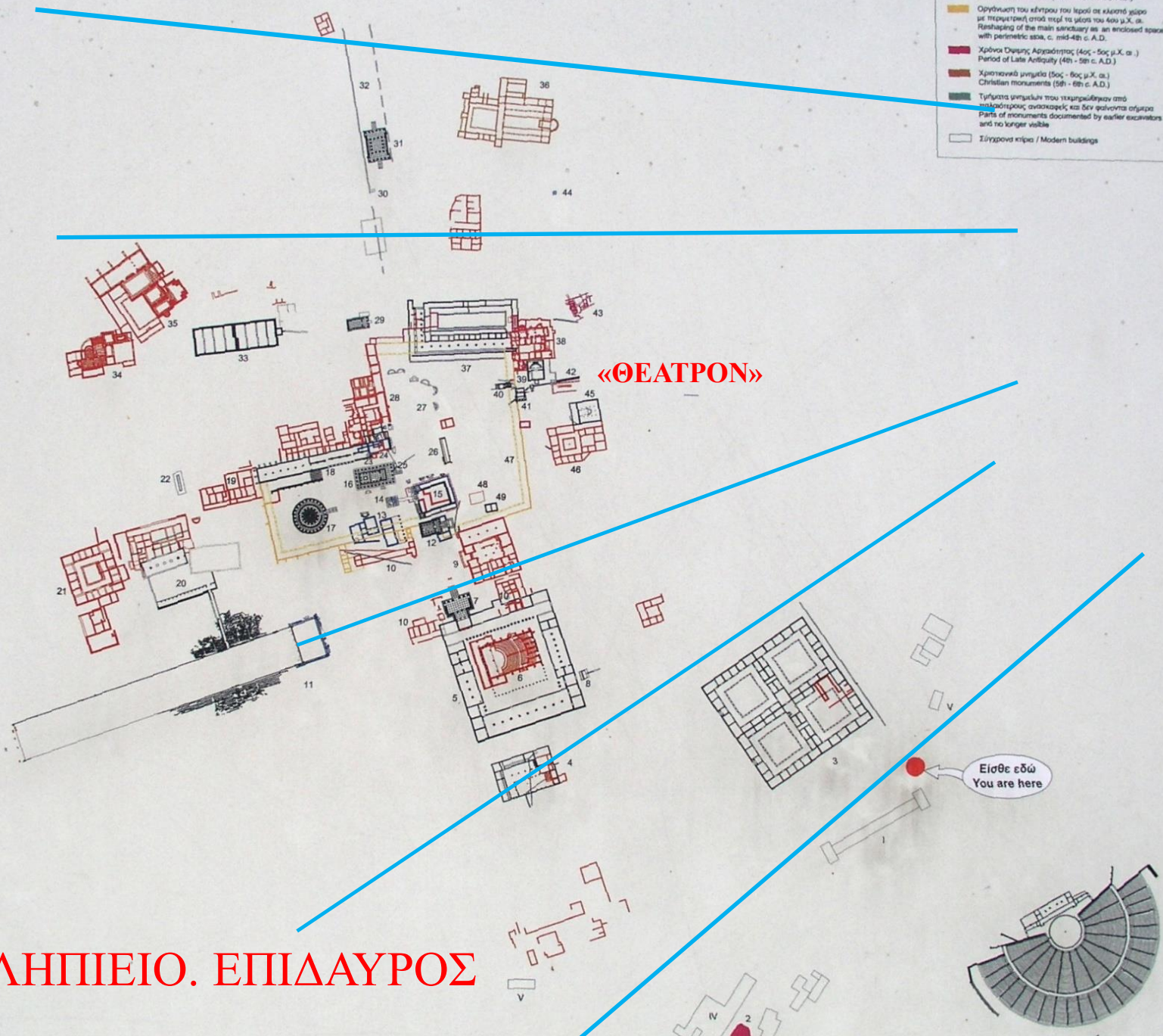
E.O.



ΑΣΚΛΗΠΕΙΟ. ΜΕΣΣΗΝΗ



- Περίοδος Πρωτοκριστού (1ος - 2ος μ.Χ. α.)
Period of Protocrisis (1st c. - 2nd c. A.D.)
- Περίοδος Ρωμαϊκής (1α c. B.C. - 3rd c. A.D.)
Period of Roman rule (1st c. B.C. - 3rd c. A.D.)
- Οργάνωση του κέντρου του λαού σε κλειστό χώρο με περιμετρικό αβείο (4η - 5ος μ.Χ. α.)
Reshaping of the main sanctuary as an enclosed space with perimeter stoa, c. mid-4th c. A.D.
- Χρόνια Ουρανού, Αργαίτηρος (4ος - 5ος μ.Χ. α.)
Period of Late Antiquity (4th - 5th c. A.D.)
- Χριστιανικά μνημεία (5ος - 6ος μ.Χ. α.)
Christian monuments (5th - 6th c. A.D.)
- Τμήματα μνημείων που τεκμηριώθηκαν από παλαιότερους ανασκαφείς και δεν φαίνονται οφθαλμικά
Parts of monuments documented by earlier excavators and no longer visible
- Σύγχρονα κτίρια / Modern buildings



ΑΣΚΛΗΠΕΙΟ. ΕΠΙΔΑΥΡΟΣ

Navigation: Previous, Next, 48 / 153, Go to Page

Document View: Single (selected), Continuous, Facing, Facing Continuous, Fullscreen

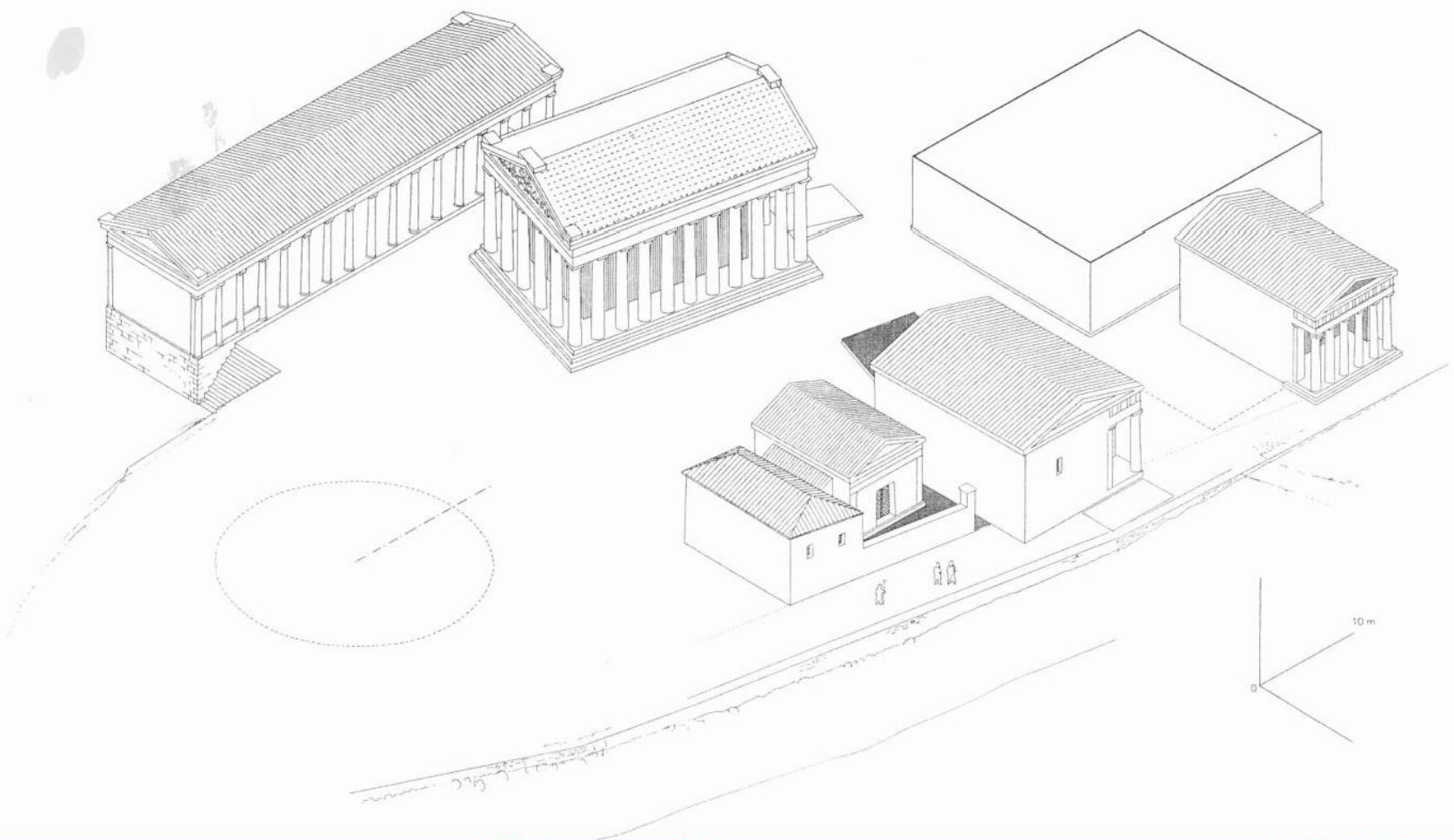
Side By Side View: Side By Side View, Synchronous Scrolling, Change Documents

Page View: Fit Page, Fit Width, Actual Size (100%)

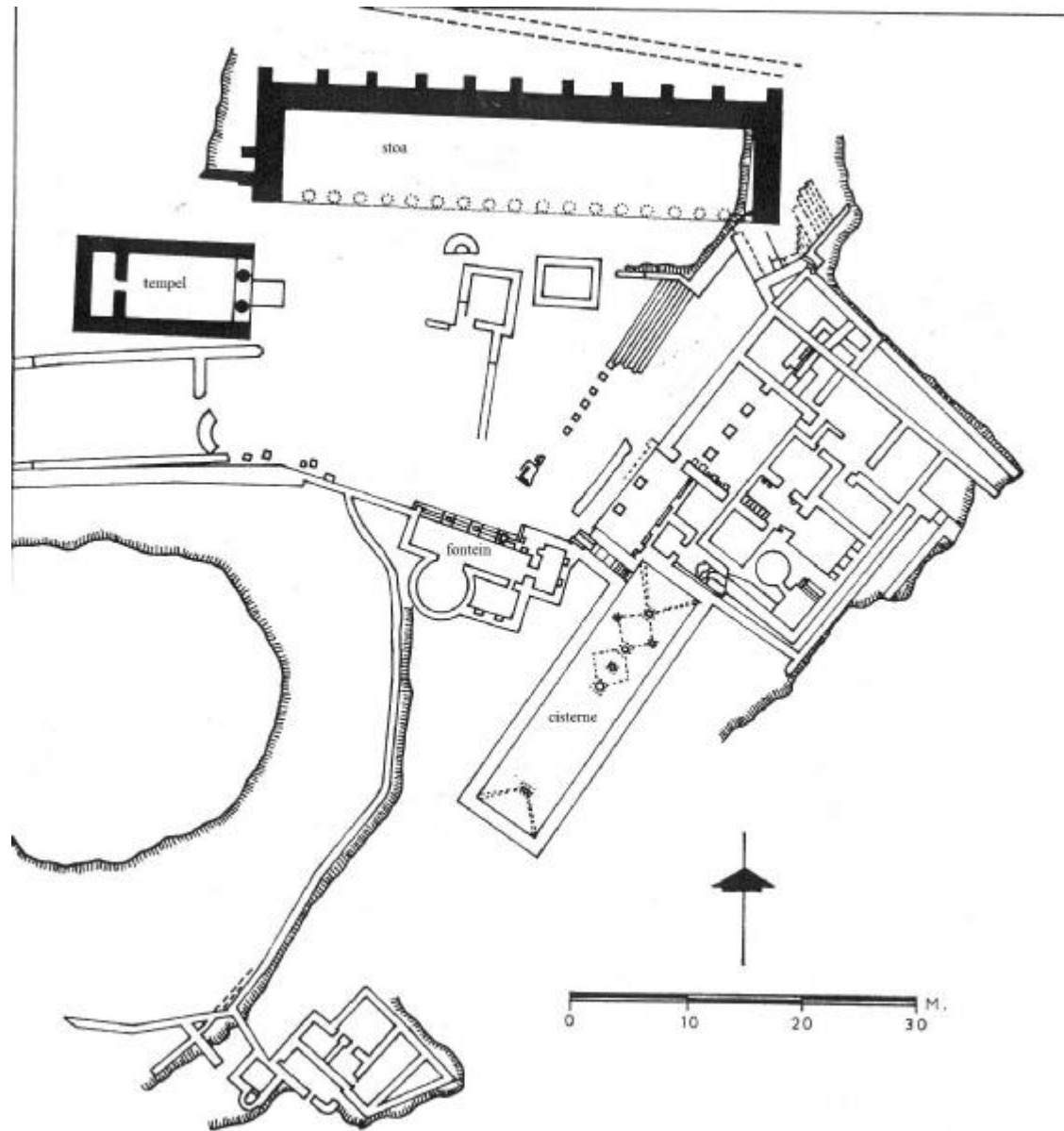
Rotate: Left, Right

Tools: Snapshot, Options

Documents: Multiple, Single, New Features Available. Get them now!



Vertical toolbar with icons for navigation, zoom, and other document management functions.



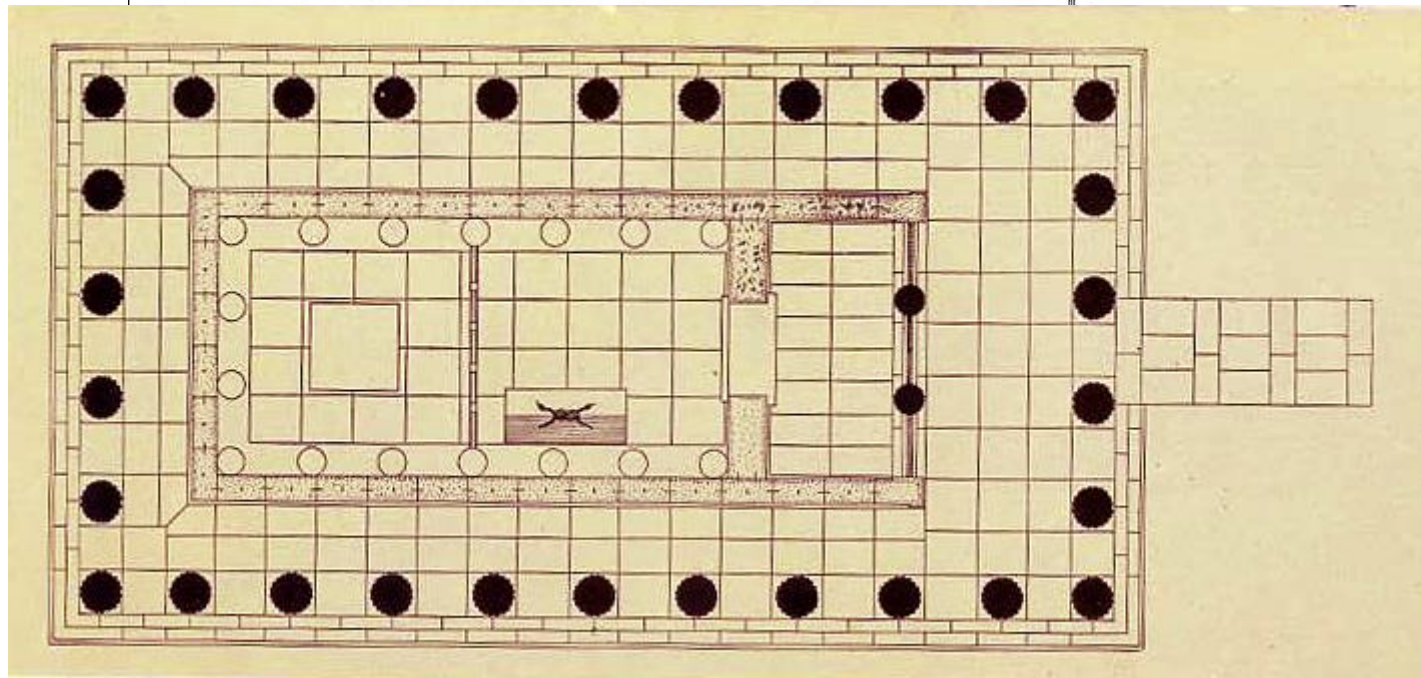
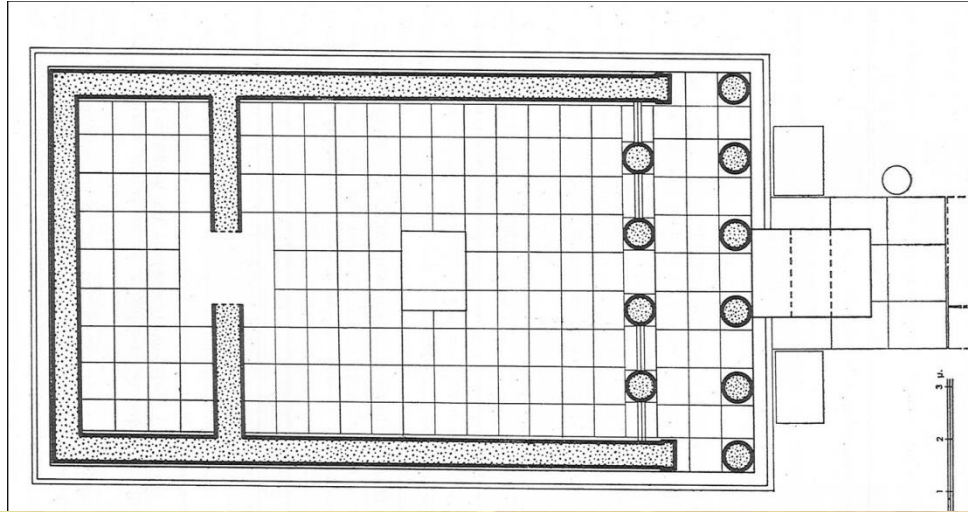
ΙΕΡΟ ΑΠΟΛΛΩΝΟΣ ΜΑΛΕΑΤΑ. ΕΠΙΔΑΥΡΟΣ

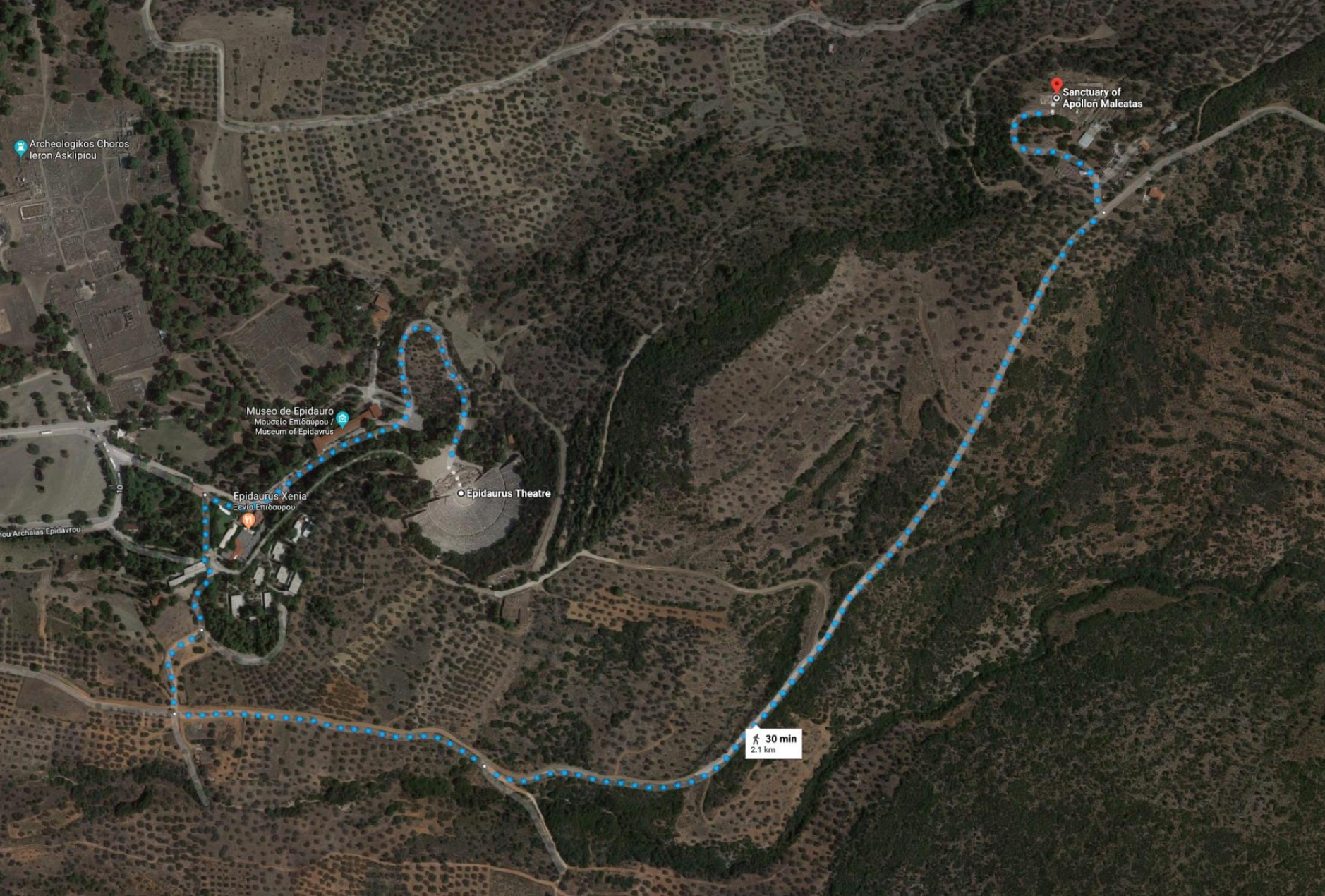


ΙΕΡΟ ΑΠΟΛΛΩΝΟΣ ΜΑΛΕΑΤΑ. ΕΠΙΔΑΥΡΟΣ

ΑΠΟΛΩΝ ΜΑΛΕΑΤΑΣ, ΕΠΙΔΑΥΡΟΣ

ΑΡΧΕΣ 4ου

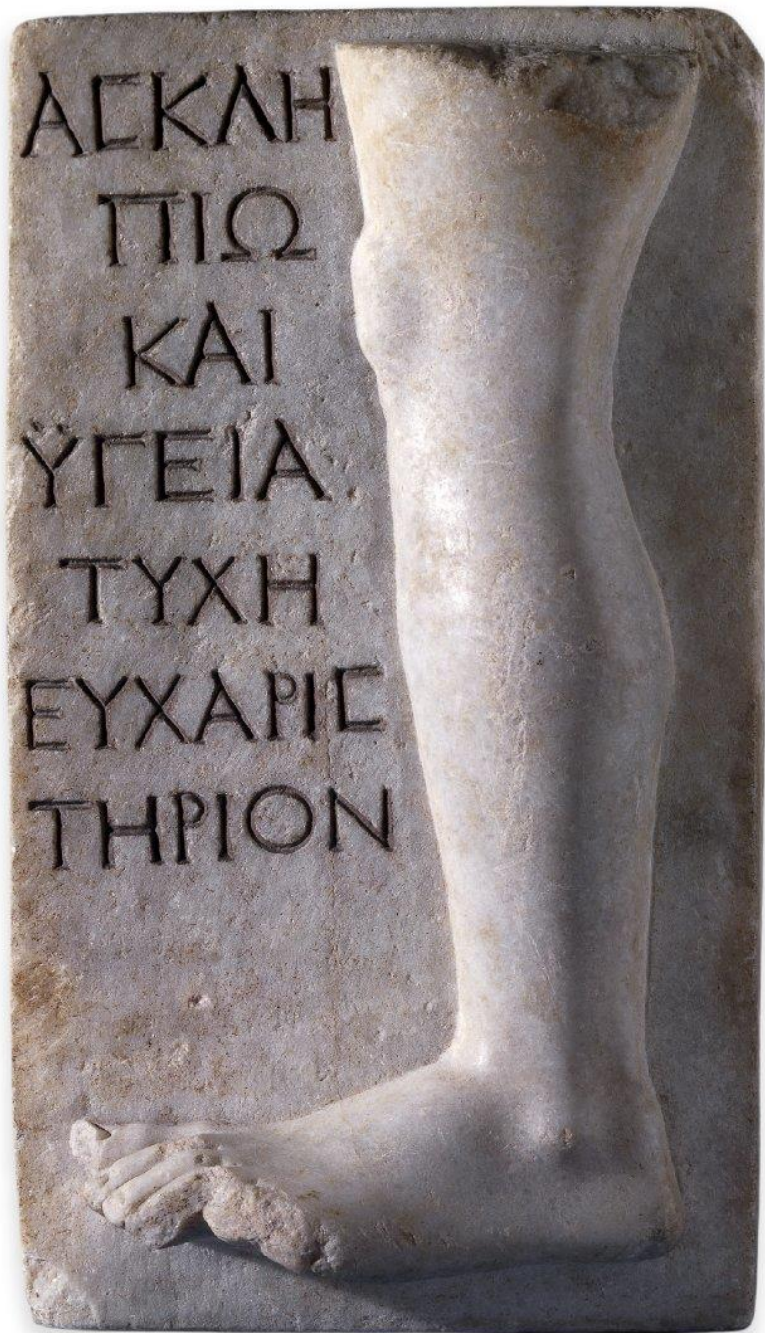




Κυν-όρτιον, Απόλλων κυνηγέτης

Σωτήρ

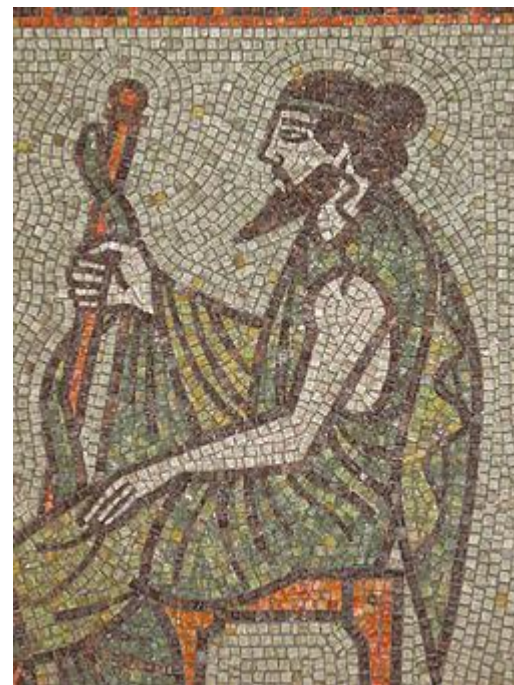








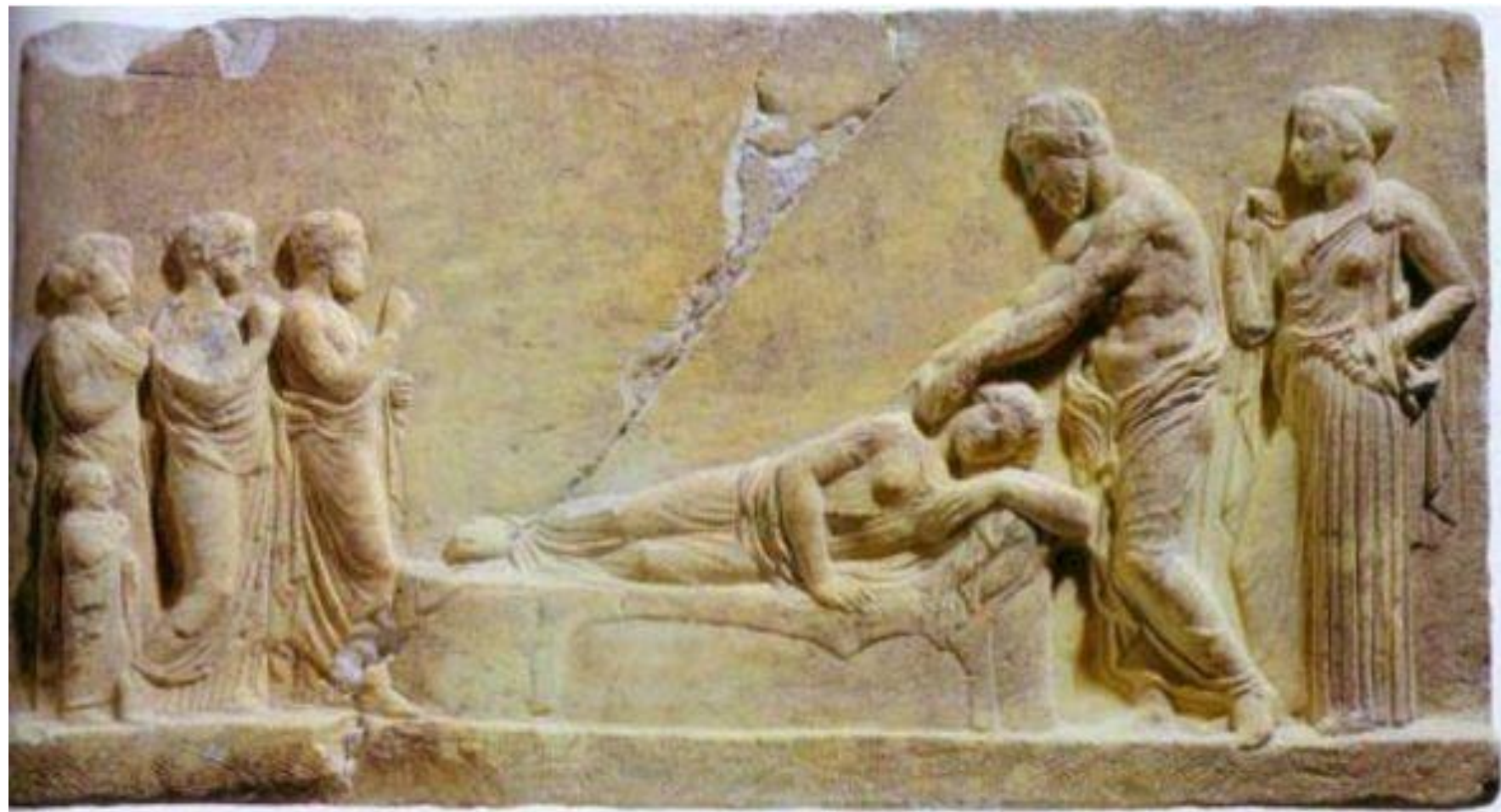
Τρίκκη.
Άφιξη του Ασκληπιού στην Κώ
(και Βαλάγραι, Λεβήνα).

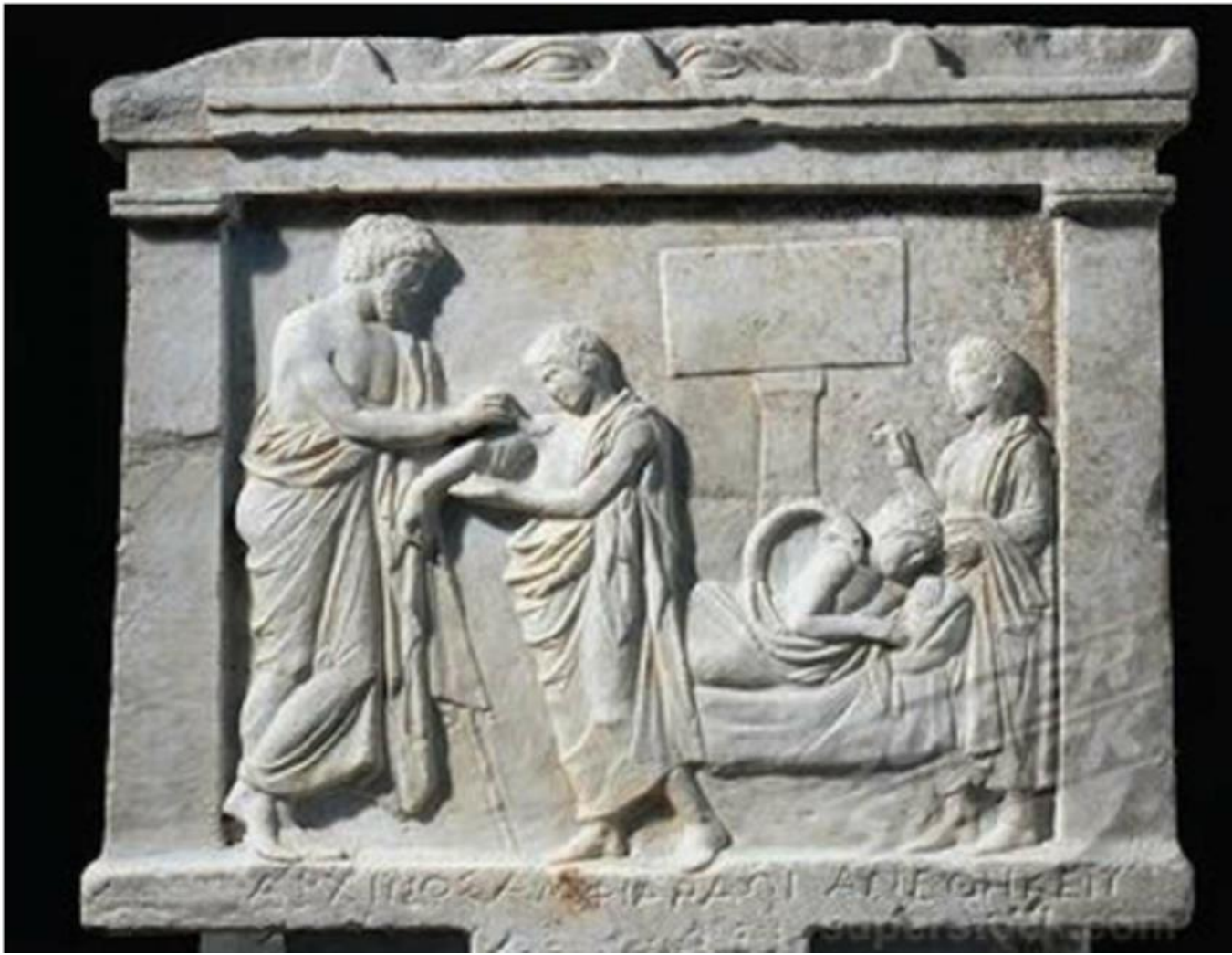


13 Κρήτη



ΑΛΕΞΙΟΣ ΤΟΜΕΛΟΥΧΟΣ

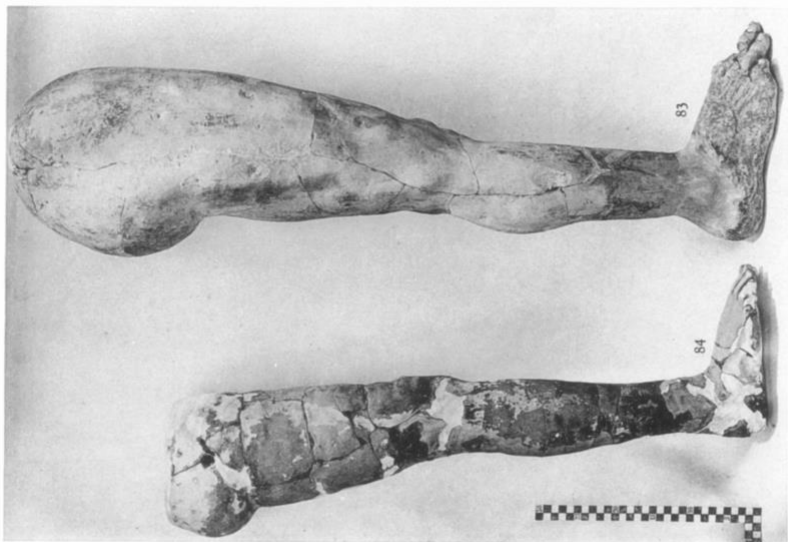
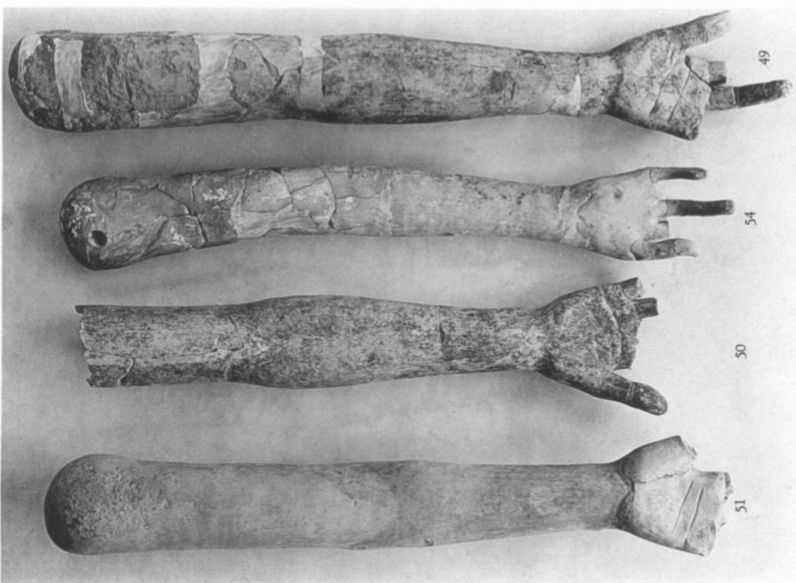






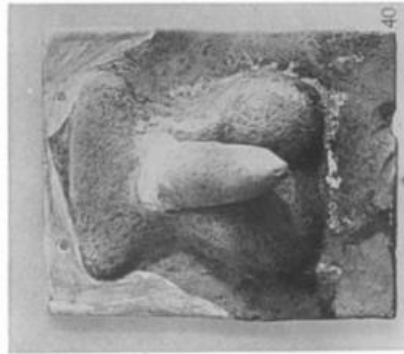
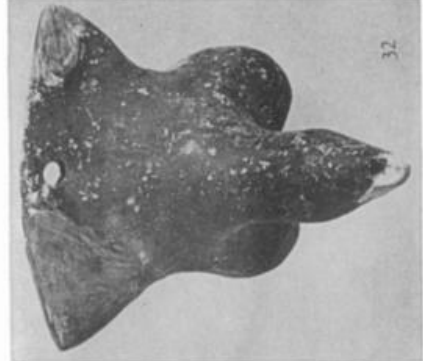
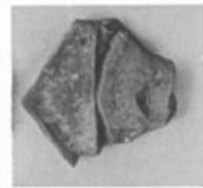
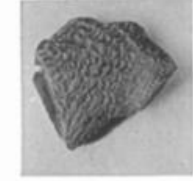
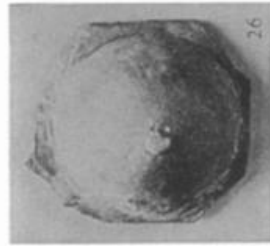
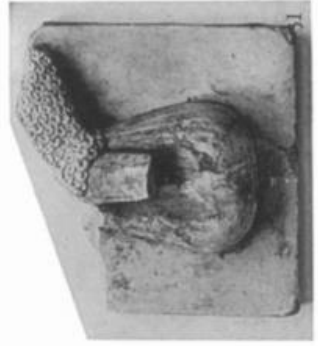
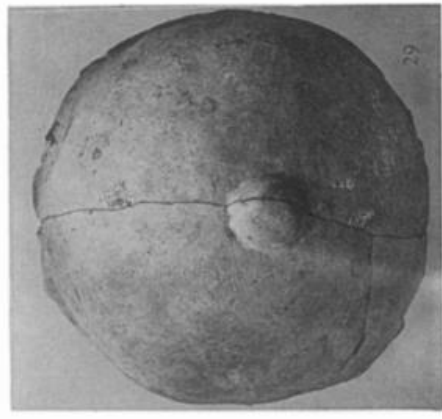


PLATE



Votive Legs

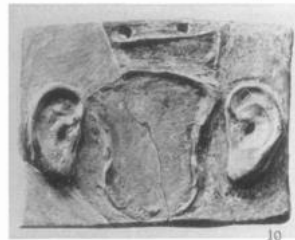
PLATE 33



Votive Breasts and Genitals



15



10



9



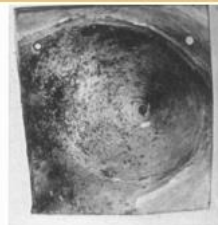
18



14



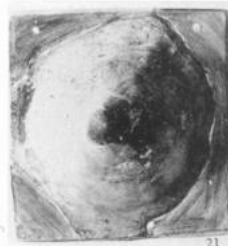
11



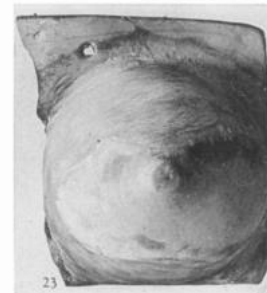
20



22



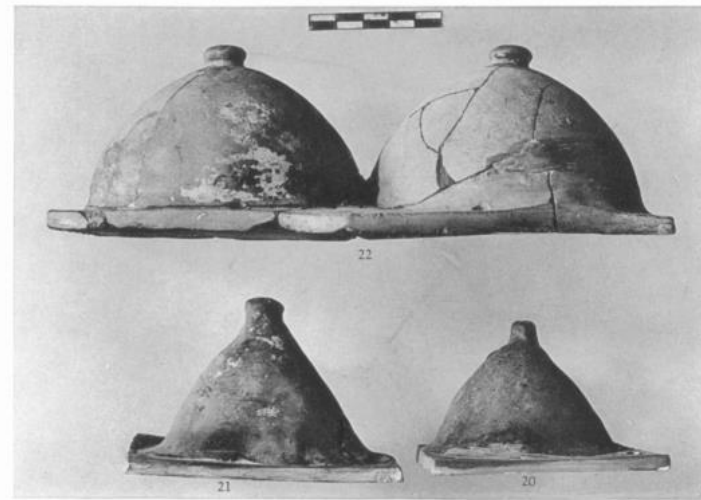
21



23



24



22



21



20

© American School of Classical Studies at Athens
For personal use only. License: CC-BY-NC-ND.

Votive Torsoes, Ears, and Eyes

Votive Breasts











ΙΑΤΡΙΚΑ ΕΡΓΑΛΕΙΑ. ΕΠΙΔΑΥΡΟΣ

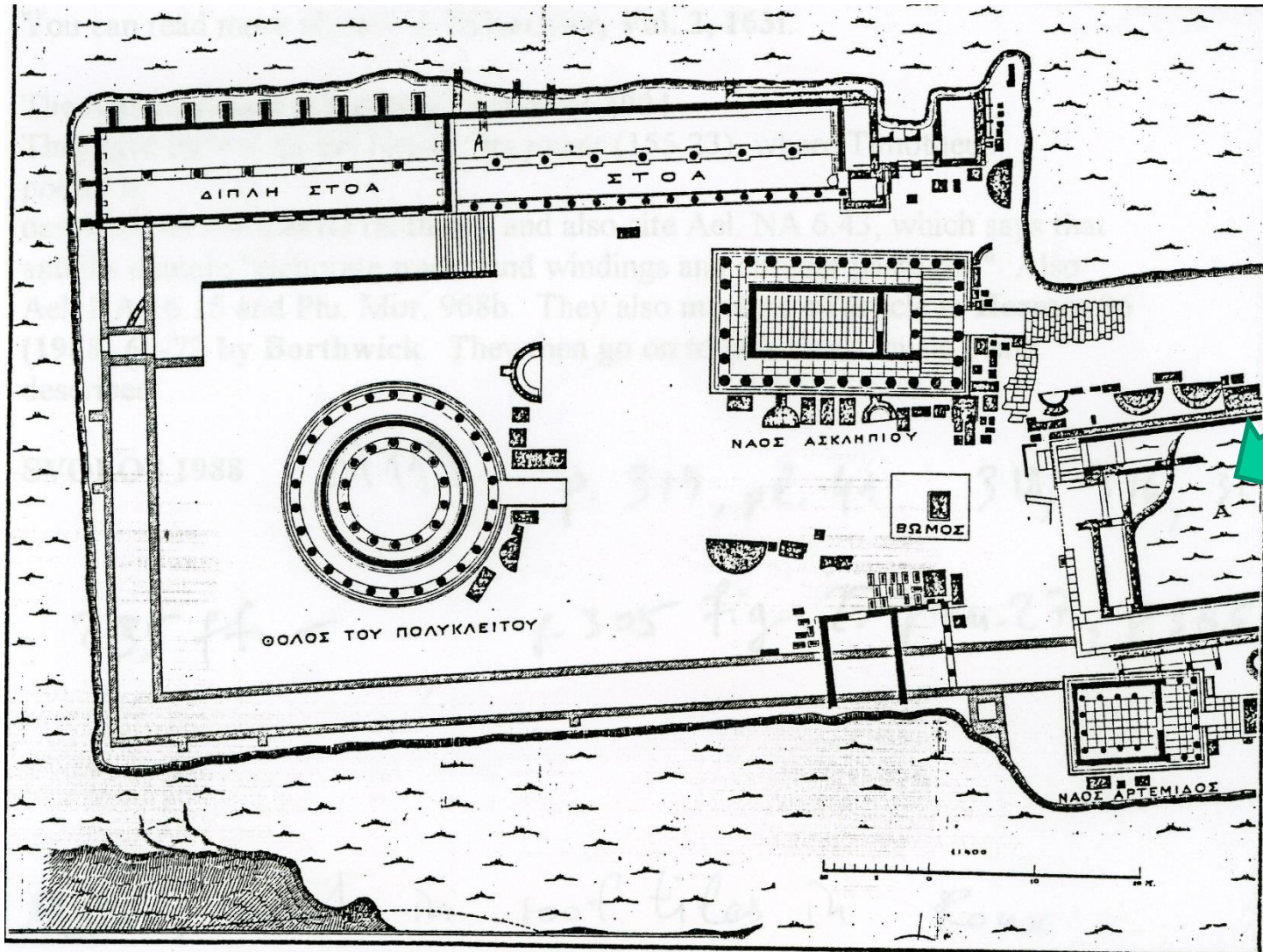


M
1268

M
1259

ME
1259



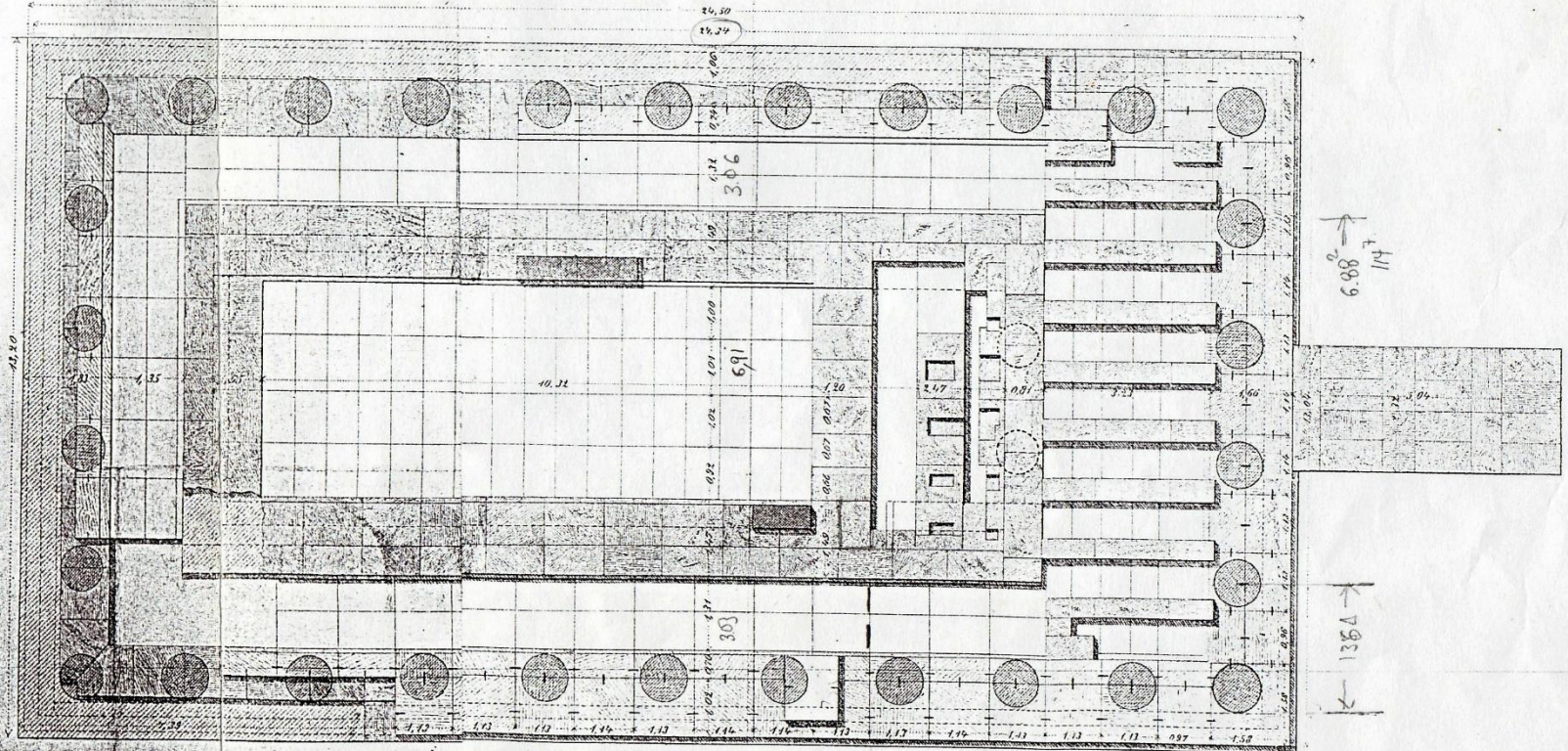


ΙΕΡΟ ΑΣΚΛΗΠΙΟΥ. ΕΠΙΔΑΥΡΟΣ

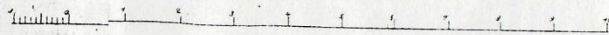


ΝΑΟΣ ΑΣΚΛΗΠΙΟΥ. ΕΠΙΔΑΥΡΟΣ

2. ΤΟΜΗ ΤΟΥ ΝΑΟΥ



1. ΚΑΤΩΡΙΣ ΤΟΥ ΝΑΟΥ

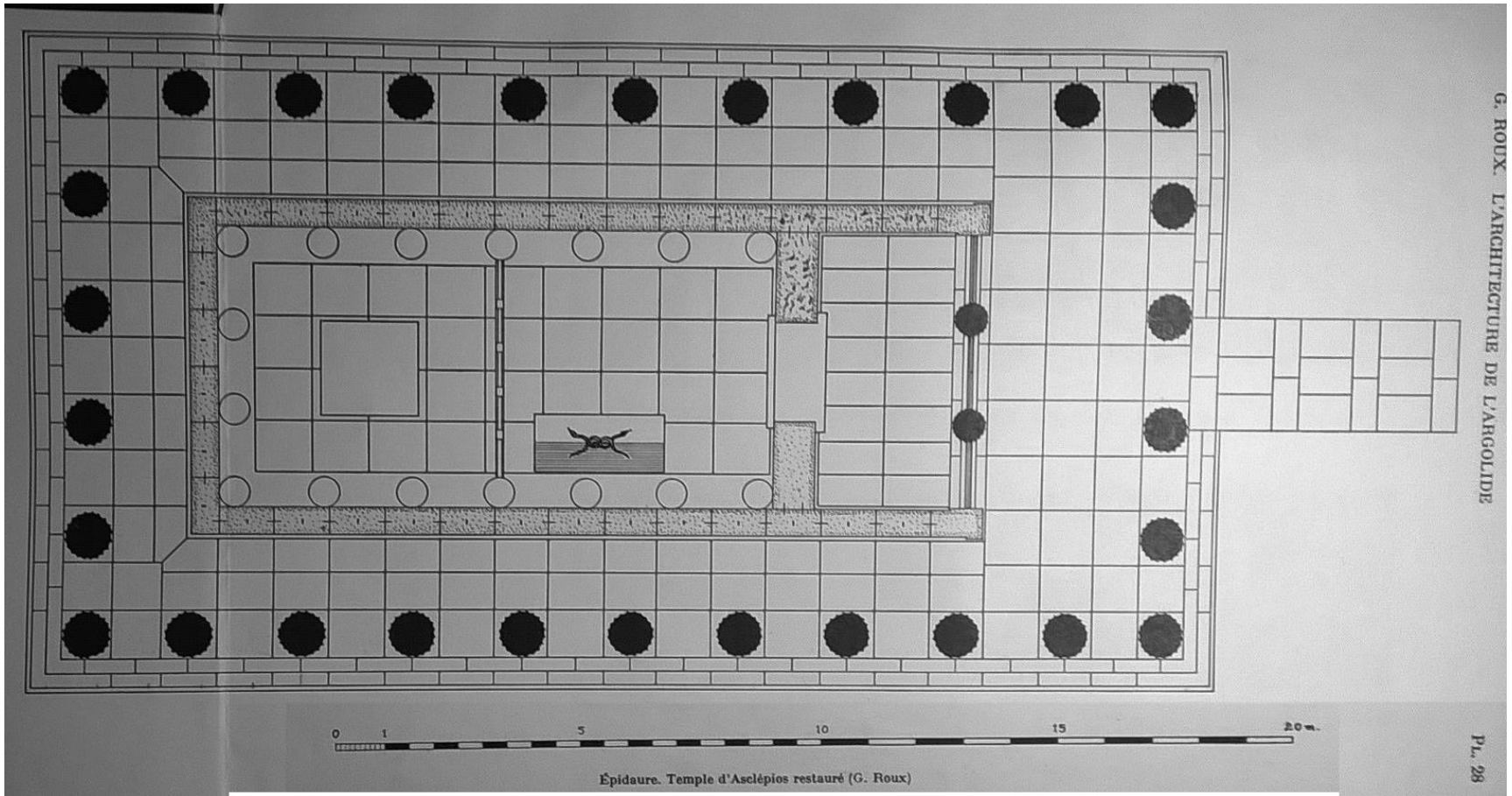


1302 4 εκ = 1045.

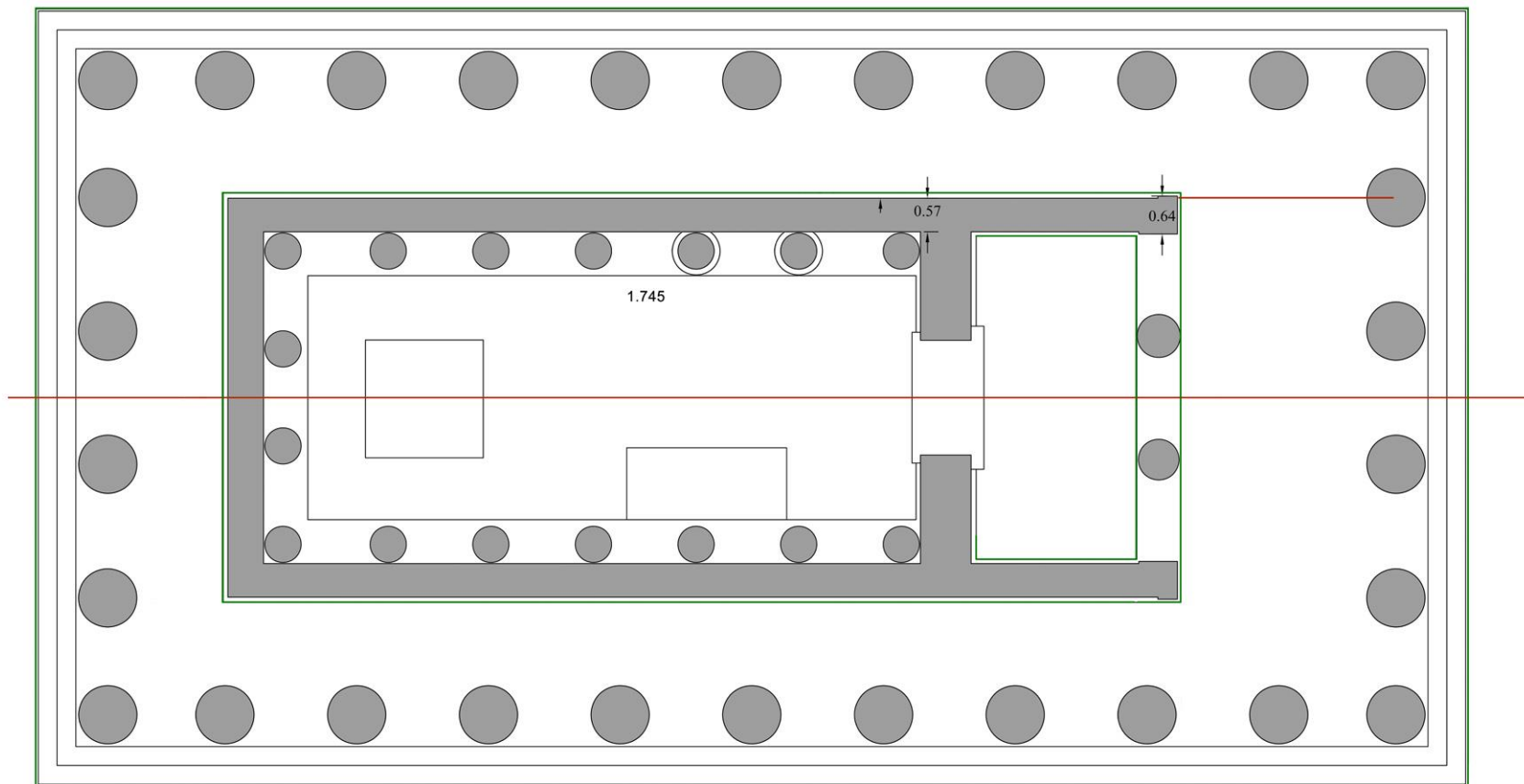
642Δ.
11.877

Α. Ν. Τριανταφυλλίδης

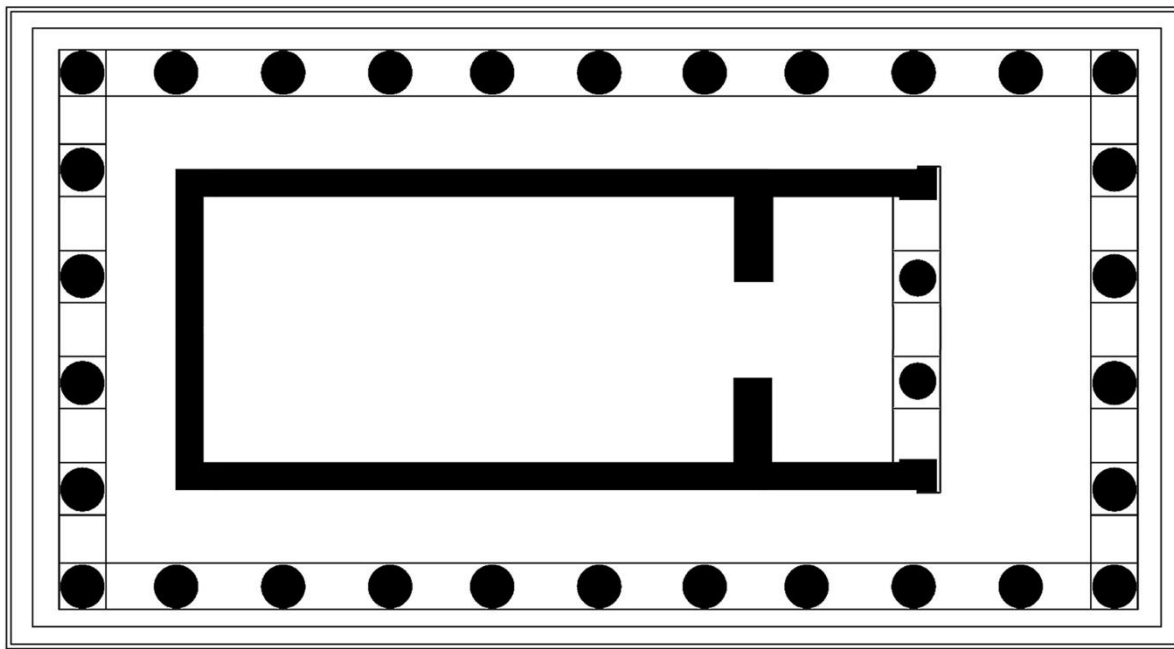
ΝΑΟΣ ΑΣΚΛΗΠΙΟΥ. ΕΠΙΔΑΥΡΟΣ



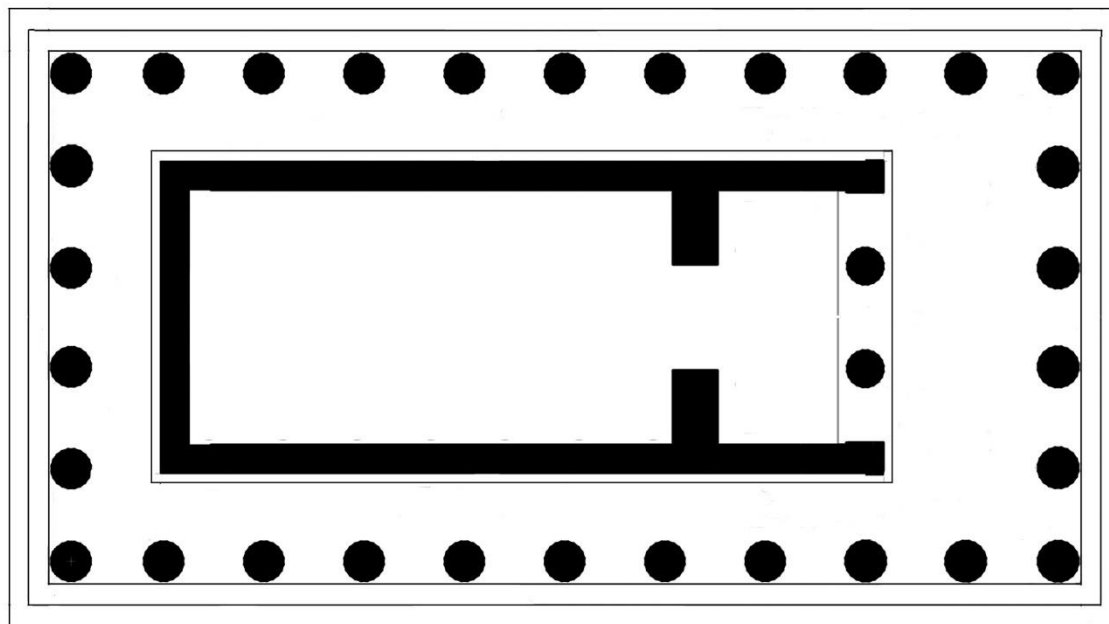
ΝΑΟΣ ΑΣΚΛΗΠΙΟΥ.
ΕΠΙΔΑΥΡΟΣ



ΝΑΟΣ ΑΣΚΛΗΠΙΟΥ.
ΕΠΙΔΑΥΡΟΣ



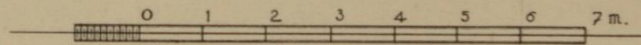
ΝΑΟΣ ΑΣΚΛΗΠΙΟΥ
ΕΠΙΔΑΥΡΟΣ

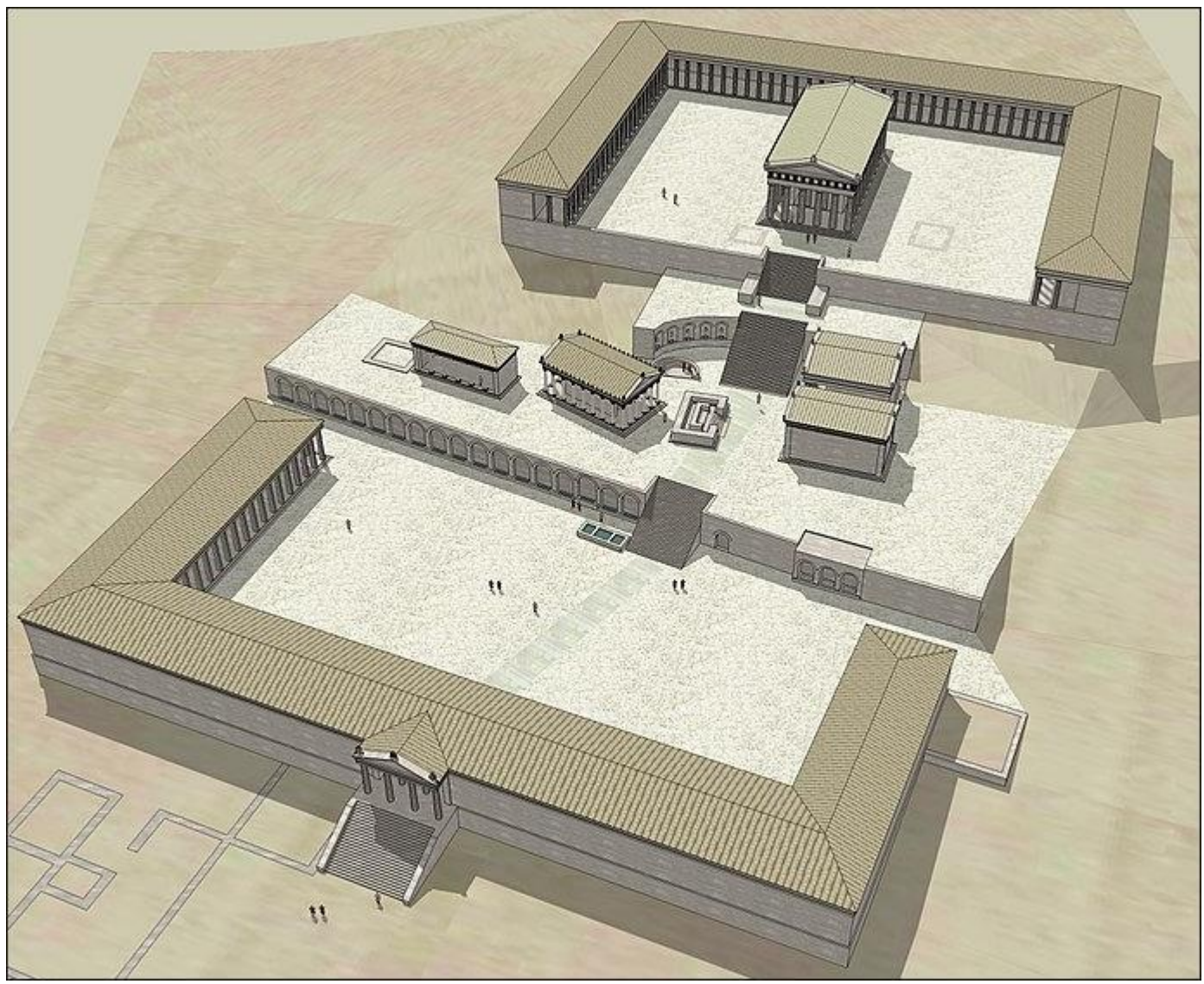


ΝΑΟΣ ΑΣΚΛΗΠΙΟΥ.
ΓΟΡΤΥΝΑ

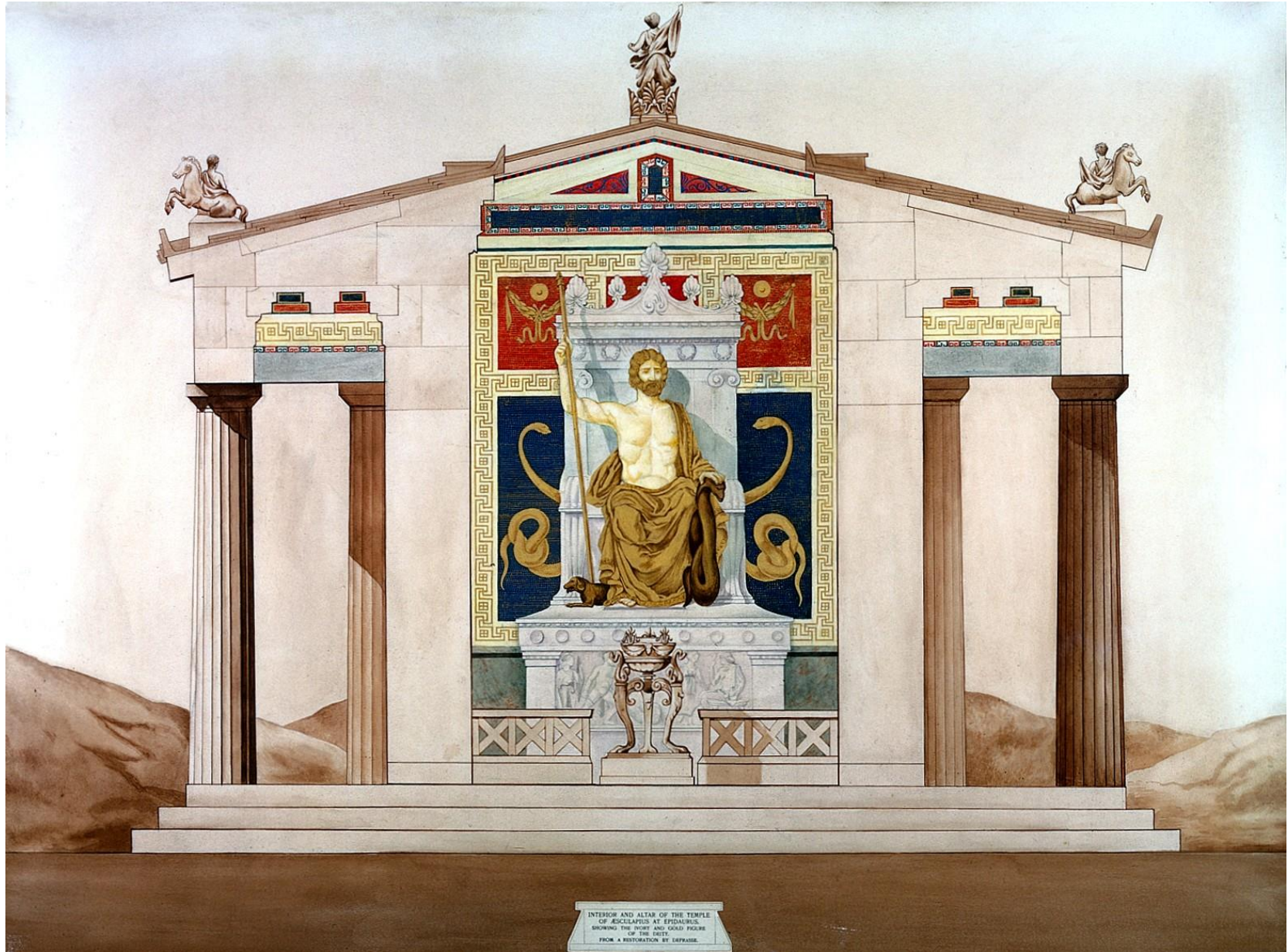
0 1 5 m.

ΝΑΟΣ ΑΣΚΛΗΠΙΟΥ.
ΚΩΣ. 150 Π.Χ.





ΝΑΟΣ ΑΣΚΛΗΠΙΟΥ. ΕΠΙΔΑΥΡΟΣ



ΝΑΟΣ ΑΣΚΛΗΠΙΟΥ. ΕΠΙΔΑΥΡΟΣ



ΝΑΟΣ ΑΣΚΛΗΠΙΟΥ. ΤΙΜΟΘΕΟΣ



Fig. 6.1 The east pediment and akroteria of the temple of Asklepios at Epidauros. Athens, Pentelic marble, ca. 380 B.C.E. Original fragments in the National Archaeological Museum, Athens. Restoration drawing: David Boggs after Yalouris 1992.

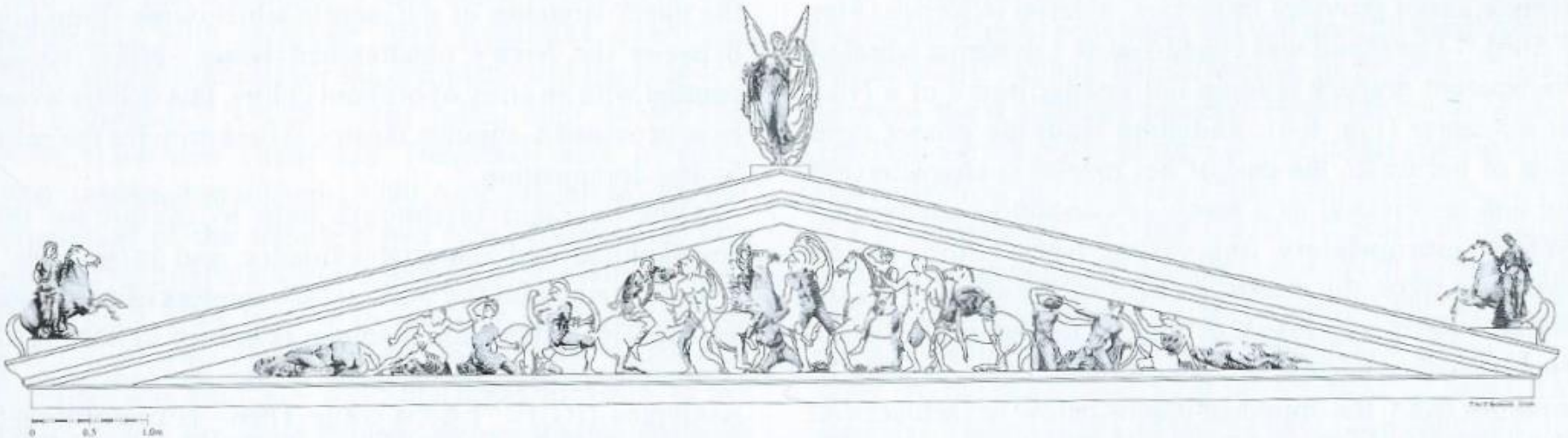
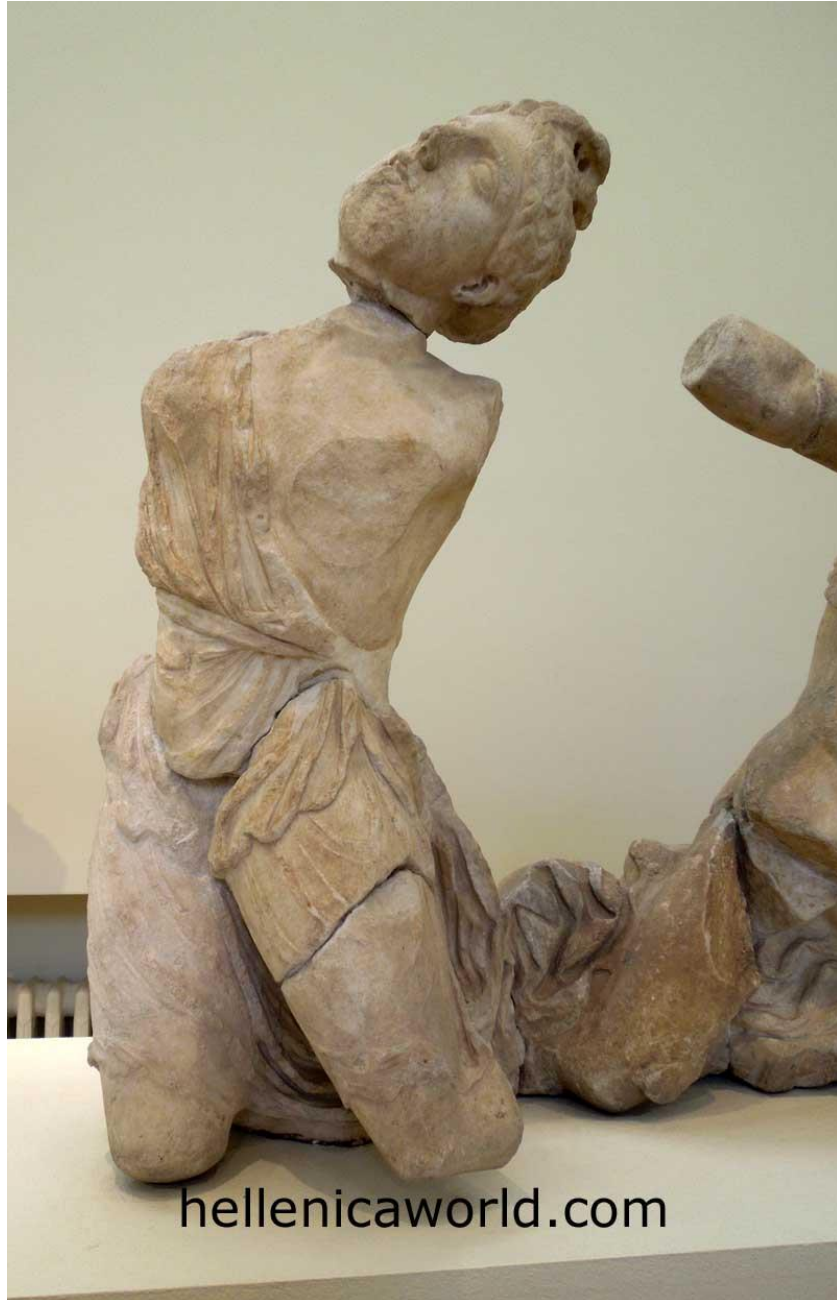


Fig. 6.2 The west pediment and akroteria of the temple of Asklepios at Epidauros. Athens, Pentelic marble, ca. 380 B.C.E. Original fragments in the National Archaeological Museum, Athens. Restoration drawing: David Boggs after Yalouris 1992.





hellenicaworld.com







